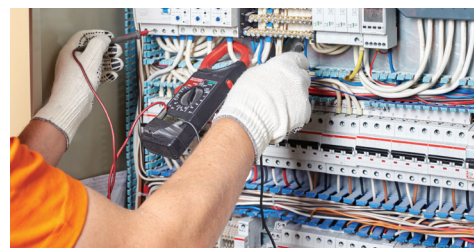


OEM^{HV}



ORIGINAL EQUIPMENT MANUFACTURERS
SOLUTIONS OVERVIEW



OEM SOLUTIONS

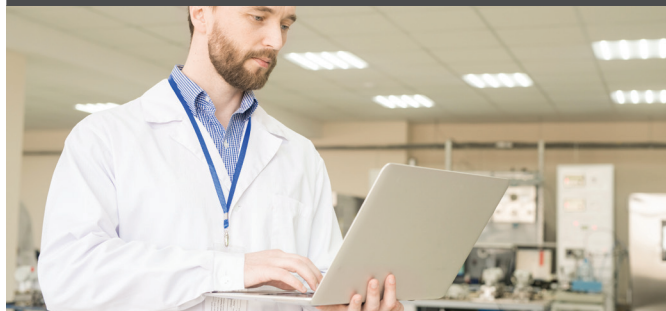


Users depend on Original Equipment Manufacturers to provide reliable, quality products. At Hubbell, our commitment to quality ensures our components enhance your brands, adding credibility and value. The result is greater than the sum of the parts. Bring Hubbell onboard!

Add Value Through Quality Components and Reliable Supply *Trust Hubbell As Your Partner*

Hubbell has pioneered manufacturing electrical components for over 130 years. Our portfolio of brands is bolstered by a legacy of and ongoing commitment to innovation, quality and unsurpassed service. Our new product development processes and global supply chain ensures the incorporation of innovation and product accessibility.

Quality



Innovation



Service



Supply Chain



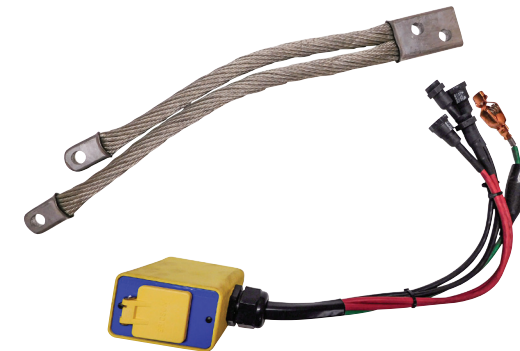
OEM MARKETPLACE

- | | |
|---|-------------------------------------|
| ⚠ Electrical Distribution Equipment | ⚠ Electrical Generation Equipment |
| ⚠ Electrical Transmission Equipment | ⚠ Motor Control Manufacturers |
| ⚠ Switchgear Manufacturers | ⚠ Regulator Manufacturers |
| ⚠ Transformer and Breaker Manufacturers | ⚠ Capacitor & Reactor Manufacturers |

Hubbell provides a comprehensive offering of product solutions that meet the complex challenges faced by original equipment manufacturers.

OUR BRANDS

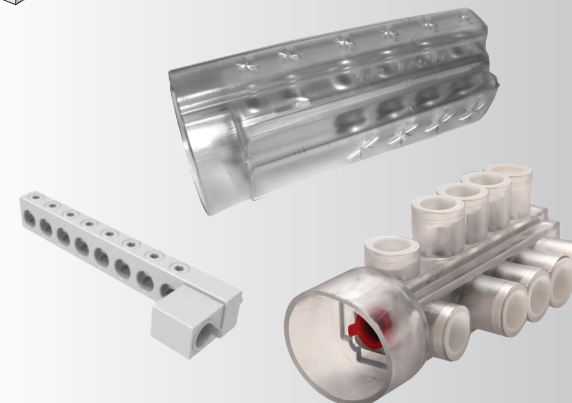
Acme Electric transforms energy into what you do, every day. Our power quality and conversion equipment for OEM, industrial and commercial markets are backed by expertise and a legacy of innovation since 1917. Our designs are trusted to match application and performance requirements. From an original line of motor-driven battery chargers and electrical generators, today we offer a diversified mix of highquality low voltage, medium voltage and 3 phase transformers and power supplies.



Electric Motion Company (EMC®) specializes in the development of bonding, grounding, and fastening solutions for use within renewable energy, communication, heavy equipment, and electric utility markets. They specialize in improving legacy designs to advance safety measures while increasing the reliability of the systems that utilize them. Founded in 1978, the driving focus of the business has been on over delivering to the customers. This focus has been amplified over the last 42 years.

Electro Composites™ is the industry leader in manufacturing high voltage solid dielectric epoxy capacitance (SDC™) graded bushings, offering solutions for applications up to 170kV. EC also offers a wide variety of insulators and custom molded parts that ensure an exact match for form, fit & function when you are replacing equipment. We are ISO 9001:2015 registered and our products are proven with over 25 years of field service in the ANSI, CSA and IEC marketplace.

Electro Composites™
solid HV bushings solution



For more than 70 years, Connector Manufacturing Company (CMC®) has been dedicated to the engineering, design, and manufacture of quality products for the utility and OEM markets. Thanks to this long history, CMC® has a solid understanding of industry challenges and offers a broad range of electrical connectors and accessories for use in connecting overhead and underground distribution transformers. All CMC distribution transformer connectors are dual-rated for aluminum or copper conductors, range taking to accept a wide range of conductor sizes, and fully tested to ANSI C119.4 for class 'A' connectors. CMC is ISO 9001:2015 registered as well as UL, and CSA certified.

The Right Fit At BURNDY, we pride ourselves on developing Solutions for the OEM Customer. In fact, we thrive on challenge. When our customers bring us a problem, we are equipped to devote significant engineering, manufacturing and testing resources to solving it. That's precisely what we've been doing for more than 85 years. BURNDY has also been working hard to maintain continued product quality while respecting our natural resources by providing products and services that are not harmful to the atmosphere or surroundings. No matter what you need- from connectors to tooling-BURNDY provides solutions for all stages of OEM product development.



Hubbell manufactures a wide range of surge arresters that protect valuable station, transmission and distribution equipment for applications around the world. Key products include distribution class arresters, under oil arresters, station class arresters and MOV blocks. OEMs have been a vital part of Hubbell's evolution since it began manufacturing surge arresters in 1950. Hubbell is at the forefront of MOV design and is one of the only MOV block manufacturers in the United States. Hubbell arrester designs use a proprietary ESP™ polymer which has over 40 years of field experience. Hubbell has built its market share and reputation on quality, customer service and dependability.

OUR BRANDS

Hubbell Industrial Controls Division (ICD) provides innovative, quality control products for overhead cranes, steel mills, oil and gas drilling rigs, locomotives and transit vehicles, mining vehicles, industrial fire pumps and alternative energy conversion systems. Since 1916, our trailblazing history has made us the backbone of the DC and AC controls market in North America and around the globe. Our world-class manufacturing and superior service make Hubbell ICD a catalyst in the crane market and beyond.



PCORE® is North America's only company 100% focused on the manufacturing of capacitance-graded bushings and related components for transformers and oil circuit breakers in the ANSI and CSA marketplace. PCORE's product line includes POC®, PRC® and Quick-Link™ bushings, SET Terminals, Bushing Repair Services and the Reuel brand of cycloaliphatic epoxy molded insulators, apparatus bushings and specialty products for medium voltage electrical equipment. PCORE is an ISO 9001:2015 certified supplier that continues to support all bushing products and deliver the outstanding level of service our customers have come to expect. That's The Power To Serve.

Hubbell Wiring Device-Kellems is the premier manufacturer of wiring devices that put safety, installation ease, energy efficiency, productivity, reliability, and quality at the forefront. Their product portfolio includes receptacles and switches, plugs and connectors, Kellems grips and cord connectors, floor boxes, and poke-throughs. They offer solutions that ensure instant access to power, data, and voice and multimedia for industrial, commercial, healthcare, education, food processing, and residential environments. With a forward-thinking approach, they listen to installers and end-users and then design devices that solve their biggest challenges.



Powerohm is a world-class, customer-driven manufacturer of power resistor products, committed to providing the highest value, highest quality product at attractive prices. Powerohm offers one of the broadest lines of resistor solutions, with features such as optional all stainless-steel construction including hardware and in-house ceramic manufacturing, setting them apart from the competition. Their diverse selection, competitive pricing, and excellent sales and service ensures that Powerohm brings the highest value possible for today's demanding industries.

The Meramec Instrument Transformer Co. is the Instrument Transformer Specialist. Meramec excels in building the highest quality, custom-made instrument transformers while providing the shortest turnaround time in the industry. It specializes in a broad range of instrument transformers for a variety of applications including generators, power transformers, MV & HV circuit breakers, MV & LV switchgear and aftermarket uses. Founded in 1969, Meramec is ISO 9001:2015 registered and is located in the USA. From its manufacturing facility in Missouri, Meramec serves both the domestic and the international electric power markets.



Wiegmann specializes in quality electrical enclosures built from materials including stainless or carbon steel and aluminum. Our designs fit an array of specialized applications and NEMA ratings. Support for OEMs includes modified and custom enclosures with punching, tapping, studs, size, channel iron, weather hoods, special materials and unique colors. Our tradition of quality is apparent in products which provide superior performance and dependable service.

BRAND SOLUTIONS



Trust the name behind reliable, recognized brands

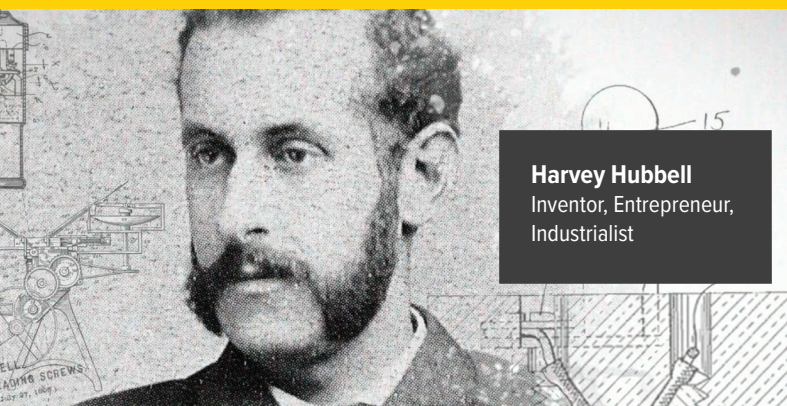
Hubbell's vast portfolio of brands addresses the multifaceted demands you face when consolidating suppliers. Our investment in technology drives efficiency and eliminates waste. Leverage our deep resource and product offerings, backed by first class service, to enhance value and increase speed to market.

Product Categories



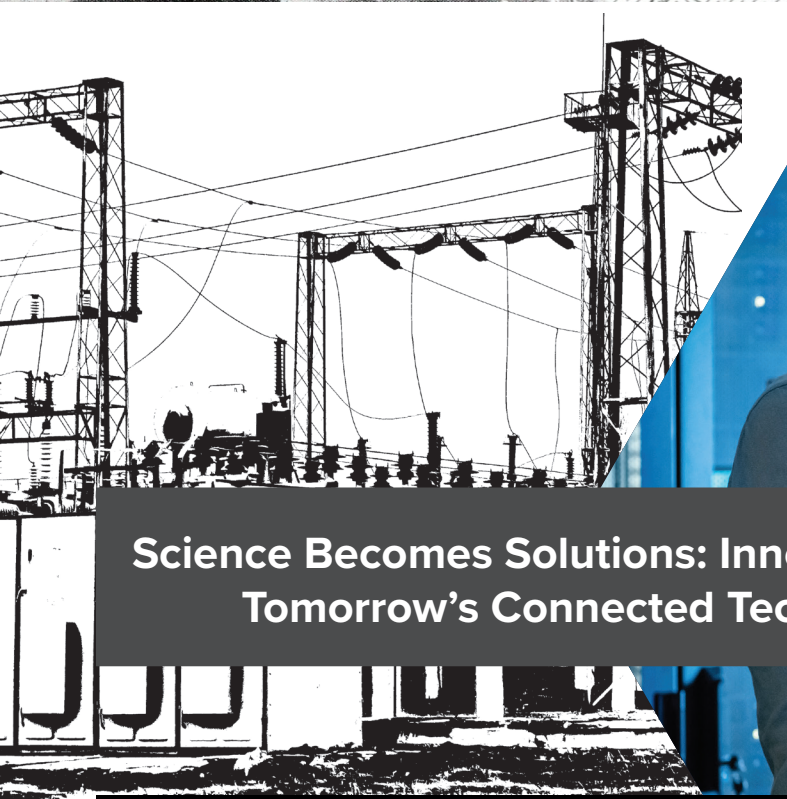
Arresters												
Autotransformers												
Braid Assemblies												
Braking Resistors/Braking Modules												
Bushings												
Collars, Neutral Bars												
Compression Connectors, Tooling, Wire Mgmt.												
Definite Purpose DC Contactors												
Enclosures, Wireway												
Insulators												
Mechanical Connectors												
Motor Disconnects												
Pin & Sleeve Devices												
Pushbutton Pendants												
Reactors/Inductors												
Specialty Coils												
Transformers: Control, Dry-Type												
Transformers: Instrument - Current & Voltage												
Wiring Devices												

RELIABLE & TIME TESTED



Harvey Hubbell
Inventor, Entrepreneur,
Industrialist

Founded in 1888, Hubbell Incorporated is a global manufacturer of quality electrical and electronic products for a broad range of applications in the Electrical and Power Segments.



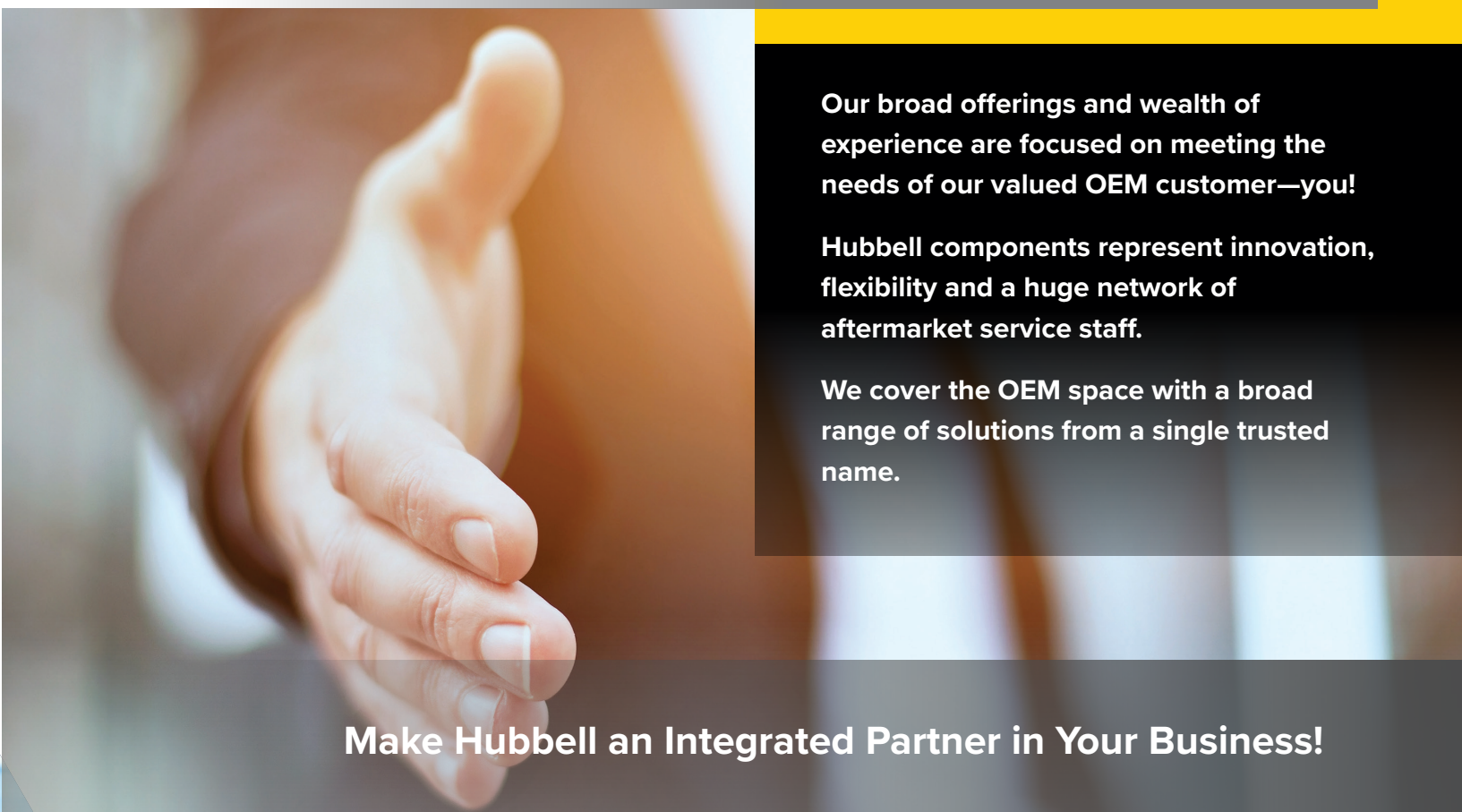
Science Becomes Solutions: Innovating From Electromechanical to Tomorrow's Connected Technology



Our manufacturing roots run from the industrial revolution in the United States through the global technological revolution bridging the 2000's. The Hubbell legacy of innovation and new product development leverages technology, incorporating it in our products and production processes.

130+ Years Serving our Customers	18,800 Employees Across the Globe	2,400 Patents	9 Global Operations in 9 Countries	50 Manufacturing Locations
---	--	-------------------------	---	---

ONE HUBBELL ADVANTAGE



Our broad offerings and wealth of experience are focused on meeting the needs of our valued OEM customer—you!

Hubbell components represent innovation, flexibility and a huge network of aftermarket service staff.

We cover the OEM space with a broad range of solutions from a single trusted name.

Make Hubbell an Integrated Partner in Your Business!

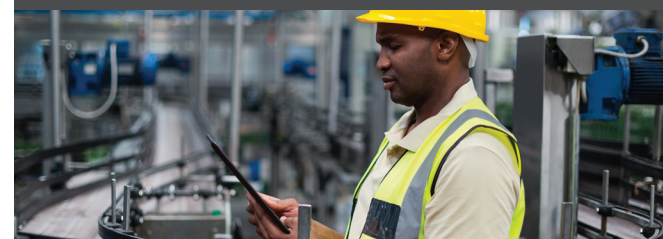
Product Design Engineers



Global Procurement Specialists

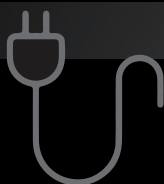


Production and Quality Engineers



Management Team





COMMERCIAL AND INDUSTRIAL PRODUCT CATEGORIES

- WIRING DEVICES & ACCESSORIES
- PLUGS & RECEPTACLES
- SWITCHES & DIMMERS
- DATACOM CONNECTIVITY & ENCLOSURES
- PIN & SLEEVE DEVICES
- JUNCTION BOXES
- CABLE REELS
- STEEL & PLASTIC ENCLOSURES
- GROUND FAULT DEVICES
- ELECTRICAL MOTOR CONTROLS



LIGHTING AND CONTROLS PRODUCT CATEGORIES

- CANOPY LIGHTS
- PARKING LOT/PARKING GARAGE FIXTURES
- EMERGENCY LIGHTING/EXIT SIGNS
- BATH/VANITY FIXTURES & CEILING FANS
- ARCHITECTURAL LIGHTING & SCONCES
- OCCUPANCY, DIMMING & DAYLIGHT HARVESTING SENSORS
- DECORATIVE LANDSCAPE FIXTURES
- BOLLARDS
- FLOODLIGHTS & POLES
- SITE & AREA LIGHTING
- RECESSED, SURFACE MOUNTED & TRACK FIXTURES



CONSTRUCTION AND ENERGY PRODUCT CATEGORIES

- MECHANICAL CONNECTORS GAS CONNECTORS AND ASSEMBLIES
- MECHANICAL GROUNDING DEVICES
- MINING COMMUNICATION & CONTROLS
- SPECIALTY LIGHTING
- SAFETY EQUIPMENT
- SPECIALTY COMMUNICATIONS EQUIPMENT
- INSTALLATION TOOLING
- COMPRESSION CONNECTORS
- CABLE GLANDS & FITTINGS



POWER SYSTEMS PRODUCT CATEGORIES

- ARRESTERS
- GROUNDING & BONDING EQUIPMENT
- INSULATORS
- POLE LINE HARDWARE
- SECTIONALIZERS
- FORMED WIRE PRODUCTS
- OVERHEAD, PAD MOUNTED & CAPACITOR SWITCHES
- METER INSTALLATION SERVICES
- ADVANCED METERING INFRASTRUCTURE
- METERS AND EDGE DEVICES
- BUSHINGS
- CUTOUPS & FUSE LINKS
- PROGRAMMABLE RECLOSERS
- CABLE TERMINATIONS & ACCESSORIES
- HELICAL ANCHORS & FOUNDATIONS
- LINEMAN TOOLS, HOSES & GLOVES
- SPLICES, TAPS & CONNECTORS
- POLYMER CONCRETE & FIBERGLASS ENCLOSURES AND EQUIPMENT PADS
- CURRENT TRANSFORMERS



Hubbell Incorporated
40 Waterview Drive
Shelton, Connecticut 06484
www.hubbell.com