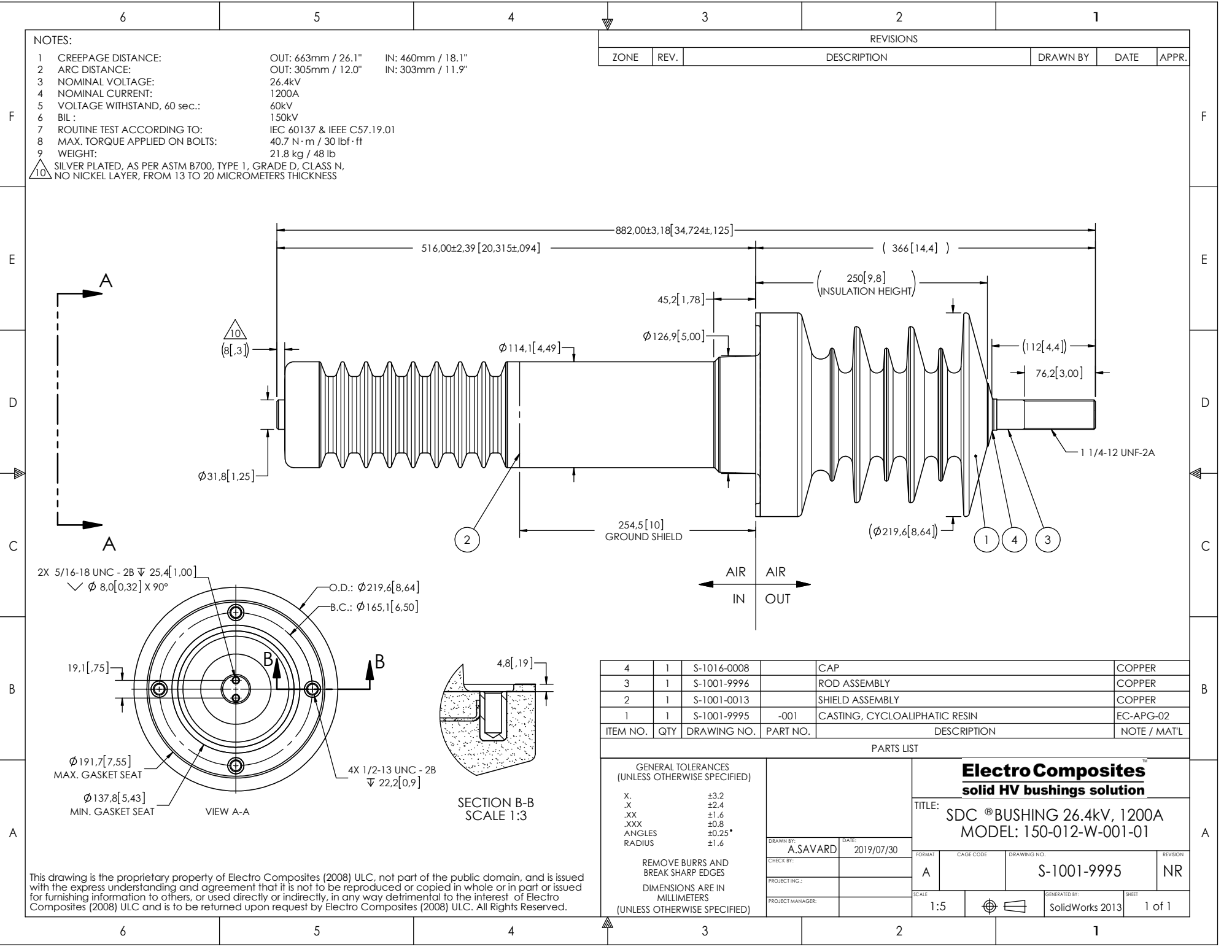


- NOTES:
- |   |                               |                            |                   |
|---|-------------------------------|----------------------------|-------------------|
| 1 | CREEPAGE DISTANCE:            | OUT: 663mm / 26.1"         | IN: 460mm / 18.1" |
| 2 | ARC DISTANCE:                 | OUT: 305mm / 12.0"         | IN: 303mm / 11.9" |
| 3 | NOMINAL VOLTAGE:              | 26.4kV                     |                   |
| 4 | NOMINAL CURRENT:              | 1200A                      |                   |
| 5 | VOLTAGE WITHSTAND, 60 sec.:   | 60kV                       |                   |
| 6 | BIL :                         | 150kV                      |                   |
| 7 | ROUTINE TEST ACCORDING TO:    | IEC 60137 & IEEE C57.19.01 |                   |
| 8 | MAX. TORQUE APPLIED ON BOLTS: | 40.7 N·m / 30 lbf·ft       |                   |
| 9 | WEIGHT:                       | 21.8 kg / 48 lb            |                   |
10. SILVER PLATED, AS PER ASTM B700, TYPE 1, GRADE D, CLASS N, NO NICKEL LAYER, FROM 13 TO 20 MICROMETERS THICKNESS

REVISIONS					
ZONE	REV.	DESCRIPTION	DRAWN BY	DATE	APPR.



ITEM NO.	QTY	DRAWING NO.	PART NO.	DESCRIPTION	NOTE / MAT'L
4	1	S-1016-0008		CAP	COPPER
3	1	S-1001-9996		ROD ASSEMBLY	COPPER
2	1	S-1001-0013		SHIELD ASSEMBLY	COPPER
1	1	S-1001-9995	-001	CASTING, CYCLOALIPHATIC RESIN	EC-APG-02

PARTS LIST					
GENERAL TOLERANCES (UNLESS OTHERWISE SPECIFIED)			<b>Electro Composites™</b> <b>solid HV bushings solution</b>		
X.	±3.2	<b>TITLE:</b> SDC ® BUSHING 26.4kV, 1200A MODEL: 150-012-W-001-01			
.X	±2.4				
.XX	±1.6				
.XXX	±0.8				
ANGLES	±0.25°				
RADIUS	±1.6	<b>DRAWN BY:</b> A.SAVARD <b>DATE:</b> 2019/07/30			
REMOVE BURRS AND BREAK SHARP EDGES			<b>FORMAT:</b> A <b>CAGE CODE:</b> <b>DRAWING NO.:</b> S-1001-9995 <b>REVISION:</b> NR		
DIMENSIONS ARE IN MILLIMETERS (UNLESS OTHERWISE SPECIFIED)			<b>SCALE:</b> 1:5 <b>GENERATED BY:</b> SolidWorks 2013 <b>SHEET:</b> 1 of 1		

This drawing is the proprietary property of Electro Composites (2008) ULC, not part of the public domain, and is issued with the express understanding and agreement that it is not to be reproduced or copied in whole or in part or issued for furnishing information to others, or used directly or indirectly, in any way detrimental to the interest of Electro Composites (2008) ULC and is to be returned upon request by Electro Composites (2008) ULC. All Rights Reserved.