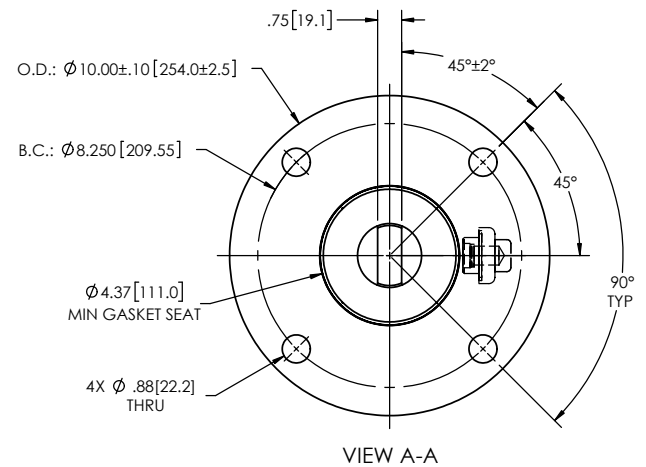
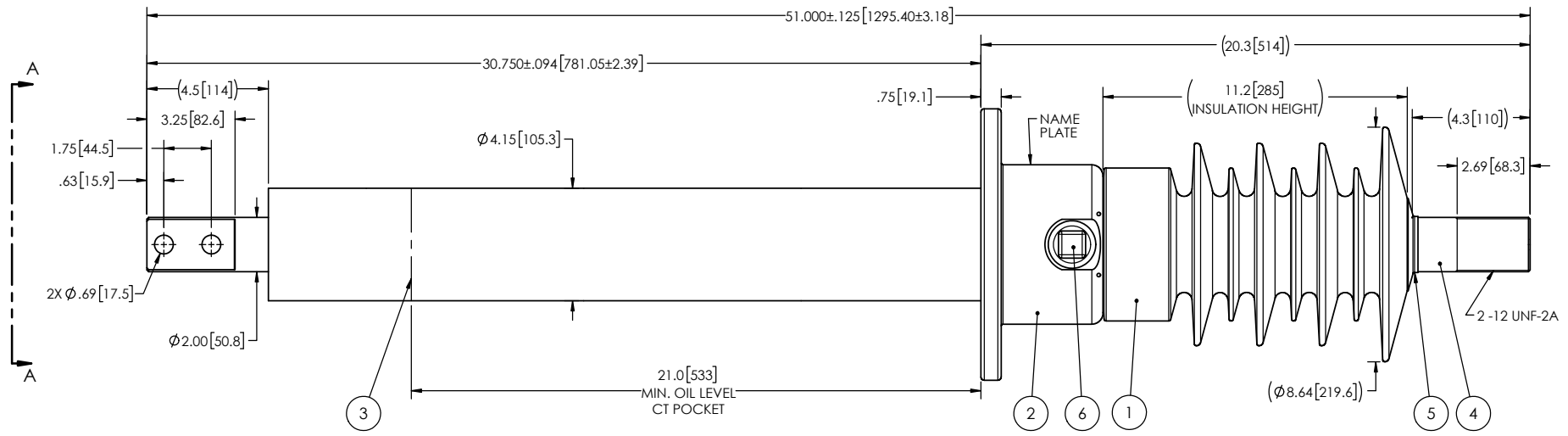


- NOTES:
- 1 CREEPAGE DISTANCE: 30.3" / 771 mm
 - 2 ARC DISTANCE: 13.4" / 340mm
 - 3 NOMINAL VOLTAGE: 25kV
 - 4 NOMINAL CURRENT: 2000A
 - 5 VOLTAGE WITHSTAND, 60 sec.: 60kV
 - 6 BIL : 150kV
 - 7 ROUTINE TEST ACCORDING TO: IEEE C57.19.01
 - 8 MAX. TORQUE APPLIED ON FLANGE BOLTS: 40 lbf·ft / 54.2 N·m
 - 9 WEIGHT: 94 lb / 42.6 kg
 - 10 INSULATION THERMAL LIMIT: 130°C. BUSHING RATED PER IEEE C57.19.00 USUAL SERVICE CONDITIONS. Ⓟ

REVISIONS					
ZONE	REV.	DESCRIPTION	DRAWN BY	DATE	APPR.
C5 C6	A	ADD THE ANGLE BETWEEN THE BOTTOM SPADE AND A HOLE OF THE FLANGE. INCREASE THE TOLERANCES ON THE FLANGE OUTSIDE DIAMETER.	J. CLICHE	2017-02-02	Y.V.
F4	B	UPDATE NOTE # 10 ABOUT INSULATION THERMAL LIMIT	M. FORGET	2021-12-08	Y.V.



ITEM NO.	QTY	DRAWING NO.	PART NO.	DESCRIPTION	NOTE / MAT'L
6	1	S-1001-2022		CAPACITANCE TAP ASSEMBLY	ALUMINUM
5	1	S-1344-0162-0		CAP	COPPER
4	1	S-7435-8291		ROD ASSEMBLY	COPPER
3	1	S-7435-8290		SHIELD ASSEMBLY	COPPER
2	1	S-2010-8265		FLANGE	ALUMINUM
1	1	S-7435-8289	-001	CASTING, CYCLOALIPHATIC RESIN	EC-APG-15NA

PARTS LIST					
GENERAL TOLERANCES (UNLESS OTHERWISE SPECIFIED)			Electro Composites™ solid HV bushings solution		
X.	±0.125	TITLE: SDC® BUSHING , 25kV, 2000A MODEL: 150-020-T-066-03			
.X	±0.094		DRAWN BY: J.N.PILOTTE DATE: 2014/03/25		
.XX	±0.063	REMOVED:			
.XXX	±0.031	PROJECT ENG.:			
ANGLES	±0.25°	PROJECT MGR.:			
RADIUS	±0.031	SCALE: 1:6			
REMOVE BURRS AND BREAK SHARP EDGES DIMENSIONS ARE IN INCHES (UNLESS OTHERWISE SPECIFIED)			GENERATED BY: SolidWorks 2021		
FORMAT: A CAGE CODE: DRAWING NO.: S-7435-8289 REVISION: B			SHEET: 1 of 1		

This drawing is the proprietary property of Electro Composites (2008) ULC, not part of the public domain, and is issued with the express understanding and agreement that it is not to be reproduced or copied in whole or in part or issued for furnishing information to others, or used directly or indirectly, in any way detrimental to the interest of Electro Composites (2008) ULC and is to be returned upon request by Electro Composites (2008) ULC. All Rights Reserved.