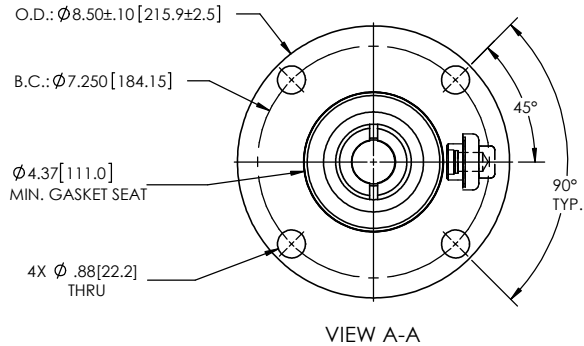
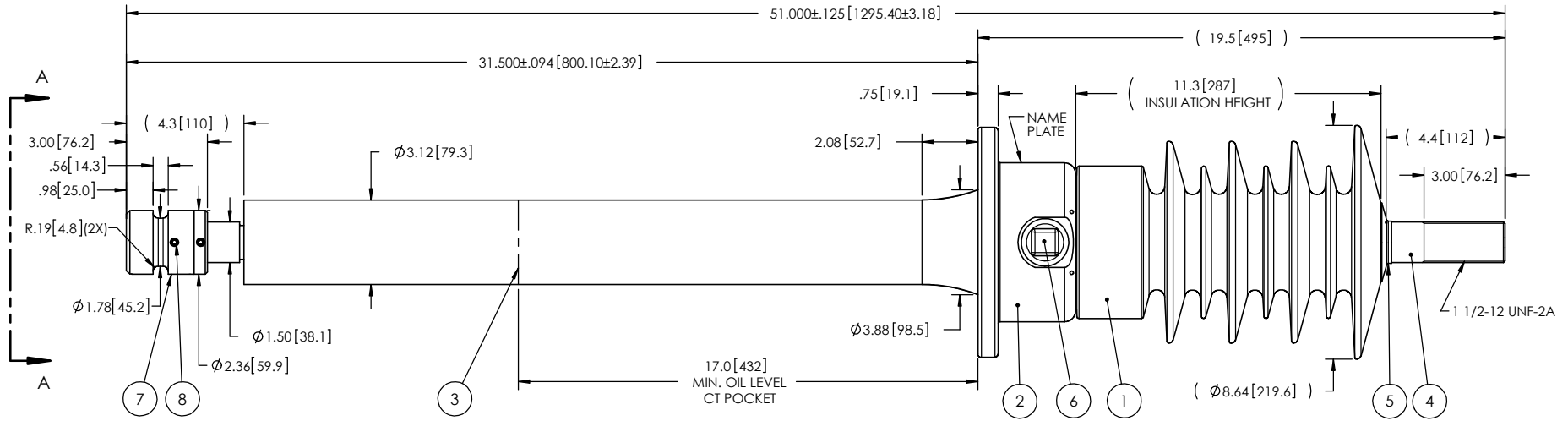


NOTES:

- 1 CREEPAGE DISTANCE: 30.6" / 778mm
- 2 ARC DISTANCE: 13.7" / 349mm
- 3 NOMINAL VOLTAGE: 35kV
- 4 NOMINAL CURRENT: 1200A
- 5 VOLTAGE WITHSTAND, 60 sec.: 95kV
- 6 BIL : 200kV
- 7 ROUTINE TEST ACCORDING TO: CSA-C88.1-96
- 8 MAX. TORQUE APPLIED ON FLANGE BOLTS: 40 lbf·ft / 54.2 N·m
- 9 WEIGHT: 61 lb / 27.7 kg

REVISIONS

ZONE	REV.	DESCRIPTION	DRAWN BY	DATE	APPR.
------	------	-------------	----------	------	-------



ITEM NO.	QTY	DRAWING NO.	PART NO.	DESCRIPTION	NOTE / MAT'L
8	2		S-1001-2465-229	CP SET SCREW, 5/16 -18 X 3/8"	S-STEEL
7	1	S-6640-10068		CONNECTOR	COPPER
6	1	S-1001-2022		CAPACITANCE TAP ASSEMBLY	ALUMINUM
5	1	S-1001-0007		CAP	COPPER
4	1	S-7124-6715		ROD ASSEMBLY	COPPER
3	1	S-7124-6714		SHIELD ASSEMBLY	COPPER
2	1	S-5755-5457		FLANGE	ALUMINUM
1	1	S-6640-10065		CASTING, CYCLOALIPHATIC RESIN	EC-APG-02

PARTS LIST

GENERAL TOLERANCES (UNLESS OTHERWISE SPECIFIED)

X.	±0.125
.X	±0.094
.XX	±0.063
.XXX	±0.031
ANGLES	±0.25°
RADIUS	±0.031

REMOVE BURRS AND BREAK SHARP EDGES

DIMENSIONS ARE IN INCHES (UNLESS OTHERWISE SPECIFIED)

Electro Composites
solid HV bushings solution

TITLE:
SDC® BUSHING 35kV, 1200A
MODEL: 200-012-B-066-06

DRAWN BY: M. FORGET DATE: 2019/11/13

CHECK BY:

PROJECTING:

PROJECT MANAGER:

FORMAT	CAGE CODE	DRAWING NO.	REVISION
A		S-6640-10065	NR

SCALE	GENERATED BY	SHEET
1:6	SolidWorks 2013	1 of 1

This drawing is the proprietary property of Electro Composites (2008) ULC, not part of the public domain, and is issued with the express understanding and agreement that it is not to be reproduced or copied in whole or in part or issued for furnishing information to others, or used directly or indirectly, in any way detrimental to the interest of Electro Composites (2008) ULC and is to be returned upon request by Electro Composites (2008) ULC. All Rights Reserved.