

6

5

4

3

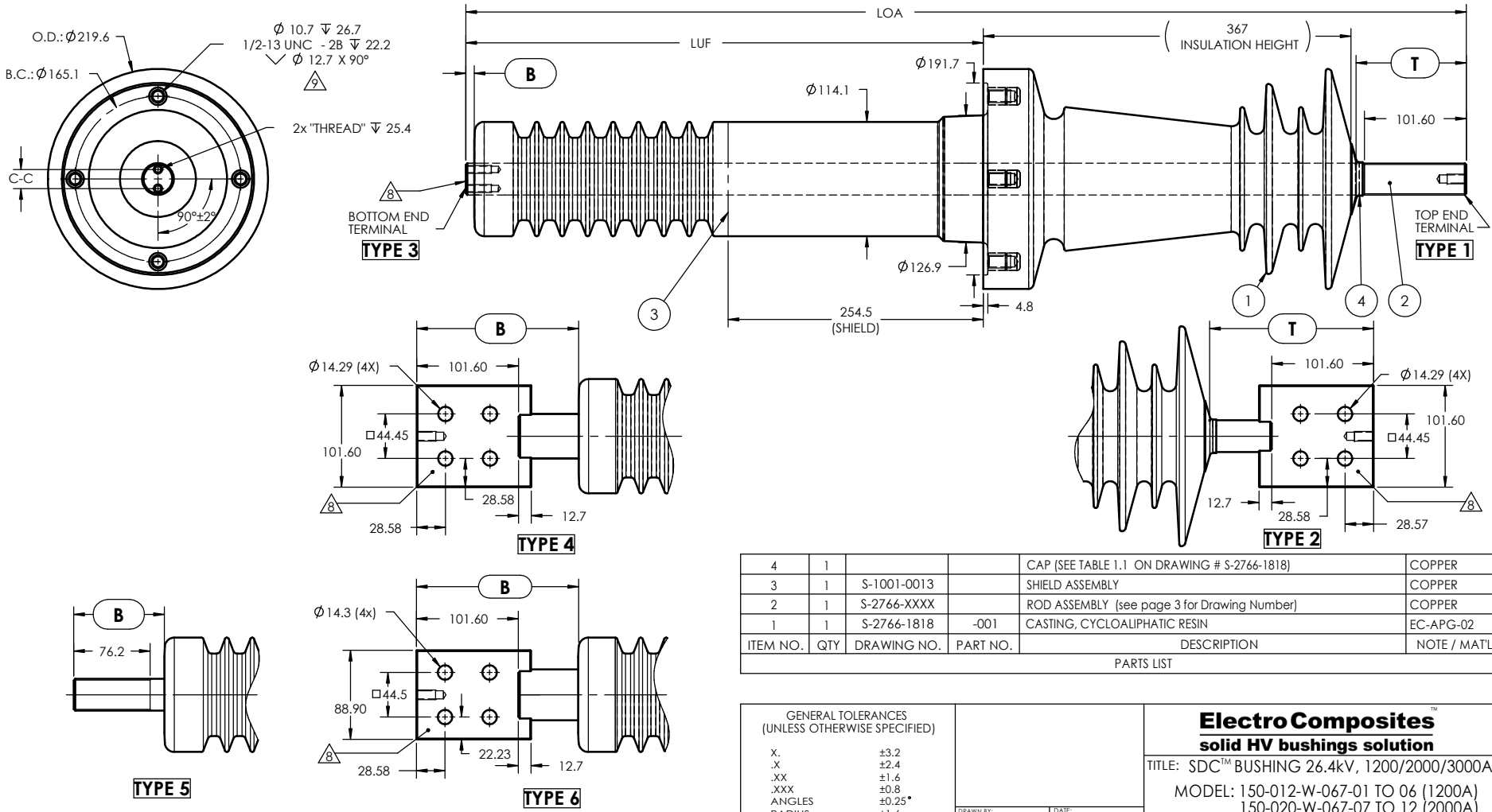
2

1

NOTES:

- 1 CREEPAGE DISTANCE: OUT: 676mm IN: 704mm
- 2 ARC DISTANCE: OUT: 423mm IN: 544mm
- 3 NOMINAL VOLTAGE: 26.4kV
- 4 NOMINAL CURRENT: 1200/2000/3000 A
- 5 VOLTAGE WITHSTAND, 60 sec.: 60kV
- 6 BIL: 150kV
- 7 ROUTINE TEST ACCORDING TO: IEC 60137, IEEE C57.19.01
- 8 SILVER PLATED, AS PER ASTM B700, TYPE 1, GRADE D, CLASS N, NO NICKEL LAYER, FROM 13 TO 20 MICROMETERS THICKNESS
- 9 MAX. TORQUE APPLIED ON FLANGE BOLTS 1/2": 40.7 N·m / 30 lbf·ft
- 10 WEIGHT (APPROX.): BETWEEN 24.9 & 38.6 Kg / 55 & 85 lb
- 11 SEE DRAWING S-2766-1943 TO KNOW WHICH CAP IS ALREADY ASSEMBLED TO THE ROD.

ZONE		REV.	DESCRIPTION	DRAWN BY	DATE	APPR.
p.1, D5	A		NOTE 8 ADDED FOR BOTTOM TERMINAL TYPE 3 ONLY	P.ST-AUBIN	2003-11-28	J.V.
p.1, C1, C6	B		HOLE DIAMETER & LEADERS #8 ADDED ON SPADES	P.ST-AUBIN	2005-03-15	J.V.
p.1, E1	C		TOP THREAD CHANGE FROM 76.2 TO 101.6	I. LEVEILLÉ	2006-09-06	J.V.
p.1, E5, D2, F5	D		CHANGE OF GEOMETRY & CREEPAGE DISTANCE	J. CLICHE	2009-05-19	Y.V.
p.3, E6	E		REPLACE THE SHORT MODEL NUMBER BY THE LONG ONE	J. CLICHE	2012-09-25	J.C.
p.3, E6	F		ADD A DIGIT ON THE 9 FIRST MODEL NUMBER	J. CLICHE	2012-09-26	J.C.
p.1, F5	H		THE NAME OF THE STANDARD CHANGE FROM "ANSI" TO "IEEE C57.19.01"	J. CLICHE	2016-03-03	J.V.



ITEM NO.	QTY	DRAWING NO.	PART NO.	DESCRIPTION	NOTE / MATL
4	1			CAP (SEE TABLE 1.1 ON DRAWING # S-2766-1818)	COPPER
3	1	S-1001-0013		SHIELD ASSEMBLY	COPPER
2	1	S-2766-XXXX		ROD ASSEMBLY (see page 3 for Drawing Number)	COPPER
1	1	S-2766-1818	-001	CASTING, CYCLOALIPHATIC RESIN	EC-APG-02

PARTS LIST

<p>GENERAL TOLERANCES (UNLESS OTHERWISE SPECIFIED)</p> <p>X. ±3.2 .X ±2.4 .XX ±1.6 .XXX ±0.8 ANGLES ±0.25° RADIUS ±1.6</p>		<p>Electro Composites™ solid HV bushings solution</p> <p>TITLE: SDC™ BUSHING 26.4kV, 1200/2000/3000A</p> <p>MODEL: 150-012-W-067-01 TO 06 (1200A) 150-020-W-067-07 TO 12 (2000A) 150-030-W-067-13 TO 18 (3000A)</p>	
<p>DRAWN BY: P. ST-AUBIN</p> <p>CHECK BY:</p> <p>PROJECTING:</p> <p>PROJECT MANAGER:</p>	<p>DATE: 2002/06/28</p> <p>SCALE: 1:6</p>	<p>FORMAT: A</p> <p>CAGE CODE: S-2766-1818</p> <p>DRAWING NO.:</p> <p>SCALE: 1:6</p>	<p>REVISION: H</p> <p>GENERATED BY: SolidWorks 2013</p> <p>SHEET: 1 of 3</p>

This drawing is the proprietary property of Electro Composites (2008) ULC, not part of the public domain, and is issued with the express understanding and agreement that it is not to be reproduced or copied in whole or in part or issued for furnishing information to others, or used directly or indirectly, in any way detrimental to the interest of Electro Composites (2008) ULC and is to be returned upon request by Electro Composites (2008) ULC. All Rights Reserved.

6

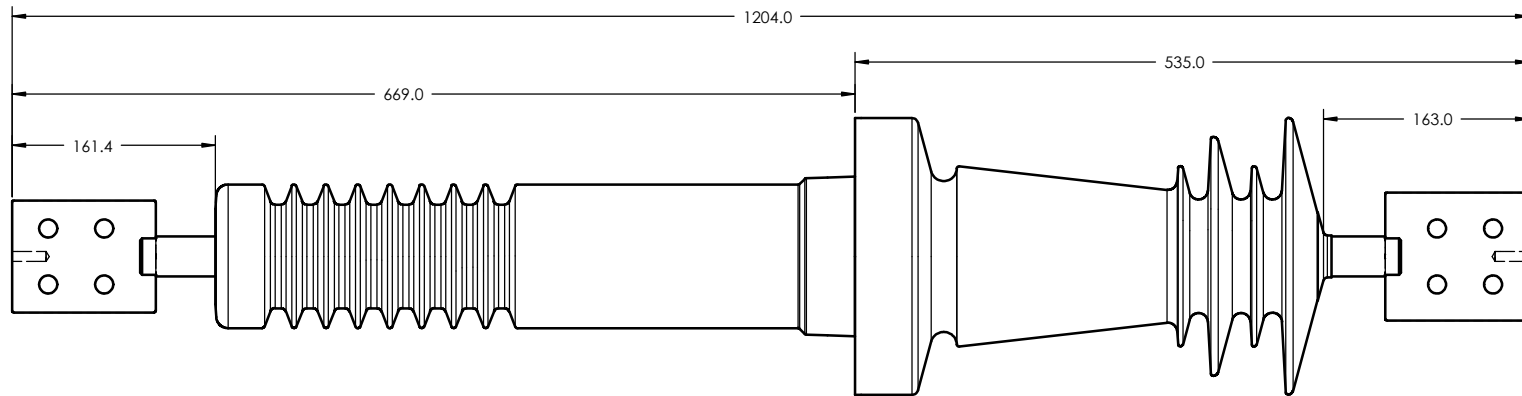
5

4

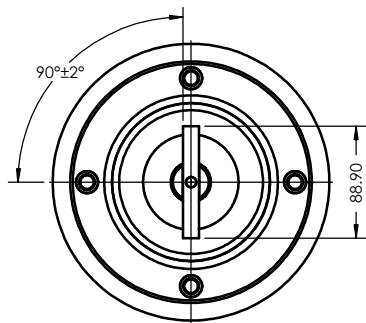
3

2

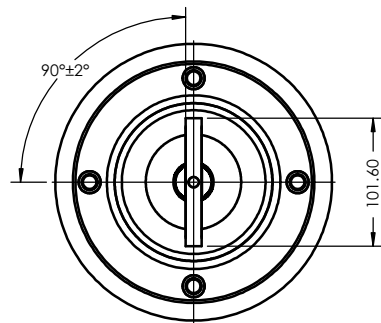
1



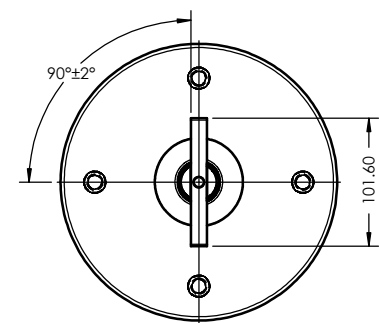
(EXAMPLE: 150-012-W-067-05)



TYPE 6
VIEW A-A



TYPE 4
VIEW A-A



TYPE 2
VIEW B-B

ALL BOTTOM TERMINAL VIEWS
WITH SPADE

TOP TERMINAL VIEW
WITH SPADE

FORMAT A	CAGE CODE	DRAWING NO. S-2766-1818	REVISION H
SCALE 1:6		GENERATED BY: SolidWorks 2013	SHEET 2 of 3

MODEL SHOWN
ON PAGE 1

SPADE THICKNESS


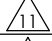
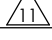
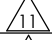
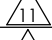
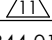
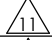
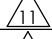
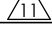
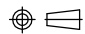
Model #	Part No. for Rod Assembly	Amps	Rod Dia(in)	LOA	LUF	BOTTOM TERMINAL					TOP TERMINAL			SPADE THK	Cap Dwg #
						Type	Description	Thread	C-C	B	Type	Description	T		
150-012-W-067-01	S-2766-3059	1200	1.250	998.0	516.0	3	2 HOLES	5/16-18 UNC	3/4"	8.4	1	1_1/4-12UNF	110.0	N/A	S-1016-0008
150-012-W-067-02	S-2766-3060	1200	1.250	1152.0	669.0	4	SPADE	N/A	N/A	161.4	1	1_1/4-12UNF	111.0	1/2"	S-1016-0008
150-012-W-067-03	S-2766-3061	1200	1.250	1080.0	598.0	5	1_1/4-12UNF	N/A	N/A	90.4	1	1_1/4-12UNF	110.0	N/A	S-1016-0008
150-012-W-067-04	S-2766-3062	1200	1.250	1051.0	516.0	3	2 HOLES	5/16-18 UNC	3/4"	8.4	2	SPADE	163.0	1/2"	
150-012-W-067-05	S-2766-3063	1200	1.250	1204.0	669.0	6	SPADE	N/A	N/A	161.4	2	SPADE	163.0	1/2"	
150-012-W-067-06	S-2766-3064	1200	1.250	1132.0	598.0	5	1_1/4-12UNF	N/A	N/A	90.4	2	SPADE	162.0	1/2"	
150-020-W-067-07	S-2766-3065	2000	1.750	998.0	516.0	3	2 HOLES	3/8-16 UNC	1"	8.4	1	1_3/4-12UNF	111.7	N/A	S-1600-0587
150-020-W-067-08	S-2766-3066	2000	1.750	1152.0	669.0	4	SPADE	N/A	N/A	161.4	1	1_3/4-12UNF	112.7	1/2"	S-1600-0587
150-020-W-067-09	S-2766-3067	2000	1.750	1080.0	598.0	5	1_3/4-12UNF	N/A	N/A	90.4	1	1_3/4-12UNF	111.7	N/A	S-1600-0587
150-020-W-067-10	S-2766-3068	2000	1.750	1051.0	516.0	3	2 HOLES	3/8-16 UNC	1"	8.4	2	SPADE	164.7	1/2"	
150-020-W-067-11	S-2766-3069	2000	1.750	1204.0	669.0	6	SPADE	N/A	N/A	161.4	2	SPADE	164.7	1/2"	
150-020-W-067-12	S-2766-3070	2000	1.750	1132.0	598.0	5	1_3/4-12UNF	N/A	N/A	90.4	2	SPADE	163.7	1/2"	
150-030-W-067-13	S-2766-3071	3000	2.000	998.0	516.0	3	2 HOLES	1/2-13 UNC	1_1/4"	8.4	1	2-12UNF	112.6	N/A	S-1344-0162
150-030-W-067-14	S-2766-3072	3000	2.000	1152.0	669.0	4	SPADE	N/A	N/A	161.4	1	2-12UNF	113.6	3/4"	S-1344-0162
150-030-W-067-15	S-2766-3073	3000	2.000	1080.0	598.0	5	2-12UNF	N/A	N/A	90.4	1	2-12UNF	112.6	N/A	S-1344-0162
150-030-W-067-16	S-2766-3074	3000	2.000	1051.0	516.0	3	2 HOLES	1/2-13 UNC	1_1/4"	8.4	2	SPADE	165.6	3/4"	
150-030-W-067-17	S-2766-3075	3000	2.000	1204.0	669.0	6	SPADE	N/A	N/A	161.4	2	SPADE	165.6	3/4"	
150-030-W-067-18	S-2766-3076	3000	2.000	1132.0	598.0	5	2-12UNF	N/A	N/A	90.4	2	SPADE	164.6	3/4"	

TABLE 1,1

FORMAT A	CAGE CODE	DRAWING NO. S-2766-1818	REVISION H
SCALE 1:6		GENERATED BY: SolidWorks 2013	SHEET 3 of 3