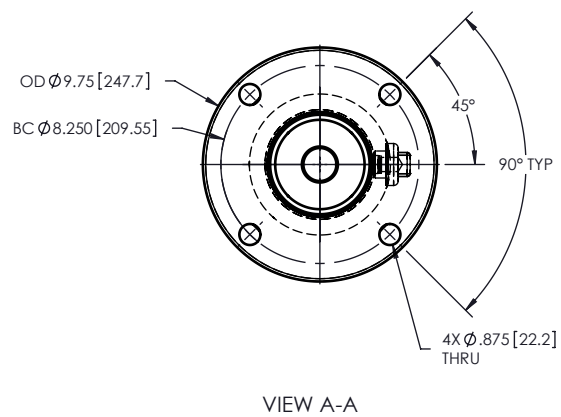
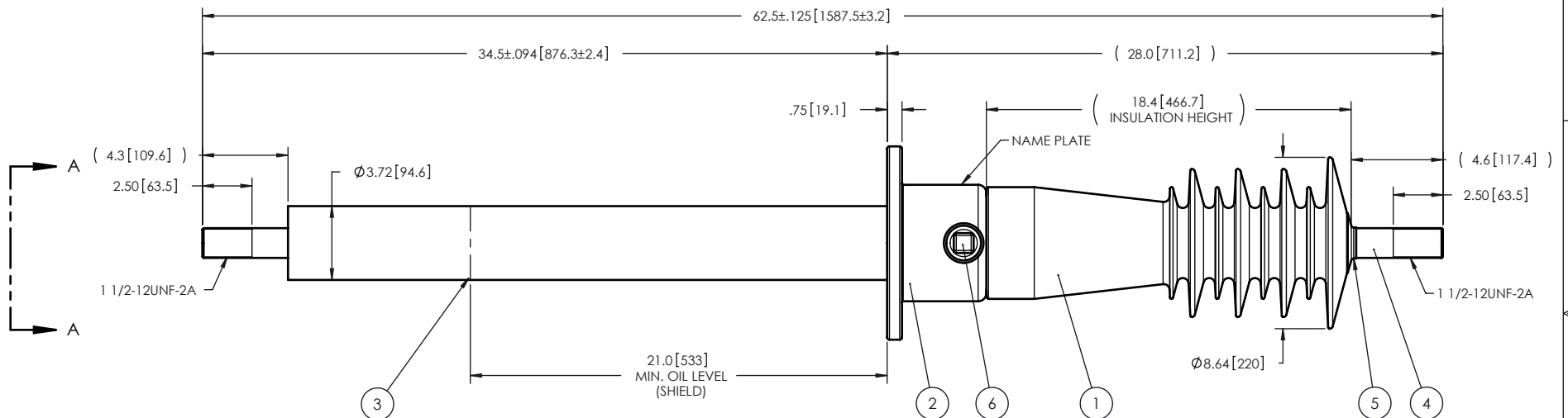


- NOTES:
- 1 CREEPAGE DISTANCE: 38.9" / 987mm
 - 2 ARC DISTANCE: 20.5" / 520mm
 - 3 NOMINAL VOLTAGE: 46kV
 - 4 NOMINAL CURRENT: 1200A
 - 5 WITHSTAND VOLTAGE AT 60 sec.: 105kV
 - 6 B.I.L. : 250kV
 - 7 ROUTINE TEST ACCORDING TO: IEEE C57.19.01
 - 8 MAX. TORQUE APPLIED ON FLANGE BOLTS: 40 lbf x ft
 - 9 WEIGHT: 88 lbs / 40.1 Kg

REVISIONS					
ZONE	REV.	DESCRIPTION	DRAWN BY	DATE	APPR.



ITEM NO.	QTY	DRAWING NO.	PART NO.	DESCRIPTION	NOTE / MAT'L
6	1	S-1001-2022		CAPACITANCE TAP ASSEMBLY	ALUMINUM
5	1	S-1001-0007		CAP	COPPER
4	1	S-6223-5831		ROD ASSEMBLY	COPPER
3	1	S-5171-4713		SHIELD ASSEMBLY	COPPER
2	1	S-5171-4712		FLANGE	ALUMINUM
1	1			CASTING, CYCLOALIPHATIC RESIN	EC-APG-02

PARTS LIST					
GENERAL TOLERANCES (UNLESS OTHERWISE SPECIFIED) X. ±0.125 .X ±0.094 .XX ±0.063 .XXX ±0.031 ANGLES ±0.25° RADIUS ±0.031		REPLACE: DRAWN BY: A.SAVARD DATE: 2010/04/21 CHECK BY: PROJECT ENG.: PROJECT MANAGER:		ElectroComposites™ solid HV bushings solution TITLE: BUSHING 46kV, 1200A MODEL: 250-012-T-081-03	
REMOVE BURRS AND BREAK SHARP EDGES DIMENSIONS ARE IN INCHES (UNLESS OTHERWISE SPECIFIED)		SCALE: 1:8	CAGE CODE: A	DRAWING NO.: S-6223-5819	REVISION: NR
GENERATED BY: SolidWorks 2009			SHEET: 1 of 1		

This drawing is the proprietary property of Electro Composites (2008) ULC, not part of the public domain, and is issued with the express understanding and agreement that it is not to be reproduced or copied in whole or in part or issued for furnishing information to others, or used directly or indirectly, in any way detrimental to the interest of Electro Composites (2008) ULC and is to be returned upon request by Electro Composites (2008) ULC. All Rights Reserved.