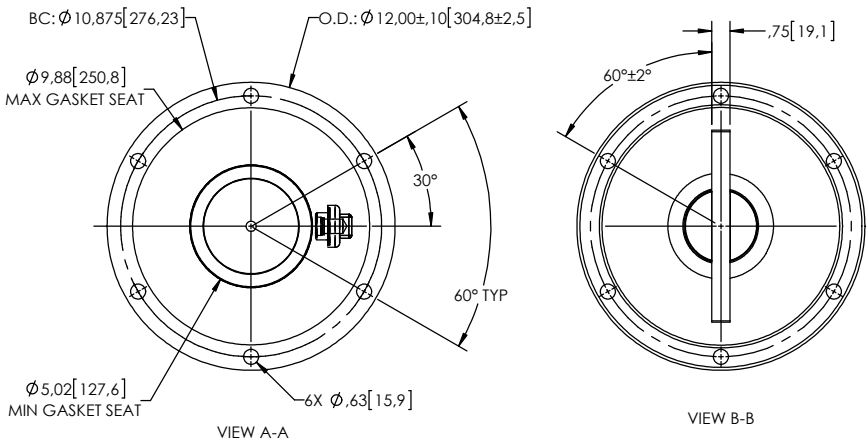
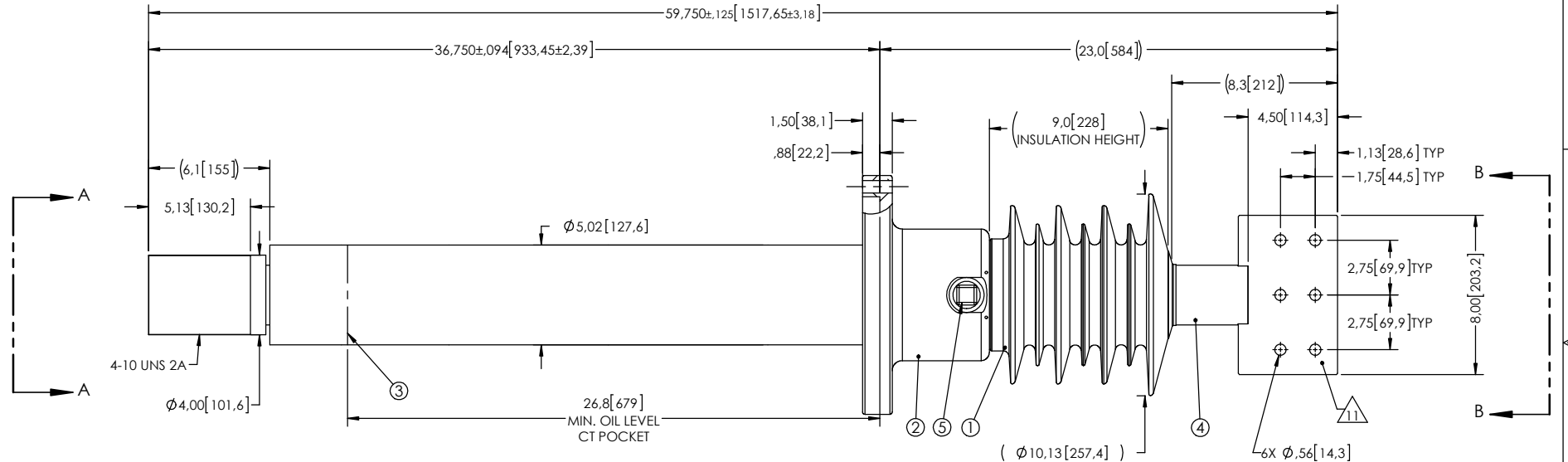


NOTES:

- 1 CREEPAGE DISTANCE: 27.2"/692mm
- 2 ARC DISTANCE: 12"/304mm
- 3 NOMINAL VOLTAGE: 15kV
- 4 NOMINAL CURRENT: 4000A
- 5 WITHSTAND VOLTAGE AT 60 sec.: 50kV
- 6 B.I.L. : 110kV
- 7 ROUTINE TEST ACCORDING TO: IEEE C57.19.01
- 8 MAX. TORQUE APPLIED ON FLANGE BOLTS: 70 lbf ft /94.9 N.m
- 9 WEIGHT 205 lbs /92.8 kg
- 10 MAXIMUM OPERATING TEMPERATURE: 130°C

11 SILVER PLATED, AS PER ASTM B700, TYPE 1, GRADE D, CLASS N, NO NICKEL LAYER, FROM 13 TO 20 MICROMETERS THICKNESS

REVISIONS					
ZONE	REV.	DESCRIPTION	DRAWN BY	DATE	APPR.



ITEM NO.	QTY	DRAWING NO.	PART NO.	DESCRIPTION	NOTE / MATL
5	1	S-1001-2022		CAPACITANCE TAP ASSEMBLY	ALUMINUM
4	1	S-4675-9453		ROD ASSEMBLY	COPPER
3	1	S-4675-9452		SHIELD	COPPER
2	1	S-4675-9451		FLANGE	ALUMINUM
1	1	S-4675-9450	-001	CASTING, CYCLOAPHATIC RESIN	EC-APG-15 NA

<p>GENERAL TOLERANCES (UNLESS OTHERWISE SPECIFIED)</p> <p>X. ±0.125                  .X ±0.094                  .XX ±0.063                  .XXX ±0.010                  ANGLES ±0.25°                  RADIUS ±0.031</p>		<p>REMOVE BURRS AND BREAK SHARP EDGES</p> <p>DIMENSIONS ARE IN INCHES (UNLESS OTHERWISE SPECIFIED)</p>		<p><b>ElectroComposites™</b>  <b>solid HV bushings solution</b></p> <p>TITLE:                  SDC® BUSHING 15kV, 4000A                  MODEL: 110-040-T-1000-00</p>	
DRAWN BY: J.N.PILOTTE	DATE: 2017/09/05	PROJECT NO.:	PROJECT MANAGER:	SCALE: 1:8	GENERATED BY: SolidWorks 2013
CHECK BY:	PROJECT ENG.:	PROJECT MANAGER:	PROJECT MANAGER:	SHEET: 1 of 1	SHEET: 1 of 1

This drawing is the proprietary property of Electro Composites (2008) ULC, not part of the public domain, and is issued with the express understanding and agreement that it is not to be reproduced or copied in whole or in part or issued for furnishing information to others, or used directly or indirectly, in any way detrimental to the interest of Electro Composites (2008) ULC and is to be returned upon request by Electro Composites (2008) ULC. All Rights Reserved.