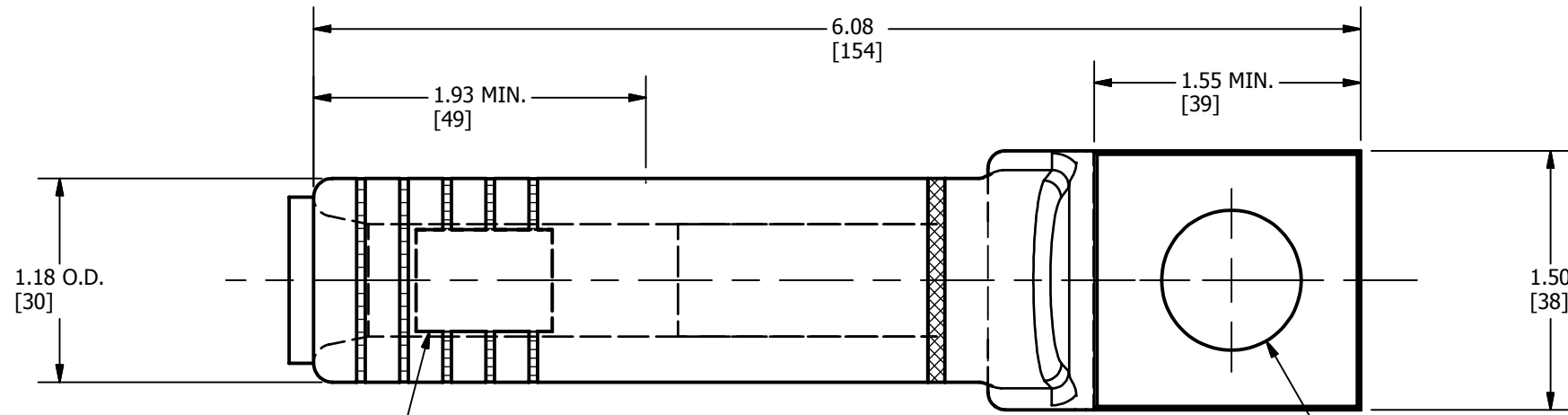


ACCOMMODATES		BURNDY® INSTALLATION TOOLING (# OF CRIMPS)				
ALUMOWELD CABLE	STEEL CABLE	DIE INFORMATION		HYDRAULIC		
		DIE INDEX	TYPE	Y35, Y39, Y750 BAT35 BAT750	Y46 <5	Y45 <4
7 #6 (.486)	1/2 STEEL 7 STR.	679	DIE SET	U679 (4)	U679 (4)	U679 (4)

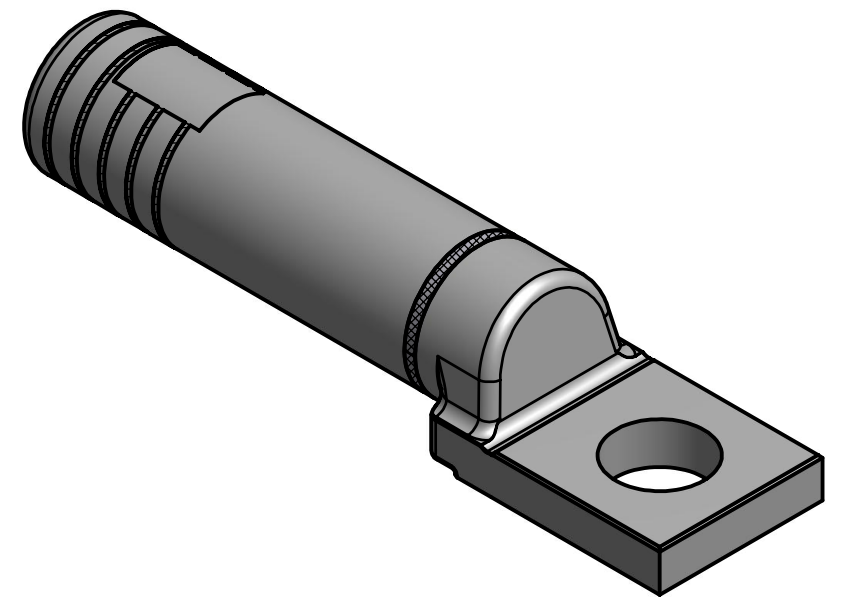
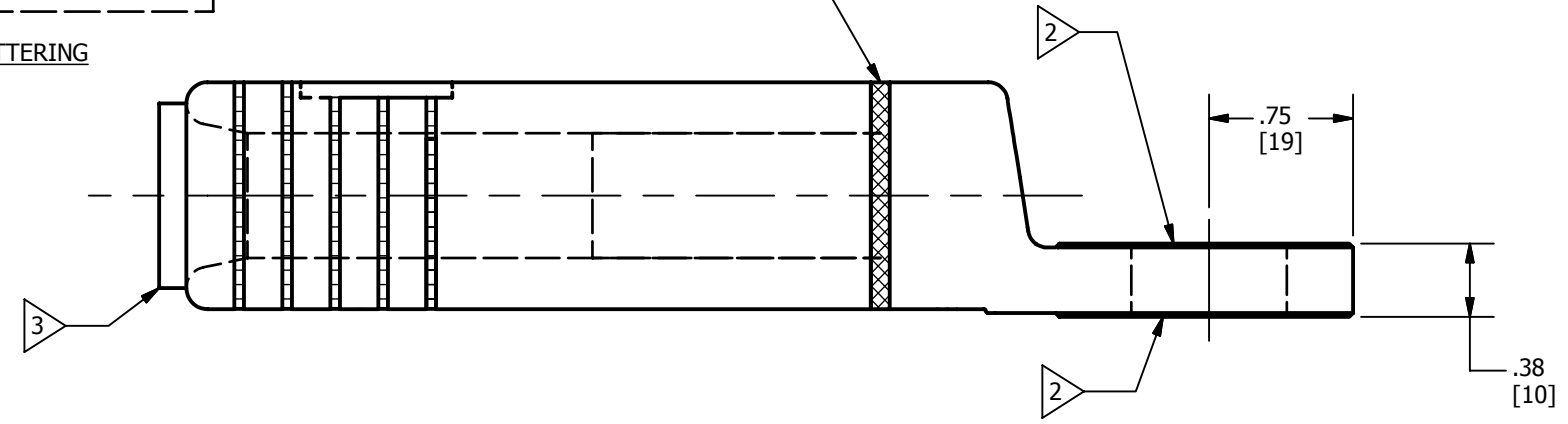
REV	DATE	DESCRIPTION	ECO	BY	CHK.
C	04/10/2015	REDRAWN IN INVENTOR	39846	LM	MB



**BURNDY® YNA7M6TG1**  
 7 #6 ALUMOWELD  
 1/2 STEEL 7 STR.  
 DIE 679 SPACE CRIMPS

LETTERING

FACTORY WELD



**NOTES:**

- MATERIAL: TONGUE - CAST ALUMINUM  
BARREL - ALUMINUM
- CONTACT SURFACES COATED WITH AN OXIDE INHIBITOR.
- BARREL PARTIALLY FILLED WITH PENETROX™ AND SEALED.
- CATALOG #PT6515 ADAPTOR IS REQUIRED TO USE "U" DIES IN Y45 SERIES TOOLS.
- CATALOG #PUADP-1 ADAPTOR IS REQUIRED TO USE "U" DIES IN Y46 SERIES TOOLS.
- DIMENSIONS IN BRACKETS [ ] ARE IN MILLIMETERS ROUNDED OFF TO THE NEAREST MILLIMETER, UNLESS OTHERWISE SPECIFIED AND ARE FOR REFERENCE ONLY.
- THIS CONNECTOR IS NOT RECOMMENDED FOR FULL TENSION APPLICATION.

TO ORDER BURNDY® PRODUCTS CALL		STATIC WIRE TERMINAL	
UNITED STATES 1-800-346-4175 (LONDONDERRY, NH)		ITEM NO: 26002121	
CANADA: 1-800-361-6975 (QUEBEC) 1-800-387-6487 (ALL OTHER PROVINCES)		CAT. NO: YNA7M6TG1	
FOR PRODUCT INFO: <a href="http://www.burndy.com">http://www.burndy.com</a>		DRAWN BY: P LAPONIUS 02-22-02	
		CHECKER: J MICHAUD 02-25-02	
		DSN APRVL: J MICHAUD 02-25-02	
		MFG APRVL: N/A 04-10-15	
		QA APRVL: J BRODEUR 02-25-02	
		MKT APRVL: HAMILTON 02-25-02	
		PROJ #: --	
		DRAWING NO	
		10001611	
		REV	
		C	
		SHEET 1 OF 1	