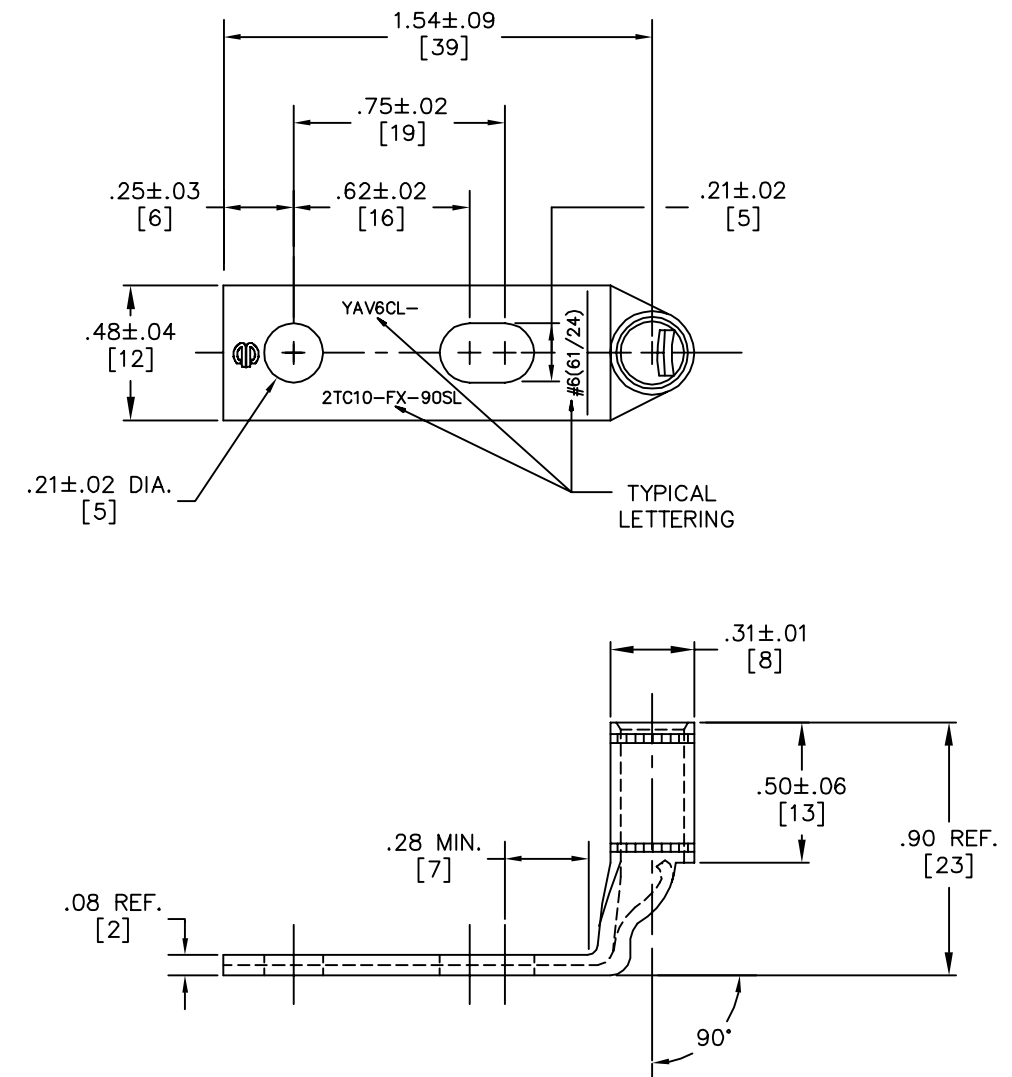


DRAWING NO. 10009365	CONDUCTOR				BOLT SIZE	METRIC BOLT SIZE	DIE INDEX	COLOR CODE	BURNDY INSTALLATION TOOLING (# CRIMPS)						WIRE STRIP LENGTH	
	CATALOG NO.	FLEX	CODE (AWG.)	NAVY					METRIC	MECHANICAL		HYDRAULIC				DIELESS (# CRIMPS)
										MD7-34R MD6 OUR840	Y122CMR	BCT500HS Y500CTHS	Y35, Y39, Y750 PAT750	Y46		
YAV6CL-2TC10-FX-90SL	#6 WELD 61/24	#6 AWG.	30	-----	#10	M5	7 OR 374	BLUE	W5CRT X5CRT W5CVT (1)	2 CRIMPS	W5CRT X5CRT W5CVT (1)	U5CRT (1)	-----	-----	MRC840(1) MY29-3(1) MY29-11(1) Y8MRB-1(1) Y1MRTC(1) Y81KFT(1) Y81KFTMBH(1) PAT81KFT-18V(1)	1/2"



- NOTES:**
- MATERIAL: COPPER TUBING.
 - FINISH: TIN PLATED.
 - CANNOT BE INSTALLED WITH Y45 SERIES TOOLS.
 - CANNOT BE INSTALLED WITH Y46 SERIES TOOLS.
 - PERMANENT DIE IN TOOLING.
 - DIMENSIONS IN [] BRACKETS ARE IN MILLIMETERS, ROUNDED OFF TO THE NEAREST MILLIMETER UNLESS OTHERWISE NOTED, AND ARE FOR REFERENCE ONLY.

TO ORDER BURNDY® PRODUCTS CALL
 UNITED STATES:
 1-800-346-4175 (LONDONDERRY, NH)
 CANADA:
 1-800-361-6975 (QUEBEC)
 1-800-387-6487 (ALL OTHER PROVINCES)
 FOR PRODUCT INFO: <http://www.burndy.com>

HYLUG™	
ITEM NO: 10009364	
CAT NO: YAV6CL-2TC10-FX-90SL	
SCALE: 1:1	
DRAWN BY: D. BOISVERT 6/20/02	
CHECKER: B. MICHAUD 6/20/02	
DSN APPVL: J. MICHAUD 6/14/01	
MFG APPVL: N/A ---	
QC APPVL: J. BRODEUR 6/17/02	
MKT APPVL: K. WOO 6/19/02	
PROD FAM: ---	DRAWING NO
PROJECT #: ---	10009365
DOCUMENT TYPE: Sales	SIZE
REL LEVEL: Released	D
	SHEET 1 of 1

REV.	DATE	DESCRIPTION	ECO	BY	C'K'D.
C	08/19/2015	ADDED NOTE 7	41306	BSB	RG