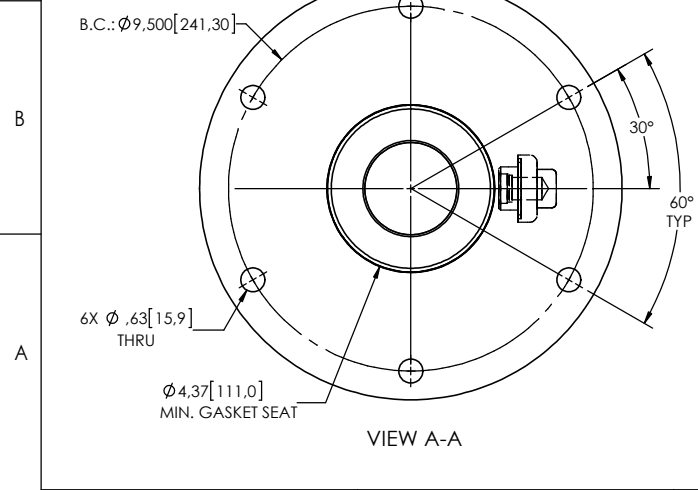
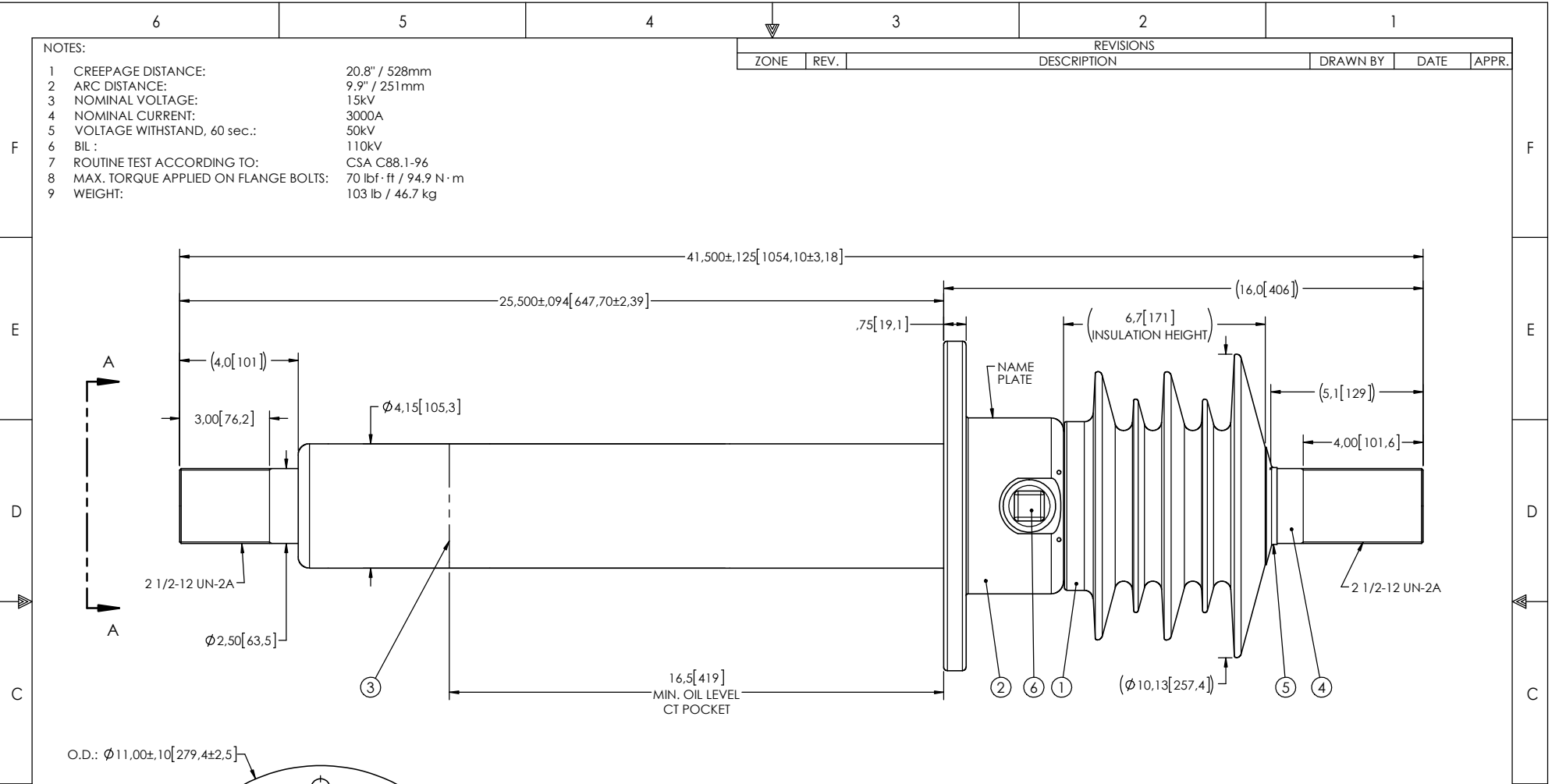


- NOTES:
- 1 CREEPAGE DISTANCE: 20.8" / 528mm
 - 2 ARC DISTANCE: 9.9" / 251mm
 - 3 NOMINAL VOLTAGE: 15kV
 - 4 NOMINAL CURRENT: 3000A
 - 5 VOLTAGE WITHSTAND, 60 sec.: 50kV
 - 6 BIL : 110kV
 - 7 ROUTINE TEST ACCORDING TO: CSA C88.1-96
 - 8 MAX. TORQUE APPLIED ON FLANGE BOLTS: 70 lbf·ft / 94.9 N·m
 - 9 WEIGHT: 103 lb / 46.7 kg

REVISIONS					
ZONE	REV.	DESCRIPTION	DRAWN BY	DATE	APPR.



This drawing is the proprietary property of Electro Composites (2008) ULC, not part of the public domain, and is issued with the express understanding and agreement that it is not to be reproduced or copied in whole or in part or issued for furnishing information to others, or used directly or indirectly, in any way detrimental to the interest of Electro Composites (2008) ULC and is to be returned upon request by Electro Composites (2008) ULC. All Rights Reserved.

ITEM NO.	QTY	DRAWING NO.	PART NO.	DESCRIPTION	NOTE / MAT'L
6	1	S-1001-2022		CAPACITANCE TAP ASSEMBLY	ALUMINUM
5	1	S-3692-2417-0		CAP	COPPER
4	1	S-8194-9461		ROD ASSEMBLY	COPPER
3	1	S-6411-5989		SHIELD ASSEMBLY	COPPER
2	1	S-8194-9460		FLANGE	ALUMINUM
1	1	S-8194-9459	-001	CASTING, CYCLOALIPHATIC RESIN	EC-APG-02

PARTS LIST					
GENERAL TOLERANCES (UNLESS OTHERWISE SPECIFIED)			<p>Electro Composites solid HV bushings solution</p> <p>TITLE: SDC® BUSHING 15kV, 3000A MODEL: 110-030-T-1001-00</p>		
X.	±0.125				
.X	±0.094			DRAWN BY: J. CLICHE	DATE: 2017/09/13
.XX	±0.063			CHECK BY:	
.XXX	±0.031			PROJECTING:	
ANGLES	±0.25°			PROJECT MANAGER:	
RADIUS	±0.031			SCALE: 1:5	GENERATED BY: SolidWorks 2013
REMOVE BURRS AND BREAK SHARP EDGES			CAGE CODE: S-8194-9459		
DIMENSIONS ARE IN INCHES (UNLESS OTHERWISE SPECIFIED)			REVISION: NR		
			SHEET: 1 of 1		