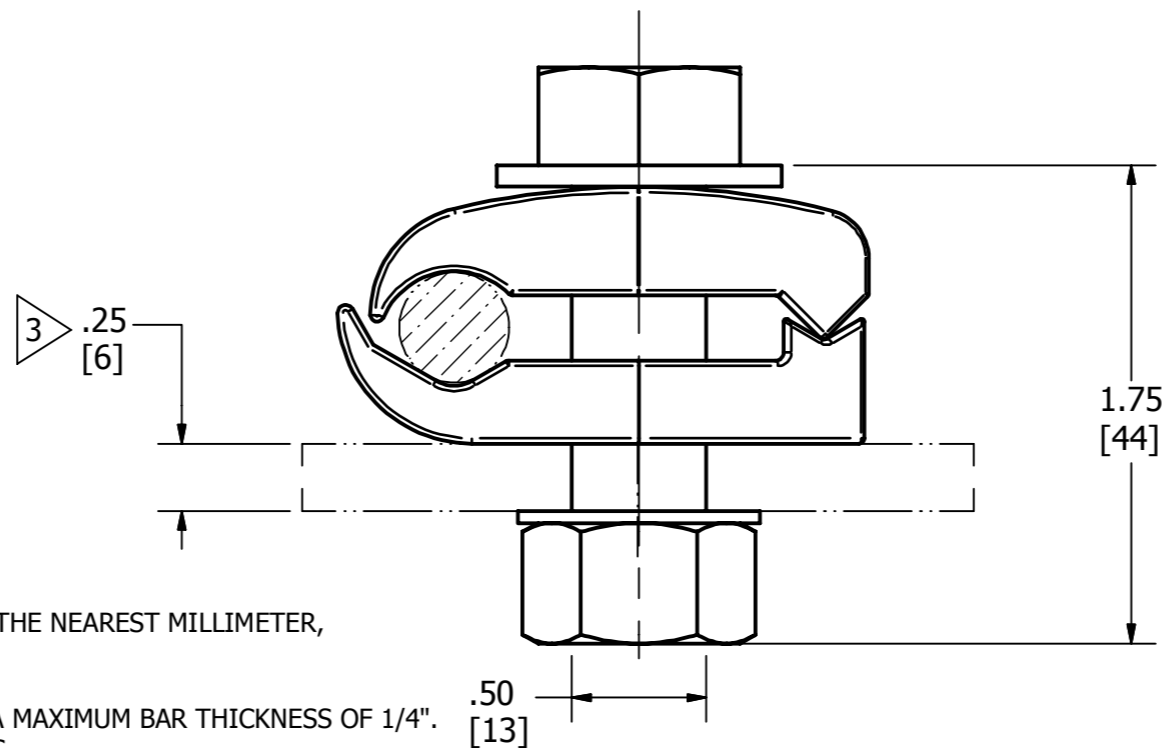
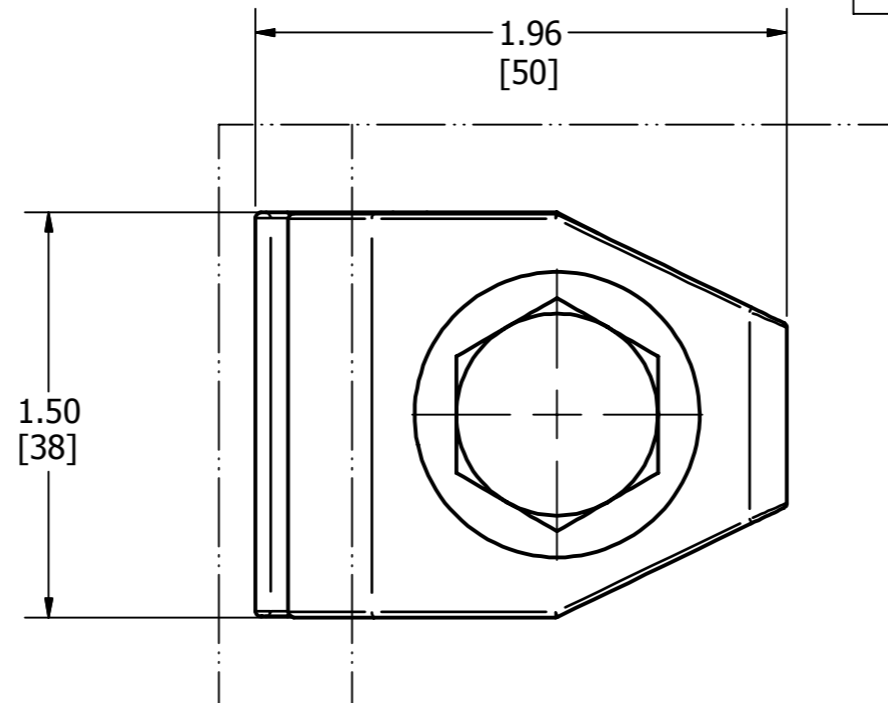


REV	DATE	DESCRIPTION	ECO	BY	C'H'K.
B	08/12/2013	NEW DRAWING CREATED FOR CAT.# GB29G69HEX	32735	MVP	MB



NOTES:

- MATERIAL:
BODY : CAST COPPER ALLOY.
HARDWARE : SILICON BRONZE
- DIMENSIONS IN BRACKETS [] ARE IN MILLIMETERS ROUNDED OFF TO THE NEAREST MILLIMETER, UNLESS OTHERWISE SPECIFIED AND ARE FOR REFERENCE ONLY.
- STANDARD BASIC CATALOG NUMBER AND BOLT LENGTH IS BASED ON A MAXIMUM BAR THICKNESS OF 1/4".
ADD - T4 SUFFIX FOR USE ON A BAR WITH A 1/2" MAXIMUM THICKNESS.
ADD - T8 SUFFIX FOR USE ON A BAR WITH A 1" MAXIMUM THICKNESS.
- ACCOMMODATES:
AWG 2/0 SOLID (.365 DIA.) TO 250 kcmil (.575 DIA.) STRANDED COPPER
70mm² (10.9mm) TO 120mm² (14.4mm) CLASS 2 STRANDED COPPER.
- RECOMMENDED TIGHTENING TORQUE 480 INCH POUNDS.
TO GREATLY REDUCE OR EXCEED THE RECOMMENDED TORQUE CAN ADVERSELY AFFECT THE PERFORMANCE ON THE CONNECTOR.

TO ORDER BURNDY® PRODUCTS CALL
 UNITED STATES
 1-800-346-4175 (LONDONDERRY, NH)
 CANADA:
 1-800-361-6975 (QUEBEC)
 1-800-387-6487 (ALL OTHER PROVINCES)
 FOR PRODUCT INFO: <http://www.burndy.com>

GROUNDING CONNECTOR	
ITEM NO: 26423G	
CAT. NO: GB29G69HEX	
DRAWN BY: MANIMEKALA 08/12/2013	
CHECKER: --	
DSN APRV: L TROMBLEY 08/28/2013	
MFG APRV: --	
QA APRV: C KOWALCZYK 09/06/2013	
MKT APRV: P THERRIEN 08/30/2013	
PROD FAM: GROUNDING	DRAWING NO
PROJECT #: 10020194	REV
DOCUMENT TYPE: Sales	B
REL LEVEL: Released	SHEET 1 OF 1

