

10025188

REV.	DATE	DESCRIPTION	ECO	BY	C.H.K.
A	03/28/03	ENHANCE AND RELEASE NEW DRAWINGS	8394	RGL	--

CATALOG NO.	L	FIGURE NO.	CABLE RANGE	CABLE DIA.		B	J
				MIN.	MAX.		
CPR36A4	4.00 [102]	FIG. 1	350 - 600 AAC 336.4 - 477 ACSR	.680 [17.2]	.893 [22.7]	1.75 [44]	1/2-13 [13]
CPR36A6	6.00 [152]	FIG. 2					
CPR36A8	8.00 [203]						
CPR36A12	12.00 [305]						
CPR42A4	4.00 [102]	FIG. 1	600 - 900 AAC 556.5 - 795 ACSR	.893 [22.7]	1.094 [27.8]	1.75 [44]	1/2-13 [13]
CPR42A6	6.00 [152]	FIG. 2					
CPR42A8	8.00 [203]						
CPR42A12	12.00 [305]						
CPR45A4	4.00 [102]	FIG. 1	900 - 1250 AAC 954 - 113 ACSR	1.094 [27.8]	1.293 [32.8]	2.13 [54]	5/8-11 [16]
CPR45A6	6.00 [152]	FIG. 2					
CPR45A8	8.00 [203]						
CPR45A12	12.00 [305]						
CPR46A4	4.00 [102]	FIG. 1	1200 - 1600 AAC 1113 - 1351.5 ACSR	1.263 [32.1]	1.459 [37.1]	2.13 [54]	5/8-11 [16]
CPR46A6	6.00 [152]	FIG. 2					
CPR46A8	8.00 [203]						
CPR46A12	12.00 [305]						
CPR48A4	4.00 [102]	FIG. 1	1500 - 2000 AAC 1351.5 - 1750 ACSR	1.412 [35.9]	1.632 [41.4]	2.13 [54]	5/8-11 [16]
CPR48A6	6.00 [152]	FIG. 2					
CPR48A8	8.00 [203]						
CPR48A12	12.00 [305]						
CPR486A4	4.00 [102]	FIG. 1	2000 2500 AAC 1890 - 2167 ACSR	1.632 [41.4]	1.824 [46.3]	2.13 [54]	5/8-11 [16]
CPR486A6	6.00 [152]	FIG. 2					
CPR486A8	8.00 [203]						
CPR486A12	12.00 [305]						

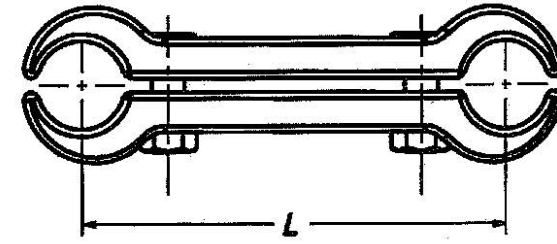
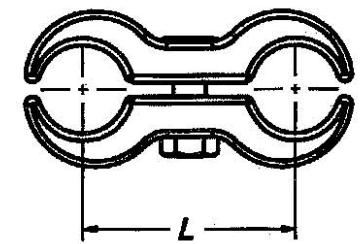
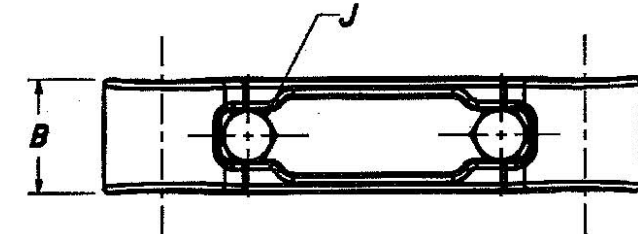
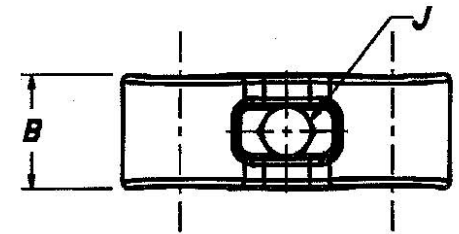


FIG. 1

FIG. 2

NOTES:

- MATERIAL:
- CONNECTOR, 356 CAST ALUMINUM ALLOY
- BOLTS AND NUTS ALUMINUM ALLOY
- RESILIENT WASHERS
- DIMENSIONS IN BRACKETS [] DENOTES METRIC UNITS [SI UNITS] AND ARE ROUNDED TO THE NEAREST WHOLE NUMBER, UNLESS OTHERWISE SPECIFIED THESE UNITS SHALL BE USED FOR REFERENCE ONLY.
- NOT RECOMMENDED FOR APPLICATIONS OVER 230kV.
- NOT RECOMMENDED FOR OVERHEAD TRANSMISSION LINES.
- CLAMPING HARDWARE HAS BEEN SELECTED TO PROVIDE THE REQUIRED FORCE WHEN TIGHTENED TO THE RECOMMENDED TORQUE. TO REDUCE OR GREATLY EXCEED THE RECOMMENDED TORQUE CAN ADVERSELY AFFECT THE PERFORMANCE OF THE CONNECTOR.
- RECOMMENDED TIGHTENING TORQUE:
ALUMINUM HARDWARE:
- 1/2-13 300 INCH POUNDS
- 5/8-11 480 INCH POUNDS

TO ORDER BURNDY PRODUCTS CALL 1-800-348-4175
MANCHESTER, NH 03109, USA
www.burndy.com

2 CONDUCTOR SPACER

ITEM NO: ---

CAT NO: CPR--A-- (TABLE)

SCALE: DRAWING SCALE
DRAWN BY: LAYDIE 03/13/03
CHECKER: -- 01/28/01
DSE APPVL: J NICHAUD 03/19/03
MFG APPVL: P DOERING 03/18/03
QC APPVL: J BRODEUR 03/18/03
MKT APPVL: -- 01/28/01

BURNDY

PROD FAM: --- DRAWING NO: --- REV: ---
PROJECT: LMI2863 SIZE: 10025188
DOCUMENT TYPE: Sales SHEET 1 OF 1
REL LEVEL: Released

REV. P10200