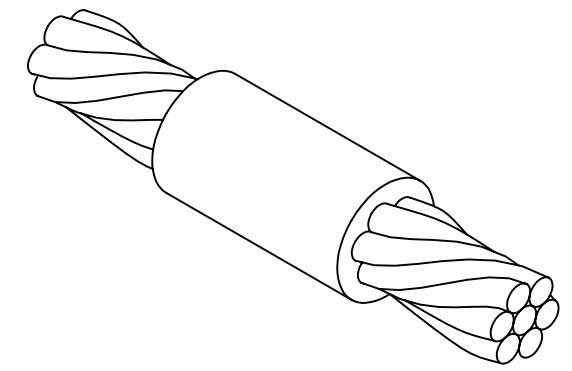
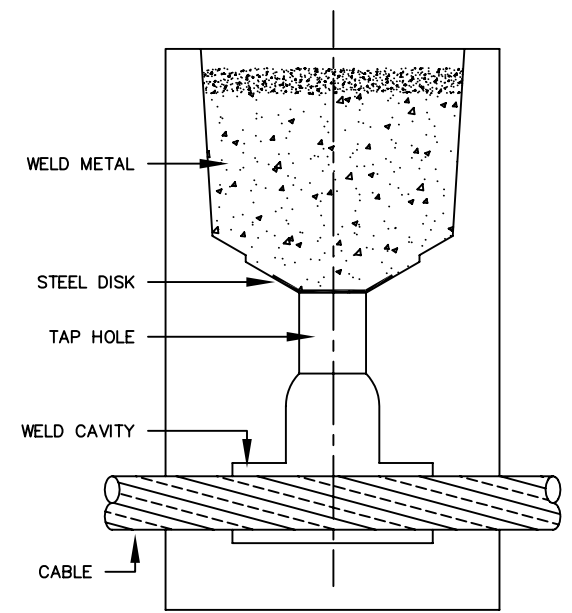


DRAWING NO. 10044339				
BURNDY MOLD CAT. NO.	BURNDY ITEM NUMBER	CABLE	WELD METAL	HANDLE CLAMPS
B-5623*	10047235	#4	25	B40-4565-00
B-5624*	10047236	#3	32	B40-4565-00
B-5625*	10047266	#2	32	B40-4565-00
B-5626*	10047267	#1	32	B40-4565-00
B-205	10047287	1/0	45	B-106
B-206	10047288	2/0	65	B-106
B-207	10047289	3/0	90	B-106
B-208	10047290	4/0	90	B-106
B-209	10047291	250 kcmil	115	B-106
B-210	10047292	300 kcmil	115	B-106
B-211	10047293	350 kcmil	150	B-106
B-213	10047294	500 kcmil	200	B-107
B-214	10047295	750 kcmil	2-150	B-107
B-215	10047296	1000 kcmil	2-200	B-107

REV.	DATE	DESCRIPTION	ECO	BY	C'K'D.
A	12/8/04	DRAWING RELEASED	10262	PL	DS



NOTES:

- BCC-1 TYPE MOLDS ARE USED FOR HORIZONTAL END TO END CABLE CONNECTIONS.
- SIZE RANGE IS #6 THROUGH 1000 kcmil SOLID OR CONCENTRIC STRANDED COPPER CONDUCTORS.
- MOLDS LISTED ARE FOR CONCENTRIC STRANDED CABLE. ADD SUFFIX "-S" TO MOLD NUMBER FOR SOLID CONNECTORS.
- FOR HEAVY DUTY MOLDS, MOLDS WITH WEAR PLATES OR MOLDS FOR COPPERWELD® CABLE, CONTACT BURNDY® PRODUCTS.
- REQUIRED TOOLS: HANDLE CLAMPS (SEE TABLE ABOVE) FOR HANDLES SEE DRAWING 10051615.
*SOLD COMPLETE WITH HANDLES
B38-0309-00 FLINT IGNITOR (DRAWING 10051616).
- OTHER RECOMMENDED ACCESSORIES: DRAWING 10051616
 B40-0319-01: MOLD CLEANER FOR CARTRIDGE SIZES #15 - #65
 B40-0319-03: MOLD CLEANER FOR CARTRIDGE SIZES #90 - #500
 B38-3922-00: MOLD CLEANING BRUSH
 B38-0135-00: CABLE CLEANING BRUSH
 B38-0330-00: CABLE CLAMP

TO ORDER BURNDY® PRODUCTS CALL 1-800-346-4175
 MANCHESTER, NH 03109, USA
 FOR PRODUCT INFO = <http://www.burndy.com>

BURNDYWeld™ HORIZONTAL END TO END SPLICES

ITEM NO: N/A

CAT NO: BCC-1 SERIES

SCALE: N/A

DRAWN BY: P LAPONIUS 12/8/04
 CHECKER: D SHIBILIA 1/3/05
 DSN APPV: D SHIBILIA 1/13/05
 MFG APPV: --- ---

QC APPV: J BRODEUR 1/14/05
 MKT APPV: R ROBICHEAU 1/18/05

PROD FAM: ---
 PROJECT #: ---
 DOCUMENT TYPE: Sales
 REL LEVEL: AutoCAD

BURNDY®

DRAWING NO	REV
10044339	A
SHEET 1 of 1	