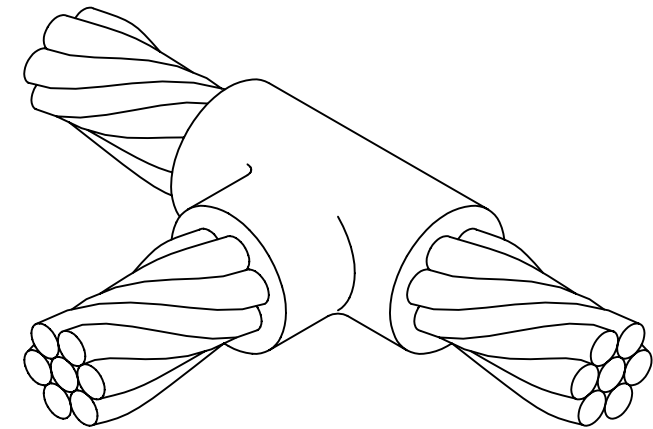
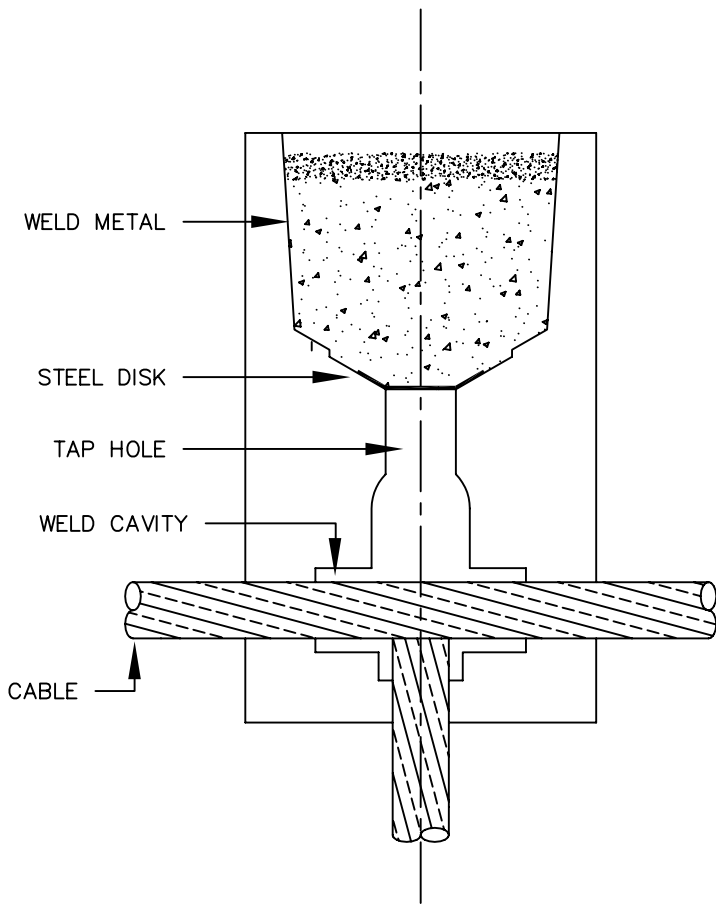


BURNDY MOLD CAT. NO.	BURNDY ITEM NUMBER	CABLE		WELD METAL	HANDLE CLAMPS
		RUN	TAP		
B-5618	-----	#6	#6	25	B40-4565-00
B-221	10047330	#4	#4	32	B-106
B-223	10047331	#2	#2	45	B-106
B-224	10047332	#2	#4	45	B-106
B-225	10047333	#1	#1	45	B-106
B-226	10047334	#1	#2	45	B-106
B-227	10047335	#1	#4	45	B-106
B-228	10047336	1/0	1/0	90	B-106
B-229	10047337	1/0	#1	45	B-106
B-230	10047338	1/0	#2	45	B-106
B-231	10047339	1/0	#4	45	B-106
B-232	10047340	2/0	2/0	90	B-106
B-233	10047341	2/0	1/0	90	B-106
B-234	10047342	2/0	#1	45	B-106
B-235	10047343	2/0	#2	45	B-106
B-5475	10047344	2/0	#4	45	B-106
B-236	10047345	3/0	3/0	115	B-106
B-237	10047346	3/0	2/0	90	B-106
B-238	10047347	3/0	1/0	90	B-106
B-239	10047348	3/0	#1	45	B-106
B-240	10047349	3/0	#2	45	B-106
B-5574	10047350	3/0	#4	45	B-106
B-241	10047351	4/0	4/0	150	B-106
B-242	10047352	4/0	3/0	115	B-106
B-243	10047353	4/0	2/0	90	B-106
B-244	10047354	4/0	1/0	90	B-107
B-245	10047355	4/0	#1	90	B-107
B-246	10047356	4/0	#2	90	B-107
B-5021	10047357	4/0	#4	90	B-106
B-247	10047358	250 kcmil	250 kcmil	150	B-106
B-248	10047359	250 kcmil	4/0	150	B-106
B-249	10047360	250 kcmil	3/0	150	B-106
B-250	10047361	250 kcmil	2/0	90	B-106
B-251	10047362	250 kcmil	1/0	90	B-106
B-252	10047363	250 kcmil	#1	90	B-106
B-253	10047364	250 kcmil	#2	90	B-106



NOTES:

- BCC-2 TYPE MOLDS ARE USED TO JOIN HORIZONTAL CABLE TAP TO A HORIZONTAL RUN CABLE.
- SIZE RANGE IS #6 THROUGH 750 kcmil SOLID OR CONCENTRIC STRANDED COPPER CONDUCTORS.
- MOLDS LISTED ARE FOR CONCENTRIC STRANDED CABLE. ADD SUFFIX "-S" TO MOLD NUMBER FOR SOLID CONNECTORS.
- FOR HEAVY DUTY MOLDS, MOLDS WITH WEAR PLATES OR MOLDS FOR COPPERWELD® CABLE, CONTACT BURNDY® PRODUCTS.
- REQUIRED TOOLS: HANDLE CLAMPS (SEE TABLE ABOVE). FOR HANDLES SEE DRAWING 10051615. B38-0309-00 FLINT IGNITOR (DRAWING 10051616).
- OTHER RECOMMENDED ACCESSORIES; DRAWING 10051616
 B40-0319-01: MOLD CLEANER FOR CARTRIDGE SIZES #15 - #65
 B40-0319-03: MOLD CLEANER FOR CARTRIDGE SIZES #90 - #500
 B38-3922-00: MOLD CLEANING BRUSH
 B38-0135-00: CABLE CLEANING BRUSH
 B38-0330-00: CABLE CLAMP

7 FOR A #6 SPLICE, REFER TO BCC-14 FOUND ON DRAWING 10044344.

TO ORDER BURNDY PRODUCTS CALL 1-800-346-4175
 MANCHESTER, NH 03109, USA
 FOR PRODUCT INFO = <http://www.burndy.com>

TO ORDER BURNDY® PRODUCTS CALL
 UNITED STATES:
 1-800-346-4175 (LONDONDERRY, NH)
 CANADA:
 1-800-361-6975 (QUEBEC)
 1-800-387-6487 (ALL OTHER PROVINCES)
 FOR PRODUCT INFO: <http://www.burndy.com>

BURNDYweld™ HORIZONTAL CABLE TOP TO HORIZONTAL CABLE RUN	
ITEM NO: N/A	
CAT NO: BCC-2 SERIES	
SCALE: N/A	
DRAWN BY: P LAPONIUS 12/8/04	
CHECKER: D SHIBILIA 1/3/05	
DSN APPVL: D SHIBILIA 1/13/05	
MFG APPVL: --	
QC APPVL: J BRODEUR 1/18/05	
MKT APPVL: R ROBICHEAU 1/18/05	
PROD FAM: --	
PROJECT #: --	
DOCUMENT TYPE: Sales	
REL LEVEL: AutoCAD	
DRAWING NO	REV
10044340	A
SHEET 1 OF 3	

