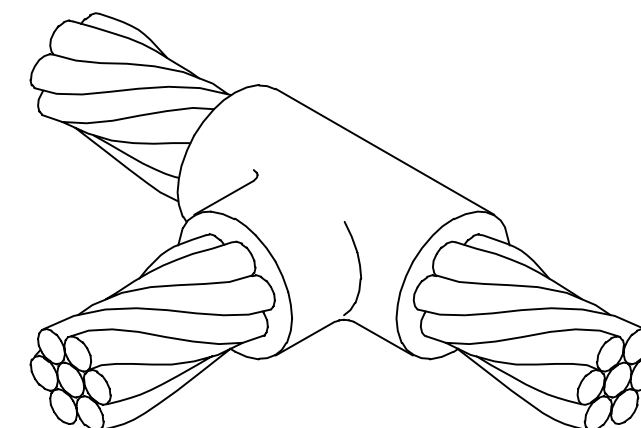
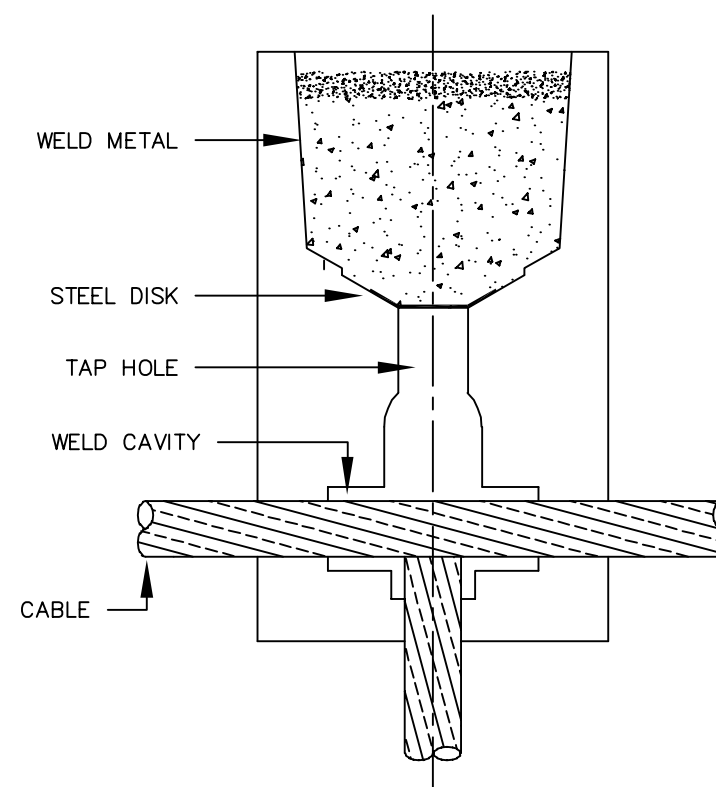


BURNDY MOLD CAT. NO.	CABLE		WELD METAL	HANDLE CLAMPS
	RUN	TAP		
B-5618	#6	#6	25	B40-4565-00
B-221	#4	#4	32	B-106
B-223	#2	#2	45	B-106
B-224	#2	#4	45	B-106
B-225	#1	#1	45	B-106
B-226	#1	#2	45	B-106
B-227	#1	#4	45	B-106
B-228	1/0	1/0	90	B-106
B-229	1/0	#1	45	B-106
B-230	1/0	#2	45	B-106
B-231	1/0	#4	45	B-106
B-232	2/0	2/0	90	B-106
B-233	2/0	1/0	90	B-106
B-234	2/0	#1	45	B-106
B-235	2/0	#2	45	B-106
B-5475	2/0	#4	45	B-106
B-236	3/0	3/0	115	B-106
B-237	3/0	2/0	90	B-106
B-238	3/0	1/0	90	B-106
B-239	3/0	#1	45	B-106
B-240	3/0	#2	45	B-106
B-5574	3/0	#4	45	B-106
B-241	4/0	4/0	150	B-106
B-242	4/0	3/0	115	B-106
B-243	4/0	2/0	90	B-106
B-244	4/0	1/0	90	B-107
B-245	4/0	#1	90	B-107
B-246	4/0	#2	90	B-107
B-5021	4/0	#4	90	B-106
B-247	250 kcmil	250 kcmil	150	B-106
B-248	250 kcmil	4/0	150	B-106
B-249	250 kcmil	3/0	150	B-106
B-250	250 kcmil	2/0	90	B-106
B-251	250 kcmil	1/0	90	B-106
B-252	250 kcmil	#1	90	B-106
B-253	250 kcmil	#2	90	B-106

REV.	DATE	DESCRIPTION	ECO	BY	C'K'D.
B	04/20/21	BW-058 MOLD DETAILS ADDED	210415007175	PB	RG



NOTES:

- BCC-2 TYPE MOLDS ARE USED TO JOIN HORIZONTAL CABLE TAP TO A HORIZONTAL RUN CABLE.
- SIZE RANGE IS #6 THROUGH 750 kcmil SOLID OR CONCENTRIC STRANDED COPPER CONDUCTORS.
- MOLDS LISTED ARE FOR CONCENTRIC STRANDED CABLE. ADD SUFFIX "-S" TO MOLD NUMBER FOR SOLID CONNECTORS.
- FOR HEAVY DUTY MOLDS, MOLDS WITH WEAR PLATES OR MOLDS FOR COPPERWELD® CABLE, CONTACT BURNDY® PRODUCTS.
- REQUIRED TOOLS: HANDLE CLAMPS (SEE TABLE ABOVE). FOR HANDLES SEE DRAWING 10051615. B38-0309-00 FLINT IGNITOR (DRAWING 10051616).
- OTHER RECOMMENDED ACCESSORIES; DRAWING 10051616
 - B40-0319-01: MOLD CLEANER FOR CARTRIDGE SIZES #15 - #65
 - B40-0319-03: MOLD CLEANER FOR CARTRIDGE SIZES #90 - #500
 - B38-3922-00: MOLD CLEANING BRUSH
 - B38-0135-00: CABLE CLEANING BRUSH
 - B38-0330-00: CABLE CLAMP

7 FOR A #6 SPLICE, REFER TO BCC-14 FOUND ON DRAWING 10044344.

TO ORDER BURNDY® PRODUCTS CALL
UNITED STATES:
1-800-346-4175 (LONDONDERRY, NH)

CANADA:
1-800-387-6487

FOR PRODUCT INFO: <http://www.burndy.com>

BURNDYWeld® HORIZONTAL CABLE TOP TO HORIZONTAL CABLE RUN

ITEM NO: N/A

CAT NO: BCC-2 SERIES

SCALE:	N/A
DRAWN BY:	P. LAPONIUS 12/08/04
CHECKER:	D. SHEBILIA 01/13/05
DSN APPVL:	D. SHEBILIA 01/13/05
MFG APPVL:	--
QC APPVL:	J. BRODEUR 01/14/05
MKT APPVL:	R. ROBICHEAU 01/18/06
PROD FAM:	--
PROJECT #:	--
DOCUMENT TYPE:	SALES
REL LEVEL:	AUTOCAD

BURNDY

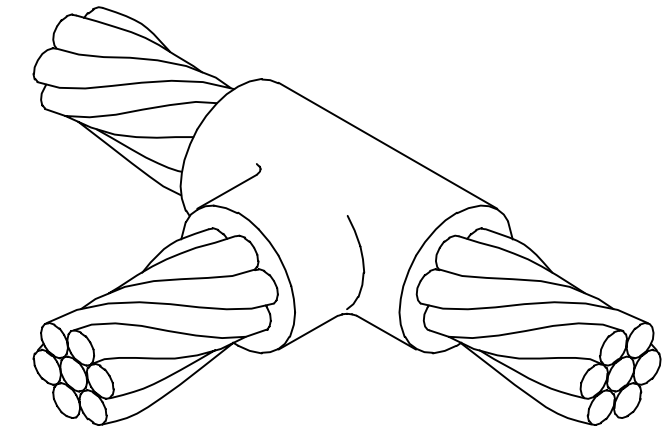
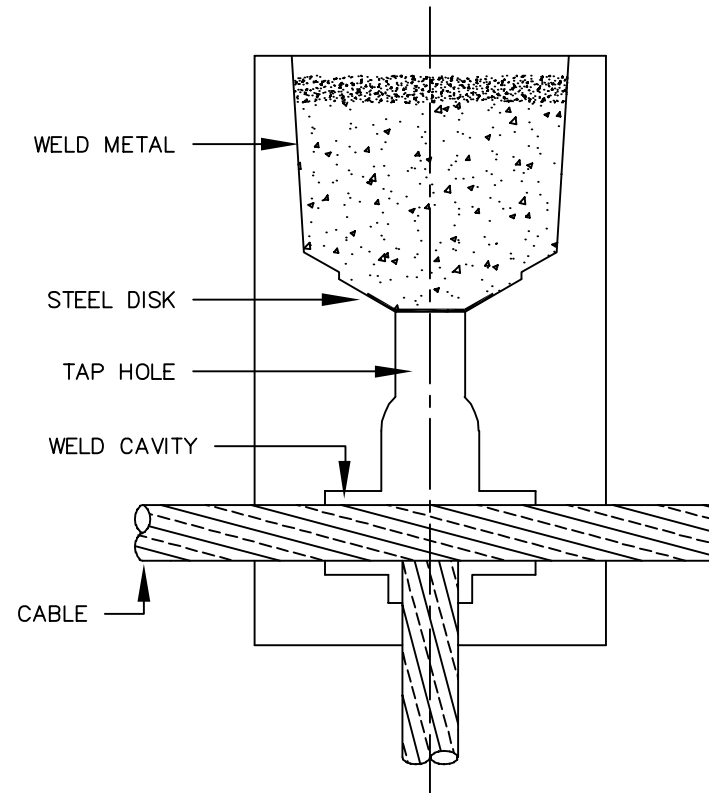
DRAWING NO	REV
10044340	B
SHEET 1 OF 3	

DRAWING NO.

10044340

BURNDY MOLD CAT. NO.	CABLE		WELD METAL	HANDLE CLAMPS
	RUN	TAP		
B-254	300 kcmil	300 kcmil	200	B-106
B-255	300 kcmil	250 kcmil	150	B-106
B-256	300 kcmil	4/0	150	B-106
B-257	300 kcmil	3/0	150	B-106
B-258	300 kcmil	2/0	90	B-106
B-259	300 kcmil	1/0	90	B-106
B-260	300 kcmil	#1	90	B-106
B-261	300 kcmil	#2	90	B-106
BW-058	350 kcmil	19/#6	250	B-106
B-262	350 kcmil	350 kcmil	200	B-106
B-263	350 kcmil	300 kcmil	200	B-106
B-264	350 kcmil	250 kcmil	200	B-106
B-265	350 kcmil	4/0	150	B-106
B-266	350 kcmil	3/0	150	B-106
B-267	350 kcmil	2/0	90	B-106
B-268	350 kcmil	1/0	90	B-106
B-269	350 kcmil	#1	90	B-106
B-270	350 kcmil	#2	90	B-106
B-280	500 kcmil	500 kcmil	2-150	B-106
B-282	500 kcmil	350 kcmil	200	B-106
B-283	500 kcmil	300 kcmil	200	B-106
B-284	500 kcmil	250 kcmil	200	B-106
B-285	500 kcmil	4/0	150	B-106
B-286	500 kcmil	2/0	90	B-106
B-287	500 kcmil	1/0	90	B-106
B-288	500 kcmil	#1	90	B-106
B-289	500 kcmil	#2	90	B-106
B-290	750 kcmil	750 kcmil	500	B-107
B-291	750 kcmil	500 kcmil	2-200	B-107
B-293	750 kcmil	350 kcmil	250	B-106
B-294	750 kcmil	300 kcmil	200	B-106
B-295	750 kcmil	250 kcmil	200	B-106
B-296	750 kcmil	4/0	150	B-106
B-297	750 kcmil	2/0	150	B-106
B-298	750 kcmil	1/0	150	B-106

REV.	DATE	DESCRIPTION	ECO	BY	C'K'D.
B	04/20/21	BW-058 MOLD DETAILS ADDED	210415007175	PB	RG



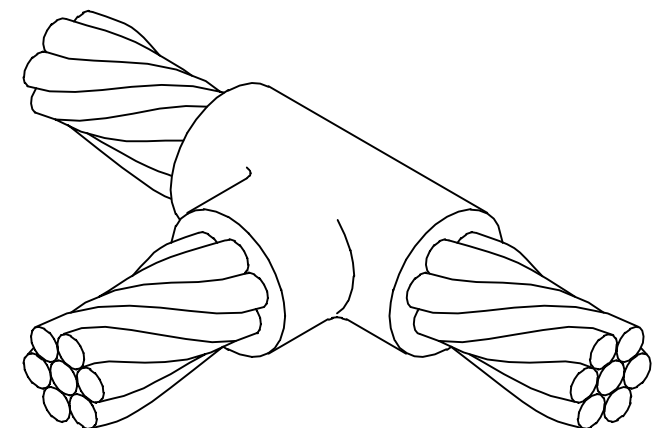
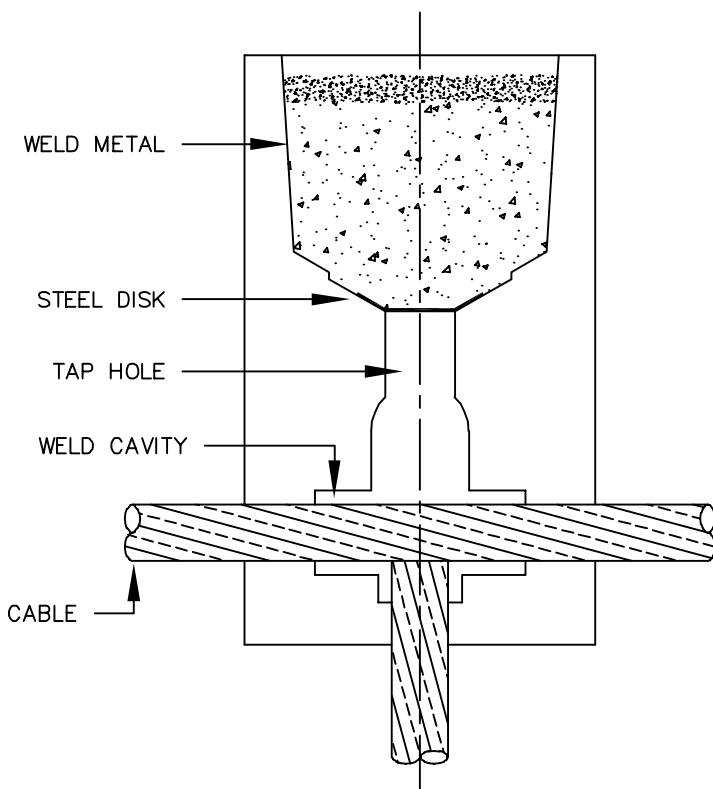
NOTES:

- BCC-2 TYPE MOLDS ARE USED TO JOIN HORIZONTAL CABLE TAP TO A HORIZONTAL RUN CABLE.
- SIZE RANGE IS #6 THROUGH 750 kcmil SOLID OR CONCENTRIC STRANDED COPPER CONDUCTORS.
- MOLDS LISTED ARE FOR CONCENTRIC STRANDED CABLE. ADD SUFFIX "-S" TO MOLD NUMBER FOR SOLID CONNECTORS.
- FOR HEAVY DUTY MOLDS, MOLDS WITH WEAR PLATES OR MOLDS FOR COPPERWELD® CABLE, CONTACT BURNDY® PRODUCTS.
- REQUIRED TOOLS: HANDLE CLAMPS (SEE TABLE ABOVE). FOR HANDLES SEE DRAWING 10051615. B38-0309-00 FLINT IGNITOR (DRAWING 10051616).
- OTHER RECOMMENDED ACCESSORIES: DRAWING 10051616
 B40-0319-01: MOLD CLEANER FOR CARTRIDGE SIZES #15 - #65
 B40-0319-03: MOLD CLEANER FOR CARTRIDGE SIZES #90 - #500
 B38-3922-00: MOLD CLEANING BRUSH
 B38-0135-00: CABLE CLEANING BRUSH
 B38-0330-00: CABLE CLAMP

TO ORDER BURNDY® PRODUCTS CALL
 UNITED STATES:
 1-800-346-4175 (LONDONDERRY, NH)
 CANADA:
 1-800-387-6487
 FOR PRODUCT INFO: <http://www.burndy.com>

BURNDYWeld® HORIZONTAL CABLE TOP TO HORIZONTAL CABLE RUN	
ITEM NO: N/A	
CAT NO: BCC-2 SERIES	
SCALE: N/A	
DRAWN BY: P. LAPONIUS	12/08/04
CHECKER: D. SHEBILIA	01/13/05
DSN APPVL: D. SHEBILIA	01/13/05
MFG APPVL: --	--
QC APPVL: J. BRODEUR	01/14/05
MKT APPVL: R. ROBICHEAU	01/18/06
PROD FAM: --	
PROJECT #: --	SIZE
DOCUMENT TYPE: SALES	D
REL LEVEL: AUTOCAD	
DRAWING NO	REV
10044340	B
SHEET 2 OF 3	

BURNDY MOLD CAT. NO.	CABLE		WELD METAL	HANDLE CLAMPS
	RUN	TAP		
B-299	1000 kcmil	1000 kcmil	500	B-107
B-300	1000 kcmil	750 kcmil	500	B-107
B-301	1000 kcmil	500 kcmil	2-200	B-107
B-303	1000 kcmil	350 kcmil	250	B-106
B-304	1000 kcmil	300 kcmil	200	B-106
B-305	1000 kcmil	250 kcmil	200	B-106
B-306	1000 kcmil	4/0	150	B-106
B-307	1000 kcmil	2/0	150	B-106
B-308	1000 kcmil	1/0	150	B-106
B-309	1250 kcmil	1250 kcmil	3-250	B-107
B-310	1250 kcmil	1000 kcmil	500	B-107
B-311	1250 kcmil	750 kcmil	500	B-107
B-312	1250 kcmil	500 kcmil	2-200	B-107
B-314	1250 kcmil	350 kcmil	2-150	B-107
B-315	1250 kcmil	300 kcmil	250	B-106
B-316	1250 kcmil	250 kcmil	250	B-106
B-317	1250 kcmil	4/0	200	B-106
B-318	1250 kcmil	2/0	200	B-106
B-319	1250 kcmil	1/0	200	B-106
B-320	1500 kcmil	1500 kcmil	2-500	---
B-321	1500 kcmil	1250 kcmil	3-250	B-107
B-322	1500 kcmil	1000 kcmil	3-200	B-107
B-323	1500 kcmil	750 kcmil	3-200	B-107
B-324	1500 kcmil	500 kcmil	2-200	B-107
B-326	1500 kcmil	350 kcmil	2-150	B-107
B-327	1500 kcmil	300 kcmil	250	B-107
B-328	1500 kcmil	250 kcmil	250	B-107
B-329	1500 kcmil	4/0	250	B-107
B-330	1500 kcmil	2/0	250	B-107
B-331	1500 kcmil	1/0	250	B-107
B-332	1750 kcmil	1750 kcmil	2-250	B-107
B-333	1750 kcmil	1500 kcmil	2-500	B-107
B-334	1750 kcmil	1250 kcmil	3-250	B-107
B-335	1750 kcmil	1000 kcmil	3-250	B-107
B-336	1750 kcmil	750 kcmil	3-200	B-107
B-337	1750 kcmil	500 kcmil	2-200	B-107
B-339	1750 kcmil	350 kcmil	2-150	B-107
B-340	1750 kcmil	300 kcmil	250	B-107
B-341	1750 kcmil	250 kcmil	250	B-107
B-342	1750 kcmil	4/0	250	B-107
B-343	1750 kcmil	2/0	250	B-107
B-344	1750 kcmil	1/0	250	B-107
B-345	2000 kcmil	2000 kcmil	3-500	B-107
B-346	2000 kcmil	1750 kcmil	5-250	B-107
B-347	2000 kcmil	1500 kcmil	5-250	B-107
B-348	2000 kcmil	1250 kcmil	2-500	B-107
B-349	2000 kcmil	1000 kcmil	2-500	B-107
B-350	2000 kcmil	750 kcmil	3-200	B-107
B-351	2000 kcmil	500 kcmil	2-200	B-107
B-353	2000 kcmil	350 kcmil	2-150	B-107
B-354	2000 kcmil	300 kcmil	250	B-107
B-355	2000 kcmil	250 kcmil	250	B-107
B-356	2000 kcmil	4/0	250	B-107
B-357	2000 kcmil	2/0	250	B-107
B-358	2000 kcmil	1/0	250	B-107



NOTES:

- BCC-2 TYPE MOLDS ARE USED TO JOIN HORIZONTAL CABLE TAP TO A HORIZONTAL RUN CABLE.
- SIZE RANGE IS #6 THROUGH 750 kcmil SOLID OR CONCENTRIC STRANDED COPPER CONDUCTORS.
- MOLDS LISTED ARE FOR CONCENTRIC STRANDED CABLE. ADD SUFFIX "-S" TO MOLD NUMBER FOR SOLID CONNECTORS.
- FOR HEAVY DUTY MOLDS, MOLDS WITH WEAR PLATES OR MOLDS FOR COPPERWELD® CABLE, CONTACT BURNDY® PRODUCTS.
- REQUIRED TOOLS: HANDLE CLAMPS (SEE TABLE ABOVE). FOR HANDLES SEE DRAWING 10051615.
*SOLD COMPLETE WITH HANDLES
B38-0309-00 FLINT IGNITOR (DRAWING 10051616).
- OTHER RECOMMENDED ACCESSORIES: DRAWING 10051616
B40-0319-01: MOLD CLEANER FOR CARTRIDGE SIZES #15 - #65
B40-0319-03: MOLD CLEANER FOR CARTRIDGE SIZES #90 - #500
B38-3922-00: MOLD CLEANING BRUSH
B38-0135-00: CABLE CLEANING BRUSH
B38-0330-00: CABLE CLAMP

TO ORDER BURNDY® PRODUCTS CALL
UNITED STATES:
1-800-346-4175 (LONDONDERRY, NH)
CANADA:
1-800-387-6487
FOR PRODUCT INFO: <http://www.burndy.com>

BURNDY® HORIZONTAL CABLE TOP TO HORIZONTAL CABLE RUN	
ITEM NO: N/A	
CAT NO: BCC-2 SERIES	
SCALE: N/A	
DRAWN BY: P. LAPONIUS 12/08/04	
CHECKER: D. SHEBILIA 01/13/05	
DSN APPVL: D. SHEBILIA 01/13/05	
MFG APPVL: ---	
QC APPVL: J. BRODEUR 01/14/05	
MKT APPVL: R. ROICHEAU 01/18/06	
PROD FAM: ---	
PROJECT #: ---	
DOCUMENT TYPE: SALES	
REL LEVEL: AUTOCAD	
DRAWING NO	REV
10044340	B
SHEET 3 OF 3	