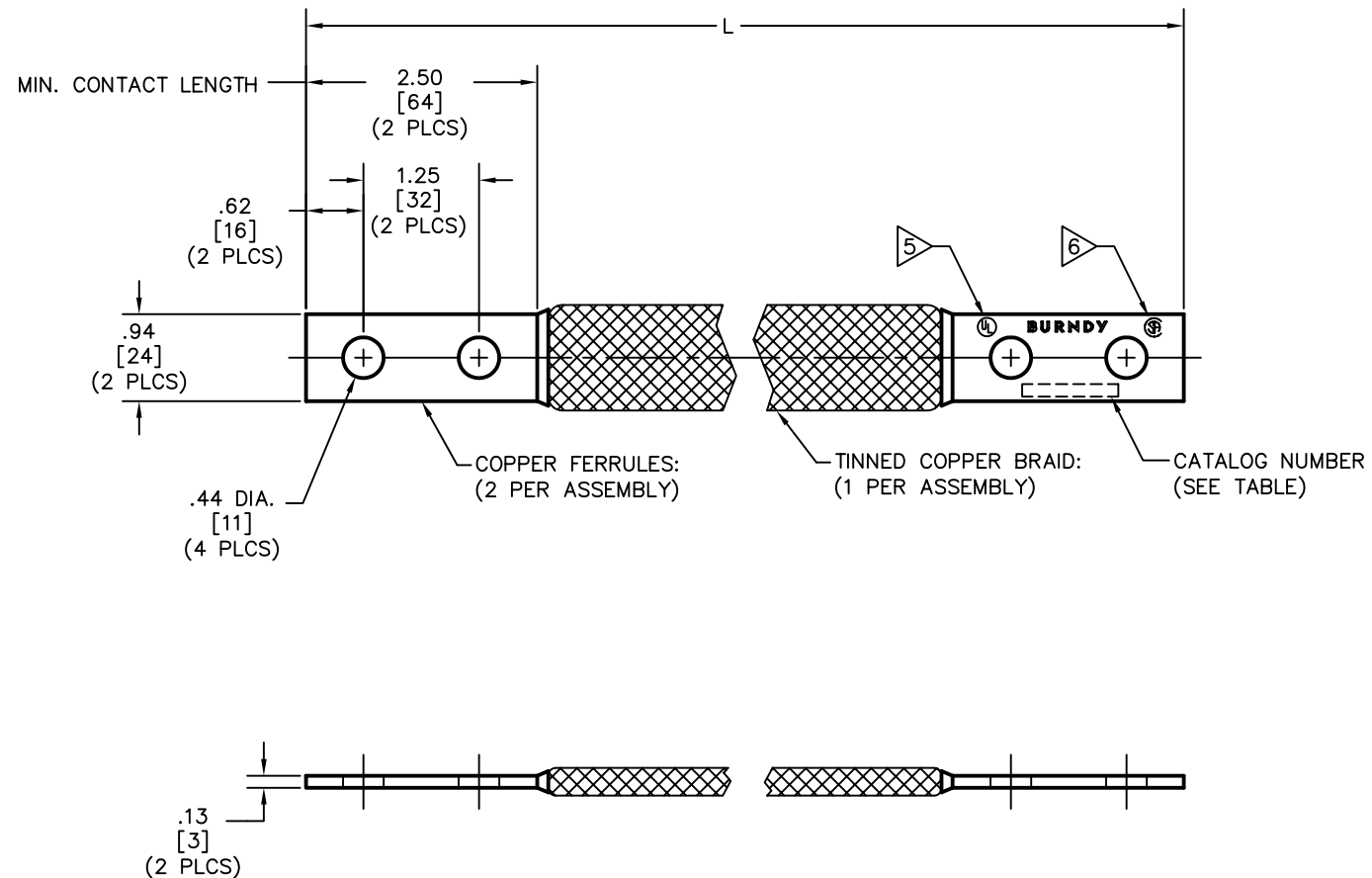


REV.	DATE	DESCRIPTION	ECO	BY	C'K'D.
B	12/10/07	ADDED FLAG AND TEXT NOTES 5 & 6	15258	PL	DB

CATALOG NUMBER	ITEM NUMBER	L
BD6	10030769	6.00 [152]
BD7	332106	7.00 [178]
BD8	332055	8.00 [203]
BD9	25014541	9.00 [229]
BD9D50	33208V	9.50 [241]
BD10	332125	10.00 [254]
BD11	10044899	11.00 [279]
BD11D50	S04000	11.50 [292]
BD12	332145	12.00 [305]
BD13	33284N	13.00 [330]
BD13D50	10044900	13.50 [343]
BD14	3320UT	14.00 [356]
BD15	3320KH	15.00 [381]
BD16	33264J	16.00 [406]
BD17	10044901	17.00 [432]
BD17D50	10044902	17.50 [445]
BD18	332160	18.00 [457]
BD18D48	S04038	18.48 [469]
BD19	10044903	19.00 [483]
BD20	33264D	20.00 [508]
BD21	10044904	21.00 [533]
BD22	10044905	22.00 [559]
BD23	10044906	23.00 [584]
BD24	332175	24.00 [610]
BD26	3320TN	26.00 [660]
BD27	10044907	27.00 [686]
BD28	10044908	28.00 [711]
BD28D50	10044909	28.50 [733]
BD29	10044910	29.00 [737]
BD30	33279V	30.00 [762]
BD31	S03727	31.00 [787]
BD32	10044911	32.00 [813]
BD34	33211N	34.00 [864]
BD36	33296L	36.00 [914]
BD40	10044912	40.00 [1016]

CATALOG NUMBER	ITEM NUMBER	L
BD42	3320FT	42.00 [1067]
BD47	332094	47.00 [1194]
BD48	33296Q	48.00 [1219]
BD52	33212V	52.00 [1321]
BD54	332121	54.00 [1372]
BD58	33212W	58.00 [1473]
BD60	3321AC	60.00 [1524]
BD64	33212L	64.00 [1626]
BD65	332120	65.00 [1651]
BD66	25014793	66.00 [1676]
BD67	33214J	67.00 [1702]
BD72	3321CX	72.00 [1829]
BD80	002115	80.00 [2032]
BD84	10044913	84.00 [2134]
BD88	332831	88.00 [2235]
BD90	33285H	90.00 [2286]
BD96	332169	96.00 [2438]
BD101	001475	101.00 [2565]
BD120	3320UB	120.00 [3048]
BD141D75	10044914	141.75 [3600]
BD144	10044915	144.00 [3658]
BD149	10044988	149.00 [3785]
BD150	10044916	150.00 [3810]
BD161	10044989	161.00 [4089]
BD173	10044990	173.00 [4394]
BD180	10044917	180.00 [4572]
BD216	10044918	216.00 [5486]
BD240	10044919	240.00 [6096]
BD300	10044920	300.00 [7620]
BD360	10044921	360.00 [9144]
BD504	10044922	504.00 [12801]
BD512	10044923	512.00 [13005]
BD600	10044924	600.00 [15240]
BD1800	10044925	1800.00 [45720]



NOTES:

- APPROXIMATE AMP RATING: 190 INDOOR, 225 OUTDOOR. THIS RATING MAY VARY WITH AMBIENT CONDITIONS, ORIENTATION OF THE BRAID AND OTHER SERVICE CONDITIONS.
 - DIMENSIONS IN BRACKETS [] ARE IN MILLIMETERS ROUNDED OFF TO THE NEAREST MILLIMETER, UNLESS OTHERWISE NOTED, AND ARE FOR REFERENCE ONLY.
- 3 CAN BE ORDERED WITH PLATED FERRULES BY ADDING A SUFFIX AS SHOWN BELOW:
 "NK" - FOR NICKEL PLATING
 "SV" - FOR SILVER PLATING
 "TN" - FOR TIN PLATING
 "W" - FOR HOT TIN DIPPED
- 4 CAN BE ORDERED WITH UNDRILLED FERRULES BY ADDING SUFFIX "U".
- 5 "UL" SYMBOL PER INTERNAL SPEC. L4219, LOCATION AND SIZE TO BE DETERMINED BY MANUFACTURING.
- 6 "CSA" SYMBOL PER INTERNAL SPEC. L4591, LOCATION AND SIZE TO BE DETERMINED BY MANUFACTURING.

TO ORDER BURNDY® PRODUCTS CALL 1-800-346-4175
 MANCHESTER, NH 03109, USA
 FOR PRODUCT INFO = <http://www.fciconnect.com>

BRAID

ITEM NO: N/A

CAT NO: BD-- (TABLE)

SCALE: 1/1

DRAWN BY: P LAPONIUS 9/16/04

CHECKER: J MICHAUD 9/24/04

DSN APPVL: J MICHAUD 9/22/04

MFG APPVL: -- --

QC APPVL: J BRODEUR 9/24/04

MKT APPVL: R BROOKS 9/22/04

PROD FAM: --

PROJECT #: --

DOCUMENT TYPE: Sales

REL LEVEL: AutoCAD

FCI BURNDY
PRODUCTS

DRAWING NO

10044985

SHEET 1 OF 1

REV
B