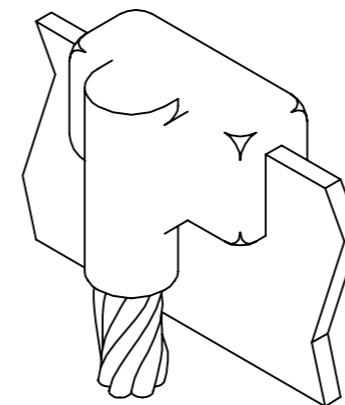


DRAWING NO.
10051642

REV.	DATE	DESCRIPTION	ECO	BY	C'K'D.
B	8/2/2013	LOGO CHANGE	32732	VS	MB

BURNDY MOLD CAT. NO.	BURNDY ITEM NUMBER	BUS BAR SIZE	CABLE SIZE	WELD METAL	HANDLE CLAMPS
B-779*	10049521	1/4" X 3"	1/0	115	B-106
B-780*	10049522	1/4" X 3"	2/0	115	B-106
B-781*	10049523	1/4" X 3"	4/0	150	B-106
B-782*	10049524	1/4" X 3"	250 kcmil	150	B-106
B-783*	10049525	1/4" X 3"	300 kcmil	200	B-106
B-784*	10049526	1/4" X 3"	350 kcmil	200	B-106
B-786*	10049527	1/4" X 3"	500 kcmil	250	B-106
B-787*	10049528	1/4" X 3"	750 kcmil	2-200	B-107
B-788*	10049529	1/4" X 3"	1000 kcmil	500	B-107
B-789*	10049530	3/8" X 2"	1/0	115	B-106
B-790*	10049531	3/8" X 2"	2/0	115	B-106
B-791*	10049532	3/8" X 2"	4/0	150	B-106
B-792*	10049533	3/8" X 2"	250 kcmil	150	B-106
B-793*	10049534	3/8" X 2"	300 kcmil	200	B-106
B-794*	10049535	3/8" X 2"	350 kcmil	200	B-106
B-796*	10049536	3/8" X 2"	500 kcmil	250	B-106
B-797*	10049537	3/8" X 2"	750 kcmil	2-200	B-107
B-798*	10049538	3/8" X 2"	1000 kcmil	500	B-107
B-799*	10049539	3/8" X 2" & WIDER	1/0	115	B-106
B-800*	10049540	3/8" X 2" & WIDER	2/0	115	B-106
B-801*	10049541	3/8" X 2" & WIDER	4/0	150	B-106
B-802*	10049542	3/8" X 2" & WIDER	250 kcmil	150	B-106
B-803*	10049543	3/8" X 2" & WIDER	300 kcmil	200	B-106
B-804*	10049544	3/8" X 2" & WIDER	350 kcmil	200	B-107
B-806*	10049545	3/8" X 2" & WIDER	500 kcmil	250	B-106
B-807*	10049546	3/8" X 2" & WIDER	750 kcmil	2-200	B-107
B-808*	10049547	3/8" X 2" & WIDER	1000 kcmil	500	B-107
B-809*	10049548	1/2" X 2"	1/0	150	B-106
B-810*	10049549	1/2" X 2"	2/0	150	B-106
B-811*	10049550	1/2" X 2"	4/0	200	B-106
B-812*	10049551	1/2" X 2"	250 kcmil	200	B-106
B-813*	10049552	1/2" X 2"	300 kcmil	250	B-106
B-814*	10049553	1/2" X 2"	350 kcmil	250	B-106
B-816*	10049554	1/2" X 2"	500 kcmil	2-150	B-106
B-817*	10049555	1/2" X 2"	750 kcmil	500	B-107
B-818*	10049556	1/2" X 2"	1000 kcmil	3-200	B-107
B-819*	10049557	1/2" X 3" & WIDER	1/0	150	B-106
B-820*	10049558	1/2" X 3" & WIDER	2/0	150	B-106
B-821*	10049559	1/2" X 3" & WIDER	4/0	200	B-106
B-822*	10049560	1/2" X 3" & WIDER	250 kcmil	200	B-106
B-823*	10049561	1/2" X 3" & WIDER	300 kcmil	250	B-106
B-824*	10049562	1/2" X 3" & WIDER	350 kcmil	250	B-106
B-826*	10049563	1/2" X 3" & WIDER	500 kcmil	2-150	B-107
B-827*	10049564	1/2" X 3" & WIDER	750 kcmil	500	B-107
B-828*	10049565	1/2" X 3" & WIDER	1000 kcmil	3-200	B-107



NOTES:

1. TYPE BCB-7 MOLDS ARE USED TO CONNECT A VERTICAL CABLE TAP TO A HORIZONTAL COPPER BUS BAR ON ITS EDGE AND WHERE THERE SPACE RESTRICTIONS SUCH AS ANOTHER SURFACE 3/4" TO 5" FROM THE BUS BAR.
2. SIZE RANGE IS 1/0 THROUGH 1000 kcmil SOLID OR CONCENTRIC STRANDED COPPER CONDUCTORS. BUS SIZE RANGE IS FROM 1/8" X 1" THROUGH 1/2" X 3" AND WIDER.
3. MOLDS LISTED ARE FOR CONCENTRIC STRANDED CABLE. ADD SUFFIX "-S" TO MOLD NUMBER FOR SOLID CONDUCTORS.
4. FOR HEAVY DUTY MOLDS, ADD SUFFIX "H" TO THE MOLD NUMBER.
5. REQUIRED TOOLS:
HANDLE CLAMPS (SEE TABLE FOR CORRECT HANDLES). FOR HANDLES SEE DRAWING 10051615.
*SOLD COMPLETE WITH FRAME
B38-0309-00: FLINT IGNITOR (INCLUDED) DRAWING 10051616.

6. OTHER RECOMMENDED ACCESSORIES: DRAWING 10051616
B38-3922-00: MOLD CLEANING BRUSH
B38-0135-00: CABLE CLEANING BRUSH

TO ORDER BURNDY® PRODUCTS CALL UNITED STATES: 1-800-346-4175 (LONDONDERRY, NH) CANADA: 1-800-361-6975 (QUEBEC) 1-800-387-6487 (ALL OTHER PROVINCES) FOR PRODUCT INFO: http://www.burndy.com		BURNDYWeld™ VERTICAL DROP TAP TO HORIZONTAL BUS ITEM NO: N/A CAT NO: BCB-7 SERIES SCALE: N/A DRAWN BY: D. BOISVERT 12/23/04 CHECKER: D. SHIBILIA 1/3/05 DSN APPVL: D. SHIBILIA 1/13/05 MFG APPVL: --- QC APPVL: J. BRODEUR 1/14/05 MKT APPVL: R. ROBICHEAU 1/18/05 DRAWING NO: 10051642 REV: B PROJECT #: --- DOCUMENT TYPE: Sales REL LEVEL: AutoCAD	
---	--	---	--



DRAWING NO	REV
10051642	B
SHEET 2 OF 2	