

CATALOG NO.	CONDUCTOR		BOLT SIZE	FIG. NO.	DIMENSIONS									INSTALLATION TOOLING (# CRIMPS)																			
	FLEX	CODE (AWG)			B	C	H	K DIA.	L	N	O.D.	T	Z	DIE INDEX	COLOR CODE	MECHANICAL			HYDRAULIC			DIELESS (# CRIMPS)	WIRE STRIP LENGTH										
																MD7-34R	OUR840	Y2MR	BCT500 Y500CT PAT600	Y750 Y35, Y39 BAT750, PAT750	Y46 PAT46			Y45									
YAV2C-TC14-FX	#2 WELD 125/24 150/24	#2 AWG	1.38 [35]	.68 [17]	---	.27 [7]	2.39 [61]	.31 [8]	.46 [12]	.10 [3]	.32 [8]	10	BROWN	7	7	BROWN (4)	7	7	7	MECHANICAL: MY29-11 (1) HYDRAULIC: Y644, Y644M Y644MBH, PAT644M (1)	1-7/16												
YAV2C-TC14-FX-45														7	7	7	7	7	7			7	7										
YAV2C-TC14-FX-90														7	7	7	7	7	7			7	7	7									
YAV2C-TC38-FX														3/8 [M10]	1.91 [49]	2.58 [66]	.41 [10]	.41 [10]	.46 [12]			.10 [3]	.42 [11]	10	BROWN	7	7	BROWN (4)	7	7	7		
YAV2C-TC38-FX-45																										7	7	7	7	7	7	7	7
YAV2C-TC38-FX-90																										7	7	7	7	7	7	7	7
YAV2C-TC58-FX	#2 WELD 125/24 150/24	#2 AWG	1.38 [35]	.68 [17]	---	.69 [18]	3.14 [80]	.66 [17]	.46 [12]	.14 [4]	.67 [17]	10	BROWN	7	7	BROWN (4)	7	7	7	1-7/16													

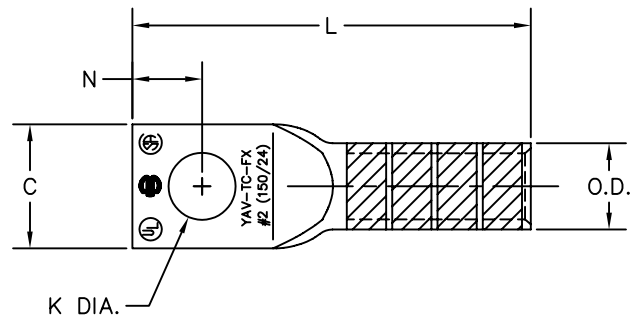


FIG. 1

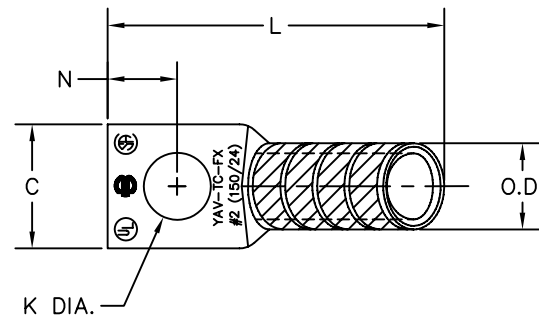


FIG. 2

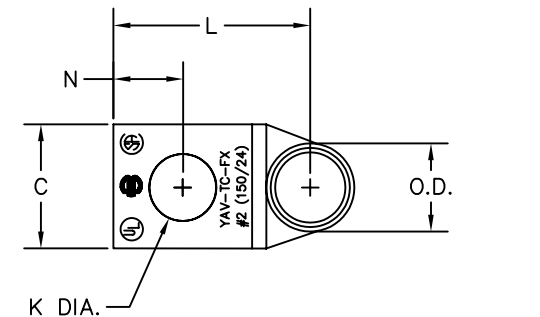
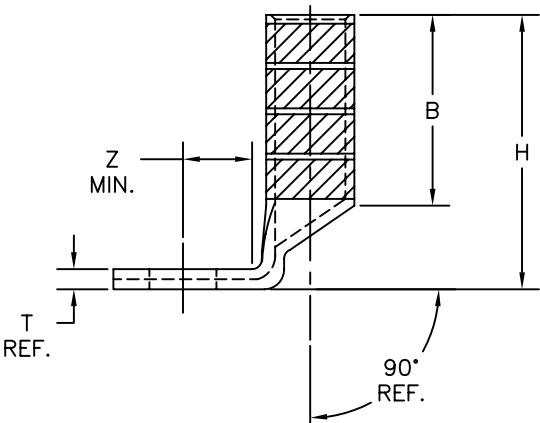
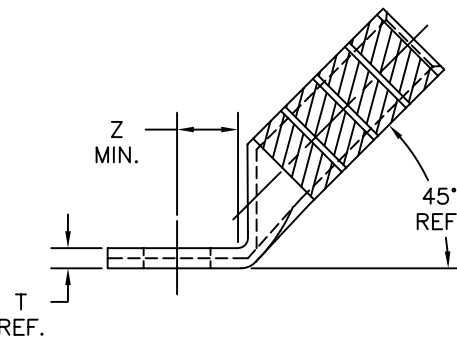
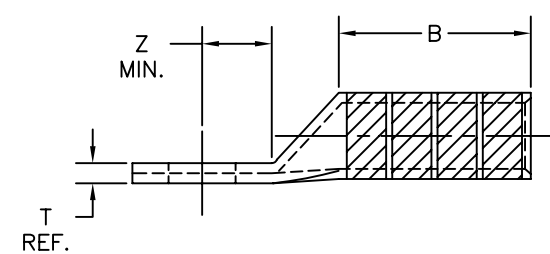


FIG. 3



NOTES:

- MATERIAL: COPPER TUBING.
- FINISH: TIN PLATED
- CATALOG # PT6515 ADAPTOR IS REQUIRED TO USE "U" DIES IN Y45 SERIES TOOLS.
- CATALOG # PUADP-1 ADAPTOR IS REQUIRED TO USE "U" DIES IN Y46 SERIES TOOLS.
- PERMANENT DIE IN TOOLING.
- DIMENSIONS IN BRACKETS [] ARE IN MILLIMETERS ROUNDED OFF TO THE NEAREST MILLIMETER, UNLESS OTHERWISE NOTED, AND ARE FOR REFERENCE ONLY.
- CRIMP (# OF CRIMPS PER TABLE) WITHIN THE LENGTH BETWEEN THE INK STAMPED CRIMPING AREA.

NOT FOR PRODUCTION USE

TO ORDER BURNDY® PRODUCTS CALL
UNITED STATES:
1-800-346-4175 (LONDONDERRY, NH)
CANADA:
1-800-361-6975 (QUEBEC)
1-800-387-6487 (ALL OTHER PROVINCES)
FOR PRODUCT INFO: <http://www.burndy.com>

HYLUG™	
ITEM NO: ---	
CAT NO: YAV2C-TC----FX (SEE TABLE)	
SCALE: 2/1	
DRAWN BY: P. LAPONIUS 08/02/06	
CHECKER: R. BOISVERT 06/02/06	
DSN APPVL: J. MICHAUD 06/02/06	
MFG APPVL: ---	
QC APPVL: J. BRODEUR 06/02/06	
MKT APPVL: J. SYLVIA 06/02/06	
PROD FAM: ---	
PROJECT #: ---	
DOCUMENT TYPE: Sales	
REL LEVEL: AutoCAD	
DRAWING NO	REV
10069636	B
SHEET 1 OF 1	

REV.	DATE	DESCRIPTION	ECO	BY	C*K'D.
B	12/04/08	ADD CAT. NO. YAV2C-TC58-FX TO TABLE	17142	RB	JM