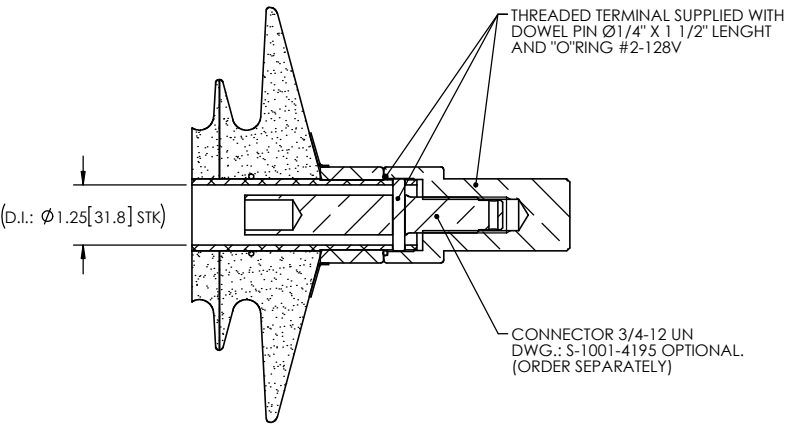
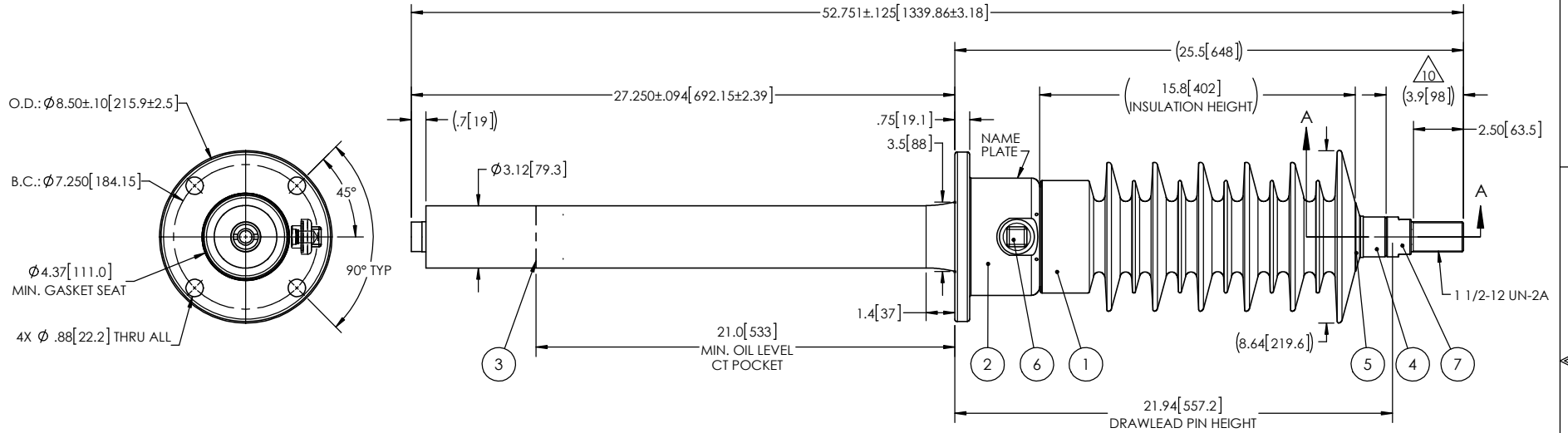


NOTES:

- 1 CREEPAGE DISTANCE: 44.6" / 1133.3mm
- 2 ARC DISTANCE: 18.0" / 458.0mm
- 3 NOMINAL VOLTAGE: 25kV
- 4 NOMINAL CURRENT: 700A
- 5 VOLTAGE WITHSTAND, 60 sec.: 60kV
- 6 BIL: 150kV
- 7 ROUTINE TEST ACCORDING TO: IEEE C57.19.01
- 8 MAX. TORQUE APPLIED ON FLANGE BOLTS: 40 lbf · ft / 54.2 N · m
- 9 WEIGHT: 46 lb / 20.9 kg
- 10 SILVER PLATED, AS PER ASTM B700, TYPE 1, GRADE D, CLASS N, NO NICKEL LAYER, FROM 13 TO 20 MICROMETERS THICKNESS

REVISIONS					
ZONE	REV.	DESCRIPTION	DRAWN BY	DATE	APPR.



SECTION A-A  
SCALE 1 : 4

ITEM NO.	QTY	DRAWING NO.	PART NO.	DESCRIPTION	NOTE / MAT'L
7	1	S-7496-7233-1		THREADED TERMINAL KIT	COPPER
6	1	S-1001-2022		CAPACITANCE TAP ASSEMBLY	ALUMINUM
5	1	S-1344-0162-1		CAP	ALUMINUM
4	1	S-3936-9650		TUBE ASSEMBLY	ALUMINUM
3	1	S-3936-9649		SHIELD ASSEMBLY	COPPER
2	1	S-6303-5953		FLANGE	ALUMINUM
1	1	S-3936-9648	-001	CASTING, CYCLOALIPHATIC RESIN	EC-APG-02

PARTS LIST

GENERAL TOLERANCES  
(UNLESS OTHERWISE SPECIFIED)

X.	±0.125
.X	±0.094
.XX	±0.063
.XXX	±0.031
ANGLES	±0.25°
RADIUS	±0.031

REMOVE BURRS AND  
BREAK SHARP EDGES

DIMENSIONS ARE IN  
INCHES  
(UNLESS OTHERWISE SPECIFIED)

**Electro Composites**  
solid HV bushings solution

TITLE: SDC® BUSHING 25kV, 700A  
MODEL: 150-007-T-1007-02

DRAWN BY: M. FORGET	DATE: 2018/03/23	FORMAT: A	CAGE CODE: S-3936-9648	DRAWING NO.:	REVISION: NR
CHECK BY:	PROJECT ENG.:	PROJECT MANAGER:	SCALE: 1:8	GENERATED BY: SolidWorks 2013	SHEET: 1 of 1

This drawing is the proprietary property of Electro Composites (2008) ULC, not part of the public domain, and is issued with the express understanding and agreement that it is not to be reproduced or copied in whole or in part or issued for furnishing information to others, or used directly or indirectly, in any way detrimental to the interest of Electro Composites (2008) ULC and is to be returned upon request by Electro Composites (2008) ULC. All Rights Reserved.