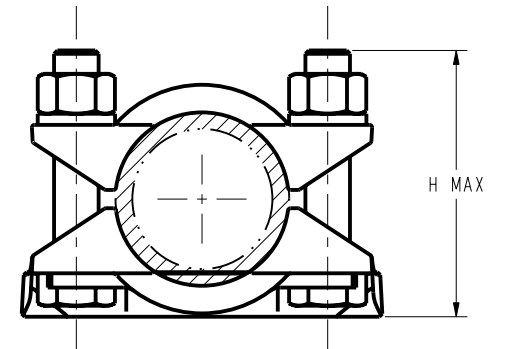
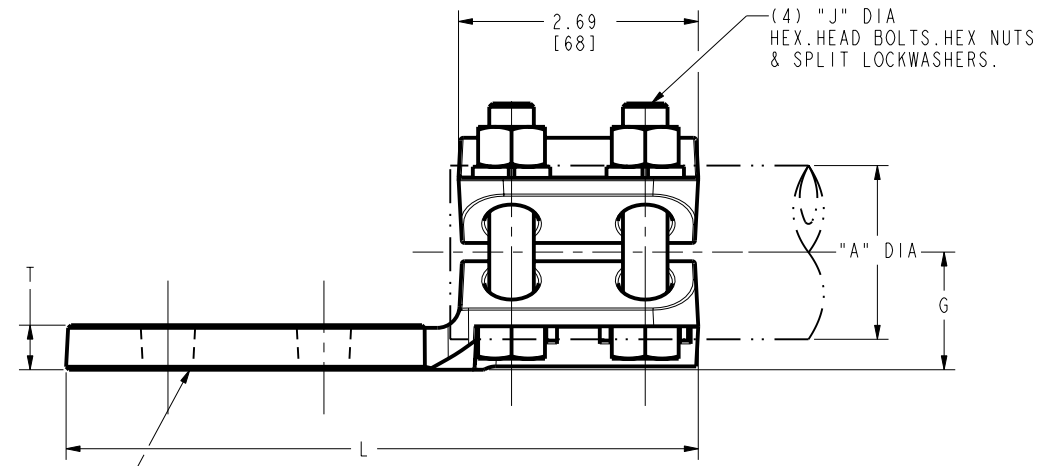
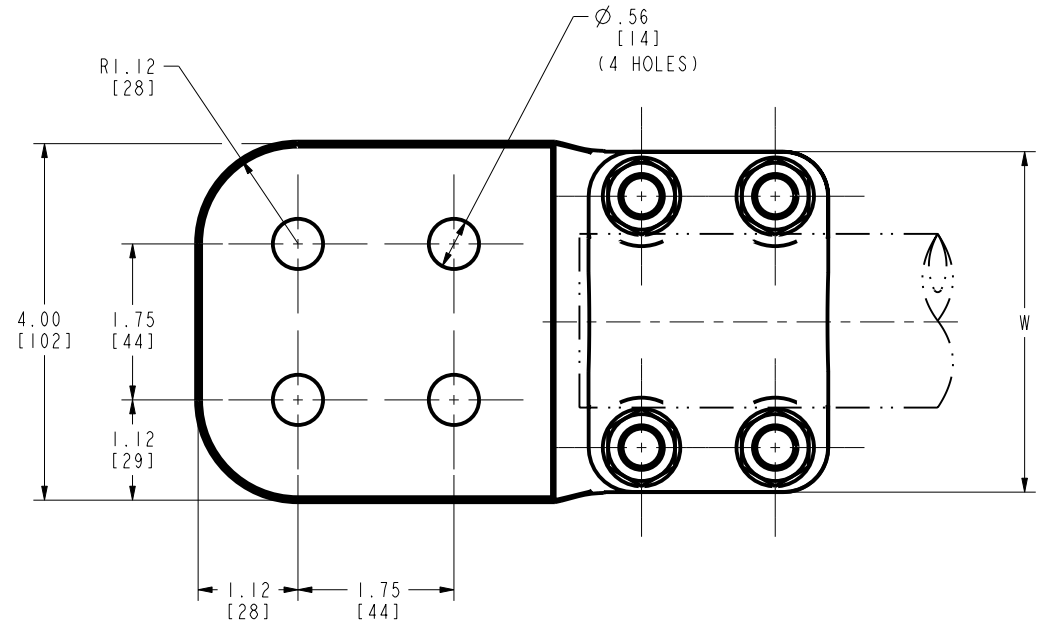


DRAWING NO.
10079263

PRINCIPAL RUN	NUMÉRO DE CATALOGUE CATALOG NUMBER	G	H	J	MATERIEL BOULONERIES HARDWARE MATERIAL	COUPLE D'INSTALLATION RECOMMENDED TORQUE		L	T	W
						LB-PO LB-IN	Nm			
1.50 IPS 1.945 [49]	NA1744NHO	1.32 [34]	3.09 [79]	1/2-13 X 2.50 [13 X 64]	BRONZE SILICIUM SILICON BRONZE	480	54	7.07 [179]	0.5 [13]	3.82 [97]
2.50 IPS 2.934 [75]	NA1944NHO	1.88 [48]	3.96 [101]	1/2-13 X 2.50 [13 X 64]				7.09 [180]	0.75 [19]	5.12 [130]

REV	DATE	DESCRIPTION	ECO	BY	C'H'K.
D	12/23/2009 2:11:00 AM	CHANGED BOLTS PER MOUNTING BOLTS AND NUTS	19936	NJS	RL



RACCORD CU TUBE À PLAGE

NOTES:

- MATERIAL:
BODY & CAP: CAST COPPER ALLOY
- DIMENSIONS IN BRACKETS [] DENOTES METRIC UNITS [SI UNITS] AND ARE ROUNDED TO THE NEAREST WHOLE NUMBER. UNLESS OTHERWISE SPECIFIED THESE UNITS SHALL BE USED FOR REFERENCE ONLY.
- HEX BOLTS CAPTURED TO PREVENT TURNING DURING INSTALLATION.
- CHANGES TO THIS DRAWING SHALL FOLLOW THE PROCESS DOCUMENTED IN "THE FCI" QUALITY ASSURANCE PROCEDURE Q4.3 PARAGRAPH 6.4 "CUSTOMER NOTIFICATION OF AN ENGINEERING CHANGE".

NOTES:

- MATÉRIEL:
CORPS ET BRIDE: ALLIAGE DE CUIVRE COULÉ.
- LES DIMENSIONS ENTRE CROCHETS [] INDICENT LES UNITÉS MÉTRIQUES ET SONT ARRONDIES LE PLUS PRÈS DU NOMBRE EXACT. À MOINS D'AVIS CONTRAIRE, CES UNITÉS SONT UTILISÉES POUR RÉFÉRENCE SEULEMENT.
- LA CAVITÉ HEXAGONALE EMPÊCHE LES BOULONS DE TOURNER DURANT L'INSTALLATION.
- LES CHANGEMENTS EFFECTUES SUR CE DESSIN SUIVENT LES PROCESSUS QUI SONT DOCUMENTÉS DANS LA PROCEDURE D'ASSURANCE QUALITE DE FCI PROCÉDURE NO.04.3, PARAGRAPHE 6.4 "AVIS AU CLIENT D'UN CHANGEMENT TECHNIQUE".

SURFACE FINIE
FINISHED SURFACE

TO ORDER BURNDY® PRODUCTS CALL
UNITED STATES
1-800-346-4175 (LONDONDERRY, NH)
CANADA:
1-800-361-6975 (QUEBEC)
1-800-387-6487 (ALL OTHER PROVINCES)
FOR PRODUCT INFO: <http://www.burndy.com>

COPPER TERMINAL	
ITEM NO:	--
CAT. NO:	SEE TABLE
DRAWN BY:	NJ SUDHAKAR 06/12/07
CHECKER:	R LAVOIE 12/23/09
DSN APPVL:	R LAVOIE 12/23/09
MFG APPVL:	G KELLY 12/23/09
QA APPVL:	J HILLMAN 01/07/09
MKT APPVL:	S MOIST 12/23/09
PROD FAM:	SUBSTATION
PROJECT #:	--
DOCUMENT TYPE:	Sales
REL LEVEL:	Released
DRAWING NO	10079263
REV	D
SCALE:	1:1
SHEET 1 OF 1	

REV: PE0200