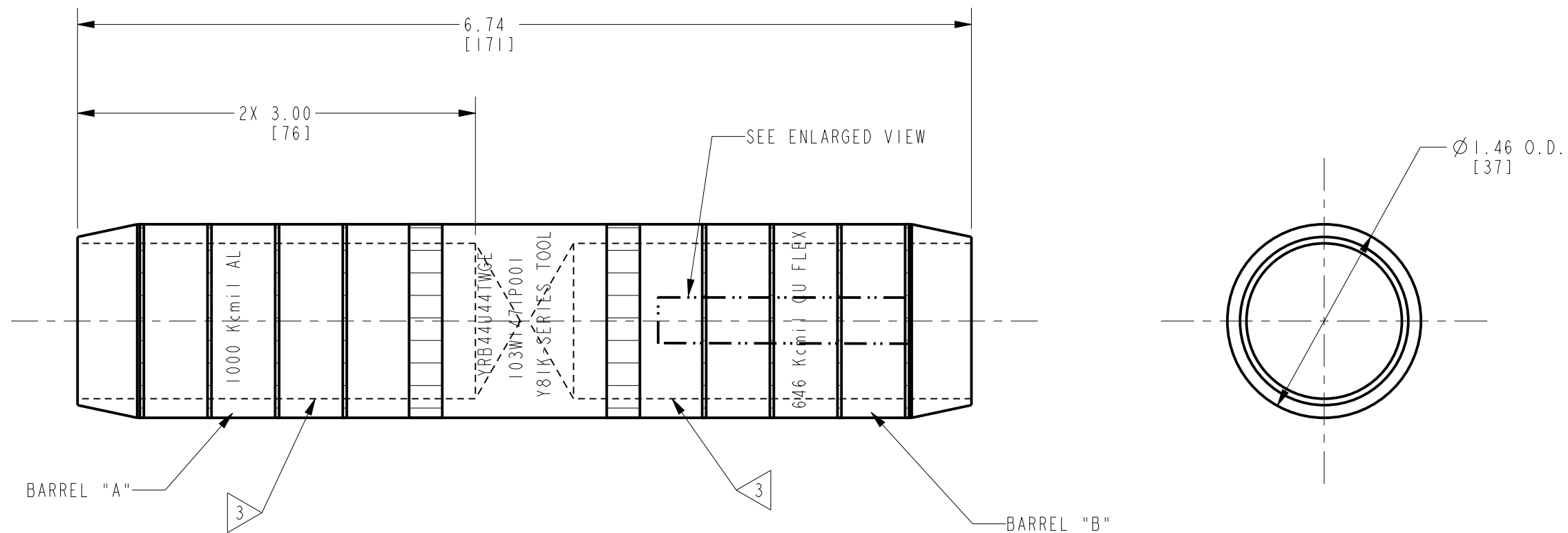


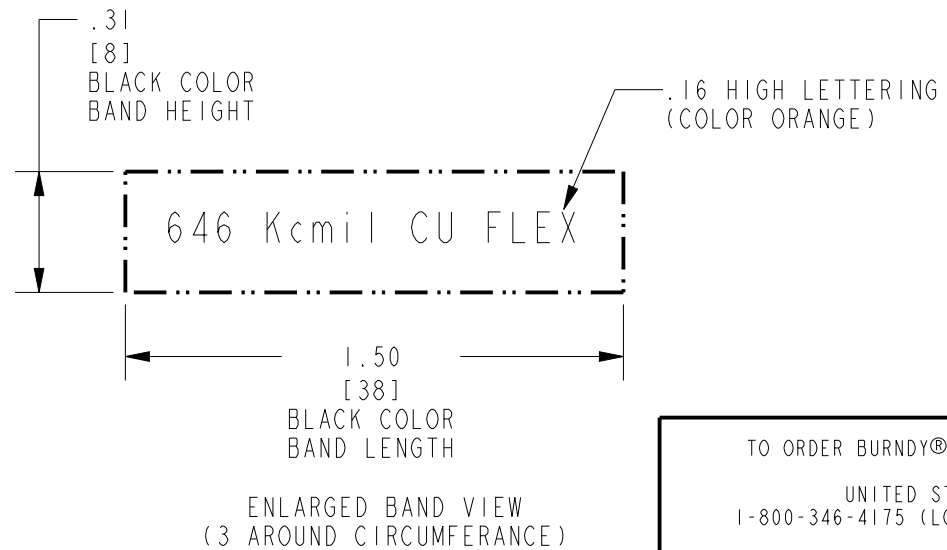
CONDUCTORS ACCOMMODATED

BARREL "A" ALUMINUM 8,000 SERIES CONDUCTORS			BARREL "B" COPPER CONDUCTORS
CONCENTRIC	COMPRESSED	COMPACT	
1,000-61 STR, CLASS A&B (1.152 DIA.)	1,000-61 STR, CLASS A&B (1.117 DIA.)	1,000-61 STR, CLASS A&B (1.060 DIA.)	646.4 (1600/24) DLO (1.060 DIA.)
1,000-91 STR, CLASS C (1.153 DIA.)	1,000-91 STR, CLASS C (1.118 DIA.)	1,000-91 STR, CLASS C (1.060 DIA.)	
1,000-127 STR, CLASS D (1.153 DIA.)	1,000-127 STR, CLASS D (1.119 DIA.)	1,000-127 STR, CLASS D (1.060 DIA.)	

REV.	DATE	DESCRIPTION	ECO	BY	C.H.K.
B	05/05/2017 00:00:00 AM	LOGO UPDATED	46675	CV	MB



- NOTES:
- MATERIAL: ALUMINUM
 - FINISH: TIN PLATED
 - BARRELS ARE PARTIALLY FILLED WITH PENETROX™ A13 AND SEALED.
 - SCRATCH BRUSHING OF ALL ALUMINUM CONDUCTORS BEFORE MAKING INSTALLATION IS RECOMMENDED.
 - NOT FOR USE WITH COPPER TO COPPER APPLICATIONS.
 - DIMENSIONS IN BRACKETS [] ARE MILLIMETERS ROUNDED OFF TO THE NEAREST MILLIMETER UNLESS OTHERWISE SPECIFIED, AND ARE FOR REFERENCE ONLY.
 - CRIMP WITH Y81K-SERIES 4 POINT TOOL (4 CRIMPS PER END).
 - WIRE STRIP LENGTH = 3-1/16".
 - OPTIONAL: Y750-/PAT750 - PLATFORM TOOLS USING U39ART-2 DIE SET.



TO ORDER BURNDY® PRODUCTS CALL
 UNITED STATES:
 1-800-346-4175 (LONDONDERRY, NH)
 CANADA:
 1-800-361-6975 (QUEBEC)
 1-800-387-6487 (ALL OTHER PROVINCES)
 FOR PRODUCT INFO: <http://www.burndy.com>

HYREDUCER™	
ITEM NO:	10082048
CAT. NO:	YRB44U44TWGE
DRAWN BY:	R. BOISVERT 06/23/08
CHECKER:	J. MICHAUD 06/24/08
DSN APPVL:	J. MICHAUD 05/21/08
MFG APPVL:	M. SMITH 05/21/08
QA APPVL:	J. BRODEUR 05/21/08
MKT APPVL:	J. SYLVIA 05/20/08
PROD FAM:	--
PROJECT #:	--
DOCUMENT TYPE:	Sales
REL LEVEL:	Released
SCALE:	1:1
DRAWING NO	10082899
REV	B
SHEET 1 OF 1	

REV: PE0200