

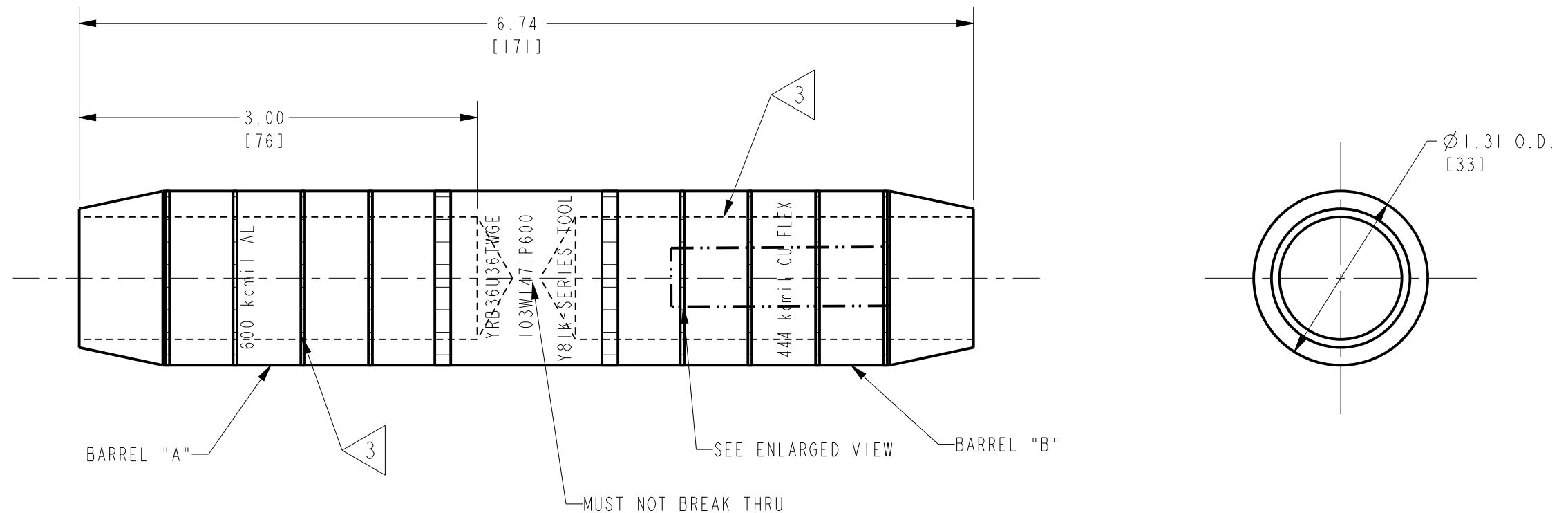
CONDUCTORS ACCOMMODATED

REV.	DATE	DESCRIPTION	ECO	BY	C'H'K.
B	05/05/2017 00:00:00 AM	LOGO UPDATED	46675	CV	MB

BARREL "A" ALUMINUM 8,000 SERIES CONDUCTORS

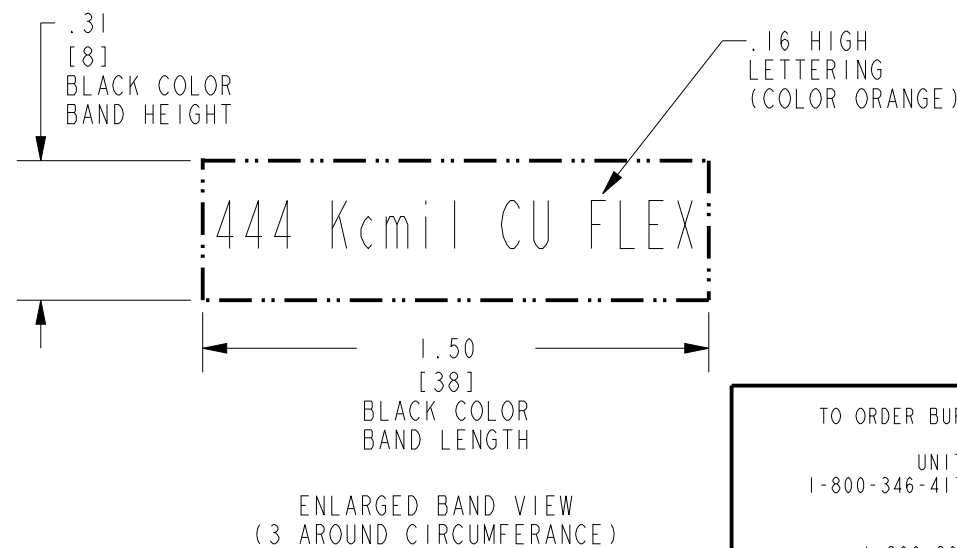
BARREL "B" COPPER CONDUCTORS

CONCENTRIC	COMPRESSED	COMPACT	444.4 (1100/24) DLO (.870 DIA.)
600-37 STR, CLASS A (.891 DIA.)	600-37 STR, CLASS A (.864 DIA.)	600-37 STR, CLASS A (.813 DIA.)	
600-61 STR, CLASS B (.893 DIA.)	600-61 STR, CLASS B (.866 DIA.)	600-61 STR, CLASS B (.813 DIA.)	
600-91 STR, CLASS C (.893 DIA.)	600-91 STR, CLASS C (.866 DIA.)	600-91 STR, CLASS C (.813 DIA.)	
600-127 STR, CLASS D (.893 DIA.)	600-127 STR, CLASS D (.866 DIA.)	600-127 STR, CLASS D (.813 DIA.)	



NOTES:

1. MATERIAL: ALUMINUM
2. FINISH: TIN PLATED
3. BARRELS ARE PARTIALLY FILLED WITH PENETROX™ A13 AND SEALED.
4. SCRATCH BRUSHING OF ALL ALUMINUM CONDUCTORS BEFORE MAKING INSTALLATION IS RECOMMENDED.
5. NOT FOR USE WITH COPPER TO COPPER APPLICATIONS.
6. DIMENSIONS IN BRACKETS [] ARE IN MILLIMETERS ROUNDED OFF TO THE NEAREST MILLIMETER UNLESS OTHERWISE SPECIFIED, AND ARE FOR REFERENCE ONLY.
7. CRIMP WITH Y8IK-SERIES 4 POINT TOOL (4 CRIMPS PER END).
8. WIRE STRIP LENGTH = 3-1/16".
9. OPTIONAL: Y750-/PAT750 - PLATFORM TOOLS USING U34ART DIE SET.



TO ORDER BURNDY® PRODUCTS CALL
 UNITED STATES:
 1-800-346-4175 (LONDONDERRY, NH)
 CANADA:
 1-800-361-6975 (QUEBEC)
 1-800-387-6487 (ALL OTHER PROVINCES)
 FOR PRODUCT INFO: <http://www.burndy.com>

HYREDUCERT™		SCALE: 1:1
ITEM NO:	10082051	DRAWING NO
CAT. NO:	YRB36U36TWGE (GE#103WI47IP600)	REV
DRAWN BY:	R. BOISVERT 06/23/08	10082902
CHECKER:	J. MICHAUD 06/24/08	
DSN APPVL:	J. MICHAUD 05/21/08	B
MFG APPVL:	M. SMITH 05/21/08	
QA APPVL:	J. BRODEUR 05/21/08	SHEET 1 OF 1
MKT APPVL:	J. SYLVIA --	
PROJECT #:	--	
DOCUMENT TYPE:	Sales	
REL LEVEL:	Released	

REV: PE0200