

CATALOG NUMBER	FIG. NO.	NUMBER OF HOLES	BOLT SIZES WITH HOLE SIZES	DIMENSIONS				
				B	C	L	O.D.	T REF.
YA8C2NU	1	2	#10 (.197), #12 (.223), #14 (.250), 1/4 (.266), 5/16 (.328), 3/8 (.391), 7/16 (.453), 1/2 (.525), & NEMA (.562)	.81 [21]	.83 [21]	4.08 [104]	.27 [7]	.12 [3]
YA6C2NU	1	2	#10 (.197), #12 (.223), #14 (.250), 1/4 (.266), 5/16 (.328), 3/8 (.391), 7/16 (.453), 1/2 (.525), & NEMA (.562)	1.12 [28]		4.40 [112]	.29 [7]	.12 [3]
YA4C2NU	1	2	#10 (.197), #12 (.223), #14 (.250), 1/4 (.266), 5/16 (.328), 3/8 (.391), 7/16 (.453), 1/2 (.525), & NEMA (.562)	1.12 [28]		4.45 [113]	.34 [9]	.12 [3]
YA3C2NU	1	2	1/4 (.266), 5/16 (.328), 3/8 (.391), 7/16 (.453), 1/2 (.525) & NEMA (.562)	1.25 [32]		4.62 [117]	.38 [8]	.12 [3]
YA2C2NU	1	2	1/4 (.266), 5/16 (.328), 3/8 (.391), 7/16 (.453), 1/2 (.525) & NEMA (.562)	1.25 [32]		4.64 [118]	.42 [11]	.12 [3]
YA1C2NU	1	2	1/4 (.266), 5/16 (.328), 3/8 (.391), 7/16 (.453), 1/2 (.525) & NEMA (.562)	1.38 [35]		4.82 [122]	.46 [12]	.12 [3]
YA252NU	1	2	1/4 (.266), 5/16 (.328), 3/8 (.391), 7/16 (.453), 1/2 (.525) & NEMA (.562)	1.38 [35]		4.81 [122]	.51 [13]	.11 [3]
YA262NU	1	2	1/4 (.266), 5/16 (.328), 3/8 (.391), 7/16 (.453), 1/2 (.525) & NEMA (.562)	1.50 [38]	.83 [21]	4.97 [126]	.56 [14]	.12 [3]
YA272NU	1	2	1/4 (.266), 5/16 (.328), 3/8 (.391), 7/16 (.453), 1/2 (.525) & NEMA (.562)	1.50 [38]	.91 [23]	5.01 [127]	.62 [16]	.13 [3]
YA282NU	2	2	1/4 (.266), 5/16 (.328), 3/8 (.391), 7/16 (.453), 1/2 (.525) & NEMA (.562)	1.62 [41]	1.02 [26]	5.17 [131]	.69 [18]	.14 [4]
YA292NU	2	2	1/4 (.266), 5/16 (.328), 3/8 (.391), 7/16 (.453), 1/2 (.525) & NEMA (.562)	1.62 [41]	1.11 [28]	5.21 [132]	.75 [19]	.16 [4]
YA302NU	2	2	1/4 (.266), 5/16 (.328), 3/8 (.391), 7/16 (.453), 1/2 (.525) & NEMA (.562)	2.00 [51]	1.20 [30]	5.64 [143]	.81 [21]	.16 [4]
YA312NU	2	2	1/4 (.266), 5/16 (.328), 3/8 (.391), 7/16 (.453), 1/2 (.525) & NEMA (.562)	2.00 [51]	1.29 [33]	5.68 [144]	.88 [22]	.18 [5]
YA322NU	2	2	3/8 (.391), 7/16 (.453), 1/2 (.525) & NEMA (.562)	2.12 [54]	1.40 [36]	5.85 [149]	.95 [24]	.19 [5]
YA342NU	2	2	3/8 (.391), 7/16 (.453), 1/2 (.525) & NEMA (.562)	2.25 [57]	1.55 [39]	6.06 [154]	1.05 [27]	.22 [6]
YA362NU	2	2	3/8 (.391), 7/16 (.453), 1/2 (.525) & NEMA (.562)	2.69 [68]	1.73 [44]	6.59 [167]	1.18 [30]	.26 [7]
YA392NU	2	2	3/8 (.391), 7/16 (.453), 1/2 (.525) & NEMA (.562)	2.88 [73]	1.91 [49]	6.87 [174]	1.30 [33]	.26 [7]
YA402NU	2	2	3/8 (.391), 7/16 (.453), 1/2 (.525) & NEMA (.562)	2.94 [75]	1.98 [50]	6.95 [177]	1.35 [34]	.30 [8]
YA442NU	2	2	3/8 (.391), 7/16 (.453), 1/2 (.525) & NEMA (.562)	3.00 [76]	2.18 [55]	7.14 [181]	1.49 [38]	.32 [8]
YA452NU	2	2	3/8 (.391), 7/16 (.453), 1/2 (.525) & NEMA (.562)	3.19 [81]	2.46 [62]	7.44 [189]	1.69 [43]	.38 [10]
YA462NU	2	2	3/8 (.391), 7/16 (.453), 1/2 (.525) & NEMA (.562)	3.19 [81]	2.69 [68]	7.55 [192]	1.84 [47]	.40 [10]
YA472NU	2	2	3/8 (.391), 7/16 (.453), 1/2 (.525) & NEMA (.562)	3.44 [87]	2.90 [74]	7.89 [200]	1.98 [50]	.42 [11]
YA482NU	3	2 OR 4	3/8 (.391), 7/16 (.453), 1/2 (.525) & NEMA (.562)	3.44 [87]	3.10 [79]	7.98 [203]	2.13 [54]	.46 [12]
YA444NU	3	2 OR 4	3/8 (.391), 7/16 (.453), 1/2 (.525) & NEMA (.562)	3.00 [76]	3.00 [76]	7.14 [181]	1.49 [38]	.23 [6]
YA454NU	3	2 OR 4	3/8 (.391), 7/16 (.453), 1/2 (.525) & NEMA (.562)	3.19 [81]	3.00 [76]	7.44 [189]	1.69 [43]	.30 [8]
YA464NU	3	2 OR 4	3/8 (.391), 7/16 (.453), 1/2 (.525) & NEMA (.562)	3.19 [81]	3.00 [76]	7.55 [192]	1.84 [47]	.34 [9]

NOTES:

- MATERIAL: COPPER TUBING
- FINISH: TIN PLATED.
- DIMENSIONS IN BRACKETS [] ARE IN MILLIMETERS ROUNDED OFF TO THE NEAREST MILLIMETER, UNLESS OTHERWISE NOTED, AND ARE FOR REFERENCE ONLY.
- CONNECTORS ARE UL LISTED.
- CONNECTORS ARE CSA CERTIFIED.
- INSTALLATION INSTRUCTIONS:
 - SELECT APPROPRIATE SIZE TERMINAL.
 - SELECT APPROPRIATE DRILL BIT FOR HOLE CHOSEN (SEE TABLE).
 - MEASURE ALONG DRILL LINE FOR HOLE PLACEMENT.
 - DRILL HOLE OR HOLES (SEE TABLE) REMOVING ANY COPPER FILINGS OR BURRS.
 - FOR "NEMA" HOLES, DRILL .562 DIA. HOLES AT THE ENDS OF THE DRILL LINES. (SEE TABLE 1 & FIGURES FOR 2-HOLE OR 4-HOLE APPLICATIONS). FOR FIGURE 3 PADS, THERE MUST BE AN EQUAL NUMBER OF HOLES ON EACH SIDE OF THE CENTERLINE.
 - INSTALL WITH APPROPRIATE INDUSTRY HARDWARE AND RECOMMENDED TORQUE VALUES.

7. SEE SHEETS 2 THRU 4 FOR CONDUCTOR, AND INSTALLATION TOOLING INFORMATION.

8. ALL CONNECTORS ARE UL LISTED AND CSA CERTIFIED BEFORE BEING DRILLED. ALL CONNECTORS ARE UL LISTED AND CSA CERTIFIED AFTER BEING DRILLED TO THE APPROPRIATE SIZE AS SHOWN.

CONNECTOR SIZE	TOLERANCES			
	B	C	L	O.D.
-8C THRU -25	±.06	±.04	±.09	±.01
-26 THRU -34	±.08	+ .04 - .06	±.12	±.01
-35 AND UP	±.09	±.06	±.15	±.01

REV.	DATE	DESCRIPTION	ECO	BY	C'K'D.
D	6/08/2020	UPDATED AS PER MARKUP	53693	YR	SS

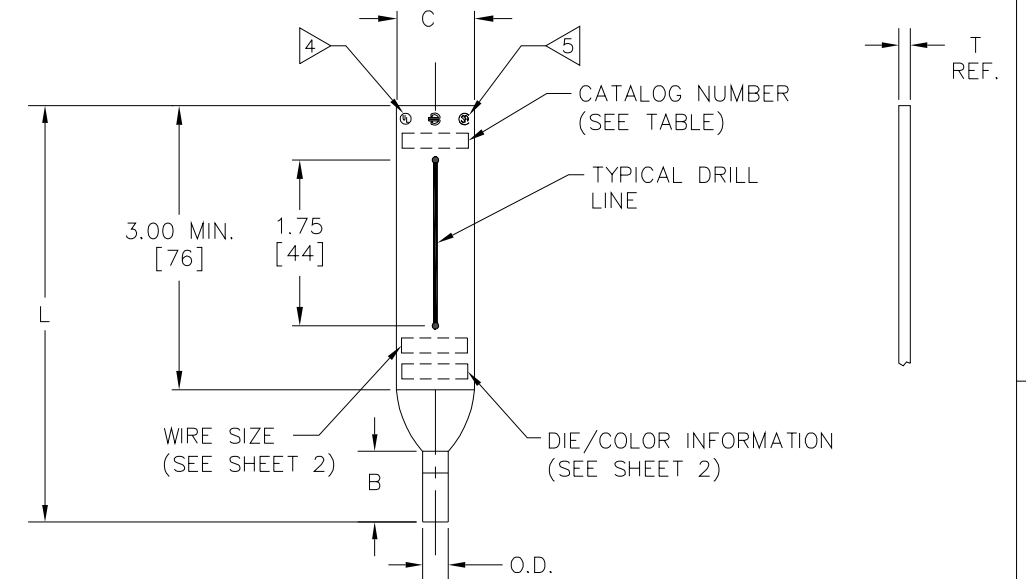


FIGURE 1

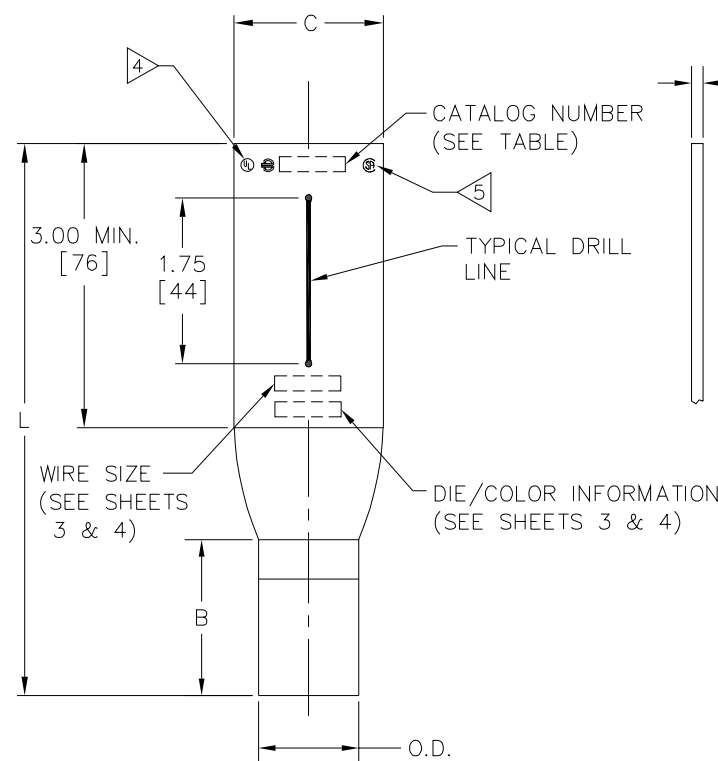


FIGURE 2

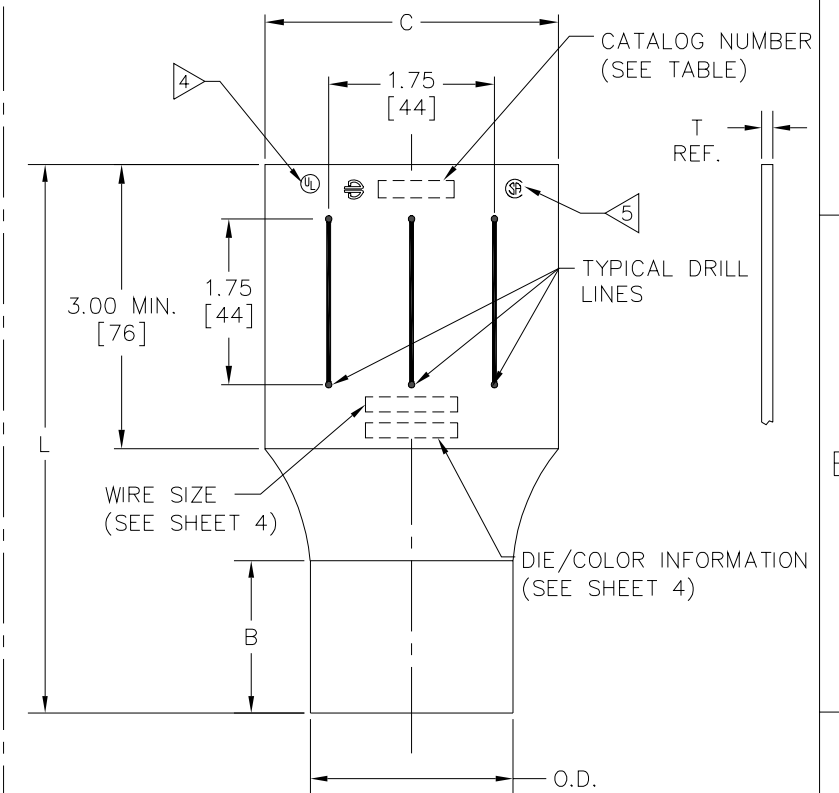


FIGURE 3

TO ORDER BURNDY® PRODUCTS CALL
UNITED STATES:
1-800-346-4175 (LONDONDERRY, NH)
CANADA:
1-800-361-6975 (QUEBEC)
1-800-387-6487 (ALL OTHER PROVINCES)
FOR PRODUCT INFO: <http://www.burndy.com>

HYLUG™ (UNDRILLED)			
ITEM NO: --	CAT NO: YA--2NU, YA--4NU (SEE TABLE)		
SCALE: 1/1	DRAWN BY: P. LAPONIUS 01/09/08		
CHECKER: J. MICHAUD 01/15/08	DSN APPVL: J. MICHAUD 01/15/08		
MFG APPVL: --	QC APPVL: J. BRODEUR 01/15/08		
MKT APPVL: J. SYLVIA 01/15/08	DRAWING NO: 10085771		
PROD FAM: --	PROJECT #: --		
DOCUMENT TYPE: Sales	SIZE: D	SHEET 1 OF 4	
REL LEVEL: Released	REV: D		



CATALOG NUMBER	STRANDED COPPER CONDUCTOR ACCOMMODATED			INSTALLATION TOOLING (# CRIMPS)																	DIELESS (# CRIMPS)	WIRE STRIP LENGTH
	CODE (AWG)	NAVY	METRIC SIZE (CLASS 2)	COLOR CODE	DIE INFORMATION		MECHANICAL					HYDRAULIC										
					DIE INDEX	TYPE	Y2MR	OUR840	MD6 MD7	MD6--R2	MD7-34R	BCT500 Y500CT PAT600	Y34A Y34B Y34BH	Y35, Y39, Y750 BAT35, BAT750 PAT750	Y46	Y45	Y48B	Y60BHU				
YA8C-2NU	#8 AWG	23	-----	RED	49	RED DIE SET	RED (2)	X8CRT(1) W8CVT(1)	W8CRT(1) W8CVT(1)	W8CRT(1) W8CVT(1)	W8CRT(1) W8CVT(1)	X8CRT(2) W8CRT(1) W8CVT(1)	-----	-----	U8CRT(1)	U8CRT(1)	U8CRT(1)	---	---	RATCHET: Y8MRB-1 (1) MECHANICAL: MY29-3 (1) MY29-11(1) HYDRAULIC: Y644M (1) BAT644M (1) PAT644M (1) Y81K-SERIES (1) PAT81K-SERIES (1)	7/8"	
YA6C-2NU	#6 AWG	--	-----	BLUE	7 374	BLUE DIE SET	BLUE (2)	X5CRT(2)	W5CRT(2) W5CVT(2)	W5CRT(2) W5CVT(2)	W5CRT(2) W5CVT(2)	X5CRT(2) W5CRT(2) W5CVT(2)	-----	-----	U5CRT(2) U8CABT(2)	U5CRT(2) U8CABT(2)	U5CRT(2) U8CABT(2)	---	---	MECHANICAL: MY29-3 (2) MY29-11(2) HYDRAULIC: Y644M (1) BAT644M (1) PAT644M (1) Y81K-SERIES (1) PAT81K-SERIES (1)	1-3/16"	
YA4C-2NU	#4 AWG	40	-----	GRAY	8 346	GRAY DIE SET	GRAY (4)	X4CRT(2)	W4CRT(2) W4CVT(2)	W4CRT(2) W4CVT(2)	W4CRT(2) W4CVT(2)	X4CRT(2) W4CRT(2) W4CVT(2)	-----	-----	U4CRT(2) U6CABT(2)	U4CRT(2) U6CABT(2)	U4CRT(2) U6CABT(2)	---	---		1-3/16"	
YA3C-2NU	#3 AWG #2 SOL	50	25mm ² STR [6.6]	WHITE	9	WHITE DIE SET	-----	-----	-----	-----	-----	-----	-----	-----	U3CRT(2)	U3CRT(2)	U3CRT(2)	---	---		1-5/16"	
YA2C-2NU	#2 AWG	60	-----	BROWN	10	BROWN DIE SET	BROWN (4)	X2CRT(2)	W2CRT(2) W2CVT(2)	W2CRT(2) W2CVT(2)	W2CRT(2) W2CVT(2)	X2CRT(2) W2CRT(2) W2CVT(2)	-----	-----	U2CRT(2)	U2CRT(2)	U2CRT(2)	---	---		1-5/16"	
YA1C-2NU	#1 AWG	75	-----	GREEN	11 375	GREEN DIE SET	-----	X1CRT-1(2)	W1CRT-1(2) W1CVT(2)	W1CRT-1(2) W1CVT(2)	W1CRT-1(2) W2CVT(2)	X1CRT-1(2) W1CRT-1(2) W1CVT(2)	-----	-----	U1CRT-1(2) U4CABT(2)	U1CRT-1(2) U4CABT(2)	U1CRT-1(2) U4CABT(2)	---	---		1-7/16"	
YA25-2NU	1/0 AWG	100	-----	PINK	12 348	PINK DIE SET	-----	X25RT(4)	W25RT(4) W25VT(4)	W25RT(4) W25VT(4)	W25RT(4) W25VT(4)	X25RT(4) W25RT(4) W25VT(4)	A25R(2)	U25RT(2) U2CABT(2)	U25RT(2) U2CABT(2)	U25RT(2) U2CABT(2)	---	---	1-7/16"			
YA26-2NU	2/0 AWG	125	70mm ² STR [11]	BLACK	13	BLACK DIE SET	-----	X26RT(4)	W26RT(4) W26VT(4)	W26RT(4) W26VT(4)	W26RT(4) W26VT(4)	X26RT(4) W26RT(4) W26VT(4)	-----	-----	U26RT(2)	U26RT(2)	U26RT(2)	---	---		1-9/16"	
YA27-2NU	3/0 AWG	150	-----	ORANGE	14	ORANGE DIE SET	-----	X27RT(6)	W27RT(4) W27VT(4)	W27RT(4) W27VT(4)	W27RT(4) W27VT(4)	X27RT(6) W27RT(4) W27VT(4)	-----	-----	U27RT(2)	U27RT(2)	U27RT(2)	---	---		1-9/16"	

NOTES:

- CATALOG # PT6515 ADAPTOR IS REQUIRED TO USE "U" DIES IN Y45 SERIES TOOLS.
- CATALOG # PUADP-1 ADAPTOR IS REQUIRED TO USE "U" DIES IN Y46 SERIES TOOLS.
- Y35P3 INDENTOR ADAPTOR REQUIRED FOR Y34PR INDENTOR.
- PERMANENT DIE IN TOOLING.
- 5. DIMENSIONS IN BRACKETS [] ARE IN MILLIMETERS ROUNDED OFF TO THE NEAREST MILLIMETER, UNLESS OTHERWISE NOTED, AND ARE FOR REFERENCE ONLY.
- FOR USE BY CUSTOMERS THAT HAVE THIS HYPRESS™ NO NEW Y34A HYPRESS™ TOOLS ARE BEING PROCESSED. Y34A USES A--D TYPE NEST DIES.
- 7. "X", "W-RT", "W-VT", "U", & "L" DIE SETS ARE COLOR CODED. "A", "B", AND "C" DIES ARE NOT COLOR CODED. NESTS AND INDENTOR TYPE ARE NOT COLOR CODED.
- INDENTOR DIE ONLY - NO NEST REQUIRED.


TO ORDER BURNDY® PRODUCTS CALL		UNITED STATES: 1-800-346-4175 (LONDONDERRY, NH)		CANADA: 1-800-361-6975 (QUEBEC) 1-800-387-6487 (ALL OTHER PROVINCES)		FOR PRODUCT INFO: http://www.burndy.com	
HYLUG™ (UNDRILLED)							
ITEM NO: --							
CAT NO: YA--2NU, YA--4NU (SEE TABLE)							
SCALE: 1/1		DRAWN BY: P. LAPONIUS 01/09/08		CHECKER: J. MICHAUD 01/15/08		DSN APPVL: J. MICHAUD 01/15/08	
MFG APPVL: --		QC APPVL: J. BRODEUR 01/15/08		MKT APPVL: J. SYLVIA 01/15/08		DRAWING NO	
PROD FAM: --		PROJECT #: --		SIZE		10085771	
DOCUMENT TYPE: Sales		REL LEVEL: Released		D		SHEET 2 OF 4	

REV.	DATE	DESCRIPTION	ECO	BY	C'K'D.
D	6/08/2020	UPDATED AS PER MARKUP	53693	YR	SS

CATALOG NUMBER	STRANDED COPPER CONDUCTOR ACCOMMODATED			INSTALLATION TOOLING (# CRIMPS)																	DIELESS (# CRIMPS)	WIRE STRIP LENGTH
	CODE (AWG)	NAVY	METRIC SIZE (CLASS 2)	COLOR CODE	DIE INFORMATION		MECHANICAL					HYDRAULIC										
					DIE INDEX	TYPE	Y2MR <4	OUR840	MD6 MD7	MD6--R2	MD7-34R	BCT500 Y500CT PAT600	Y34A Y34B Y34BH <6> <3>	Y35, Y39, Y750 BAT35, BAT750 PAT750 <3>	Y46 <2> <3>	Y45 <1> <3>	Y48B	Y60BHU				
YA28-2NU	4/0 AWG	200	-----	PURPLE	15	PURPLE DIE SET	-----	X28RT(6)	W28RT(4) W28VT(4)	W28RT(4) W28VT(4)	W28RT(4) W28VT(4)	X28RT(6) W28RT(4) W28VT(4)	-----	U28RT(2)	U28RT(2)	U28RT(2)	C28R(2)	L28RT(1)	MECHANICAL: MY29-3 (2) MY29-11(2)	1-11/16"		
						NEST	-----	-----	-----	-----	-----	-----	B28D(1) A28D(1) Y34PR	U28D-1(1) Y34PR	U28D-1(1) Y34PR	U28D-1(1) Y34PR	C28D(1) Y48PR	---			HYDRAULIC: Y644M (1) BAT644M (1) PAT644M (1) Y81K-SERIES (1) PAT81K-SERIES (1)	
YA29-2NU	250 kcmil	250	120mm ² STR [14.5]	YELLOW	16	YELLOW DIE SET	-----	X29RT(8)	W29VT(4)	W29RT(4) W29VT(4)	W29VT(4)	X29RT(8) W29RT(4) W29VT(4)	-----	U29RT(2)	U29RT(2)	U29RT(2)	C29R(2)	L29RT(1)	HYDRAULIC: Y644M (1) BAT644M (1) PAT644M (1) Y81K-SERIES (1) PAT81K-SERIES (1)	1-11/16"		
						NEST	-----	-----	-----	-----	-----	-----	B29D(2) A29D(2) Y34PR	U29D-1(2) Y34PR	U29D-1(2) Y34PR	U29D-1(2) Y34PR	C29D(1) Y48PR	---				
YA30-2NU	300 kcmil	300	150mm ² STR [16.2]	WHITE	17 298	WHITE DIE SET	-----	-----	-----	W30RT(4)	W30VT(4)	X30RT(4) W30VT(4)	A28AR(2)	U30RT(4) U28ART(4)	U30RT(4) U28ART(4)	U30RT(4) U28ART(4)	C30R(1) C28AR(1)	L30RT(1)	HYDRAULIC: Y644M (1) BAT644M (1) PAT644M (1) Y81K-SERIES (1) PAT81K-SERIES (1)	2-1/16"		
						NEST	-----	-----	-----	-----	-----	-----	B30D(2) A30D(2) Y34PR	U30D-1(2) Y34PR	U30D-1(2) Y34PR	U30D-1(2) Y34PR	C30D(1) Y48PR	---				
YA31-2NU	350 kcmil	350	-----	RED	18 324	RED DIE SET	-----	-----	-----	W31RT(4) W31VT(4)	W31VT(4)	W31RT(4) W31VT(4)	-----	U31RT(4) U29ART(4)	U31RT(4) U29ART(4)	U31RT(4) U29ART(4)	C31R(1) C29AR(1)	L31RT(1) L29ART(1)	HYDRAULIC: Y644M (1) BAT644M (1) PAT644M (1) Y81K-SERIES (1) PAT81K-SERIES (1)	2-1/16"		
						NEST	-----	-----	-----	-----	-----	-----	B31D(2) A31D(2) Y34PR	U31D-1(2) Y34PR	U31D-1(2) Y34PR	U31D-1(2) Y34PR	C31D(1) Y48PR	---				
YA32-2NU	400 kcmil	400	-----	BLUE	19 470	BLUE DIE SET	-----	-----	-----	W32RT(4) W32VT(4)	W32VT(4)	W32RT(4) W32VT(4)	-----	U32RT(4) U30ART(4)	U32RT(4) U30ART(4)	U32RT(4) U30ART(4)	C32R(1) C30AR(1)	L32RT(1) L30ART(1)	HYDRAULIC: Y644M (1) BAT644M (1) PAT644M (1) Y81K-SERIES (1) PAT81K-SERIES (1)	2-3/16"		
						NEST	-----	-----	-----	-----	-----	-----	B32D(2) A32D(2) Y34PR	U32D-1(2) Y34PR	U32D-1(2) Y34PR	U32D-1(2) Y34PR	C32D(2) Y48PR	---				
YA34-2NU	500 kcmil	--	240mm ² STR [23.1]	BROWN	20 299	BROWN DIE SET	-----	-----	-----	W34RT(4) W34VT(4)	W34VT(4)	X34RT(4) W34VT(4)	-----	U34RT(4) U31ART(4)	U34RT(4) U31ART(4)	U34RT(4) U31ART(4)	C34R(2) C31AR(2)	L34RT(2)	HYDRAULIC: Y644M (1) BAT644M (1) PAT644M (1) Y81K-SERIES (1) PAT81K-SERIES (1)	2-5/16"		
						NEST	-----	-----	-----	-----	-----	-----	B34D(1) A34D(1) Y34PR	U34D-1(2) Y34PR	U34D-1(2) Y34PR	U34D-1(2) Y34PR	C34D(2) Y48PR	---				

NOTES:

- 1 CATALOG # PT6515 ADAPTOR IS REQUIRED TO USE "U" DIES IN Y45 SERIES TOOLS.
- 2 CATALOG # PUADP-1 ADAPTOR IS REQUIRED TO USE "U" DIES IN Y46 SERIES TOOLS.
- 3 Y35P3 INDENTOR ADAPTOR REQUIRED FOR Y34PR INDENTOR.
- 4 PERMANENT DIE IN TOOLING.
- 5. DIMENSIONS IN BRACKETS [] ARE IN MILLIMETERS ROUNDED OFF TO THE NEAREST MILLIMETER, UNLESS OTHERWISE NOTED, AND ARE FOR REFERENCE ONLY.
- 6 FOR USE BY CUSTOMERS THAT HAVE THIS HYPRESS™ NO NEW Y34A HYPRESS™ TOOLS ARE BEING PROCESSED. Y34A USES A--D TYPE NEST DIES.
- 7. "X", "W-RT", "W-VT", "U", & "L" DIE SETS ARE COLOR CODED. "A", "B", AND "C" DIES ARE NOT COLOR CODED. NESTS AND INDENTOR TYPE ARE NOT COLOR CODED.
- 8 INDENTOR DIE ONLY - NO NEST REQUIRED.

TO ORDER BURNDY® PRODUCTS CALL UNITED STATES: 1-800-346-4175 (LONDONDERRY, NH) CANADA: 1-800-361-6975 (QUEBEC) 1-800-387-6487 (ALL OTHER PROVINCES) FOR PRODUCT INFO: http://www.burndy.com		HYLUG™ (UNDRILLED)	
		ITEM NO: --	CAT NO: YA--2NU, YA--4NU (SEE TABLE)
SCALE: 1/1 DRAWN BY: P. LAPONIUS 01/09/08 CHECKER: J. MICHAUD 01/15/08 DSN APPVL: J. MICHAUD 01/15/08 MFG APPVL: -- -- QC APPVL: J. BRODEUR 01/15/08 MKT APPVL: J. SYLVIA 01/15/08			
PROD FAM: -- PROJECT #: -- DOCUMENT TYPE: Sales REL LEVEL: Released		DRAWING NO 10085771	REV D
		SIZE D	SHEET 3 OF 4

REV.	DATE	DESCRIPTION	ECO	BY	C'K'D.
D	6/08/2020	UPDATED AS PER MARKUP	53693	YR	SS

CATALOG NUMBER	STRANDED COPPER CONDUCTOR ACCOMMODATED			INSTALLATION TOOLING (# CRIMPS)															DIELESS (# CRIMPS)	WIRE STRIP LENGTH		
	CODE (AWG)	NAVY	METRIC SIZE (CLASS 2)	COLOR CODE	DIE INFORMATION		MECHANICAL					HYDRAULIC										
					DIE INDEX	TYPE	Y2MR <4	OUR840	MD6 MD7	MD6--R2	MD7-34R	Y34A Y34B Y34BH	Y35, Y39, Y750 BAT35, BAT750 PAT750 <3	Y46 <2	Y45 <1	Y48B	Y60BHU					
YA36-2NU	600 kcmil	---	300mm ² STR [23.1]	GREEN	22 472	GREEN DIE SET	-----	-----	-----	-----	-----	-----	-----	-----	-----	U36RT(4) U32ART(4)	U36RT(4) U32ART(4)	U36RT(4) U32ART(4)	C36R(2) C32AR(2)	L36RT(2) L32ART(2)	HYDRAULIC: Y644M (1) BAT644M (1) PAT644M (1) Y81K-SERIES (1) PAT81K-SERIES (1)	2-3/4"
YA39-2NU	750 kcmil	---	375mm ² STR	BLACK	24	BLACK DIE SET	-----	-----	-----	-----	-----	-----	-----	-----	U39RT(4)	U39RT(4) P39RT(4)	U39RT(4) S39RT(4)	C39R(2) C36AR(2)	L39RT(2) L36ART(2)	2-15/16"		
YA40-2NU	800 kcmil	---	400mm ² STR [26.1]	ORANGE	25	ORANGE DIE SET	-----	-----	-----	-----	-----	-----	-----	-----	-----	P40RT(4)	S40RT(4)	C40R(2)	L40RT(2)	3"		
YA44-2NU	1000 kcmil	---	500mm ² STR [28.3]	WHITE	27	WHITE DIE SET	-----	-----	-----	-----	-----	-----	-----	-----	-----	-----	P44RT(4)	S44RT(4)	C44R(2)	L28RT(1)		3-1/16"
YA45-2NU	1250 kcmil	---	-----	YELLOW	29	YELLOW DIE SET	-----	-----	-----	-----	-----	-----	-----	-----	-----	-----	P45RT(6)	S45RT(6)	C45R(3)	L45RT(3)		3-1/4"
YA46-2NU	1500 kcmil	---	800mm ² STR [37.6]	GREEN	31	GREEN DIE SET	-----	-----	-----	-----	-----	-----	-----	-----	-----	-----	P46RT(6)	S46RT(6)	C46R(3)	L46RT(3)		3-1/4"
YA47-2NU	1750 kcmil	---	-----	GRAY	33	GRAY DIE SET	-----	-----	-----	-----	-----	-----	-----	-----	-----	-----	-----	-----	C47R(6)	L47RT(3)		3-1/2"
YA48-2NU	2000 kcmil (1.632 DIA.)	---	1000mm ² STR [42.2]	BROWN	34	BROWN DIE SET	-----	-----	-----	-----	-----	-----	-----	-----	-----	-----	-----	-----	-----	L48RT(4)		3-1/2"
YA44-4NU	1000 kcmil	---	500mm ² STR [28.3]	WHITE	27	WHITE DIE SET	-----	-----	-----	-----	-----	-----	-----	-----	-----	-----	P44RT(6)	S44RT(4)	C44R(2)	L44RT(2)		3-1/16"
YA45-4NU	1250 kcmil	---	-----	YELLOW	29	YELLOW DIE SET	-----	-----	-----	-----	-----	-----	-----	-----	-----	-----	P45RT(6)	S45RT(6)	C45R(3)	L45RT(3)		3-1/4"
YA46-4NU	1500 kcmil	---	800mm ² STR [37.6]	GREEN	31	GREEN DIE SET	-----	-----	-----	-----	-----	-----	-----	-----	-----	-----	P46RT(6)	S46RT(6)	C46R(3)	L46RT(3)	3-1/4"	

NOTES:

- 1 CATALOG # PT6515 ADAPTOR IS REQUIRED TO USE "U" DIES IN Y45 SERIES TOOLS.
- 2 CATALOG # PUADP-1 ADAPTOR IS REQUIRED TO USE "U" DIES IN Y46 SERIES TOOLS.
- 3 Y35P3 INDENTOR ADAPTOR REQUIRED FOR Y34PR INDENTOR.
- 4 PERMANENT DIE IN TOOLING.
- 5 DIMENSIONS IN BRACKETS [] ARE IN MILLIMETERS ROUNDED OFF TO THE NEAREST MILLIMETER, UNLESS OTHERWISE NOTED, AND ARE FOR REFERENCE ONLY.
- 6 FOR USE BY CUSTOMERS THAT HAVE THIS HYPRESS™ NO NEW Y34A HYPRESS™ TOOLS ARE BEING PROCESSED. Y34A USES A--D TYPE NEST DIES.
- 7 "X", "W-RT", "W-VT", "U", & "L" DIE SETS ARE COLOR CODED. "A", "B", AND "C" DIES ARE NOT COLOR CODED. NESTS AND INDENTOR TYPE ARE NOT COLOR CODED.
- 8 INDENTOR DIE ONLY - NO NEST REQUIRED.

REV.	DATE	DESCRIPTION	ECO	BY	C'K'D.
D	6/08/2020	UPDATED AS PER MARKUP	53693	YR	SS

TO ORDER BURNDY® PRODUCTS CALL UNITED STATES: 1-800-346-4175 (LONDONDERRY, NH) CANADA: 1-800-361-6975 (QUEBEC) 1-800-387-6487 (ALL OTHER PROVINCES) FOR PRODUCT INFO: http://www.burndy.com		HYLUG™ (UNDRILLED)	
		ITEM NO: --	CAT NO: YA--2NU, YA--4NU (SEE TABLE)
SCALE: 1/1		DRAWN BY: P. LAPONIUS 01/09/08	
CHECKER: J. MICHAUD 01/15/08		DSN APPVL: J. MICHAUD 01/15/08	
MFG APPVL: --		QC APPVL: J. BRODEUR 01/15/08	
MKT APPVL: J. SYLVIA 01/15/08		DRAWING NO	
PROD FAM: --		10085771	
PROJECT #: --		SIZE	
DOCUMENT TYPE: Sales		D	
REL LEVEL: Released		SHEET 4 OF 4	