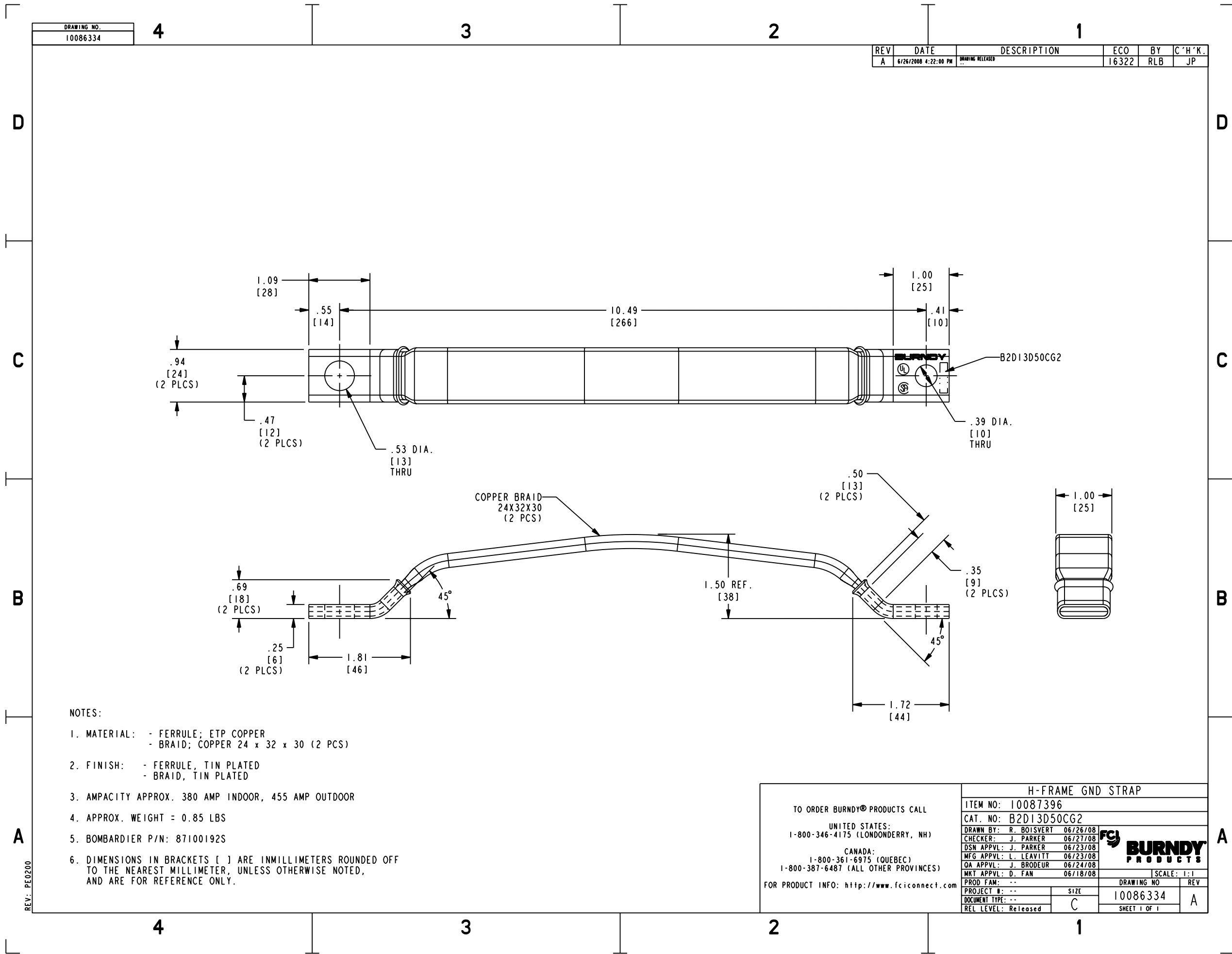


DRAWING NO.  
10086334

REV	DATE	DESCRIPTION	ECO	BY	C'H'K.
A	6/26/2008 4:22:00 PM	DRAWING RELEASED	16322	RLB	JP



NOTES:

- MATERIAL: - FERRULE; ETP COPPER  
- BRAID; COPPER 24 x 32 x 30 (2 PCS)
- FINISH: - FERRULE, TIN PLATED  
- BRAID, TIN PLATED
- AMPACITY APPROX. 380 AMP INDOOR, 455 AMP OUTDOOR
- APPROX. WEIGHT = 0.85 LBS
- BOMBARDIER P/N: 87100192S
- DIMENSIONS IN BRACKETS [ ] ARE INMILLIMETERS ROUNDED OFF TO THE NEAREST MILLIMETER, UNLESS OTHERWISE NOTED, AND ARE FOR REFERENCE ONLY.

TO ORDER BURNDY® PRODUCTS CALL  
UNITED STATES:  
1-800-346-4175 (LONDONDERRY, NH)  
CANADA:  
1-800-361-6975 (QUEBEC)  
1-800-387-6487 (ALL OTHER PROVINCES)  
FOR PRODUCT INFO: <http://www.fciconnect.com>

H-FRAME GND STRAP	
ITEM NO:	10087396
CAT. NO:	B2D13D50CG2
DRAWN BY:	R. BOISVERT 06/26/08
CHECKER:	J. PARKER 06/27/08
DSN APPVL:	J. PARKER 06/23/08
MFG APPVL:	L. LEAVITT 06/23/08
QA APPVL:	J. BRODEUR 06/24/08
MKT APPVL:	D. FAN 06/18/08
SCALE:	1:1
PROD FAM:	--
PROJECT #:	--
DOCUMENT TYPE:	--
REL LEVEL:	Released
DRAWING NO	10086334
REV	A
SHEET	1 OF 1

REV: PE0200