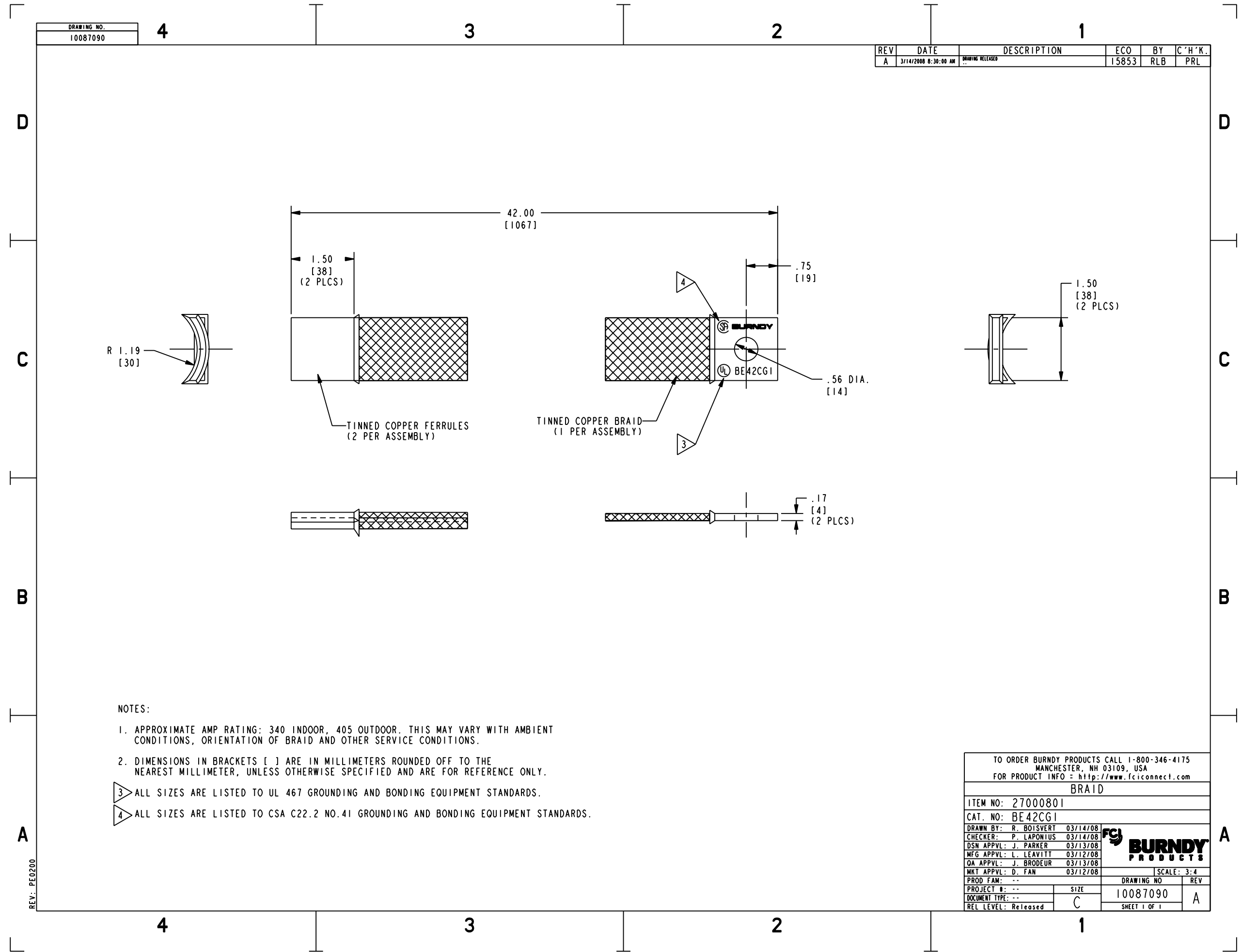


DRAWING NO.
10087090

REV	DATE	DESCRIPTION	ECO	BY	C'H'K.
A	3/14/2008 8:30:00 AM	DRAWING RELEASED	15853	RLB	PRL



NOTES:

- APPROXIMATE AMP RATING: 340 INDOOR, 405 OUTDOOR. THIS MAY VARY WITH AMBIENT CONDITIONS, ORIENTATION OF BRAID AND OTHER SERVICE CONDITIONS.
- DIMENSIONS IN BRACKETS [] ARE IN MILLIMETERS ROUNDED OFF TO THE NEAREST MILLIMETER, UNLESS OTHERWISE SPECIFIED AND ARE FOR REFERENCE ONLY.
- ALL SIZES ARE LISTED TO UL 467 GROUNDING AND BONDING EQUIPMENT STANDARDS.
- ALL SIZES ARE LISTED TO CSA C22.2 NO.41 GROUNDING AND BONDING EQUIPMENT STANDARDS.

TO ORDER BURNDY PRODUCTS CALL 1-800-346-4175
MANCHESTER, NH 03109, USA
FOR PRODUCT INFO = <http://www.fciconnect.com>

BRAID

ITEM NO: 27000801
CAT. NO: BE42CG1

DRAWN BY: R. BOISVERT	03/14/08	
CHECKER: P. LAPONIUS	03/14/08	
DSN APPVL: J. PARKER	03/13/08	
MFG APPVL: L. LEAVITT	03/12/08	
QA APPVL: J. BRODEUR	03/13/08	
MKT APPVL: D. FAN	03/12/08	SCALE: 3:4
PROD FAM: --	DRAWING NO	REV
PROJECT #: --	10087090	A
DOCUMENT TYPE: --	C	SHEET 1 OF 1
REL LEVEL: Released		

REV: PED200