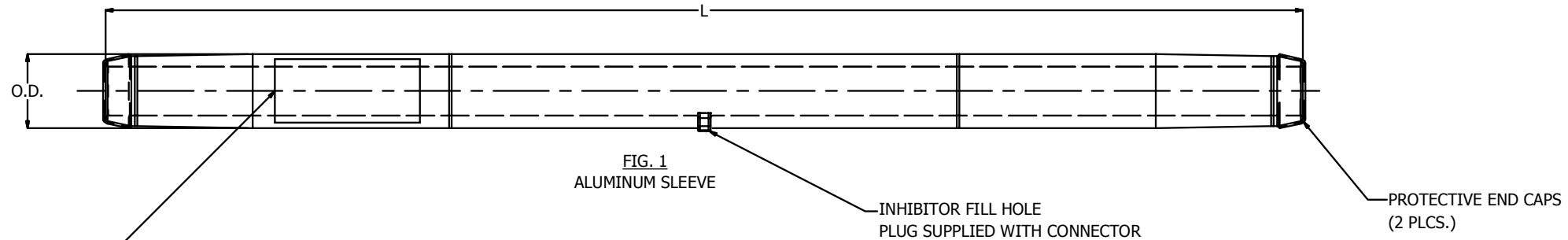


REV	DATE	DESCRIPTION	ECO	BY	CHK.
H	12/26/2012	FULL TENSION SPLICE KIT- ACSS EHV TABLE UPDATED	29741	SRI	SP

VIEW BEFORE INSTALLATION



TYPICAL LETTERING
EACH END

BURNDY
HYSPLICE YTS451RTHT HT EHV
715.5 Kcmil ACSS
26-7 24-7 STR
795 Kcmil ACSS
24-7 26-7 STR
45-7 54-7 STR
BYDDDD
OVERLAP CRIMPS
USE BURNDY DIE 725
BURNDY PRESS Y60BHU

DATE CODE

FIG. 1
ALUMINUM SLEEVE

INHIBITOR FILL HOLE
PLUG SUPPLIED WITH CONNECTOR

PROTECTIVE END CAPS
(2 PLCS.)

TYPICAL LETTERING

BURNDY YTS48RS
FULL TENSION HYSPLICE
FOR STEEL CORE-ACSR, ACSS
715.5, 795 (26-7), 954 (24-7)
556.5 (30-7) 954, 1033.5 (54-7)
1113, 1192.5 (54-19)
2515 (76-19), 1780 (84-19)

START HERE

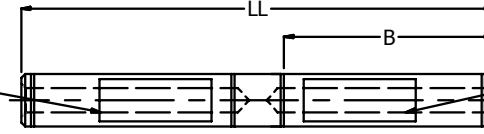


FIG. 2
STEEL SLEEVE

TYPICAL LETTERING

BYDDDD
OVERLAP CRIMPS
BURNDY DIE 726
BURNDY PRESS Y60BHU

DATE CODE

NOTES:


- MATERIAL:
 - CONDUCTIVE MEMBER : ALUMINUM ALLOY SLEEVE
 - MECHANICAL MEMBER (CORE SPLICE): STEEL ALLOY SLEEVE
 - FILLER PLUG: ALUMINUM ALLOY
- DESIGNED FOR CORONA FREE OPERATION UP TO 550 KV.
- ASSEMBLED SPLICE TENSILE STRENGTH MEETS ANSI C119.4-2004, CLASS 1 REQUIREMENTS
- PENHT HIGH TEMPERATURE INHIBITOR IS NOT INCLUDED IN THE KIT AND IS PURCHASED SEPARATELY.
- TOOLING IS NOT INCLUDED IN THE KIT AND IS PURCHASED SEPARATELY.
- INSTALLATION INSTRUCTION: DRAWING NO. 10107794 (FORM10107793)
- THESE DIE INDEXES MAKE A HEXAGONAL CRIMP EXCEPT THE DIE INDEX NUMBER "789".
- CATALOG # PT6515 ADAPTOR IS REQUIRED TO USE "U" DIES IN THE Y45 SERIES TOOL.
- CATALOG # PUADP-1 ADAPTOR IS REQUIRED TO USE "U" DIES IN THE Y46 SERIES TOOL.
- DIMENSIONS IN BRACKETS [] DENOTES METRIC UNITS [SI UNITS] AND ARE ROUNDED TO THE NEAREST WHOLE NUMBER, UNLESS OTHERWISE SPECIFIED THESE UNITS SHALL BE USED FOR REFERENCE ONLY.

TO ORDER BURNDY® PRODUCTS CALL UNITED STATES 1-800-346-4175 (LONDONDERRY, NH) CANADA: 1-800-361-6975 (QUEBEC) 1-800-387-6487 (ALL OTHER PROVINCES) FOR PRODUCT INFO: http://www.burndy.com	ACSS SPLICE KITS, EHV			
	ITEM NO: SEE TABLE			
	CAT. NO: SEE TABLE			
	DRAWN BY: D.D.	9/29/2008		
	CHECKER: --	--		
	DSN APRVL: P WALTZ	1/15/2013		
	MFG APRVL: --	--		
	QA APRVL: --	--	MKT APRVL: D.HAMILTON 1/12/2013	
	PROD FAM: TRANSMISSION	SIZE	DRAWING NO	REV
	PROJECT #: --	D	10092589	H
DOCUMENT TYPE: SALES		SHEET 1 OF 2		
REL LEVEL: Released				

REV	DATE	DESCRIPTION	ECO	BY	CHK
H	12/26/2012	FULL TENSION SPLICE KIT- ACSS EHV TABLE UPDATED	29741	SRI	SP

BURNDY - FULL TENSION ACSS EHV SPLICE KITS

ACSS CONDUCTORS			SPLICE KITS		KIT CONTAINS (INSTALLATION TOOLING NOT INCLUDED)												
CONDUCTOR CODE NAME	Size Kcmil	STRANDING	CONDUCTOR O.D. INCHES [MM]	KIT CATALOG NUMBER	KIT ITEM NUMBER	ALUMINIUM SLEEVE (QTY 1)				STEEL SLEEVE (QTY 1)							
						CATALOG NUMBER	L INCHES [MM]	O.D. INCHES [MM]	TOOLING			CATALOG NUMBER	B INCHES [MM]	LL INCHES [MM]	TOOLING		
						DIE INDEX	Y46	Y45	Y60BHU	CATALOG NUMBER	B INCHES [MM]	LL INCHES [MM]	DIE INDEX	Y60BHU			
LINNET	336.4	26/7	0.720 [18.29]	YTS32RT34RSHT	30011076	YTS32RTHT	25.92 [658.37]	1.19 [30.23]	717	-	-	L717	YTS34RS	2.45 [62.23]	5.74 [145.80]	718	L718
ORIOLE	336.4	30/7	0.741 [18.82]	YTS32RT33RSHT	30011075	YTS32RTHT	25.92 [658.37]	1.19 [30.23]	717	-	-	L717	YTS33RS	2.45 [62.23]	5.74 [145.80]	718	L718
IBIS	397.5	26/7	0.783 [19.89]	YTS34RT34RSHT	30011077	YTS34RTHT	25.92 [658.37]	1.28 [32.51]	719	-	-	L719	YTS34RS	2.45 [62.23]	5.74 [145.80]	718	L718
FLICKER	477	24/7	0.846 [21.49]	YTS36RT362RSHT	10103098	YTS36RTHT	26.92 [683.77]	1.41 [35.81]	720	-	-	L720	YTS362RS	2.46 [62.48]	5.88 [149.35]	721	L721
HAWK	477	26/7	0.858 [21.79]	YTS36RT36RSHT	30009402	YTS36RTHT	26.92 [683.77]	1.41 [35.81]	720	-	-	L720	YTS36RS	2.46 [62.48]	5.76 [146.30]	721	L721
PARAKEET	556.5	24/7	0.914 [23.22]	YTS39RT43RSHT	30011079	YTS39RTHT	28.74 [729.10]	1.50 [38.10]	722	-	-	L722	YTS43RS	2.47 [62.74]	5.90 [149.86]	723	L723
DOVE	556.5	26/7	0.927 [23.55]	YTS39RT43RSHT	30011079	YTS39RTHT	28.74 [729.10]	1.50 [38.10]	722	-	-	L722	YTS43RS	2.47 [62.74]	5.90 [149.86]	723	L723
PEACOCK	605	24/7	0.953 [24.21]	YTS43RT43RSHT	30011081	YTS43RTHT	30.28 [769.11]	1.61 [40.89]	724	-	-	L724	YTS43RS	2.47 [62.74]	5.90 [149.86]	723	L723
SQUAB	605	26/7	0.966 [24.54]	YTS43RT43RSHT	30011081	YTS43RTHT	30.28 [769.11]	1.61 [40.89]	724	-	-	L724	YTS43RS	2.47 [62.74]	5.90 [149.86]	723	L723
ROOK	636	24/7	0.977 [24.82]	YTS43RT43RSHT	30011081	YTS43RTHT	30.28 [769.11]	1.61 [40.89]	724	-	-	L724	YTS43RS	2.47 [62.74]	5.90 [149.86]	723	L723
GROSBEAK	636	26/7	0.991 [25.17]	YTS43RT43RSHT	30011081	YTS43RTHT	30.28 [769.11]	1.61 [40.89]	724	-	-	L724	YTS43RS	2.47 [62.74]	5.90 [149.86]	723	L723
FLAMINGO	666.6	24/7	1.000 [25.40]	YTS43RT43RSHT	30011081	YTS43RTHT	30.28 [769.11]	1.61 [40.89]	724	-	-	L724	YTS43RS	2.47 [62.74]	5.90 [149.86]	723	L723
STARLING	715.5	26/7	1.051 [26.70]	YTS451RT48RSHT	10094235	YTS451RTHT	36.96 [938.78]	1.80 [45.72]	725	-	-	L725	YTS48RS	4.00 [101.6]	9.00 [228.60]	726	L726
CUCKOO	795	24/7	1.092 [27.74]	YTS451RT449RSHT	30011082	YTS451RTHT	36.96 [938.78]	1.80 [45.72]	725	-	-	L725	YTS449RS	4.00 [101.6]	9.00 [228.60]	726	L726
DRAKE	795	26/7	1.107 [28.12]	YTS451RT48RSHT	10094235	YTS451RTHT	36.96 [938.78]	1.80 [45.72]	725	-	-	L725	YTS48RS	4.00 [101.6]	9.00 [228.60]	726	L726
TERN	795	45/7	1.063 [27.00]	YTS451RT48RSHT	10094235	YTS451RTHT	36.96 [938.78]	1.80 [45.72]	725	-	-	L725	YTS48RS	4.00 [101.6]	9.00 [228.60]	726	L726
CONDOR	795	54/7	1.092 [27.74]	YTS451RT449RSHT	30011082	YTS451RTHT	36.96 [938.78]	1.80 [45.72]	725	-	-	L725	YTS449RS	4.00 [101.6]	9.00 [228.60]	726	L726
BUZZARD	851	45/7	1.100 [27.94]	YTS451RT362RSHT	50000140	YTS451RTHT	36.96 [938.78]	1.80 [45.72]	725	-	-	L725	YTS362RS	2.46 [62.48]	5.88 [149.35]	721	L721
RAIL	954	45/7	1.165 [29.59]	YTS48RT481RSHT	10105999	YTS48RTHT	37.16 [943.86]	1.97 [50.04]	727	-	-	L727	YTS481RS	4.01 [101.85]	9.00 [228.60]	726	L726
CARDINAL	954	54/7	1.196 [30.38]	YTS48RT48RSHT	10105998	YTS48RTHT	37.16 [943.86]	1.97 [50.03]	727	-	-	L727	YTS48RS	4.00 [101.60]	9.00 [228.60]	726	L726
ORTOLAN	1033.5	45/7	1.212 [30.78]	YTS49RT483RSHT	30011085	YTS49RTHT	37.02 [940.31]	1.97 [50.04]	727	-	-	L727	YTS483RS	4.01 [101.85]	9.00 [228.60]	726	L726
CURLEW	1033.5	54/7	1.245 [31.62]	YTS49RT48RSHT	10113304	YTS49RTHT	37.02 [940.31]	1.97 [50.04]	727	-	-	L727	YTS48RS	4.00 [101.60]	9.00 [228.60]	726	L726
BLUEJAY	1113	45/7	1.258 [31.95]	YTS49RT483RSHT	30011085	YTS49RTHT	37.02 [940.31]	1.97 [50.04]	727	-	-	L727	YTS483RS	4.01 [101.85]	9.00 [228.60]	726	L726
FINCH	1113	54/19	1.292 [32.82]	YTS52RT48RSHT	10094582	YTS52RTHT	50.33 [1278.38]	2.25 [57.15]	728	-	-	L728	YTS48RS	4.00 [101.60]	9.00 [228.60]	726	L726
BUNTING	1192.5	45/7	1.302 [33.07]	YTS52RT521RSHT	30000878	YTS52RTHT	50.33 [1278.38]	2.25 [57.15]	728	-	-	L728	YTS521RS	4.00 [101.60]	9.00 [228.60]	726	L726
BITTERN	1272	45/7	1.345 [34.16]	YTS52RT521RSHT	30000878	YTS52RTHT	50.33 [1278.38]	2.25 [57.15]	728	-	-	L728	YTS521RS	4.00 [101.60]	9.00 [228.60]	726	L726
PHEASANT	1272	54/19	1.381 [35.08]	YTS52RT59RSHT	30011088	YTS52RTHT	50.33 [1278.38]	2.25 [57.15]	728	-	-	L728	YTS59RS	4.07 [103.38]	9.10 [231.14]	726	L726
DIPPER	1351.5	45/7	1.386 [35.20]	YTS52RT521RSHT	30000878	YTS52RTHT	50.33 [1278.38]	2.25 [57.15]	728	-	-	L728	YTS521RS	4.00 [101.60]	9.00 [228.60]	726	L726
MARTIN	1351.5	54/19	1.424 [36.17]	YTS52RT59RSHT	30011088	YTS52RTHT	50.33 [1278.38]	2.25 [57.15]	728	-	-	L728	YTS59RS	4.07 [103.38]	9.10 [231.14]	726	L726
NUTHATCH	1510.5	45/7	1.465 [37.21]	YTS549RT521RSHT	30011092	YTS549RTHT	42.13 [1070.10]	2.50 [63.50]	729	-	-	L729	YTS521RS	4.00 [101.60]	9.00 [228.60]	726	L726
PARROT	1510.5	54/19	1.505 [38.23]	YTS549RT59RSHT	30011093	YTS549RTHT	42.13 [1070.10]	2.50 [63.50]	729	-	-	L729	YTS59RS	4.07 [103.38]	9.10 [231.14]	726	L726
LAPWING	1590	45/7	1.504 [38.20]	YTS549RT549RSHT	3009404	YTS549RTHT	42.13 [1070.10]	2.50 [63.50]	729	-	-	L729	YTS549RS	4.00 [101.60]	9.00 [228.60]	726	L726
FALCON	1590	54/19	1.544 [39.22]	YTS56RT59RSHT	30008807	YTS56RTHT	42.13 [1070.10]	2.50 [63.50]	729	-	-	L729	YTS59RS	4.07 [103.38]	9.10 [231.14]	726	L726
CHUKAR	1780	84/19	1.601 [40.67]	YTS58RT48RSHT	30011095	YTS58RTHT	43.46 [1103.88]	2.50 [63.50]	735	-	-	L735	YTS48RS	4.00 [101.60]	9.00 [228.60]	726	L726
BLUEBIRD	2156	84/19	1.762 [44.76]	YTS59RT59RSHT	30011099	YTS59RTHT	50.91 [1293.11]	2.50 [63.50]	735	-	-	L735	YTS59RS	4.07 [103.38]	9.10 [231.14]	726	L726
KIWI	2167	72/7	1.735 [44.07]	YTS59RT521RSHT	30011098	YTS59RTHT	50.91 [1293.11]	2.50 [63.50]	735	-	-	L735	YTS521RS	4.00 [101.60]	9.00 [228.60]	726	L726

TO ORDER BURNDY® PRODUCTS CALL UNITED STATES 1-800-346-4175 (LONDONDERRY, NH) CANADA: 1-800-361-6975 (QUEBEC) 1-800-387-6487 (ALL OTHER PROVINCES) FOR PRODUCT INFO: http://www.burndy.com	ACSS SPLICE KITS, EHV				
	ITEM NO: SEE TABLE				
	CAT. NO: SEE TABLE				
	DRAWN BY: D.D.	9/29/2008			
	CHECKER: --	--			
	DSN APRVL: P WALTZ	1/15/2013			
	MFG APRVL: --	--			
	QA APRVL: --	--	MKT APRVL: D.HAMILTON 1/12/2013		
	PROD FAM: TRANSMISSION	DRAWING NO	REV		
	PROJECT #: --	SIZE	10092589	H	
DOCUMENT TYPE: SALES	D	SHEET 2 OF 2			
REL LEVEL: Released					