

BURNDY® PRODUCTS - HYLUG™ & HARDWARE

REV	DATE	DESCRIPTION	ECO	BY	CHK.
L	2020-10-29 01:00:00 EDT	DRAWING UPDATION PER MARKUPS	54481	MRA	NJS

6 ITEM NUMBER	CATALOG NUMBER	FIG. NO.	ACCOMMODATES ACC® CONDUCTOR		5 CONTAINS HARDWARE KIT CAT. #	CTC NUMBER	DIMENSIONS							7 INSTALLATION TOOLING (NOT INCLUDED) TOOLS, DIE SETS				APPROXIMATE WEIGHT LBS										
			CODE WORD	SIZE			C	D	L	N	O.D.	I.D.	T	H	DIE INDEX	Y45	Y46		Y60									
10092601	BYNA32RT15HACCC	1	LINNET	431 Kcmil	TMH24	600-153-1	3.25 [82]	4.50 [114]	15.5 [393]	1.12 [29]	1.19 [30]	.80 [20]	4.05 [103]	717	S717	P717	L717W											
10092600	BYNA32RT15ACCC		COPENHAGEN	438 Kcmil														--										
10092604	BYNA36RT15HACCC	HAWK	611 Kcmil	TMH24	600-153-3	4.25 [107]												15.8 [402]	1.41 [36]	.92 [23]	4.24 [108]	720	S720	P720	L720W			
10092603	BYNA36RT15ACCC	CASABLANCA	285mm²	--	600-153-5	4.50 [114]												16.2 [411]	1.50 [38]	.97 [25]	4.38 [111]	722	S722	P722	L722W			
10092607	BYNA39RT15HACCC	1	DOVE	713 Kcmil	TMH4A200	600-153-5	3.22 [82]	3.95 [100]	.63 [16]	1.50 [38]	.97 [25]	4.38 [111]	722	S722	P722	L722W												
50103247	BYNA39RT15ACCC		OSLO	330mm²													--											
10092610	BYNA43RT15HACCC	1	GROSBEAK	816 Kcmil	TMH24	600-153-7											3.22 [82]	3.95 [100]	.63 [16]	1.61 [41]	1.05 [27]	4.43 [113]	724	S724	P724	L724W		
10092609	BYNA43RT15ACCC		BRUSSELS	430mm²																							--	
8 10092613	BYNA45IRT15HACCC	2	DRAKE	1020 Kcmil	TMH24	600-253-5	3.22 [82]	3.95 [100]	.63 [16]	1.80 [46]	1.18 [30]	.45 [11]	4.45 [113]	725	S725	P725											L725W	
8 10092612	BYNA45IRT15ACCC		STOCKHOLM	470mm²																								--
10092616	BYNA49RT15HACCC	2	CARDINAL	1222 Kcmil	TMH24	600-253-7											3.22 [82]	3.95 [100]	.63 [16]	1.97 [50]	1.32 [33]	.52 [13]	4.67 [119]	727	--	--		L727W
10092615	BYNA49RT15ACCC		VIENNA	650mm²																								
10092619	BYNA52RT15HACCC	2	LONDON	780mm²	TMH9	600-253-11	3.22 [82]	3.95 [100]	.63 [16]	2.25 [57]	1.46 [37]	.71 [18]	5.06 [129]	728	--	--											L728W	
10103108	BYNA52RT15ACCC		BITTERN	1572 Kcmil																								
50018173	BYNA56RT15HACCC	2	LAPWING	1949 Kcmil	TMH19	600-353-1											3.22 [82]	3.95 [100]	.63 [16]	2.50 [64]	1.64 [42]	.86 [22]	5.43 [138]	735	--	--		L735W
50019223	BYNA56RT15ACCC		--	840mm²																								

5 CATALOG NO. TMH19  
HARDWARE KIT CONSIST OF

QTY.	DESCRIPTION
4	BOLT, HEX. HEAD 1/2"-13 X 2 1/2" LONG
4	HEX. NUT, 1/2"-13
4	FLAT WASHER 1/2"
4	RESILIENT WASHER 1/2"

5 CATALOG NO. TMH9  
HARDWARE KIT CONSIST OF

QTY.	DESCRIPTION
4	BOLT, HEX. HEAD 1/2"-13 X 2 1/4" LONG
4	HEX. NUT, 1/2"-13
4	FLAT WASHER 1/2"
4	RESILIENT WASHER 1/2"

5 CATALOG NO. TMH24  
HARDWARE KIT CONSIST OF

QTY.	DESCRIPTION
4	BOLT, HEX. HEAD 1/2"-13 X 2" LONG
4	HEX. NUT, 1/2"-13
4	FLAT WASHER 1/2"
4	RESILIENT WASHER 1/2"

NOTES:

- 1 MATERIAL:
  - CONNECTOR, ALUMINUM ALLOY, NO-OX-ID COATED
  - ALUMINUM FILLER PLUG
  - TMH9 & TMH24 & TMH19 & TMH4A200 HARDWARE
  - BOLTS (2024 T4), NUTS (6061 T6) AND FLAT WASHERS, ALUMINUM ALLOY
  - RESILIENT WASHERS, GALVANIZED STEEL

2. DIMENSIONS IN BRACKETS [ ] DENOTE METRIC UNITS [SI UNITS] AND ARE ROUNDED TO THE NEAREST WHOLE NUMBER. UNLESS OTHERWISE SPECIFIED THESE UNITS SHALL BE USED FOR REFERENCE ONLY.

3. DESIGNED FOR CORONA FREE OPERATION TO 230 KV NO ACCESSORIES REQUIRED.

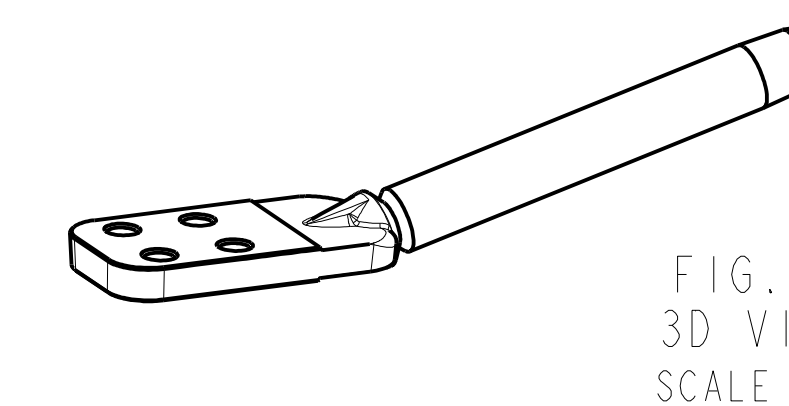
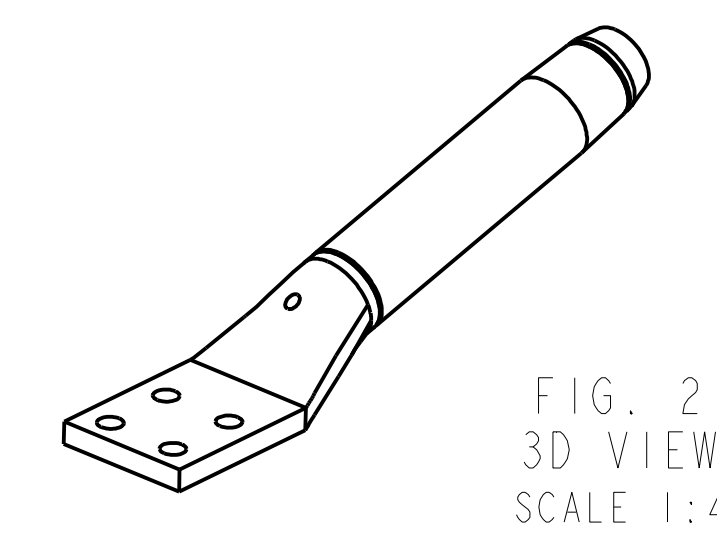
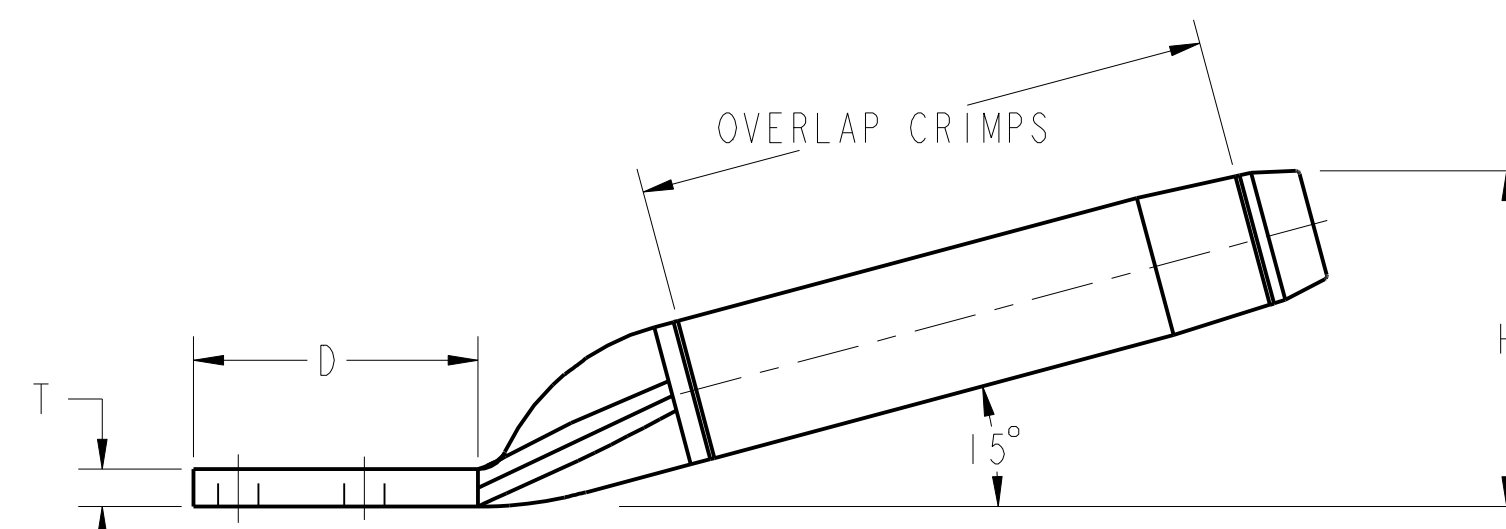
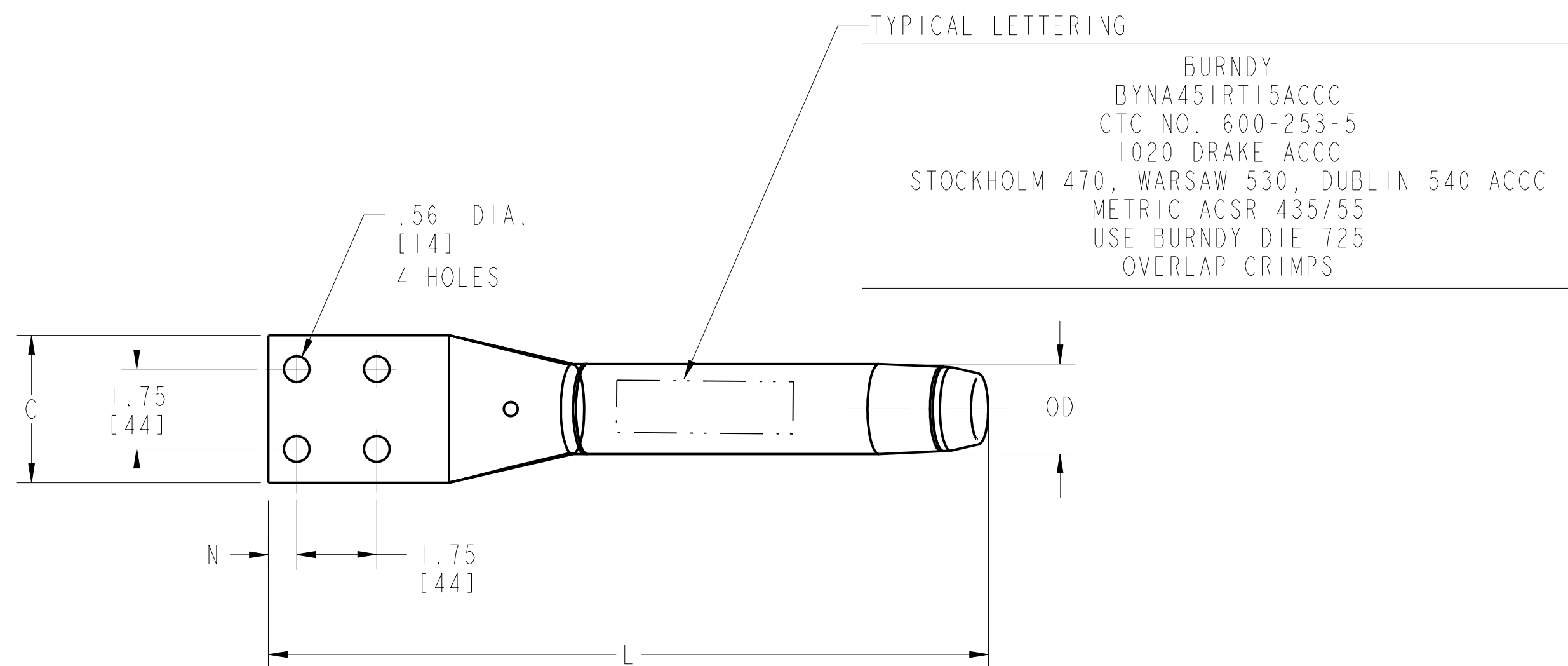
4. CONNECTOR SHALL BE SHIPPED UN-ASSEMBLED.

5 RECOMMENDED TIGHTENING TORQUE: 1/2-13 ALUMINUM HARDWARE: 300 LBS-IN [34 NM]

6 CATALOG NUMBER FOR HYLUG™ WITHOUT HARDWARE ARE CATALOG NUMBERS WITHOUT "H".

7 REFERENCE: 10092621, CONNECTOR INSTALLATION

8 ACCOMMODATES METRIC ACSR 435/55.



COMPRESSION TERMINAL CONNECTOR FOR  
(ACCC® ALUMINUM CONDUCTOR COMPOSITE CORE)

TO ORDER BURNDY® PRODUCTS CALL  
UNITED STATES  
1-800-346-4175 (LONDONDERRY, NH)  
CANADA:  
1-800-361-6975 (QUEBEC)  
1-800-387-6487 (ALL OTHER PROVINCES)  
FOR PRODUCT INFO: <http://www.burndy.com>

15 DEG HYLUG™ & HARDWARE (ACCC)	
ITEM NO:	SEE TABLE
CAT. NO:	SEE TABLE
DRAWN BY:	D.GANESH 11/19/08
CHECKER:	C.YORK 11/02/20
DSN APPVL:	D. BOUDREAU 11/02/20
MFG APPVL:	T. FOEHRING 11/02/20
QA APPVL:	T. WATTS 11/02/20
MKT APPVL:	--
PROD. FAM:	Transmissio/YNA
PROJECT #:	SIZE
DOCUMENT TYPE:	Sales
REL. LEVEL:	Released
DRAWING NO:	10093976
SCALE:	3:8
SHEET:	1 OF 1