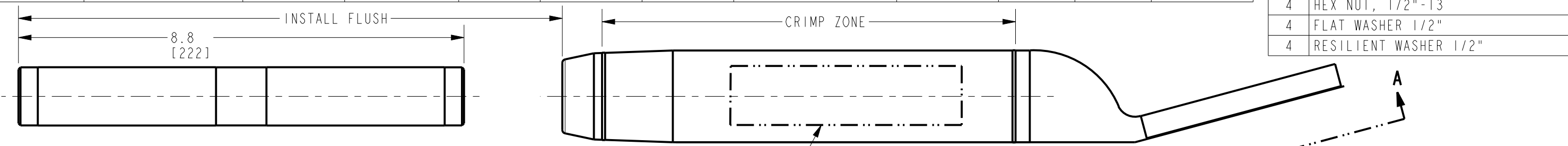


BURNDY PRODUCTS - HYLUG™ & HARDWARE (ACCC®)

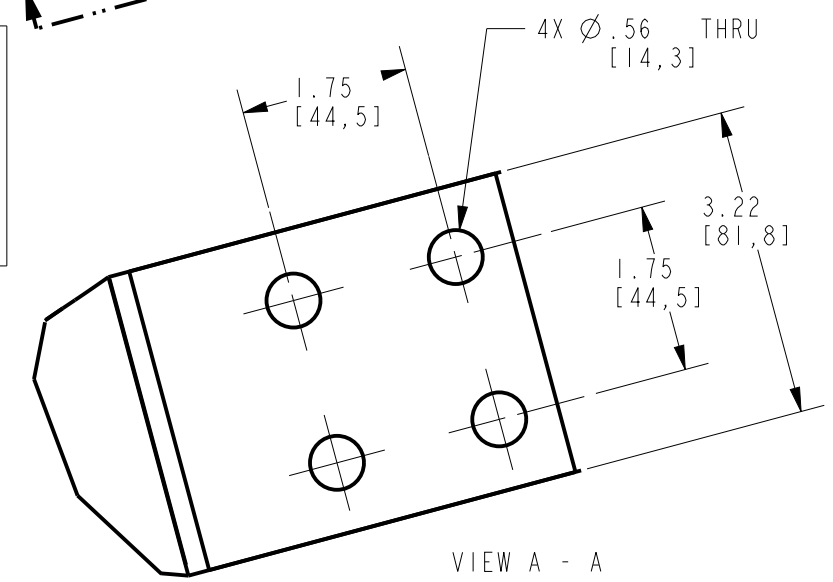
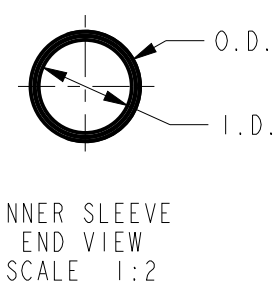
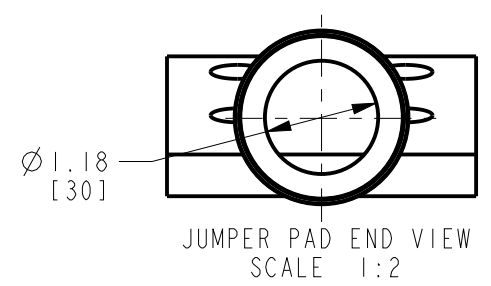
ITEM NUMBER	CATALOG NUMBER	CONTAINS HARDWARE KIT CAT#	ACCOMMODATES ACCC™ CONDUCTOR				ACCOMMODATES OTHER CONDUCTOR	CTC NUMBER	O.D.	I.D.	APPROXIMATE NOMINAL WEIGHT
			CODE WORD	SIZE	NOMINAL LOAD	MAX CURRENT					
10106485	BYNA160MM2T15HACCC	TMH24	HELSINKI JAIPUR	160mm <sup>2</sup>	--	--	--	600-253-2	1.14 [29]	.72 [18]	2 LBS [1 KG]
10106484	BYNA160MM2T15ACCC	--		165mm <sup>2</sup>							
10101768	BYNA245MM2T15HACCC	TMH24	COPENHAGEN REYKJAVIK & GLASGOW CASABLANCA	230mm <sup>2</sup>	23000 LBS [102 KN]	--	--	600-253-1	1.14 [29]	.85 [22]	2 LBS [1 KG]
10101764	BYNA245MM2T15ACCC	--		235mm <sup>2</sup>							
10094205	BYNA325MM2T15HACCC	TMH24		245mm <sup>2</sup>							
10098133	BYNA325MM2T15ACCC	--		285mm <sup>2</sup>							
			LISBON & OSLO & AMSTERDAM	325mm <sup>2</sup>	--	--	METRIC ACSR 265/35	600-253-4		.97 [25]	2 LBS [1 KG]
				330mm <sup>2</sup>							
				380mm <sup>2</sup>							

5 CATALOG NO. TMH24 HARDWARE KIT CONSIST OF	
QTY.	DESCRIPTION
4	BOLT, HEX HEAD 1/2"-13 X 2" LONG
4	HEX NUT, 1/2"-13
4	FLAT WASHER 1/2"
4	RESILIENT WASHER 1/2"



- NOTES:
- EXPLODED VIEW OF JUMPER PAD AND SLEEVE
- MATERIAL:
    - CONNECTOR, ALUMINUM ALLOY, NO-OX-ID COATED
    - ALUMINUM FILLER PLUG
    - TMH24 HARDWARE
      - BOLTS (2024T4), NUTS (6061 T6) AND FLAT WASHERS, ALUMINUM ALLOY
      - RESILIENT WASHERS, GALVANIZED STEEL
  - DIMENSIONS IN BRACKETS [ ] DENOTE METRIC UNITS [SI UNITS] AND ARE ROUNDED TO THE NEAREST WHOLE NUMBER. UNLESS OTHERWISE SPECIFIED THESE UNITS SHALL BE USED FOR REFERENCE ONLY.
  - DESIGNED FOR CORONA FREE OPERATION TO 230 KV NO ACCESSORIES REQUIRED.
  - CONNECTOR SHALL BE SHIPPED UN-ASSEMBLED.
  - RECOMMENDED TIGHTENING TORQUE: 1/2-13 ALUMINUM HARDWARE: 300 LBS-IN [34 NM].
  - REFERENCE: 10092621, CONNECTOR INSTALLATION MUST APPLY PENETROX™ HT OXIDE INHIBITING JOINT COMPOUND ON CONDUCTOR AND O.D. OF INNER SLEEVE.
  - CATALOG NUMBERS FOR HYLUG™ WITHOUT HARDWARE ARE CATALOG NUMBERS WITHOUT "H".
  - REFERENCE: CONDUCTOR MANUFACTURER'S SPECIFICATION, MAXIMUM CURRENT (AT 200°C)
  - INSTALLATION TOOLING (NOT INCLUDED)  
DIE SET L725, TOOL Y60BHU OR Y60BHU-D HYDRAULIC HYPRESS

BURNDY  
BYNA325MM2T15ACCC  
CTC NO. 600-253-4  
LISBON, OSLO, AMSTERDAM ACCC  
METRIC ACSR 265/35  
USE BURNDY DIE 725  
OVERLAP CRIMPS  
CRIMP DIRECTION →



TO ORDER BURNDY® PRODUCTS CALL  
UNITED STATES:  
1-800-346-4175 (LONDONDERRY, NH)

CANADA:  
1-800-361-6975 (QUEBEC)  
1-800-387-6487 (ALL OTHER PROVINCES)

FOR PRODUCT INFO: <http://www.burndy.com>

HYLUG™ TERMINAL PAD ASSEMBLY (ACCC®)

ITEM NO: SEE TABLE  
CAT. NO: SEE TABLE

DRAWN BY: D DOBRINSKI	10/29/09
CHECKER: P CHAN	03/03/09
DSN APPVL: P CHAN	02/22/13
MFG APPVL: J HEAD	02/22/13
QA APPVL: T WATTS	02/22/13
MKT APPVL: D HAMILTON	02/22/13

SCALE: 1:2

PROJ FAM: TRANSMISSION	DRAWING NO	REV
PROJECT #:	SIZE	
DOCUMENT TYPE: Sales	10097505	F
REL LEVEL: Released	B	SHEET 1 OF 1

**BURNDY**

REV: PE0200