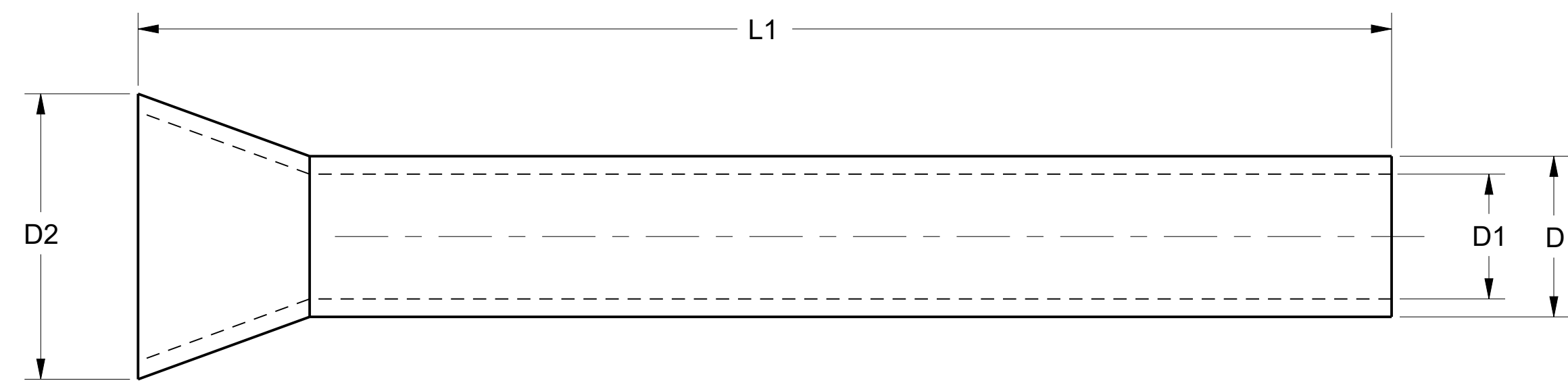


CATALOG NO.	CONDUCTOR		L1	D	D1	D2 MAX	RECOMMENDED TOOLING	CATALOG NO.	CONDUCTOR		L1	D	D1	D2 MAX	RECOMMENDED TOOLING	REV	DATE	DESCRIPTION	ECO	BY	CHK.
	AWG	MM <sup>2</sup>							AWG	MM <sup>2</sup>											
YF2807UI	28	.14	.276 [7.0]	.0354 [0.9]	.0275 [0.7]	.079 [2.0]	YF3206TOOL	YF0812UI	8	10	.472 [12.0]	.193 [4.9]	.177 [4.5]	.248 [6.3]	YF3206TOOL YF1006TOOL YF0801TOOL	D					
YF2605UI	26	.25	.196 [5.0]	.043 [1.1]	.031 [0.8]	.079 [2.0]	YF3206TOOL	YF0815UI	8	10	.591 [15.0]	.193 [4.9]	.177 [4.5]	.248 [6.3]							
YF2607UI	26	.25	.276 [7.0]	.043 [1.1]	.031 [0.8]	.079 [2.0]	YF3206TOOL	YF0818UI	8	10	.709 [18.0]	.193 [4.9]	.177 [4.5]	.248 [6.3]							
YF2405UI	24	.34	.196 [5.0]	.0472 [1.2]	.031 [0.8]	.079 [2.0]	YF2610TOOL	YF0612UI	6	16	.472 [12.0]	.244 [6.2]	.228 [5.8]	.303 [7.7]							
YF2407UI	24	.34	.276 [7.0]	.0472 [1.2]	.031 [0.8]	.079 [2.0]	YF2610TOOL	YF0615UI	6	16	.591 [15.0]	.244 [6.2]	.228 [5.8]	.303 [7.7]							
YF2206UI	22	.50	.240 [6.0]	.052 [1.0]	.041 [1.0]	.087 [2.2]		YF0618UI	6	16	.709 [18.0]	.244 [6.2]	.228 [5.8]	.303 [7.7]							
YF2208UI	22	.50	.315 [8.0]	.051 [1.3]	.039 [1.0]	.087 [2.2]		YF0625UI	6	16	.984 [25.0]	.244 [6.2]	.228 [5.8]	.303 [7.7]							
YF2210UI	22	.50	.401 [10.0]	.052 [1.0]	.040 [1.0]	.087 [2.2]		YF0412UI	4	25	.472 [12.0]	.311 [7.9]	.295 [7.5]	.378 [9.6]							
YF2212UI	22	.50	.472 [12.0]	.051 [1.3]	.039 [1.0]	.087 [2.2]		YF0415UI	4	25	.591 [15.0]	.311 [7.9]	.295 [7.5]	.378 [9.6]							
YF2006UI	20	.75	.236 [6.0]	.059 [1.5]	.047 [1.2]	.095 [2.4]		YF0418UI	4	25	.704 [17.9]	.311 [7.9]	.295 [7.5]	.378 [9.6]							
YF2010UI	20	.75	.394 [10.0]	.059 [1.5]	.047 [1.2]	.095 [2.4]		YF0420UI	4	25	.787 [20.0]	.311 [7.9]	.295 [7.5]	.378 [9.6]							
YF2012UI	20	.75	.472 [12.0]	.059 [1.5]	.047 [1.2]	.095 [2.4]		YF0425UI	4	25	.984 [25.0]	.311 [7.9]	.295 [7.5]	.378 [9.6]							
YF1806UI	18	1.00	.237 [6.0]	.067 [2.0]	.056 [1.0]	.107 [2.7]		YF0432UI	4	25	1.26 [32.0]	.311 [7.9]	.295 [7.5]	.378 [9.6]							
YF1808UI	18	1.00	.315 [8.0]	.067 [1.7]	.055 [1.4]	.107 [2.7]	YF3206TOOL	YF0215UI	2	35	.591 [15.0]	.343 [8.7]	.327 [8.3]	.422 [10.7]							
YF1810UI	18	1.00	.394 [10.0]	.067 [1.7]	.055 [1.4]	.107 [2.7]	YF2610TOOL	YF0220UI	2	35	.787 [20.0]	.343 [8.7]	.327 [8.3]	.422 [10.7]							
YF1812UI	18	1.00	.472 [12.0]	.067 [1.7]	.055 [1.4]	.107 [2.7]	YF2210TOOL	YF0225UI	2	35	.984 [25.0]	.343 [8.7]	.327 [8.3]	.422 [10.7]							
YF1607UI	16	1.50	.276 [7.0]	.079 [2.0]	.067 [1.7]	.118 [3.0]		YF0232UI	2	35	1.26 [32.0]	.343 [8.7]	.327 [8.3]	.422 [10.7]							
YF1608UI	16	1.50	.315 [8.0]	.079 [2.0]	.067 [1.7]	.118 [3.0]		YF0118UI	1	50	.709 [18.0]	.429 [10.9]	.406 [10.3]	.520 [13.2]							
YF1610UI	16	1.50	.392 [10.0]	.084 [2.0]	.072 [2.0]	.118 [3.0]		YF0122UI	1	50	.866 [22.0]	.429 [10.9]	.406 [10.3]	.520 [13.2]							
YF1612UI	16	1.50	.471 [12.0]	.084 [2.0]	.065 [2.0]	.118 [3.0]		YF0125UI	1	50	.984 [25.0]	.429 [10.9]	.406 [10.3]	.520 [13.2]							
YF1618UI	16	1.50	.709 [18.0]	.079 [2.0]	.067 [1.7]	.118 [3.0]		YF0132UI	1	50	1.26 [32.0]	.429 [10.9]	.406 [10.3]	.520 [13.2]							
YF1407UI	14	2.50	.276 [7.0]	.102 [2.6]	.091 [2.3]	.150 [3.8]		YF1/020UI	1/0	50	.79 [20.0]	.452 [11.5]	.429 [10.9]	.511 [13.0]							
YF1408UI	14	2.50	.315 [8.0]	.102 [2.6]	.091 [2.3]	.150 [3.8]		YF1/030UI	1/0	50	1.18 [30.1]	.452 [11.5]	.429 [10.9]	.511 [13.0]							
YF1410UI	14	2.50	.392 [10.0]	.103 [3.0]	.091 [2.0]	.150 [3.8]		YF2/022UI	2/0	70	.866 [22.0]	.532 [13.5]	.503 [12.8]	.642 [16.3]							
YF1412UI	14	2.50	.472 [12.0]	.102 [2.6]	.091 [2.3]	.150 [3.8]		YF2/025UI	2/0	70	.984 [25.0]	.532 [13.5]	.503 [12.8]	.642 [16.3]							
YF1418UI	14	2.50	.709 [18.0]	.102 [2.6]	.091 [2.3]	.150 [3.8]		YF2/032UI	2/0	70	1.26 [32.0]	.532 [13.5]	.503 [12.8]	.642 [16.3]							
YF1209UI	12	4.00	.354 [9.0]	.126 [3.2]	.110 [2.8]	.174 [4.4]	YF3206TOOL	YF3/025UI	3/0	95	.984 [25.0]	.614 [15.6]	.583 [14.8]	.642 [16.3]							
YF1212UI	12	4.00	.473 [12.0]	.127 [3.0]	.111 [3.0]	.174 [4.4]	YF2610TOOL	YF3/030UI	3/0	95	1.18 [30.0]	.614 [15.6]	.583 [14.8]	.642 [16.3]							
YF1215UI	12	4.00	.591 [15.0]	.126 [3.2]	.110 [2.8]	.174 [4.4]	YF2210TOOL	YF3/032UI	3/0	95	1.26 [32.0]	.614 [15.6]	.583 [14.8]	.642 [16.3]							
YF1218UI	12	4.00	.709 [18.0]	.126 [3.2]	.110 [2.8]	.174 [4.4]		YF4/032UI	4/0	120	1.26 [32.0]	.697 [17.7]	.657 [16.7]	.768 [19.5]							
YF1010UI	10	6.00	.388 [10.0]	.154 [4.0]	.139 [4.0]	.205 [5.2]	YF3206TOOL	YF4/034UI	4/0	120	1.34 [34.0]	.697 [17.7]	.657 [16.7]	.768 [19.5]							
YF1012UI	10	6.00	.472 [12.0]	.154 [3.9]	.138 [3.8]	.205 [5.2]	YF2610TOOL	YF4/040UI	4/0	120	1.57 [40.0]	.697 [17.7]	.657 [16.7]	.768 [19.5]							
YF1015UI	10	6.00	.591 [15.0]	.154 [3.9]	.138 [3.8]	.205 [5.2]	YF2210TOOL	YF25032UI	250 kcmil	150	1.26 [32.0]	.811 [20.6]	.773 [19.6]	.926 [23.5]							
YF1018UI	10	6.00	.709 [18.0]	.154 [3.9]	.138 [3.8]	.205 [5.2]	YF1006TOOL	YF25040UI	250 kcmil	150	1.57 [40.0]	.811 [20.6]	.773 [19.6]	.926 [23.5]							
								YF35032UI	350 kcmil	185	1.257 [32.0]	.844 [21.0]	.794 [20.0]	.961 [24.4]							
								YF35040UI	350 kcmil	185	1.57 [40.0]	.843 [21.4]	.795 [20.2]	.961 [24.4]							
								YF40040UI	400 kcmil	240	1.57 [40]	.89 [23]	.85 [22]	.94 [24]							
														Y644HSXT							
														--							



- NOTES:
- MATERIAL: COPPER ALLOY
  - DIMENSIONS IN [ ] BRACKETS ARE IN MILLIMETERS, ROUNDED OFF TO THE NEAREST 0.1 MILLIMETERS, UNLESS OTHERWISE NOTED. METRIC DIMENSIONS ARE FOR REFERENCE ONLY.

TO ORDER BURNDY® PRODUCTS CALL UNITED STATES 1-800-346-4175 (LONDONDERRY, NH)  CANADA: 1-800-361-6975 (QUEBEC) 1-800-387-6487 (ALL OTHER PROVINCES) FOR PRODUCT INFO: <a href="http://www.burndy.com">http://www.burndy.com</a>	FERRULE		
	ITEM NO:	N/A	
	CAT. NO:	YF UI	
	DRAWN BY:	N.D.KANNAN	02/26/2009
	CHECKER:	K BOUTIN	02/26/09
	DSN APPVL:	K BOUTIN	02/26/09
	MFG APPVL:	--	
	QA APPVL:	C ACKERMAN	02/26/09
	MKT APPVL:	R CAVANAUGH	02/26/09
	PROD FAM:	CM&R Compression	DRAWING NO
PROJECT #:	FOCUS	SIZE	
DOCUMENT TYPE:	Sales	10098190	
REL LEVEL:	Released	D	
		SHEET 1 OF 1	

REV: PE0200