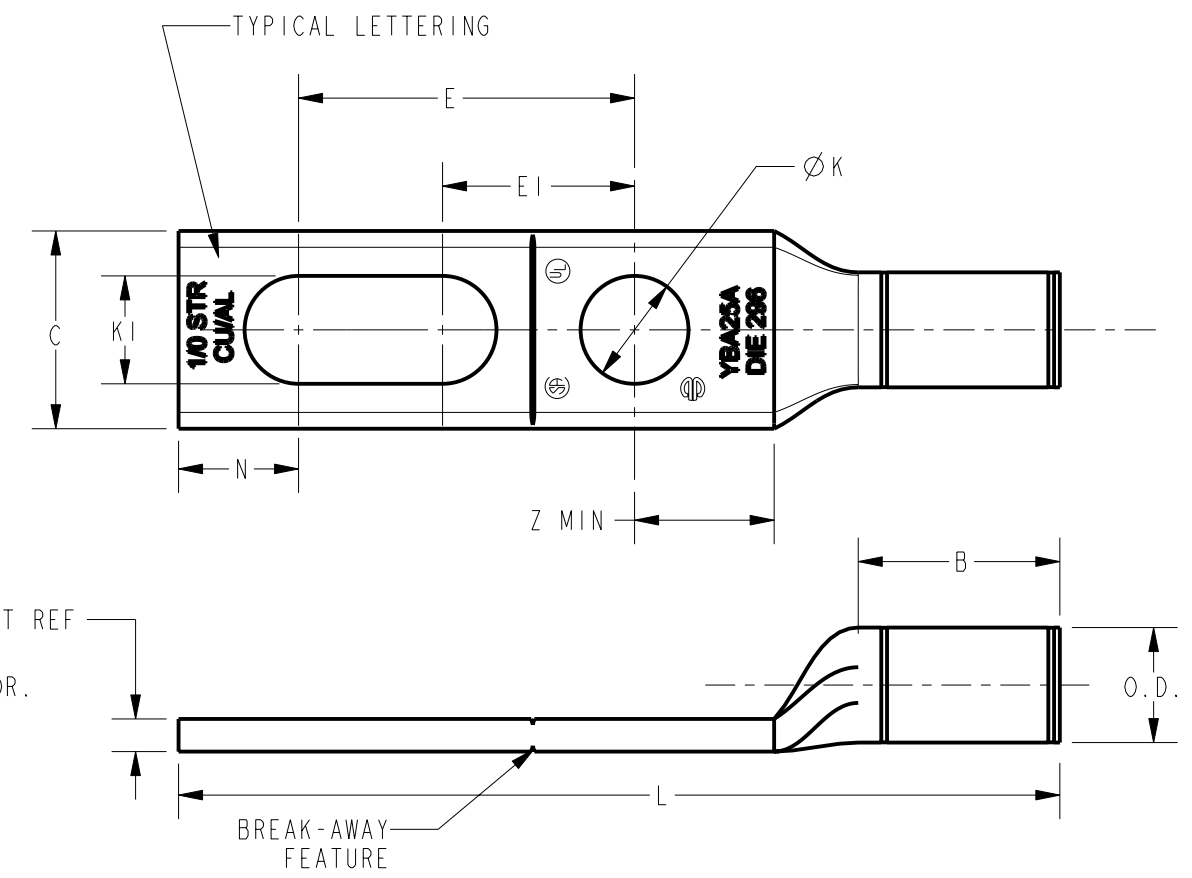


CATALOG NUMBER	ITEM NUMBER	CONDUCTOR		STUD HOLE SIZE	DIMENSIONS										INSTALLATION TOOLING (# CRIMPS)										
		ALUMINUM CLASS B CONCENTRIC, COMPRESSED, COMPACT, SIW	COPPER CLASS B, C CONCENTRIC, COMPRESSED, COMPACT		B	C	E	EI	ØK	KI	L	N	O.D.	T REF	Z MIN	DIE INDEX	COLOR CODE	MECHANICAL			HYDRAULIC			DIELESS (# CRIMPS)	WIRE STRIP LENGTH
																		MD6, MD7 MD7-34R	OUR840	Y500CTHS PAT60018V PATMD6-14V	Y35, Y39 Y750, PAT750	Y46 PAT4618V	Y45		
YBA25A	10098300	1/0 AWG	1/0 AWG	1/2 [12]	1.05 [27]	1.03 [26]	1.75 [44]	1.00 [25]	.56 [14]	.56 [14]	4.59 [117]	.62 [16]	.60 [15]	.17 [4]	.64 [16]	296	TAN	W241 (2)	X241 (4)	W241 (2)	U25ART (1)	U25ART (1)	U25ART (1)	MECHANICAL: MY29-3 (2) HYDRAULIC: Y644 (1), PAT644 (1) Y81KFT (2), PAT81KFT (2) Y4PC834 (2), PAT4PC834 (2)	1-3/16
YBA26A	10098301	2/0 AWG	2/0 AWG	1/2 [12]	1.17 [30]	1.03 [26]	1.75 [44]	1.00 [25]	.56 [14]	.56 [14]	4.78 [121]	.62 [16]	.67 [17]	.20 [6]	.64 [16]	297	OLIVE	-----	-----	-----	U26ART (2)	U26ART (2)	U26ART (2)		1-5/16
YBA27A	10098302	3/0 AWG	3/0 AWG	1/2 [12]	1.31 [33]	1.04 [26]	1.75 [44]	1.00 [25]	.56 [14]	.56 [14]	5.02 [128]	.62 [16]	.76 [19]	.26 [7]	.64 [16]	467	RUBY	-----	-----	-----	U27ART (2)	U27ART (2)	U27ART (2)		1-7/16
YBA28A	10084287	4/0 AWG	4/0 AWG	1/2 [12]	1.39 [35]	1.17 [30]	1.75 [44]	1.00 [25]	.56 [14]	.56 [14]	5.19 [132]	.62 [16]	.85 [22]	.30 [8]	.64 [16]	298	WHITE	W660 (4)	X660 (8)	W660 (4)	U28ART (2)	U28ART (2)	U28ART (2)		1-1/2
YBA29A	10084288	250 Kcmil	250 Kcmil	1/2 [12]	1.45 [37]	1.26 [32]	1.75 [44]	1.00 [25]	.56 [14]	.56 [14]	5.28 [134]	.62 [16]	.92 [23]	.33 [8]	.64 [16]	324	RED	-----	-----	-----	U29ART [2]	U29ART [2]	U29ART [2]		1-5/8
YBA30A	10098303	4/0 AWG CCA DLO (329/22) 350 Kcmil	350 Kcmil	1/2 [12]	1.53 [39]	1.38 [35]	1.75 [44]	1.00 [25]	.56 [14]	.56 [14]	5.64 [143]	.62 [16]	1.01 [26]	.36 [9]	.64 [16]	470	BLUE	-----	-----	-----	U30ART [2]	U30ART [2]	U30ART [2]	1-11/16	

CONNECTOR SIZE	TOLERANCES									
	B	C	E	EI	K DIA	KI	L	N	O.D.	
-6C THRU -25	±.06	±.04	±.02	±.02	±.02	±.02	±.09	±.03	±.01	
-26 THRU -34	±.08	+ .04 - .06	±.02	±.02	±.02	±.02	±.12	±.03	±.01	
-35 AND UP	±.09	±.06	±.02	±.02	±.02	±.02	±.15	±.06	±.01	

- NOTES:
- MATERIAL: ALUMINUM TUBE.
 - FINISH: TIN PLATED.
 - REMOVE ALL EXCESS PENETROX™ FROM CONNECTOR AND ADJACENT CONDUCTOR PRIOR TO TAPING.
 - "UL" LISTED AND "CSA" CERTIFIED WIRE CONNECTORS RATED 90°C (AL9CU) FOR USE WITH COPPER OR ALUMINUM CONDUCTOR.
 - CONNECTOR BARRELS PREFILLED WITH PENETROX™.
 - DIMENSIONS IN BRACKETS [] ARE IN MILLIMETERS ROUNDED OFF TO THE NEAREST MILLIMETER, UNLESS OTHERWISE NOTED, AND ARE FOR REFERENCE ONLY.
 - CATALOG # PT6515 ADAPTOR IS REQUIRED TO USE "U" DIES IN Y45 SERIES TOOLS.
 - CATALOG # PUADP-1 ADAPTOR IS REQUIRED TO USE "U" DIES IN Y46 SERIES TOOLS.
 - Y35P3 INDENTOR ADAPTOR REQUIRED FOR "Y34PR" TYPE INDENTORS.
 - FOR USE BY CUSTOMERS THAT HAVE THIS HYPRESS™. NO NEW HYPRESSES™ ARE BEING PROCESSED.
 - UL LISTED WITH DLO COPPER CLAD ALUMINUM CONDUCTOR USING Y644 TOOLS ONLY.



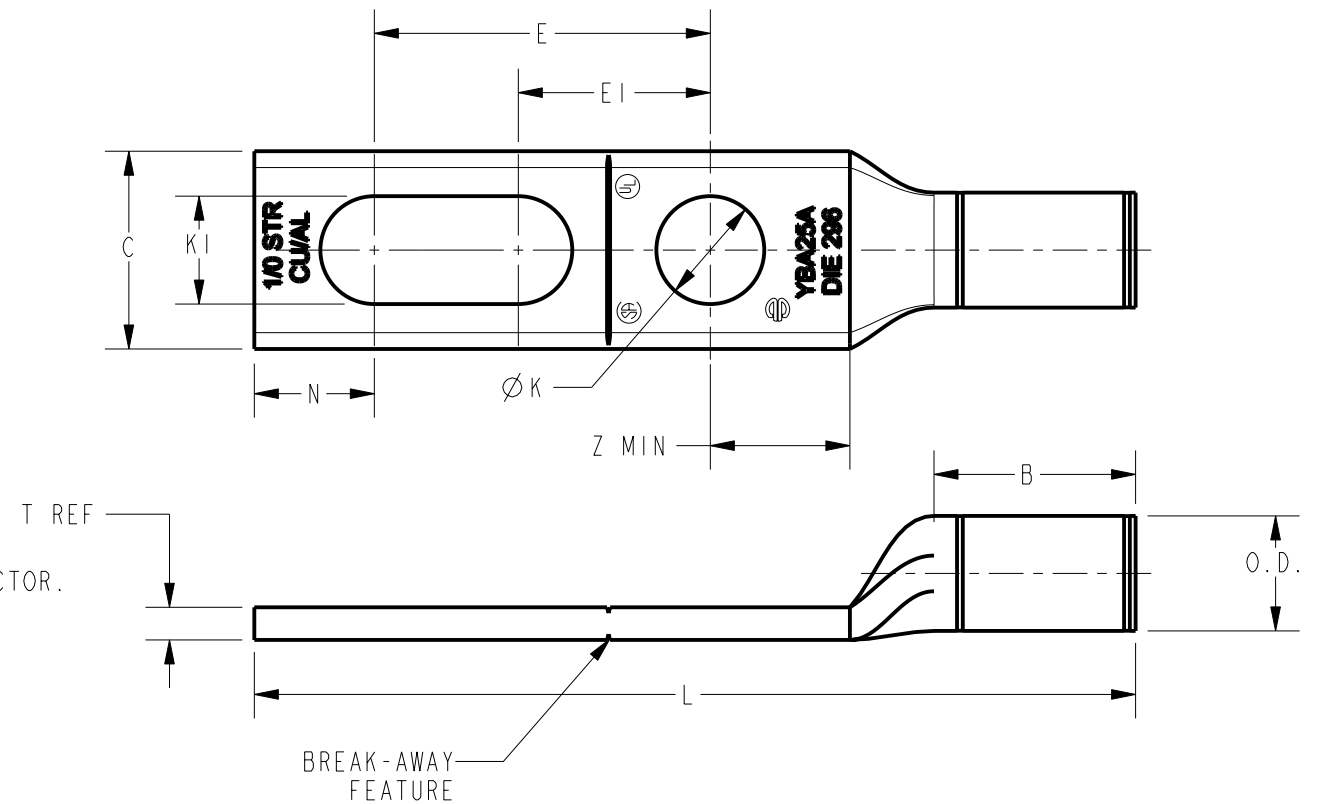
TO ORDER BURNDY® PRODUCTS CALL		BREAK-AWAY LUGS (ALUMINUM)	
UNITED STATES: 1-800-346-4175 (LONDONDERRY, NH)		ITEM NO: SEE TABLE	
CANADA: 1-800-361-6975 (QUEBEC) 1-800-387-6487 (ALL OTHER PROVINCES)		CAT. NO: SEE TABLE	
FOR PRODUCT INFO: http://www.burndy.com		DRAWN BY: A MONTMINY 05/28/2009	
		CHECKER: J MICHAUD 06/11/2009	
		DSN APPVL: A MONTMINY 06/16/2009	
		MFG APPVL: --	
		QA APPVL: T WATTS 06/16/2009	
		MKT APPVL: J SYLVIA 06/16/2009	
		SCALE: 1:1	
		PROD FAM: BREAK-AWAY LUGS	
		PROJECT #: EPI3902	
		SIZE: B	
		DRAWING NO: 10099461	
		REVISION: D	
		SHEET 1 OF 2	

REV: PE0200

CATALOG NUMBER	ITEM NUMBER	CONDUCTOR		STUD HOLE SIZE	DIMENSIONS											INSTALLATION TOOLING (# CRIMPS)						
		ALUMINUM CLASS B CONCENTRIC, COMPRESSED, COMPACT, SIW	COPPER CLASS B, C CONCENTRIC, COMPRESSED, COMPACT		B	C	E	EI	ØK	KI	L	N	O.D	T REF	Z MIN	DIE INDEX	COLOR CODE	HYDRAULIC			DIELESS (# CRIMPS)	WIRE STRIP LENGTH
																		Y35, Y39 Y750, PAT750	Y46 PAT4618V	Y45		
YBA31A	10098304	250 Kcmil CCA DLO (399/22) 350 Kcmil	350 Kcmil	1/2 [12]	1.85 [47]	1.52 [39]	1.75 [44]	1.00 [25]	.56 [14]	.56 [14]	6.07 [154]	.62 [16]	1.10 [28]	.39 [10]	.64 [16]	299	BROWN	U31ART (2)	U31ART (2)	U31ART (2)	HYDRAULIC: Y644 (1), PAT644 (1) Y81KFT (4), PAT81KFT (4) Y4PC834 (4), PAT4PC834 (4)	2"
YBA32A	10098305	400 Kcmil	400 Kcmil	1/2 [12]	2.26 [57]	1.62 [41]	1.75 [44]	1.00 [25]	.56 [14]	.56 [14]	6.15 [156]	.62 [16]	1.19 [30]	.43 [11]	.64 [16]	472	GREEN	U32ART (4)	U32ART (4)	U32ART (2)		2-3/8
YBA34A	10098306	350 Kcmil CCA DLO (551/22) 500 Kcmil	500 Kcmil	1/2 [12]	2.34 [59]	1.62 [41]	1.75 [44]	1.00 [25]	.56 [14]	.56 [14]	6.80 [173]	.62 [16]	1.31 [33]	.46 [12]	.64 [16]	300	PINK	U34ART (4)	U34ART (4)	U34ART (4)		2-1/2
YBA36A	10098307	500 Kcmil CCA DLO (779/22) 600 Kcmil	600 Kcmil	1/2 [12]	2.47 [63]	1.31 [33]	1.75 [44]	1.00 [25]	.56 [14]	.56 [14]	7.09 [180]	.62 [16]	1.44 [37]	.52 [13]	.64 [16]	473	BLACK	U36ART (4)	U36ART (4)	U36ART (4)		2-5/8
YBA39A	10084289	600 Kcmil CCA DLO (925/22) 700 Kcmil 750 Kcmil	700 Kcmil 750 Kcmil	1/2 [12]	2.46 [62]	1.62 [41]	1.75 [44]	1.00 [25]	.56 [14]	.56 [14]	7.07 [180]	.62 [16]	1.46 [37]	.43 [11]	.64 [16]	936	YELLOW	U39ART-2 [4]	U39ART-2 [4]	U39ART-2 [4]		2-7/8
YBA42A	50028164	900 KCMIL ALUMINUM ONLY WITH U42ART 600-900 KCMIL AL WITH Y644 OR 600 KCMIL CU WITH Y644		1/2 [12]	2.46 [62]	1.62 [41]	1.75 [44]	1.00 [25]	.56 [14]	.56 [14]	7.15 [182]	.62 [16]	1.50 [38]	.39 [10]	.64 [16]	303	GREY	U42ART (4)	U42ART (4)	U42ART (4)	Y644 (2), PAT644 (2)	--
YBA44A	10084290	750 OR 800 Kcmil CCA DLO (1184/22) (1258/22) 1000 Kcmil	1000 Kcmil	1/2 [12]	2.74 [70]	1.65 [42]	1.75 [44]	1.00 [25]	.56 [14]	.56 [14]	7.76 [197]	.62 [16]	1.84 [47]	.55 [14]	.64 [16]	302	BROWN	----	P44ART [4]	S44ART [4]	Y644MBH (1) ONLY	3"

CONNECTOR SIZE	TOLERANCES									
	B	C	E	EI	K DIA	KI	L	N	O.D.	
-6C THRU -25	±.06	±.04	±.02	±.02	±.02	±.02	±.09	±.03	±.01	
-26 THRU -34	±.08	+ .04 - .06	±.02	±.02	±.02	±.02	±.12	±.03	±.01	
-35 AND UP	±.09	±.06	±.02	±.02	±.02	±.02	±.15	±.06	±.01	

- NOTES:
- MATERIAL: ALUMINUM TUBE.
 - FINISH: TIN PLATED.
 - REMOVE ALL EXCESS PENETROX™ FROM CONNECTOR AND ADJACENT CONDUCTOR PRIOR TO TAPING.
 - "UL" LISTED AND "CSA" CERTIFIED WIRE CONNECTORS RATED 90°C (AL9CU) FOR USE WITH COPPER OR ALUMINUM CONDUCTOR.
 - CONNECTOR BARRELS PREFILLED WITH PENETROX™.
 - DIMENSIONS IN BRACKETS [] ARE IN MILLIMETERS ROUNDED OFF TO THE NEAREST MILLIMETER, UNLESS OTHERWISE NOTED, AND ARE FOR REFERENCE ONLY.
 - CATALOG # PT6515 ADAPTOR IS REQUIRED TO USE "U" DIES IN Y45 SERIES TOOLS.
 - CATALOG # PUADP-1 ADAPTOR IS REQUIRED TO USE "U" DIES IN Y46 SERIES TOOLS.
 - Y35P3 INDENTOR ADAPTOR REQUIRED FOR "Y34PR" TYPE INDENTORS.
 - FOR USE BY CUSTOMERS THAT HAVE THIS HYPRESS™. NO NEW HYPRESSES™ ARE BEING PROCESSED.
 - UL LISTED WITH DLO COPPER CLAD ALUMINUM CONDUCTOR USING Y644 TOOLS ONLY.



TO ORDER BURNDY® PRODUCTS CALL
 UNITED STATES:
 1-800-346-4175 (LONDONDERRY, NH)
 CANADA:
 1-800-361-6975 (QUEBEC)
 1-800-387-6487 (ALL OTHER PROVINCES)
 FOR PRODUCT INFO: <http://www.burndy.com>

BURNDY

BREAK-AWAY LUGS (ALUMINUM)
 ITEM NO: 10098292
 CAT. NO: SEE TABLE

DRAWN BY: A MONTMINY	05/28/2009
CHECKER: J MICHAUD	06/11/2009
DSN APPVL: A MONTMINY	06/16/2009
MFG APPVL: --	--
QA APPVL: T WATTS	06/16/2009
MKT APPVL: J SYLVIA	06/16/2009

SCALE: 1:1
 DRAWING NO: 10099461
 PROJECT #: EPI3902
 DOCUMENT TYPE: Sales
 REL LEVEL: Released

SHEET 2 OF 2

REV: PE0200