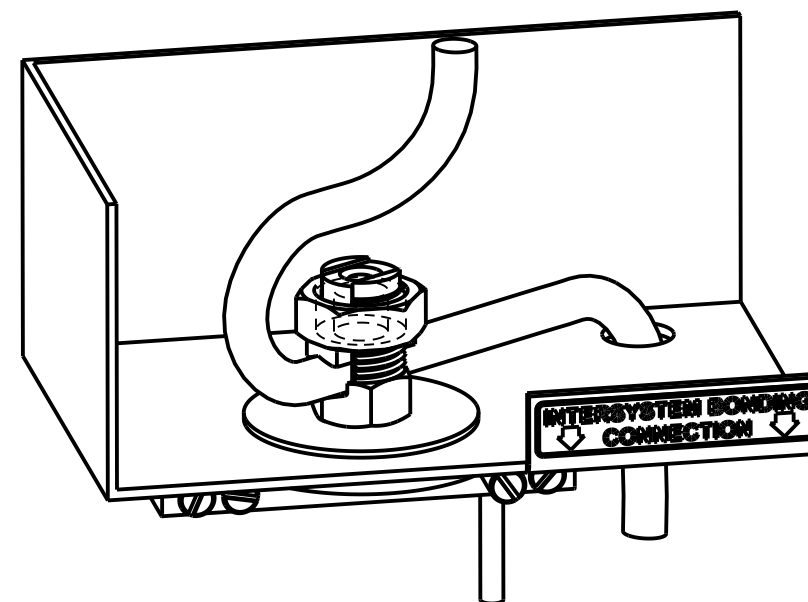
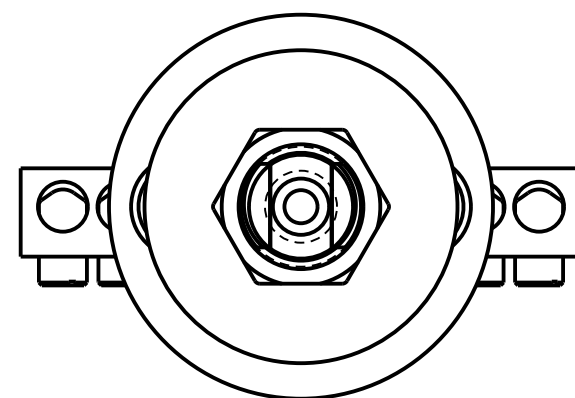


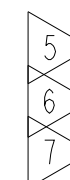
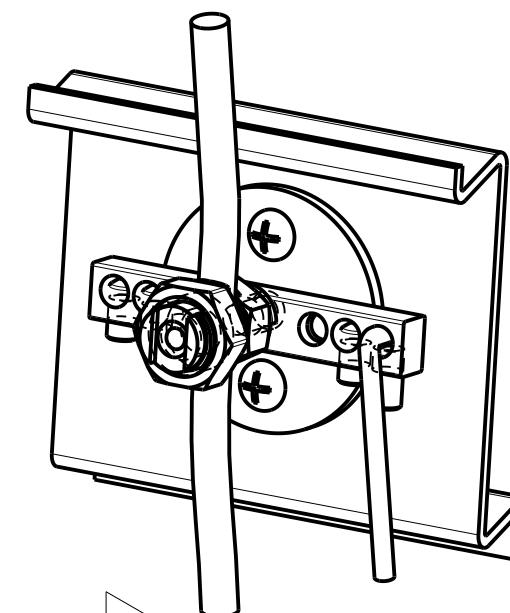
CAT. NO.	CONDUCTOR RANGE		REFERENCE DIMENSIONS			KNOCKOUT SIZE
	SERVIT POST™	BUS BAR	L	W	H	
BDT1	#8-#2 AWG	#14-#6 AWG	2.92 [74]	2.00 [51]	1.62 [41]	1/2"-3/4"

REV.	DATE	DESCRIPTION	ECO	BY	C.H.K.
D	04/27/2017 14:45:00 PM	LOGO UPDATION	46590	BK	MB

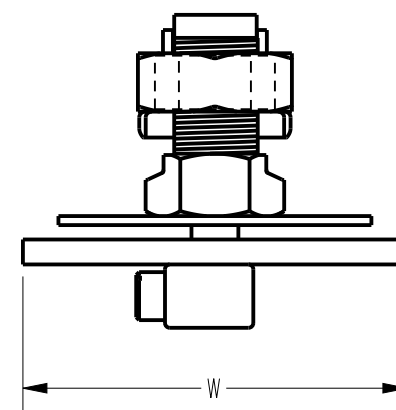
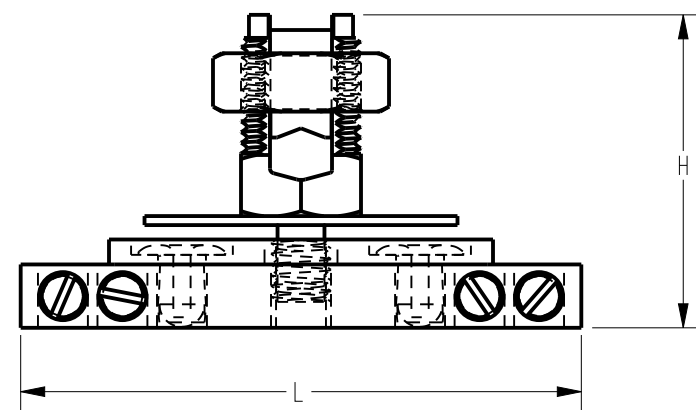
CONDUCTOR TORQUE RATING (IN-LB)		
WIRE	SERVIT POST™	BUS BAR
#14	-	20
#12	-	20
#10	-	20
#8	80	25
#6	165	35
#4	165	-
#2	275	-



CONFIGURATION 1



CONFIGURATION 2



NOTES:

- MATERIAL  
SERVIT POST™: COPPER  
BUS BAR: ALUMINUM  
SET SCREWS: ST. STEEL.
- UL LISTED TO UL467 SPECIFICATION FOR USA AND CANADA.
- DIMENSIONS IN BRACKETS[] ARE IN MILLIMETERS ROUNDED TO THE NEAREST MILLIMETER AND ARE FOR REFERENCE ONLY.
- ASSEMBLY INCLUDES SERVIT POST™, BUS BAR ASSEMBLY FASTENED WITH TWO RIVETS, AND 1-5/8" FENDER WASHER.
- FLAT WASHER NOT REQUIRED FOR CONFIGURATION 2.
- MOUNTING SCREWS FOR CONFIGURATION 2 ARE NOT INCLUDED.
- SPLIT LOCK WASHER INTENDED FOR USE IN CONFIGURATION 2 ONLY. (DO NOT USE IN CONFIGURATION 1)

TO ORDER BURNDY® PRODUCTS CALL		BONDIT INTERSYSTEM BONDING CONNECTOR	
UNITED STATES: 1-800-346-4175 (LONDONDERRY, NH)		ITEM NO: 10065725	
CANADA: 1-800-361-6975 (QUEBEC) 1-800-387-6487 (ALL OTHER PROVINCES)		CAT. NO: BDT1	
FOR PRODUCT INFO: <a href="http://www.burndy.com">http://www.burndy.com</a>		DRAWN BY: I. ANBALAGAN 05/22/09	
		CHECKER: P. WASON 07/15/09	
		DSN APPVL: P. WASON 04/16/09	
		MFG APPVL: D. HORNE 04/17/09	
		QA APPVL: J. BRODEUR 04/17/09	
		MKT APPVL: P. THERRIEN 04/17/09	
		SCALE: 1:1	
		DRAWING NO	
		REV	
		PROJECT #: --	
		SIZE	
		B	
		DOCUMENT TYPE: Sales	
		10100152	
		SHEET 1 OF 1	
		D	

REV: PE0200