

| REV. | DATE | DESCRIPTION | ECO | BY | C'H'K. |
|------|-------------------------|--|-------|----|--------|
| E | 2019-04-26 00:00:00 EDT | ADD YTW710MRE15ACK5 TO DRAWING 10102437 PER MARKUP | 51138 | MK | NJS |

BURNDY® PRODUCTS -FULL TENSION ACCC® DEADEND KITS

| DEADEND KIT (W/ALUM. HARDWARE) | | | ACCOMMODATES ACCC® CONDUCTOR | | KIT CONTAINS (REFERENCE SALES DWG) | | | | | INSTALLATION TOOLING (NOT INCLUDED) | | | | | |
|--------------------------------|------------------|---------|------------------------------|----------------------|------------------------------------|------------|--------------------------------|-------------------|------------|-------------------------------------|--|------------------------------|------|------|-------|
| ITEM NUMBER | CATALOG NUMBER | FIG NO. | CODE WORD | SIZE MM ² | DEADEND CONNECTOR (QTY. 1) | | TERMINAL WITH HARDWARE (ALUM.) | | | DEADEND ASSY. | | TOOLS, DIE SETS FOR TERMINAL | | | |
| | | | | | CATALOG NO. | SALES DWG. | QTY. | CATALOG NO. | SALES DWG. | DIE SET | TOOL | DIE INDEX | Y45 | Y46 | Y60 |
| 10102508 | YTW325MRE15ACK5 | 1 | LISBON | 325 | YTW325MREAC5 | 10102438 | 1 | BYNA36RT15HACCC | 10093976 | L727W | Y60BHU OR Y60BHU-D HYDRAULIC HYPRESS™ | 720 | S720 | P720 | L720W |
| 10102509 | YTW325MRED15ACK5 | 2 | | | YTW325MREDAC5 | | 2 | | | | | | | | |
| 50093417 | YTW235MRE15ACK5 | 1 | MONTE CARLO | 235 | YTW235MREAC5 | 50094043 | 1 | BYNA235MMT15HACCC | 50007105 | L735W | | 720 | S720 | P720 | L720W |
| 50023440 | YTW470MRE15ACK5 | 1 | STOCKHOLM | 470 | YTW470MREAC5 | 50024048 | 1 | BYNA45IRT15HACCC | 10093976 | L735W | | 725 | S725 | P725 | L725W |
| 5008108 4 | YTW545MRE15ACK5 | 1 | MAHAKAM | 545 | YTW545MREAC5 | 50024048 | 1 | BYNA590MRT15HACCC | 50081944 | L735W | | 727 | -- | -- | L727W |
| 50099872 | YTW710MRE15ACK5 | 1 | PRAGUE | 710 | YTW710MREAC5 | 50024048 | 1 | BYNA49RT15HACCC | 10093976 | L735W | | 727 | -- | -- | L727W |

NOTES:

- MATERIAL
 - CONNECTOR EYEBOLT, COLLET, AND COLLET HOUSING, STEEL ALLOY
 - CONNECTOR TUBE ASSEMBLY, INNER SLEEVE, AND TERMINAL, ALUMINUM ALLOY, NO-OX-ID COATED
 - HARDWARE BOLTS, FLAT WASHERS AND NUTS, ALUMINUM ALLOY
 - RESILIENT WASHERS, GALVANIZED STEEL
 - 4 oz BOTTLE OF PENETROX™ HT, RUBBER GASKET
- RECOMMENDED TIGHTENING TORQUE:
ALUMINUM HARDWARE: 1/2-13 300 LBS-IN [34 NM].
- DESIGNED FOR CORONA FREE OPERATION TO 230 KV FOR CORONA FREE OPERATION ABOVE 230 KV UP TO 550 KV SHIELDING CAPS. ARE REQUIRED - CONTACT FACTORY.
- CONNECTOR MARKED WITH MILAN ACCC (O.D. AND TOTAL CROSS SECTION = MAHAKAM ACCC)

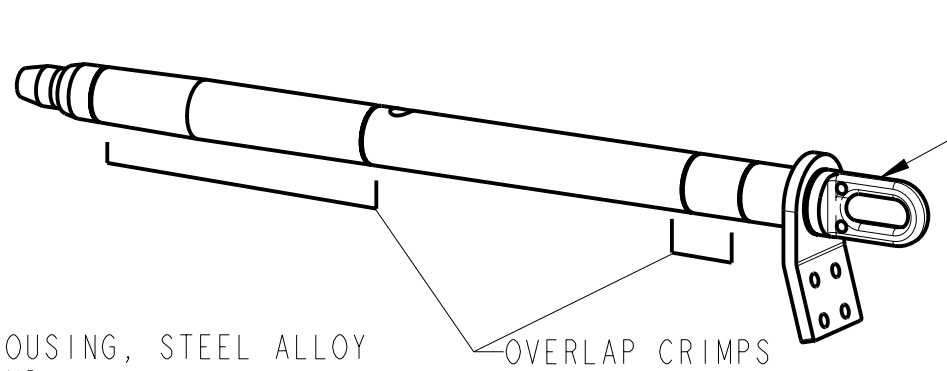
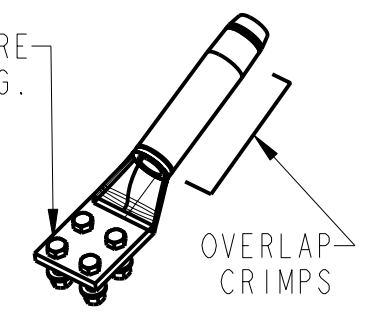


FIGURE 1
DEADEND CONNECTOR
SEE SALES DWG

TERMINAL WITH HARDWARE
SEE SALES DWG.



OVERLAP
CRIMPS

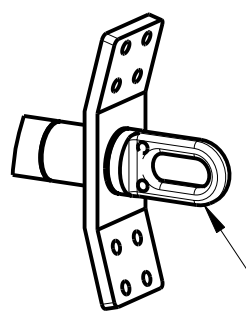


FIGURE 2
DEADEND CONNECTOR
SEE SALES DWG.

REFERENCE:
10092622, INSTALLATION INSTRUCTION
FOR TERMINAL
10102398, INSTALLATION INSTRUCTION
FOR DEAD END

(ACCC®) ALUMINUM CONDUCTOR COMPOSITE CORE

| | | | |
|---|--|--|--|
| TO ORDER BURNDY® PRODUCTS CALL | | FULL TENSION, METRIC ACCC® DEADEND KITS K5 | |
| UNITED STATES: 1-800-346-4175 (LONDONDERRY, NH) | | ITEM NO: SEE TABLE | |
| CANADA: 1-800-361-6975 (QUEBEC) 1-800-387-6487 (ALL OTHER PROVINCES) | | CAT. NO: SEE TABLE | |
| FOR PRODUCT INFO: http://www.burndy.com | | DRAWN BY: D DOBRINSKI 06/15/09 | |
| | | CHECKER: D BOUDREAU 04/26/19 | |
| | | DSN APPVL: D BOUDREAU 04/26/19 | |
| | | MFG APPVL: T.FOEHRING 04/11/19 | |
| | | QA APPVL: T.WATTS 04/09/19 | |
| | | MKT APPVL: R.LOVELESS 04/11/19 | |
| | | SCALE: 1:8 | |
| | | PROJECT #: -- | |
| | | DRAWING NO: 10102437 | |
| | | SHEET 1 OF 1 | |
| | | REV: E | |

REV: PE0200