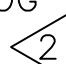

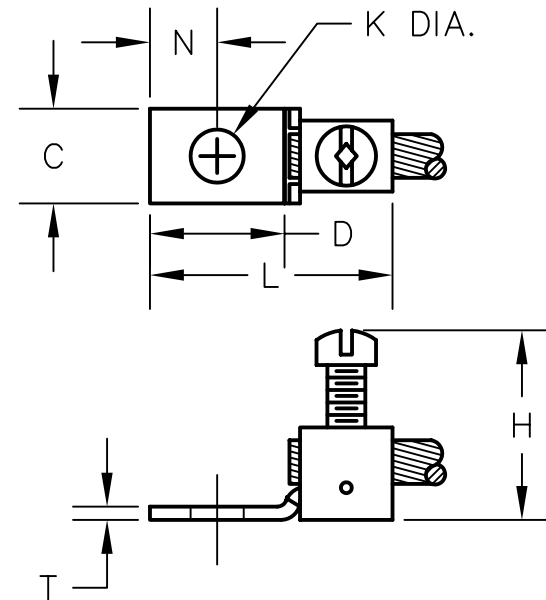





REV.	DATE	DESCRIPTION	ECO	BY	C'K'D.
B	06/16/09	UPDATE TO NEW SALES FORMAT PER M/U.	18364	RB	PL

CATALOG NO. 	CONDUCTOR	C	D	REF. H	K	L	N	T	RECOMMENDED TIGHTENING TORQUE IN. LBS. 	HARDWARE	STUD HOLE SIZE	QTY PACKAGE	WIRE STRIP LENGTH
KPA4CTPG2	14 SOL 1, 63 (.064 DIA.) 6 STR 5, 89 (.232 DIA.)	.50 [12]	.71 [80]	1.00 [25]	.28 [7]	1.28 [33]	.33 [8]	.07 [2]	5.1 NM (45 IN. LBS.)	5/16" DIA SLOT ROBERTSON STAINLESS STEEL SCREW	1/4"	100	9/16"



NOTES:

-  FINGER TIGHT TORQUE WITH MAXIMUM CONDUCTOR.
-  SUFFIX "TP" ON CATALOG NUMBER DENOTES TIN PLATE.
- 3. MATERIAL: COPPER ALLOY.
- 4. DIMENSIONS IN BRACKETS [ ] ARE IN MILLIMETERS. DIMENSIONS ARE ROUNDED OFF TO THE NEAREST MILLIMETER, UNLESS OTHERWISE NOTED, AND ARE FOR REFERENCE ONLY.

TO ORDER BURNDY® PRODUCTS CALL UNITED STATES: 1-800-346-4175 (LONDONDERRY, NH) CANADA: 1-800-361-6975 (QUEBEC) 1-800-387-6487 (ALL OTHER PROVINCES) FOR PRODUCT INFO: <a href="http://www.burndy.com">http://www.burndy.com</a>		SCRULUG™	
		ITEM NO: 000851	
		CAT NO: KPA4CTPG2	
		SCALE: 1/1	
		DRAWN BY: R. BOISVERT 06/14/01	
		CHECKER: P. LAPONIUS 06/15/01	
		DSN APPVL: J. MICHAUD 06/08/01	
		MFG APPVL: ---	
		QC APPVL: ---	
		MKT APPVL: D. WALTERS 06/12/01	DRAWING NO
		PROD FAM: ---	10102804
		PROJECT #: ---	SIZE
		DOCUMENT TYPE: Sales	B
		REL LEVEL: AutoCAD	SHEET 1 OF 1
			REV
			B