

DRAWING NO.
10103825

4

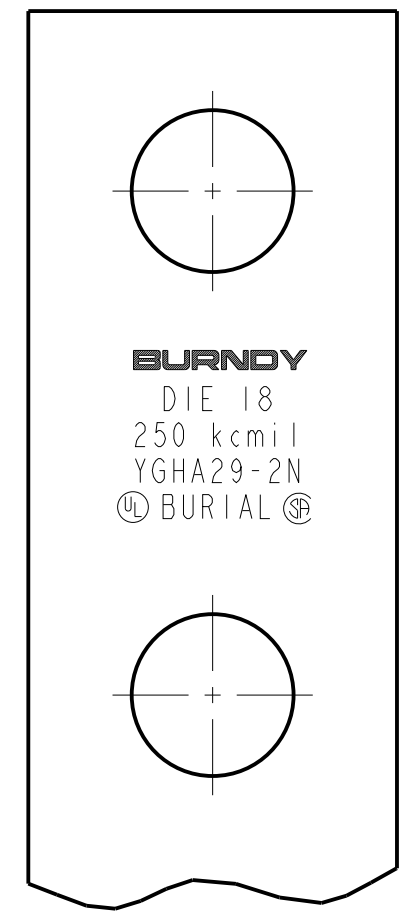
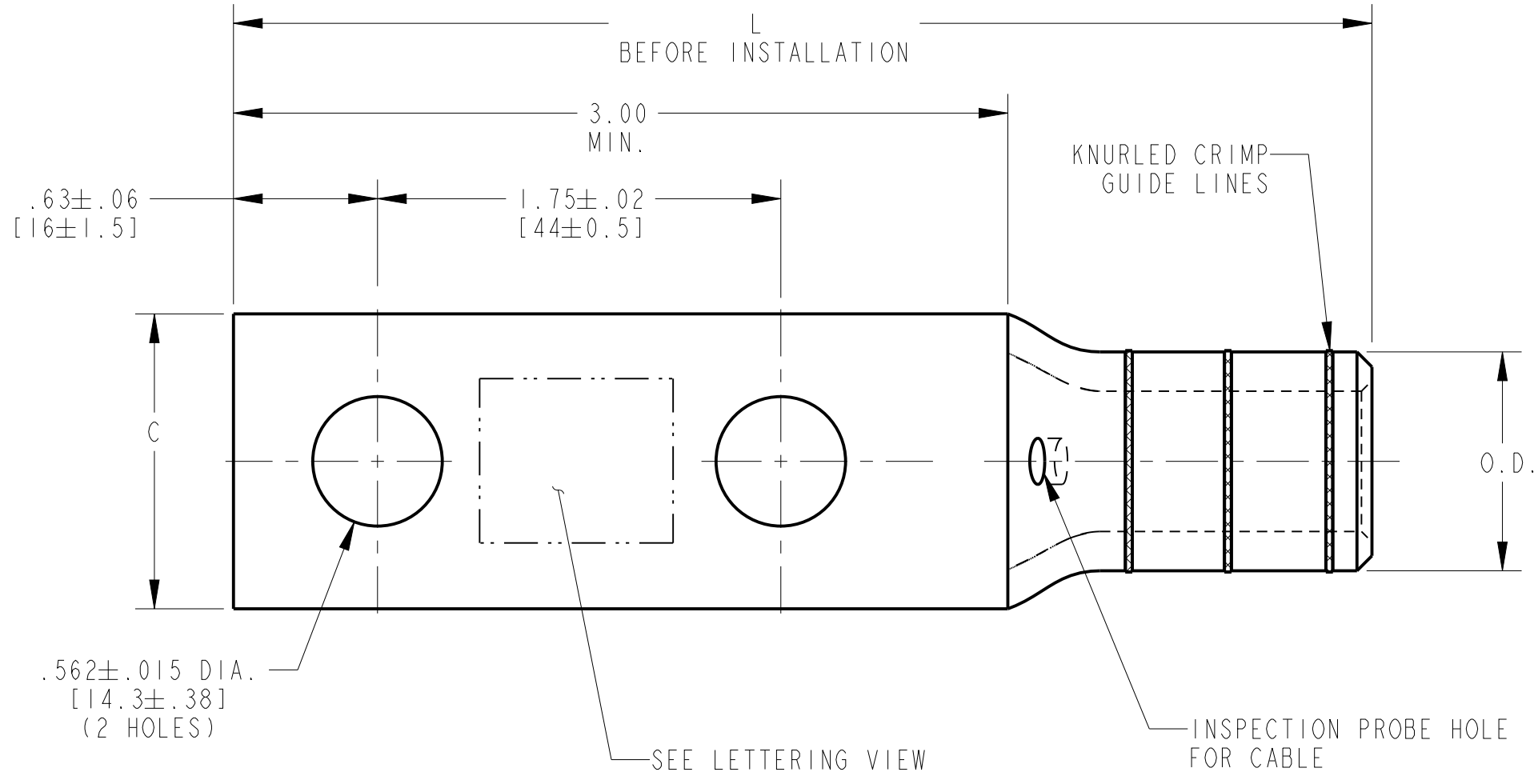
3

2

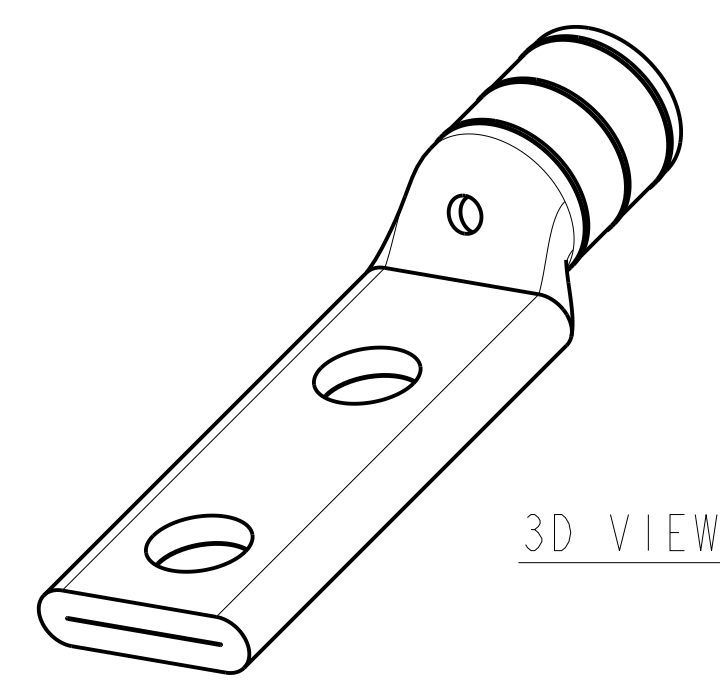
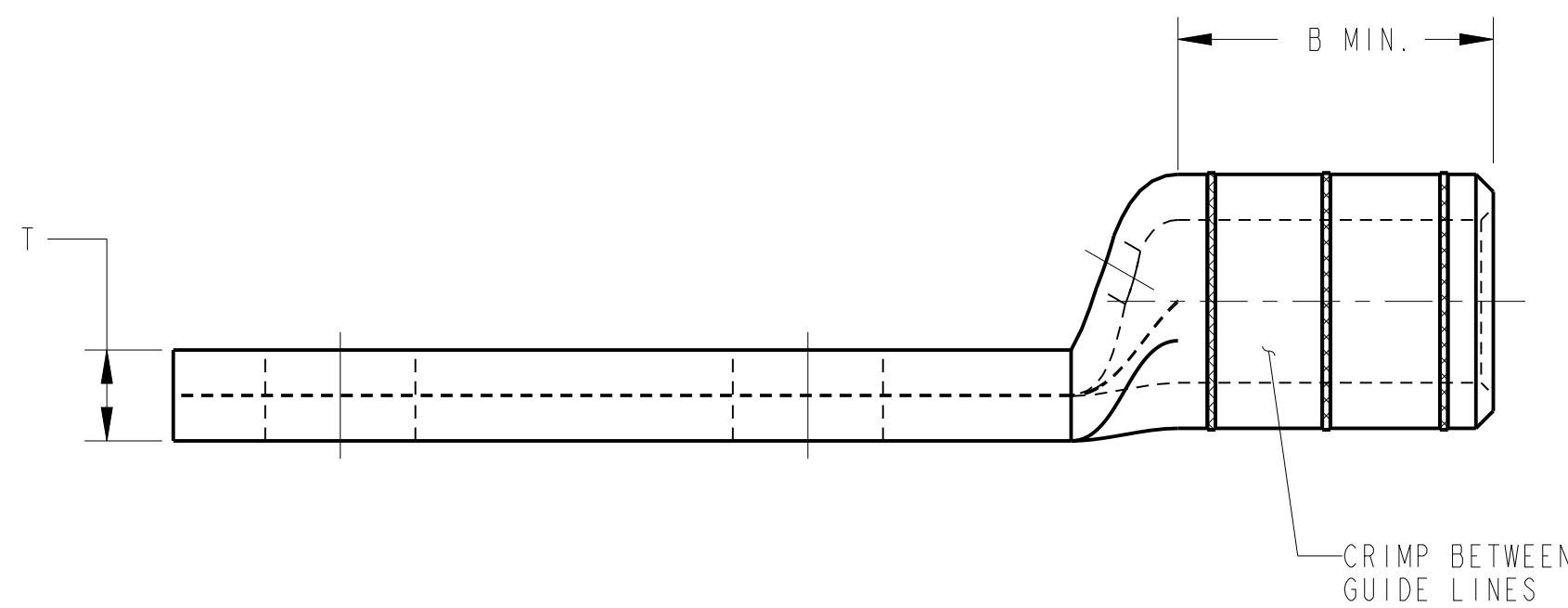
1

CATALOG NUMBER	COPPER CONDUCTOR		DIMENSIONS IN/mm					INSTALLATION DATA.		
	SIZE	STR.	B MIN.	C ±.08 [±2.0]	L ±.12 [±3.0]	O.D.	T	DIE INDEX NO.	HYPRESS™ Y35/Y39/Y45/Y46/Y750	NO. OF CRIMPS
YGHA292NTN	250 kcmil (.575 DIA) [120 mm ² (14.4 mm DIA.)]	7,19,37	1.18 [30]	1.28 [32]	4.94 [125]	.95 [24]	34 [9]	18	U3IRT	2

REV	DATE	DESCRIPTION	ECO	BY	C'H'K.
B	05/05/2017 22:00:00 PM	LOGO UPDATE	46674	BK	MB



LETTERING VIEW



NOTES:

- MATERIAL: COPPER.
- BARREL IS PREFILLED WITH PENETROX™ "E" AND INDIVIDUALLY SEALED.
- WHERE A "U" OR "PU" IS RECOMMENDED WITH THE Y45 HYPRESS™, A PT6515 ADAPTER MUST BE USED.
- WHERE A "U" OR "PU" IS RECOMMENDED WITH THE Y46 HYPRESS™, A PUADP-1 ADAPTER MUST BE USED.
- UL467 LISTED.
- LISTED UNDER UL486A FOR COPPER WIRE CONNECTORS.
- SUITABLE FOR DIRECT BURIAL IN EARTH OR CONCRETE.
- FINISH: TIN PLATED.
- DIMENSIONS IN BRACKETS [] ARE IN MILLIMETERS ROUNDED OFF TO THE NEAREST MILLIMETER, UNLESS OTHERWISE SPECIFIED, AND ARE FOR REFERENCE ONLY.

TO ORDER BURNDY® PRODUCTS CALL
UNITED STATES:
1-800-346-4175 (LONDONDERRY, NH)
CANADA:
1-800-361-6975 (QUEBEC)
1-800-387-6487 (ALL OTHER PROVINCES)
FOR PRODUCT INFO: <http://www.burndy.com>

HYLUG™ HEAVY DUTY, GROUND	
ITEM NO:	10072890
CAT. NO:	YGHA292NTN
DRAWN BY:	N.D.KANNAN 07/09/2009
CHECKER:	M. AYYAPPAN 07/09/2009
DSN APPVL:	--
MFG APPVL:	--
QA APPVL:	J. BRODEUR
MKT APPVL:	--
PROD FAM:	COMPRESSION GROUNDING
PROJECT #:	--
DOCUMENT TYPE:	Sales
REL LEVEL:	Released



DRAWING NO	REV	SCALE
10103825	B	1:500

4

3

2

1

REV: PE0200