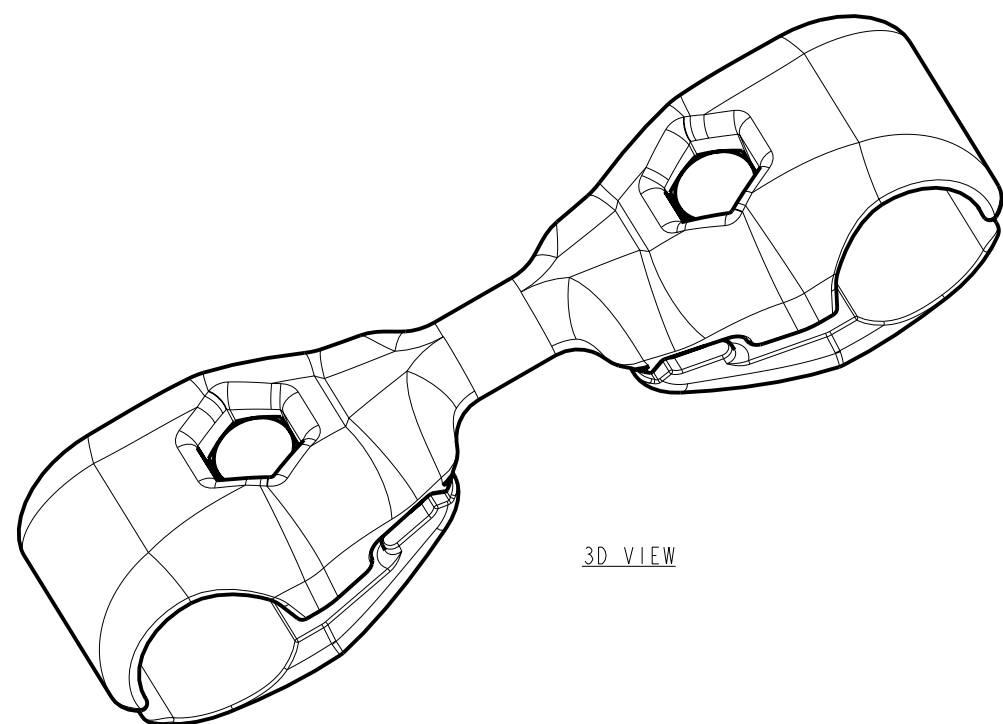
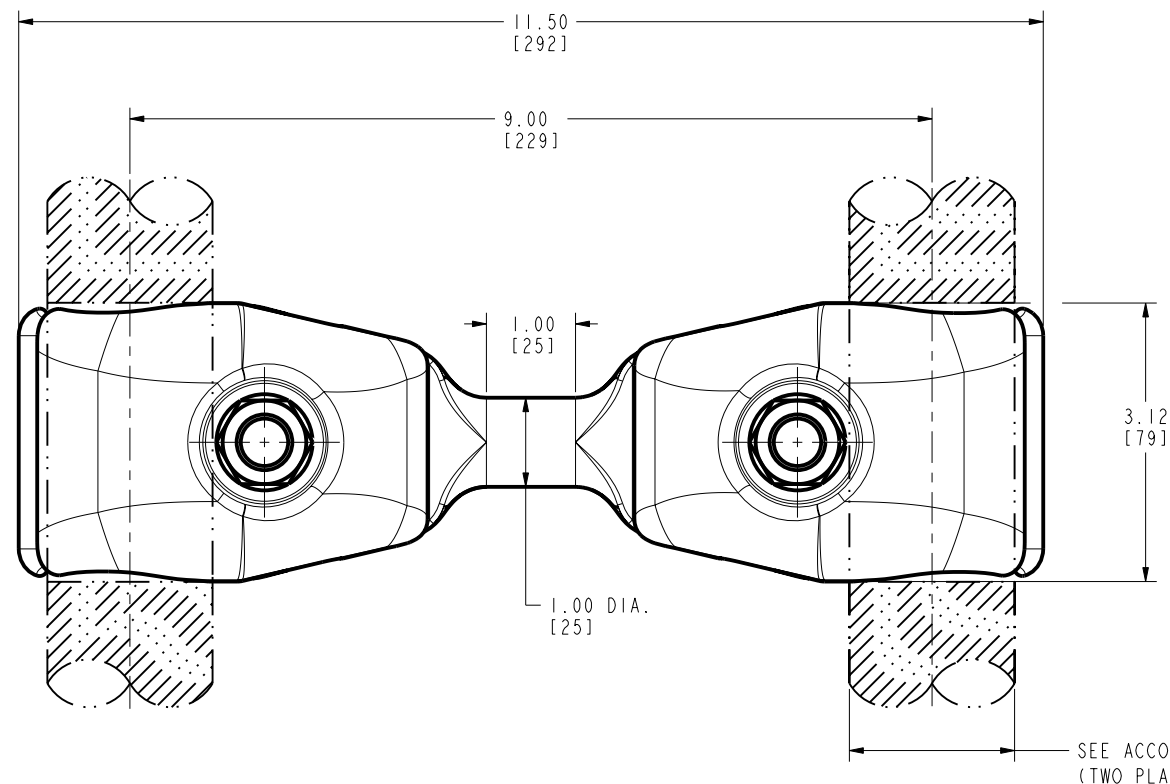


DRAWING NO.
10104968

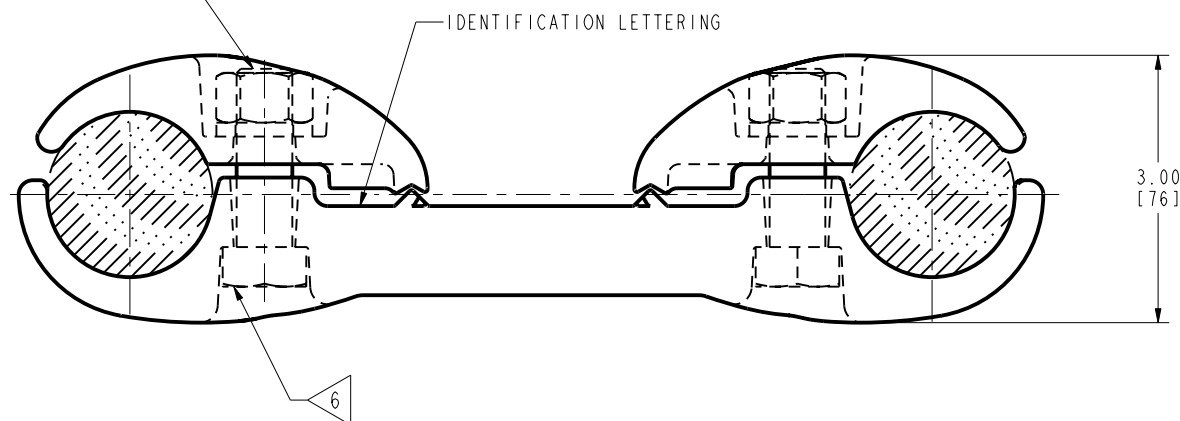
REV	DATE	DESCRIPTION	ECO	BY	C'H'K.
A	7/31/2009 12:00:00 AM	CREATED DRAWINGS AND BOM FOR S2GGBP486A9 FOCUS PROJECT	18457	AP	JH



3D VIEW



5/8-11 ALUMINUM ALLOY HEX. HEAD BOLTS AND NUTS WITH RESILIENT WASHERS (TWO PLACES)



NOTES:

- 1 MATERIAL:
BODY & CAP: CAST ALUMINUM ALLOY.
HARDWARE: ALUMINUM ALLOY.
- 2 ACCOMMODATES:
(2) 2167 Kcmil 72/7 STR.(1.737 DIA.) - 2156 Kcmil 84/19 STR. (1.762 DIA.) ACSR OR
(2) 2300 Kcmil 61 STR.(1.750 DIA.) - 2500 Kcmil 127 STR. (1.824 DIA.) AAC.
- 3 NOMINAL BOLT INSTALLATION TORQUE:
480 LB-IN [55 Nm] FOR 5/8" HEX. ALUMINUM HARDWARE.
- 4 DIMENSIONS IN BRACKETS [] DENOTES METRIC UNITS [SI UNITS] AND ARE ROUNDED TO THE NEAREST WHOLE NUMBER. UNLESS OTHERWISE SPECIFIED THESE UNITS SHALL BE USED FOR REFERENCE ONLY.
- 5 INSTALLATION METHOD:
ALL CONTACT SURFACES OF THE CONNECTORS SHALL BE AGGRESSIVELY BRUSHED, A MINIMUM OF 2 BRUSHINGS ON EACH SURFACE, USING A STAINLESS STEEL WIRE BRUSH FILLED WITH PENETROX™ A13. REMOVE GREASE FROM SURFACE USING A CLEAN AND DRY CLOTH (NO SOLVENTS). IMMEDIATELY APPLY A THIN LAYER OF PENETROX™ A13 ON ALL CONTACT SURFACES BEFORE ASSEMBLY.
- 6 HEX BOLTS CAPTURED TO PREVENT TURNING DURING INSTALLATION.
- 7 DESIGNED FOR CORONA FREE OPERATION TO 550 KV.
- 8 THE CONCEPT SHOWN INCORPORATES DESIGN PRINCIPLES WHICH PERMIT OPERATION AT A VOLTAGE GRADIENT NORMALLY ASSOCIATED WITH 550 KV RMS OPERATION PHASE TO PHASE.

TO ORDER BURNDY® PRODUCTS CALL		TWO CONDUCTOR SPACER, EHV	
UNITED STATES 1-800-346-4175 (LONDONDERRY, NH)		ITEM NO: --	SCALE: 1:1
CANADA: 1-800-361-6975 (QUEBEC) 1-800-387-6487 (ALL OTHER PROVINCES)		CAT. NO: S2GGBP486A9	REV
FOR PRODUCT INFO: http://www.fciconnect.com		DRAWN BY: V ANAND 07/31/09	
		CHECKER: J HOSKER 08/07/09	
		DSN APPVL: R LAVOIE 08/12/09	
		MFG APPVL: T WAWRZYNIAK 08/07/09	
		QA APPVL: J HILLMAN 08/13/09	
		MKT APPVL: --	
		PROJ #:	
		SIZE	
		10104968	
		SHEET 1 OF 1	

REV: PE0200