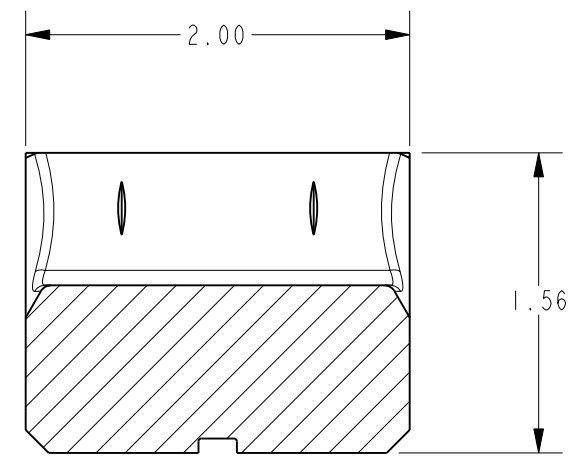
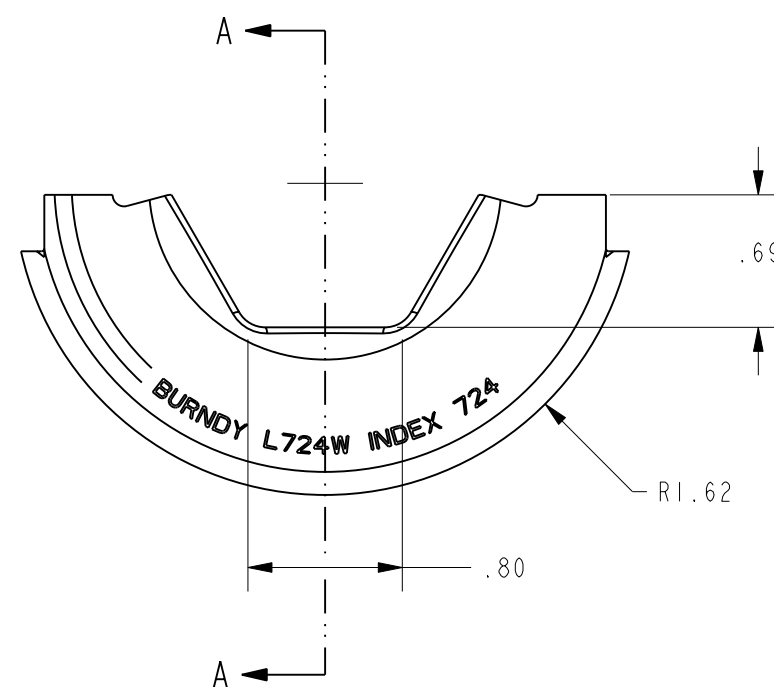
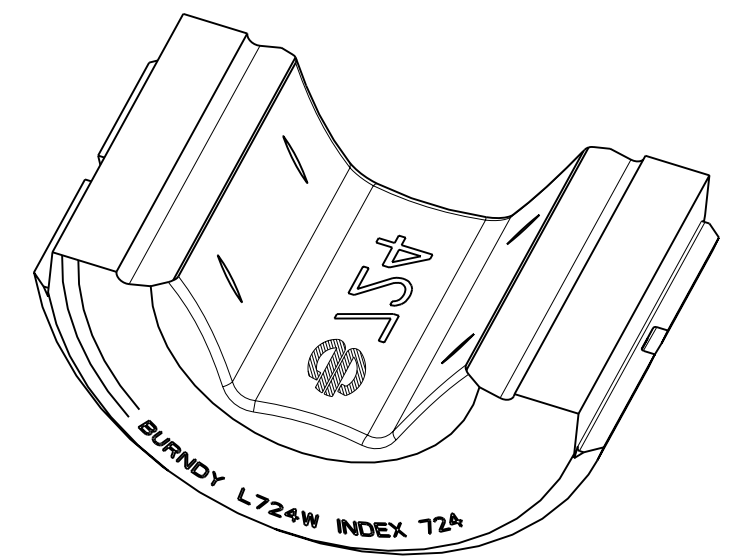
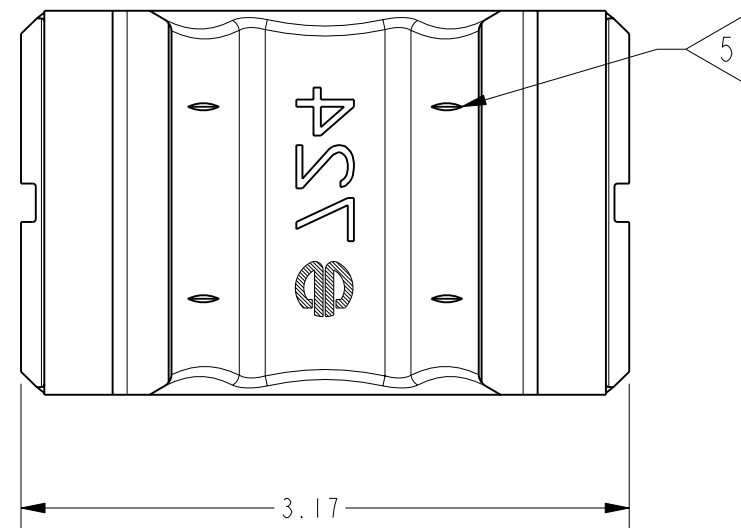


REV.	DATE	DESCRIPTION	ECO	BY	C'H'K.
B	4/21/2010 4:00:00 AM	RELEASE SALES DRAWING	20837	RM	JG



SECTION A-A

NOTES:

1. INTERPRET THIS DRAWING PER ASME Y14.5M-1994
2. USE ON Y60 HYPRESS™.
3. MATERIAL: STAINLESS STEEL
4. L724W HAS A WIDER PLOW WIDTH THAN L724 TO REDUCE THE NUMBER OF OVER-LAPPING CRIMPS.

5 USE EMBOSMENT ON CONNECTOR CREATED BY THESE INDICIA MARKS TO ALIGN OUTSIDE EDGE OF DIE. EMBOSMENT PROVIDES START LOCATION FOR THE NEXT OVERLAPPING CRIMP.

TO ORDER BURNDY® PRODUCTS CALL
 UNITED STATES:
 1-800-346-4175 (LONDONDERRY, NH)
 CANADA:
 1-800-361-6975 (QUEBEC)
 1-800-387-6487 (ALL OTHER PROVINCES)
 FOR PRODUCT INFO: <http://www.burndy.com>

L - DIE 724W	
ITEM NO: N/A	
CAT. NO: L724W	
DRAWN BY: R. MURUGESAN 1/28/2010	
CHECKER: R. ROMAN 4/15/2010	
DSN APPVL: R. ROMAN 4/15/2010	
MFG APPVL: A. SHLOPAK 4/15/2010	
QA APPVL: J. BRODEUR 4/21/2010	
MKT APPVL: R. POIRIER 4/16/2010	
PROD FAM: TOOLS_HYDRAULIC/L_DIES	SCALE: 1:1
PROJECT #: --	DRAWING NO
DOCUMENT TYPE: Sales	10112342
REL LEVEL: Released	B
	SHEET 1 OF 1



REV: PE0200