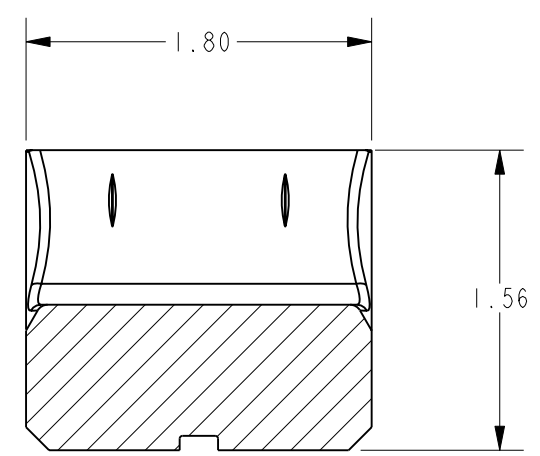
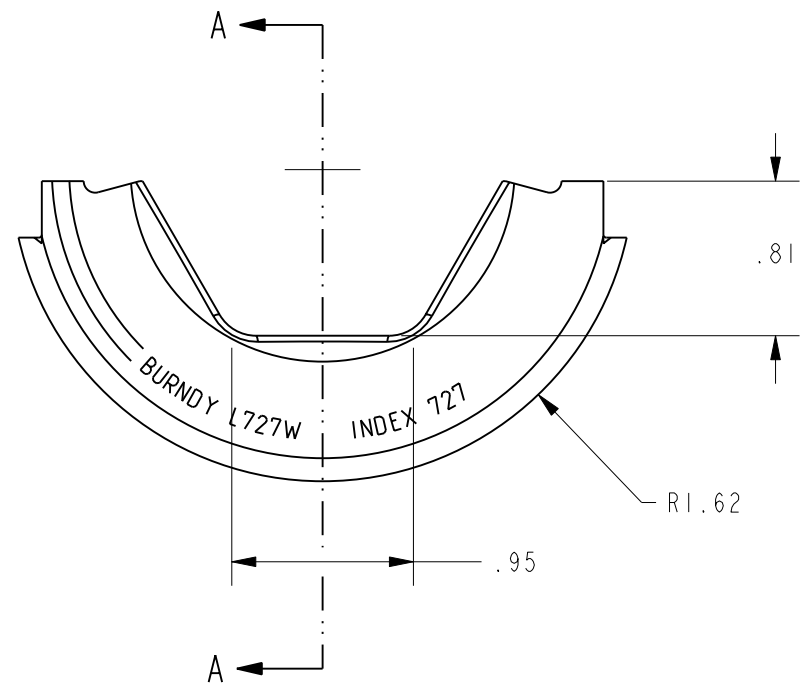
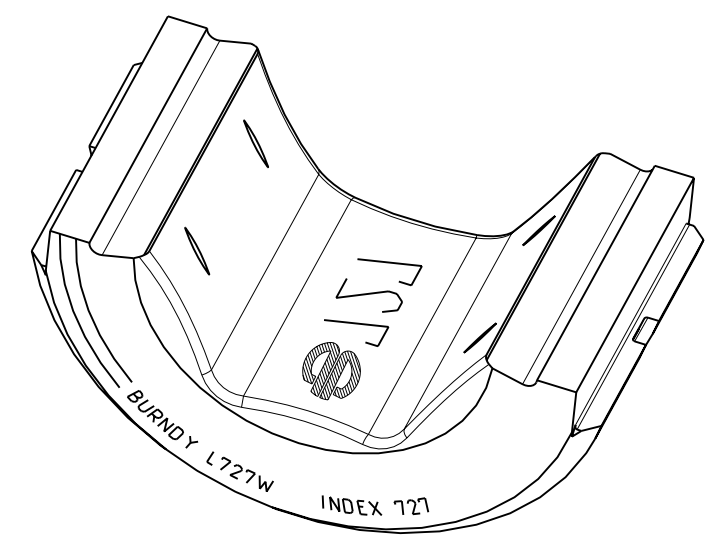
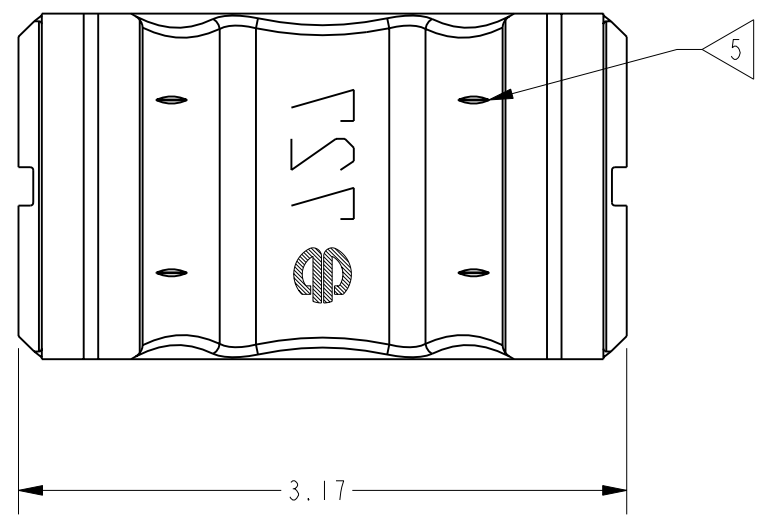


REV.	DATE	DESCRIPTION	ECO	BY	C'H'K.
B	4/21/2010 4:00:00 AM	RELEASE SALES DRAWING	20837	RM	JG



SECTION A-A

- NOTES:
1. INTERPRET THIS DRAWING PER ASME Y14.5M-1994
 2. USE ON Y60 HYPRESS™.
 3. MATERIAL: STAINLESS STEEL
 4. L727W HAS A WIDER PLOW WIDTH THAN L727 TO REDUCE THE NUMBER OF OVER-LAPPING CRIMPS.

5 USE EMBOSSEMENT ON CONNECTOR CREATED BY THESE INDICIA MARKS TO ALIGN OUTSIDE EDGE OF DIE. EMBOSSEMENT PROVIDES START LOCATION FOR THE NEXT OVERLAPPING CRIMP.

TO ORDER BURNDY® PRODUCTS CALL		L - DIE 727W	
UNITED STATES: 1-800-346-4175 (LONDONDERRY, NH)		ITEM NO: N/A	
CANADA: 1-800-361-6975 (QUEBEC) 1-800-387-6487 (ALL OTHER PROVINCES)		CAT. NO: L727W	
FOR PRODUCT INFO: http://www.burndy.com		DRAWN BY: R. MURUGESAN 1/28/2010	
		CHECKER: R. ROMAN 4/15/2010	
		DSN APPVL: R. ROMAN 4/15/2010	
		MFG APPVL: A. SHLOPAK 4/15/2010	
		QA APPVL: J. BRODEUR 4/21/2010	
		MKT APPVL: R. POIRIER 4/16/2010	
		SCALE: 1:1	
		PROJECT #: --	
		DRAWING NO	
		10112344	
		SHEET 1 OF 1	
		REV	
		B	

REV: PE0200