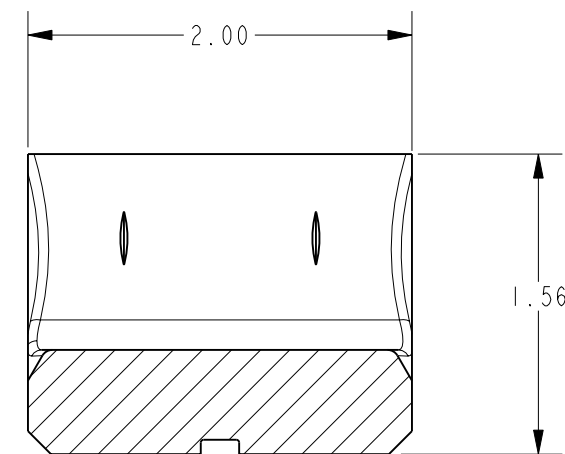
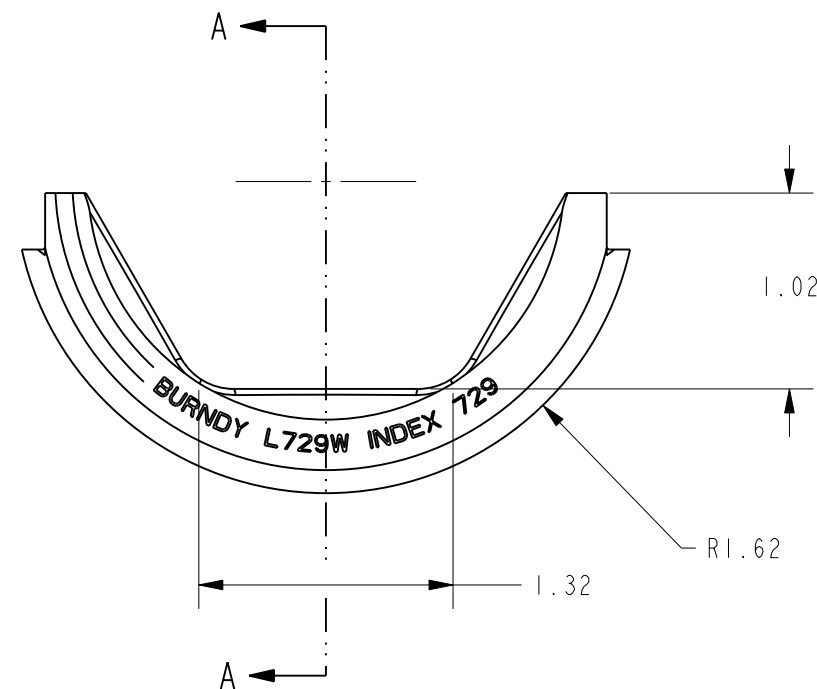
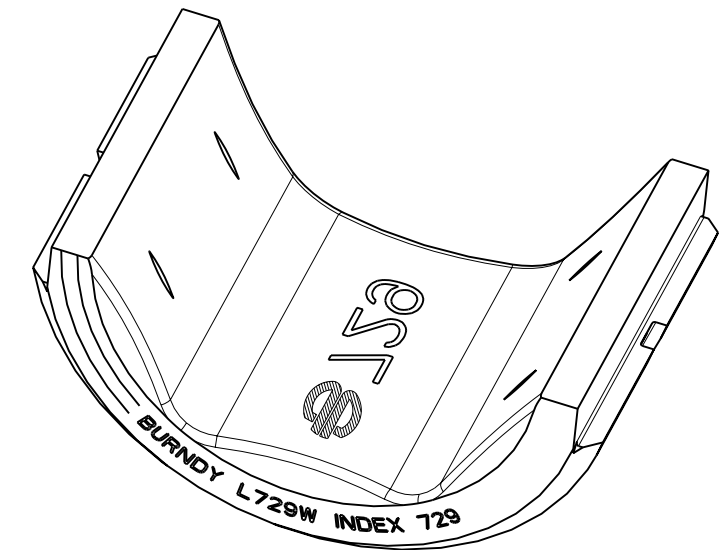
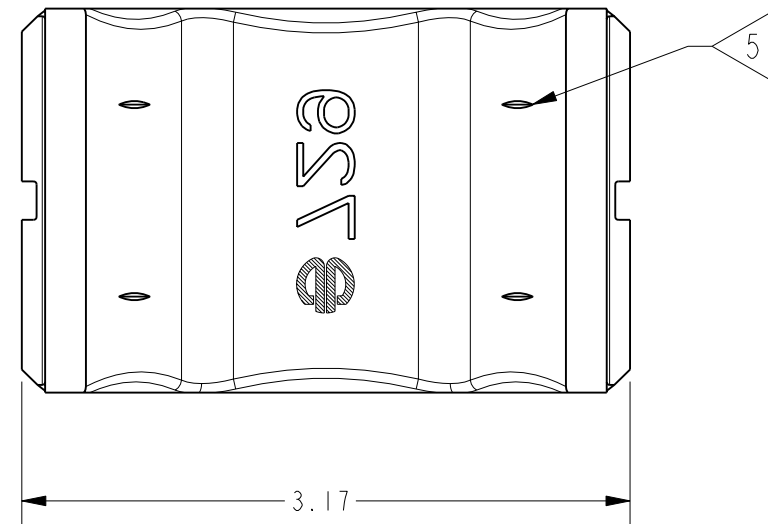


REV.	DATE	DESCRIPTION	ECO	BY	C'H'K.
B	4/21/2010 4:00:00 AM	RELEASE SALES DRAWING	20837	RM	JG



SECTION A-A

NOTES:

1. INTERPRET THIS DRAWING PER ASME Y14.5M-1994
2. USE ON Y60 HYPRESS™.
3. MATERIAL: STAINLESS STEEL
4. L729W HAS A WIDER PLOW WIDTH THAN L729 TO REDUCE THE NUMBER OF OVER-LAPPING CRIMPS.

5 USE EMBOSMENT ON CONNECTOR CREATED BY THESE INDICIA MARKS TO ALIGN OUTSIDE EDGE OF DIE. EMBOSMENT PROVIDES START LOCATION FOR THE NEXT OVERLAPPING CRIMP.

REV: PE0200

TO ORDER BURNDY® PRODUCTS CALL		L - DIE 729W	
UNITED STATES: 1-800-346-4175 (LONDONDERRY, NH)		ITEM NO: N/A	
CANADA: 1-800-361-6975 (QUEBEC) 1-800-387-6487 (ALL OTHER PROVINCES)		CAT. NO: L729W	
FOR PRODUCT INFO: <a href="http://www.burndy.com">http://www.burndy.com</a>		DRAWN BY: R. MURUGESAN 11/5/2009	
		CHECKER: R. ROMAN 4/15/2010	
		DSN APPVL: R. ROMAN 4/15/2010	
		MFG APPVL: A. SHLOPAK 4/15/2010	
		QA APPVL: J. BRODEUR 4/21/2010	
		MKT APPVL: R. POIRIER 4/16/2010	
		PROD FAM: TOOLS_HYDRAULIC/L_DIES	
		PROJECT #: --	
		DOCUMENT TYPE: Sales	
		REL LEVEL: Released	
		SCALE: 1:1	
		DRAWING NO: 10112346	
		REV: B	
		SHEET 1 OF 1	

