

DRAWING NO.
10113218

7 6 5 4 3 2 1

REV	DATE	DESCRIPTION	ECO	BY	C'H'K.
C	04/26/2013 00:00:00 AM	ADDED CAT. # HFB86PI TO TABLE	31434	NG	NJS

ONE CLAMP HALF							
BAR CLAMP		BUS BAR		"J" BOLT DIA.	L	W	MARKING
ITEM NUMBER	CATALOG NUMBER	RUN 'A'	TAP 'AA'				
344475	HFB22PI	2.00 [51]	2.00 [51]	3/8 [10]	4.38 [111]	4.38 [111]	BURNDY HFB22PI
344535	HFB33PI	3.00 [76]	3.00 [76]	3/8 [10]	4.38 [111]	4.38 [111]	BURNDY HFB33PI
344565	HFB42PI	4.00 [102]	2.00 [51]	3/8 [10]	5.75 [146]	5.75 [146]	BURNDY HFB42PI
344625	HFB44PI	4.00 [102]	4.00 [102]	1/2 [13]	5.75 [146]	5.75 [146]	BURNDY HFB44PI
344183	HFB63PI	6.00 [152]	3.00 [76]	1/2 [13]	7.75 [197]	4.75 [121]	BURNDY HFB63PI
344685	HFB66PI	6.00 [152]	6.00 [152]	5/8 [16]	8.12 [206]	8.12 [206]	BURNDY HFB66PI
10008336	HFB86PI	8.00 [203]	6.00 [152]	3/4 [19]	10.38 [264]	8.38 [213]	BURNDY HFB86PI
344177	HFB88PI	8.00 [203]	8.00 [203]	3/4 [19]	10.50 [267]	10.50 [267]	BURNDY HFB88PI

COPPER BUS BAR WIDTH (INCHES)		BAR CLAMP ASSEMBLY COMPONENTS							
RUN-A	TAP-AA	BAR CLAMP		BOLTS**		NUTS		SPLIT LOCKWASHERS	
QTY.	CAT. NO.	QTY.	CAT. NO.	QTY.	CAT. NO.	QTY.	CAT. NO.	QTY.	CAT. NO.
2.00 [51]	2.00 [51]	2	HFB22PI	4	38X(*)HEB	4	38CHEN	4	38SW
3.00 [76]	3.00 [76]	2	HFB33PI	4	38X(*)HEB	4	38CHEN	4	38SW
4.00 [102]	2.00 [51]	2	HFB42PI	4	38X(*)HEB	4	38CHEN	4	38SW
4.00 [102]	4.00 [102]	2	HFB44PI	4	50X(*)HEB	4	50CHEN	4	50SW
6.00 [152]	3.00 [76]	2	HFB63PI	4	50X(*)HEB	4	50CHEN	4	50SW
6.00 [152]	6.00 [152]	2	HFB66PI	4	62X(*)HEB	4	62CHEN	4	62SW
8.00 [203]	6.00 [152]	2	HFB86PI	4	75X(*)HEB	4	75CHEN	4	75SW
8.00 [203]	8.00 [203]	2	HFB88PI	4	75X(*)HEB	4	75CHEN	4	75SW

* Z = SPACE BETWEEN THE BAR CLAMP CONTACT SURFACES.

** SEE TABLE BELOW WHEN ORDERING ASSEMBLY CLAMPING BOLTS TO SPECIFY CORRECT BOLT LENGTH IN CAT.#.

CLAMP NUMBER	"J" BOLT DIA.	BOLT LENGTH**							
		WHEN Z=1.25*	WHEN Z=1.50*	WHEN Z=1.75*	WHEN Z=2.00*	WHEN Z=2.25*	WHEN Z=2.50*	WHEN Z=2.75*	WHEN Z=3.00*
HFB22PI	3/8"(-16) [10]	3.00 [76]	3.25 [83]	3.50 [89]	4.00 [102]	4.00 [102]	4.50 [114]	4.50 [114]	5.00 [127]
HFB33PI	3/8"(-16) [10]	3.00 [76]	3.25 [83]	3.50 [89]	4.00 [102]	4.00 [102]	4.50 [114]	4.50 [114]	5.00 [127]
HFB42PI	3/8"(-16) [10]	3.00 [76]	3.25 [83]	3.50 [89]	4.00 [102]	4.00 [102]	4.50 [114]	4.50 [114]	5.00 [127]
HFB44PI	1/2"(-13) [13]	3.25 [83]	3.50 [89]	3.75 [95]	4.00 [102]	4.50 [114]	4.50 [114]	5.00 [127]	5.00 [127]
HFB63PI	1/2"(-13) [13]	3.25 [83]	3.50 [89]	3.75 [95]	4.00 [102]	4.50 [114]	4.50 [114]	5.00 [127]	5.00 [127]
HFB66PI	5/8"(-11) [16]	3.50 [89]	4.00 [102]	4.00 [102]	4.50 [114]	4.50 [114]	5.00 [127]	5.00 [127]	6.00 [152]
HFB86PI	3/4"(-10) [19]	3.75 [95]	4.00 [102]	4.50 [114]	4.50 [114]	5.00 [127]	5.00 [127]	5.50 [140]	5.50 [140]
HFB88PI	3/4"(-10) [19]	3.75 [95]	4.00 [102]	4.50 [114]	4.50 [114]	5.00 [127]	5.00 [127]	5.50 [140]	5.50 [140]

NOTES:
1 MATERIAL:
H-CLAMP: CAST COPPER ALLOY.

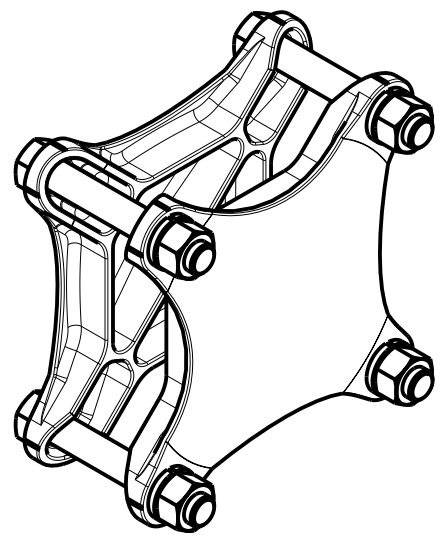
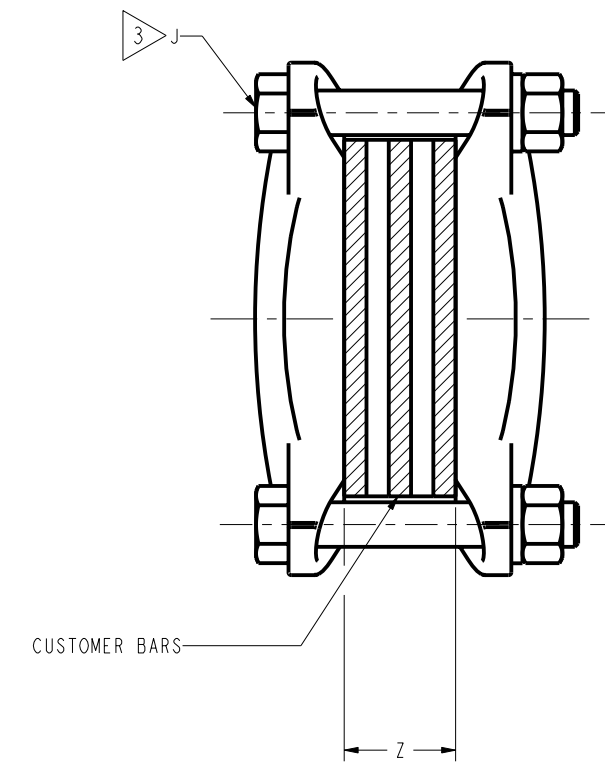
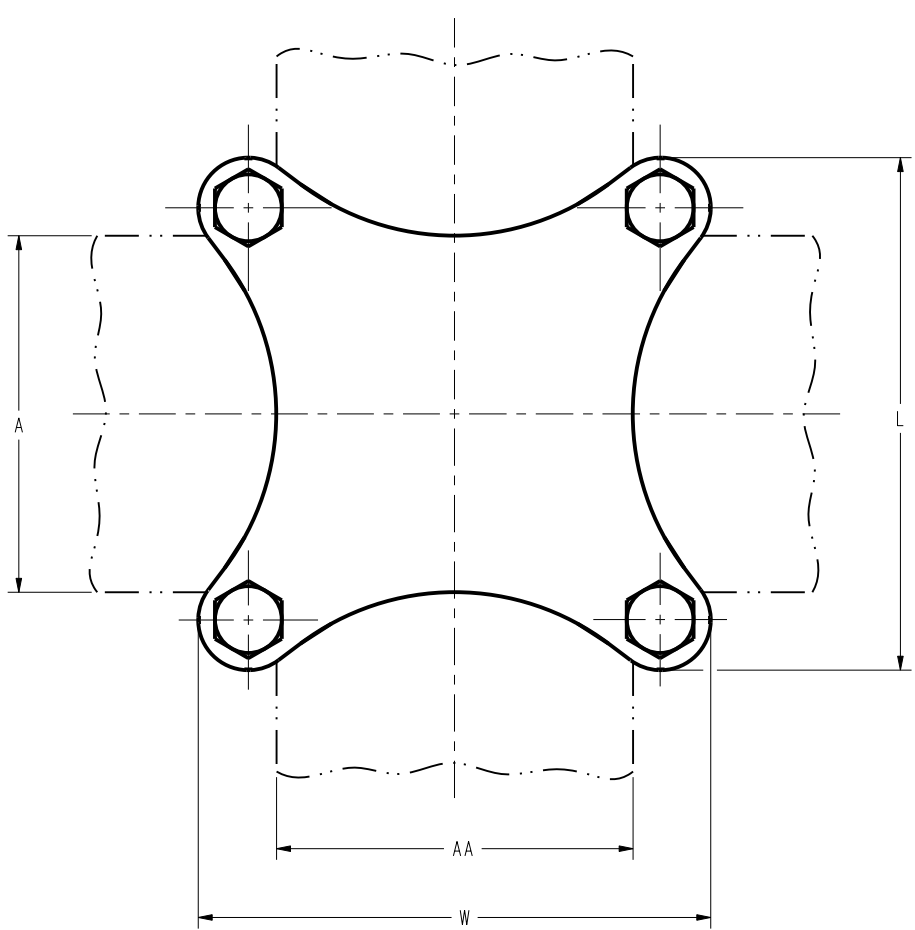
2 ACCOMMODATES:
RUN & TAP: SEE TABLE

3 NOMINAL BOLT INSTALLATION TORQUE:
240 IN-LBS [28 Nm] FOR 3/8" HEX. SILICON BRONZE HARDWARE.
480 IN-LBS [55 Nm] FOR 1/2" HEX. SILICON BRONZE HARDWARE.
660 IN-LBS [75 Nm] FOR 5/8" HEX. SILICON BRONZE HARDWARE.
1050 IN-LBS [119 Nm] FOR 3/4" HEX. SILICON BRONZE HARDWARE.

4 DIMENSIONS IN BRACKETS [] DENOTES METRIC UNITS [SI UNITS] AND ARE ROUNDED TO THE NEAREST WHOLE NUMBER. UNLESS OTHERWISE SPECIFIED THESE UNITS SHALL BE USED FOR REFERENCE ONLY.

5 ALL LETTERING IS RECESSED AND WILL APPEAR ON OUTSIDE OF CASTING.

6 ALL COMPONENTS ORDERED SEPERATELY.
SEE BAR CLAMP ASSEMBLY COMPONENTS TABLE FOR QUANTITIES.



ISOMETRIC VIEW

TO ORDER BURNDY® PRODUCTS CALL
UNITED STATES
1-800-346-4175 (LONDONDERRY, NH)
CANADA:
1-800-361-6975 (QUEBEC)
1-800-387-6487 (ALL OTHER PROVINCES)
FOR PRODUCT INFO: <http://www.burndy.com>

BAR CLAMP ASSEMBLY			
ITEM NO:	SEE TABLE	DRAWING NO	REV
CAT. NO:	HFB--PI (SEE TABLE)	10113218	C
DRAWN BY:	S PANDIAN 04/17/12	SCALE:	1:1
CHECKER:	P SHERINMOL 04/18/12	PROJECT #:	--
DSN APPVL:	R LAVOIE 04/30/13	DOCUMENT TYPE:	Sales
MFG APPVL:	T WAWRZYNIAK 04/29/13	REL LEVEL:	Released
QA APPVL:	J HILLMAN 05/01/13		
MKT APPVL:	B MICHAUD 04/29/13		
PROD FAM:	SUBSTATION		

REV: PEO200

8 7 6 5 4 3 2 1