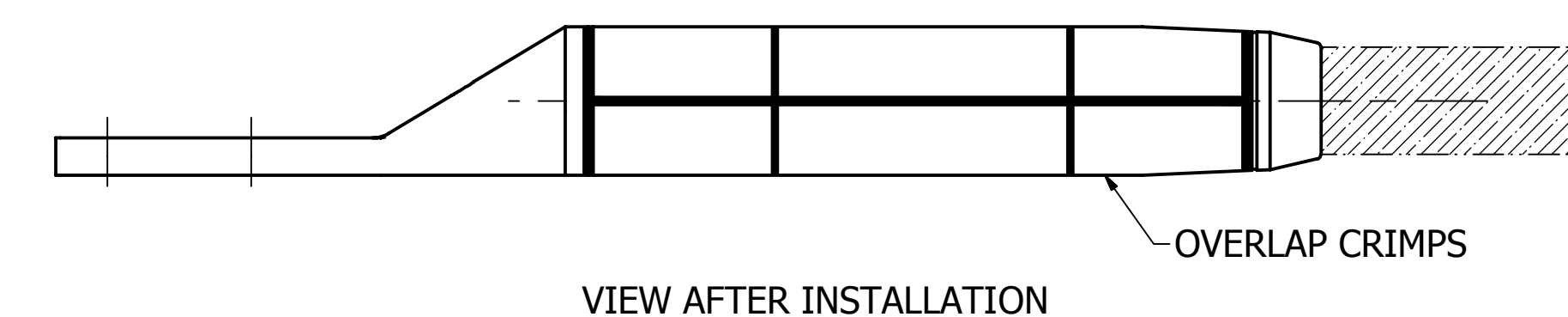
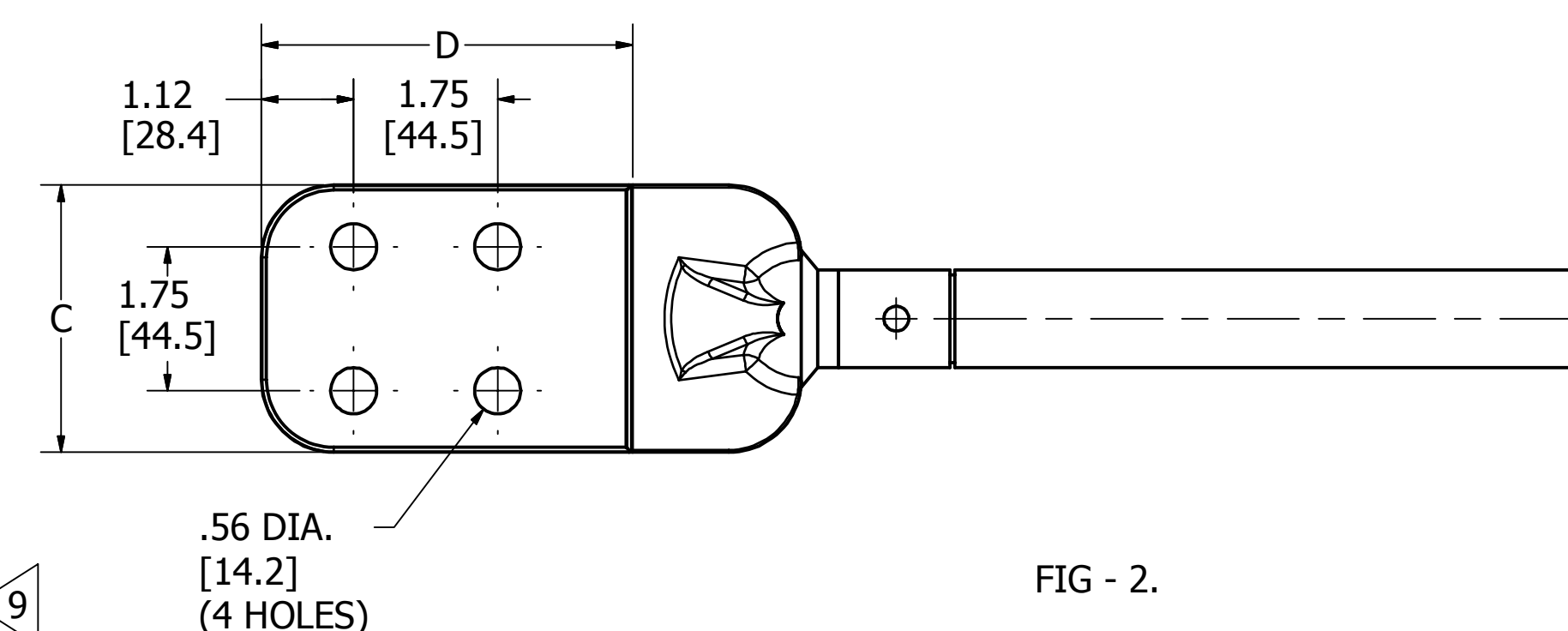
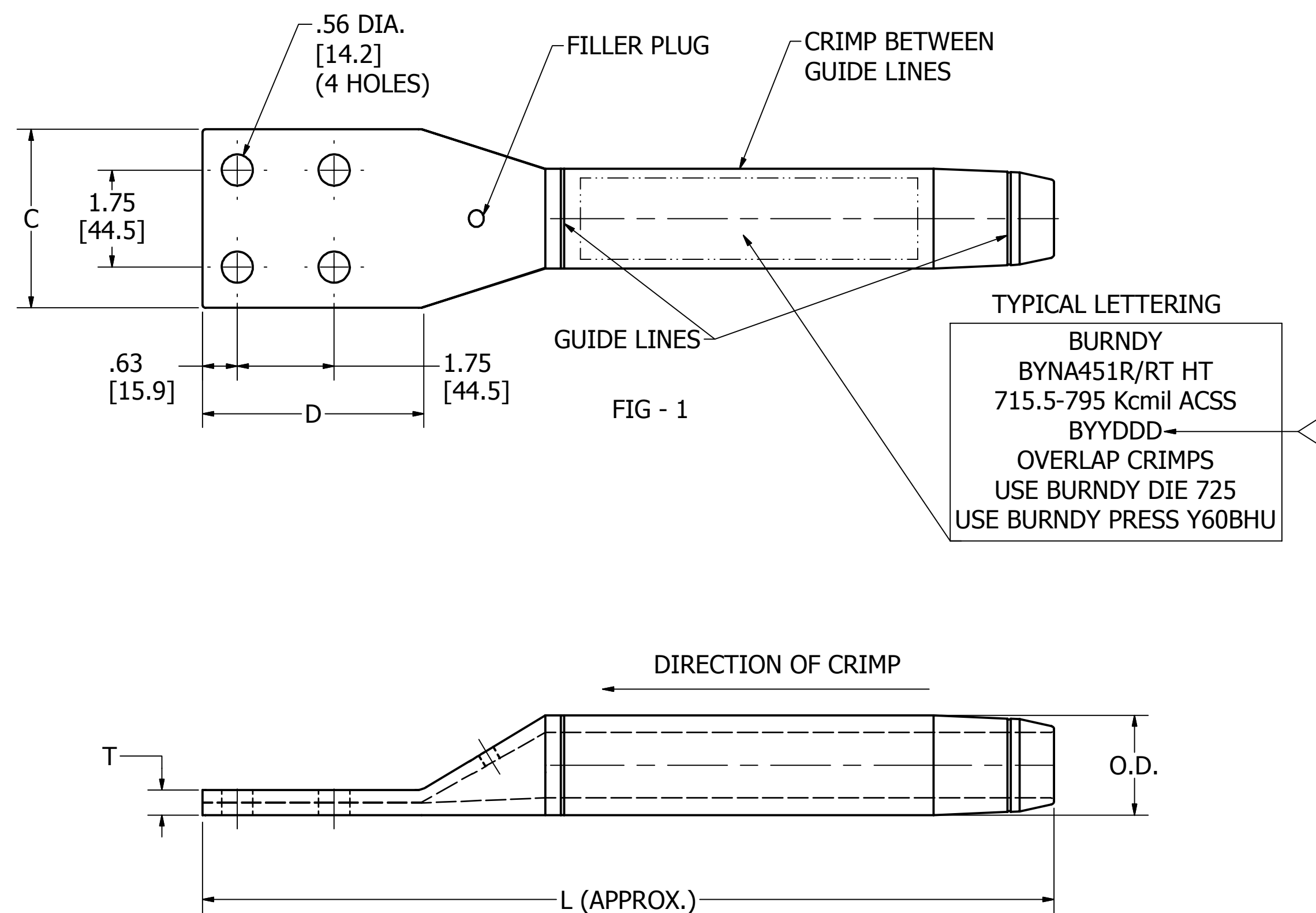


CONDUCTOR ACSS	MATERIAL NUMBER	CATALOG NUMBER	FIG. NO.	HARDWARE KIT	C	D	(L)	O.D	T	INSTALLATION TOOLING OVERLAP CRIMPS								
										BURNDY® HYPRESS™ & DIE SET		ALCOA ¹² PRESS		T & B ¹³ DIE SET		ACA DIES & PRESS		
										DIE INDEX	Y60B	150B	H2H	T&B 21940 TYPE PRESS	60 TON PRESS	100 TON PRESS		
300 - 336.4 Kcmil ACSS	10113812	BYNA32RHHT	2	TMH9	3.25 [82.5]	4.50 [114.3]	16.33 [414.8]	1.19 [30.2]	.75 [19.0]	717	L717	M717	H717	96	--	--		
	10113813	BYNA32RHHT																
397.5 Kcmil ACSS	10113814	BYNA34RHHT	2	TMH9	3.25 [82.5]	4.50 [114.3]	16.37 [415.8]	1.30 [33.0]	.75 [19.0]	719	L719	M719	H719	106	6020AH	10020AH		
	10113815	BYNA34RHHT																
477 Kcmil ACSS	10103101	BYNA36RHHT	2	TMH9	3.25 [82.5]	4.50 [114.3]	16.64 [422.6]	1.41 [35.7]	.75 [19.0]	720	L720	M720	H720	115	--	--		
	10103111	BYNA36RHHT																
556.5 Kcmil ACSS	10113816	BYNA39RHHT	2	TMH9	3.25 [82.5]	4.50 [114.3]	17.04 [432.8]	1.50 [38.1]	.75 [19.0]	722	L722	M722	H722	125	6024AH	10024AH		
	10113817	BYNA39RHHT																
605 - 666.6 Kcmil ACSS	10113818	BYNA43RHHT	1	TMH4	3.07 [78.0]	3.95 [100.3]	14.87 [377.7]	1.61 [40.9]	.36 [9.1]	724	L724	M724	H724	140	--	--		
	10113819	BYNA43RHHT																
715.5 - 795 Kcmil ACSS	10106477	BYNA451RHHT	1	TMH24	3.22 [81.8]	3.95 [100.3]	15.37 [390.4]	1.80 [45.7]	.45 [11.4]	725	L725	M725	H725	150	--	--		
	10113820	BYNA451RHHT																
900 - 1113 Kcmil 45 - 7 STR ACSS	10113821	BYNA49RHHT	1	TMH24	3.22 [81.8]	3.95 [100.3]	15.57 [395.5]	1.97 [50.0]	.52 [13.2]	727	L727	M727	H727	161	6030AH	10030AH		
	10113822	BYNA49RHHT																
1113 54 - 19 STR - 1351.5 Kcmil ACSS	10113823	BYNA52RHHT	1	TMH9	3.22 [81.8]	3.95 [100.3]	17.00 [431.8]	2.25 [57.2]	.71 [18.0]	728	L728	M728	H728	189	6036AH	10036AH		
	30000880	BYNA52RHHT																
1431 Kcmil ACSS	10113825	BYNA54RHHT	1	TMH9	3.22 [81.8]	3.95 [100.3]	18.62 [472.9]	2.25 [57.2]	.71 [18.0]	728	L728	M728	H728	189	6036AH	10036AH		
	10113826	BYNA54RHHT																
1510.5 - 1590 Kcmil ACSS	10113827	BYNA56RHHT	1	TMH9	3.44 [87.4]	3.95 [100.3]	17.78 [451.6]	2.50 [63.5]	.86 [21.8]	729	L729	M729	H729	204	6040AH	10040AH		
	10113828	BYNA56RHHT																
1780 Kcmil ACSS	10113829	BYNA58RHHT	1	TMH9	3.47 [88.1]	3.95 [100.3]	18.50 [469.9]	2.50 [63.5]	.80 [20.3]	735	L735	M735	H735	2,12,214	6040AH	10040AH		
	10113830	BYNA58RHHT																
2156 - 2167 Kcmil ACSS	10113831	BYNA59RHHT	1	TMH9	3.57 [90.7]	3.95 [100.3]	18.34 [465.8]	2.50 [63.5]	.64 [15.3]	735	L735	M735	H735	214	--	--		
	10113832	BYNA59RHHT																

REV	DATE	DESCRIPTION	ECO	BY	CHK.
D	01/25/2016	FOCUS REQUEST PIN FPN1601061	42753	AV	MB

NOTES:

- MATERIAL:
CONNECTOR, ALUMINUM ALLOY, NO-OX-ID COATED
ALUMINUM FILLER PLUG
HARDWARE:
BOLTS, ALUMINUM ALLOY WAX COATED
NUTS AND FLAT WASHERS, ALUMINUM ALLOY
RESILIENT WASHERS, GALVANIZED STEEL
- RECOMMENDED TORQUE:
1/2" DIA. ALUMINUM BOLTS, 300 IN-LB. [34 NM].
- DESIGNED FOR CORONA FREE OPERATION TO 230 KV WITH NO ACCESSORIES.
- FLASH FORMED DURING CRIMPING SHOULD BE REMOVED BY FILLING,
AND SHARP CORNERS ROUNDED OFF. THE BARREL PORTION OF THIS CONNECTOR
WILL OPERATE QUIETER THAN THE CONDUCTOR AT EXTRA HIGH VOLTAGES.
- CONNECTOR IS INDIVIDUALLY PACKAGED AND SEALED IN POLYTUBE.
- CONNECTOR SHALL BE SHIPPED UNASSEMBLED.
- PENETROX™ PENHT IS REQUIRED FOR INSTALLATION. PENETROX™ PENHT
IS NOT PROVIDED WITH THE CONNECTOR AND IS PURCHASED SEPARATELY.
- INSTALLATION TOOLING IS PURCHASED SEPARATELY.
- LOCATION AND DATE CODE (B=LOCATION, YY=YEAR, DDD=DAY).
- INSTALLATION INSTRUCTION FORM10085255 (10085256).
- DIMENSIONS IN BRACKETS [] ARE IN MILLIMETERS, AND ARE FOR REFERENCE ONLY.
- THE DIES LISTED ARE MANUFACTURED BY BURNDY® CORP. FOR USE IN ALCOA H2H&150B PRESSES.
- THE EQUIVALENT T&B DIE INDEXES ARE LISTED FOR YOUR CONVENIENCE.



TO ORDER BURNDY® PRODUCTS CALL		0 DEG. HYLUG™ & HARDWARE FOR ACSS	
UNITED STATES 1-800-346-4175 (LONDONDERRY, NH)		MAT'L NO: SEE TABLE	
CANADA: 1-800-361-6975 (QUEBEC) 1-800-387-6487 (ALL OTHER PROVINCES)		CAT. NO: SEE TABLE	
FOR PRODUCT INFO: http://www.burndy.com		DRAWN BY: AUGUSTIN 3/10/2010	
		CHECKER: --	
		DSN APRVL: P WALTZ 8/2/2013	
		MFG APRVL: --	
		QA APRVL: C ACKERMAN 8/22/2013	
		MKT APRVL: B CRUSDHER 9/4/2013	
		PROD FAM: --	
		DRAWING NO	
		10113640	
		REV	
		D	
		SHEET 1 OF 1	