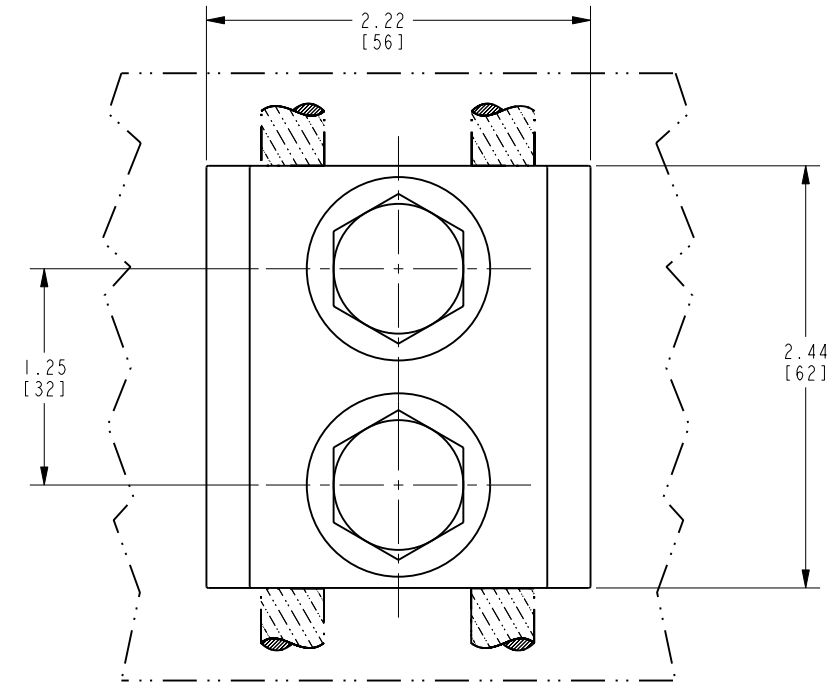
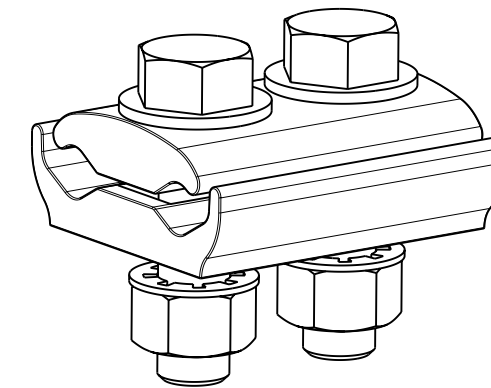
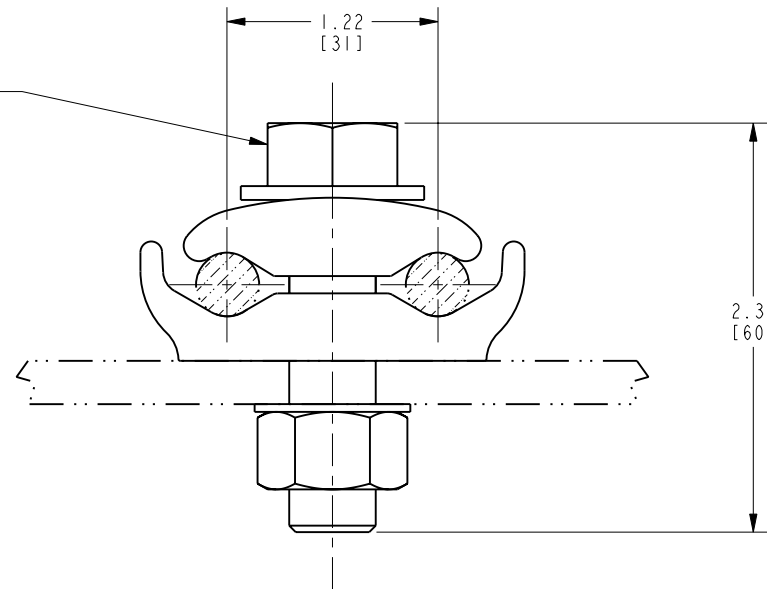


DRAWING NO.  
10114041

REV	DATE	DESCRIPTION	ECO	BY	C'H'K.
A	3/31/2010 11:00:00 AM	CREAT PRODUCTION DRAWING FOR CAT.# GL2929CG12	20671	BT	MA



1/2"-13 X 2.00 HEX DURIUM BOLTS,NUTS  
EXTERNAL TOOTH LOCKWASHERS &  
FLAT WASHERS  
[2 PLACES]



NOTES:

- MATERIAL: CAST COPPER ALLOY.
- ACCOMMODATES:  
CONDUCTOR: 2/0 SOL. (.365 DIA.)(9.27) THRU 250 Kcmil (.578 DIA.)(14.68)  
BUS BAR: .25" THICK MAX.
- FOR INSTALLATION, TIGHTEN BOLTS EVENLY TO 480 IN-LB.
- DIMENSIONS IN [ ] BRACKETS ARE IN MILLIMETERS ROUNDED OFF TO THE NEAREST MILLIMETER, UNLESS OTHERWISE NOTED, AND ARE FOR REFERENCE ONLY.

TO ORDER BURNDY® PRODUCTS CALL		GROUND CLAMP	
UNITED STATES: 1-800-346-4175 (LONDONDERRY, NH)		ITEM NO: 27002260	
CANADA: 1-800-361-6975 (QUEBEC) 1-800-387-6487 (ALL OTHER PROVINCES)		CAT. NO: GL2929CG12	
FOR PRODUCT INFO: <a href="http://www.burndy.com">http://www.burndy.com</a>		DRAWN BY: G SANKAR 03/09/10	
		CHECKER: P WASON 3/30/2010	
		DSN APPVL: P WASON 3/30/2010	
		MFG APPVL: K GILBERT 3/31/2010	
		QA APPVL: H JAMES 3/30/2010	
		MKT APPVL: -- --	
		SCALE: 1:1	
		PROD FAM: MECHANICAL GROUNDING	
		DRAWING NO	
		10114041	
		REV	
		A	
		SHEET 1 OF 1	

REV: PE0200