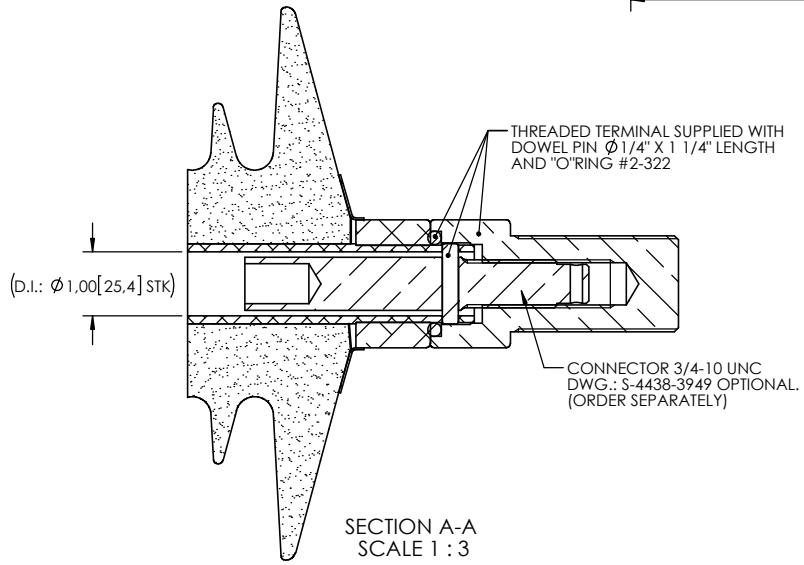
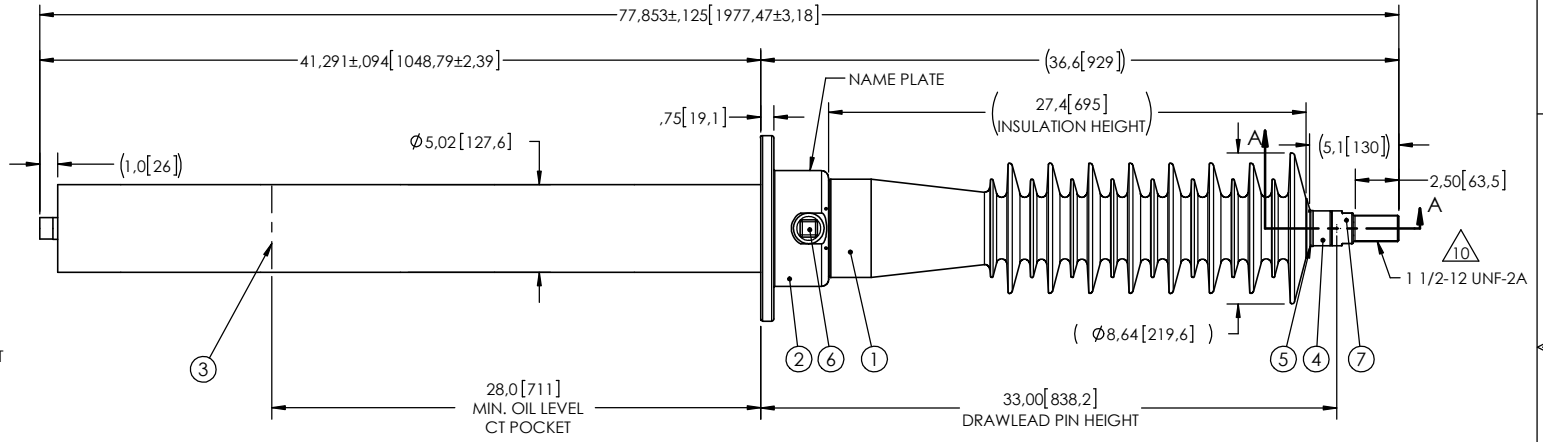
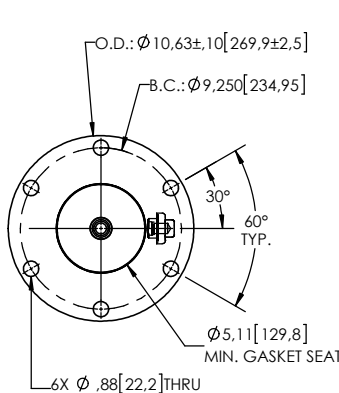


NOTES:

- 1 CREEPAGE DISTANCE: 65.8" / 1671mm
- 2 ARC DISTANCE: 29.3" / 744mm
- 3 NOMINAL VOLTAGE: 72.5kV
- 4 NOMINAL CURRENT: 400A
- 5 VOLTAGE WITHSTAND, 60 sec.: 175kV
- 6 BIL: 350kV
- 7 ROUTINE TEST ACCORDING TO: CSA C88.1-96
- 8 MAX. TORQUE APPLIED ON FLANGE BOLTS: 40 lb·ft / 54.2 N·m
- 9 WEIGHT: 106 lb / 48.1 kg
- 10 SILVER PLATED, AS PER ASTM B700, TYPE 1, GRADE D, CLASS N, NO NICKEL LAYER, FROM 13 TO 20 MICROMETERS THICKNESS

REVISIONS					
ZONE	REV.	DESCRIPTION	DRAWN BY	DATE	APPR.



ITEM NO.	QTY	DRAWING NO.	PART NO.	DESCRIPTION	NOTE / MAT'L
7	1	S-4831-4209-1		THREADED TERMINAL KIT	COPPER
6	1	S-1001-2022		CAPACITANCE TAP ASSEMBLY	ALUMINUM
5	1	S-1344-0162-1		CAP	ALUMINUM
4	1	S-1485-9610		TUBE ASSEMBLY	ALUMINUM
3	1	S-1485-9609		SHIELD ASSEMBLY	BRASS
2	1	S-4854-4168		FLANGE	ALUMINUM
1	1	S-1485-9608	-001	CASTING, CYCLOALIPHATIC RESIN	EC-APG-02

PARTS LIST					
GENERAL TOLERANCES (UNLESS OTHERWISE SPECIFIED)			Electro Composites solid HV bushings solution		
X.	±0.125	TITLE: SDC® BUSHING 72.5kV, 400A MODEL: 350-004-T-1017-00			
.X	±0.094				
.XX	±0.063	DRAWN BY: A.SAVARD DATE: 2018/02/09			
.XXX	±0.031	CHECK BY:			
ANGLES	±0.25°	PROJECT NO.:			
RADIUS	±0.031	PROJECT MANAGER:			
REMOVE BURRS AND BREAK SHARP EDGES DIMENSIONS ARE IN INCHES (UNLESS OTHERWISE SPECIFIED)			SCALE: 1:11	CAGE CODE:	DRAWING NO.: S-1485-9608
			REVISION: NR	GENERATED BY: SolidWorks 2013	SHEET: 1 of 1

This drawing is the proprietary property of Electro Composites (2008) ULC, not part of the public domain, and is issued with the express understanding and agreement that it is not to be reproduced or copied in whole or in part or issued for furnishing information to others, or used directly or indirectly, in any way detrimental to the interest of Electro Composites (2008) ULC and is to be returned upon request by Electro Composites (2008) ULC. All Rights Reserved.