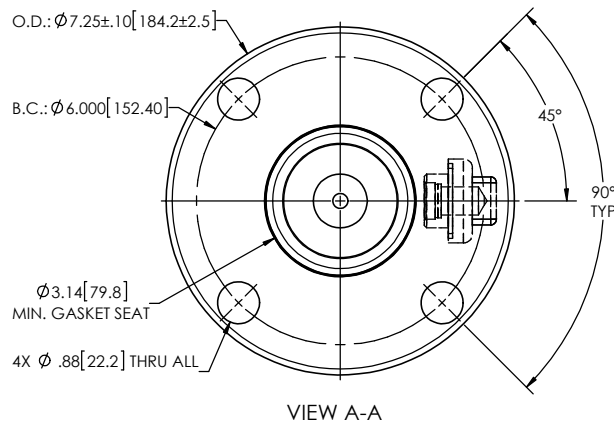
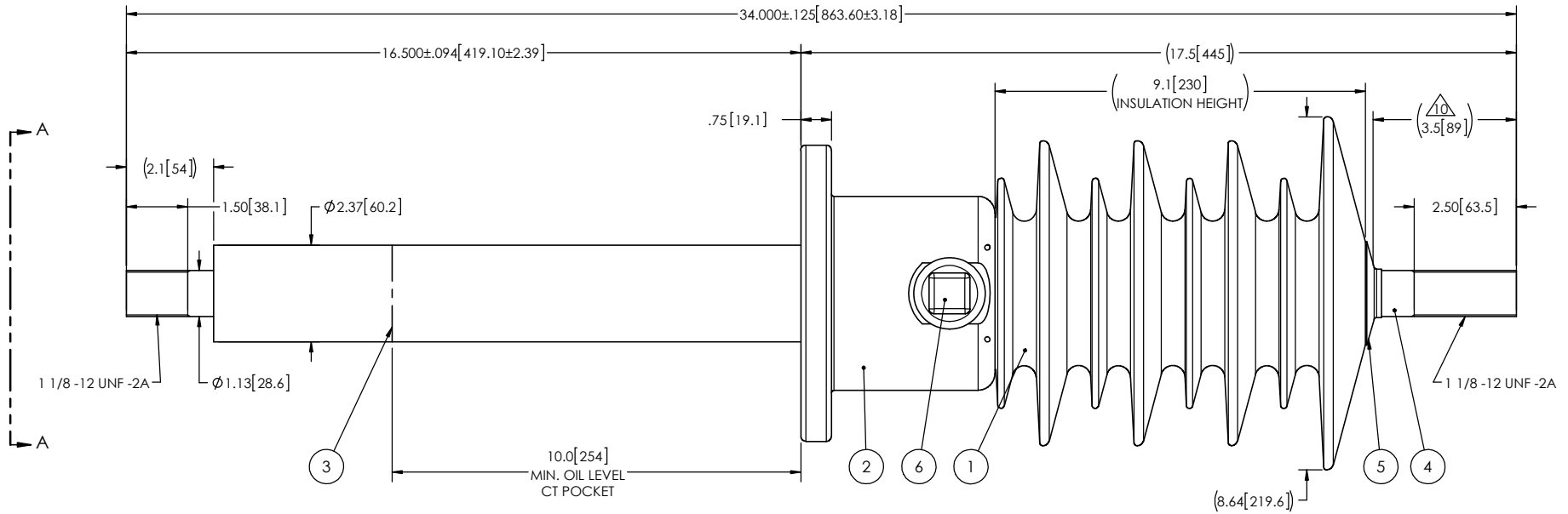


NOTES:

- 1 CREEPAGE DISTANCE: 29.3" / 744mm
- 2 ARC DISTANCE: 12.0" / 304mm
- 3 NOMINAL VOLTAGE: 15kV
- 4 NOMINAL CURRENT: 1200A
- 5 VOLTAGE WITHSTAND, 60 sec.: 50kV
- 6 BIL: 110kV
- 7 ROUTINE TEST ACCORDING TO: IEEE C57.19.01
- 8 MAX. TORQUE APPLIED ON FLANGE BOLTS: 40 lbf·ft / 54.2 N·m
- 9 WEIGHT: 34 lb / 15.4 kg
- 10 SILVER PLATED, AS PER ASTM B700, TYPE 1, GRADE D, CLASS N, NO NICKEL LAYER, FROM 13 TO 20 MICROMETERS THICKNESS
- 11 MAXIMUM OPERATING TEMPERATURE: 130°C

REVISIONS					
ZONE	REV.	DESCRIPTION	DRAWN BY	DATE	APPR.



This drawing is the proprietary property of Electro Composites (2008) ULC, not part of the public domain, and is issued with the express understanding and agreement that it is not to be reproduced or copied in whole or in part or issued for furnishing information to others, or used directly or indirectly, in any way detrimental to the interest of Electro Composites (2008) ULC and is to be returned upon request by Electro Composites (2008) ULC. All Rights Reserved.

ITEM NO.	QTY	DRAWING NO.	PART NO.	DESCRIPTION	NOTE / MAT'L
6	1	S-1001-2022		CAPACITANCE TAP ASSEMBLY	ALUMINUM
5	1	S-1081-0593		CAP	COPPER
4	1	S-3872-9715		ROD ASSEMBLY	COPPER
3	1	S-5989-5568		SHIELD ASSEMBLY	COPPER
2	1	S-5989-5567		FLANGE	ALUMINUM
1	1	S-3872-9714	-001	CASTING, CUCLOALOPHATIC RESIN	EC-APG-15NA

PARTS LIST

GENERAL TOLERANCES (UNLESS OTHERWISE SPECIFIED)

X.	±0.125
.X	±0.094
.XX	±0.063
.XXX	±0.031
ANGLES	±0.25°
RADIUS	±0.031

REMOVE BURRS AND BREAK SHARP EDGES

DIMENSIONS ARE IN INCHES (UNLESS OTHERWISE SPECIFIED)

Electro Composites
solid HV bushings solution

TITLE: SDC® BUSHING 15kV, 1200A
MODEL: 110-012-T-1028-00

DRAWN BY: M. FORGET	DATE: 2018/06/08	FORMAT: A	CAGE CODE	DRAWING NO.: S-3872-9714	REVISION: NR
PROJECT ENG.:	PROJECT MANAGER:	SCALE: 1:4	GENERATED BY: SolidWorks 2013	SHEET: 1 of 1	