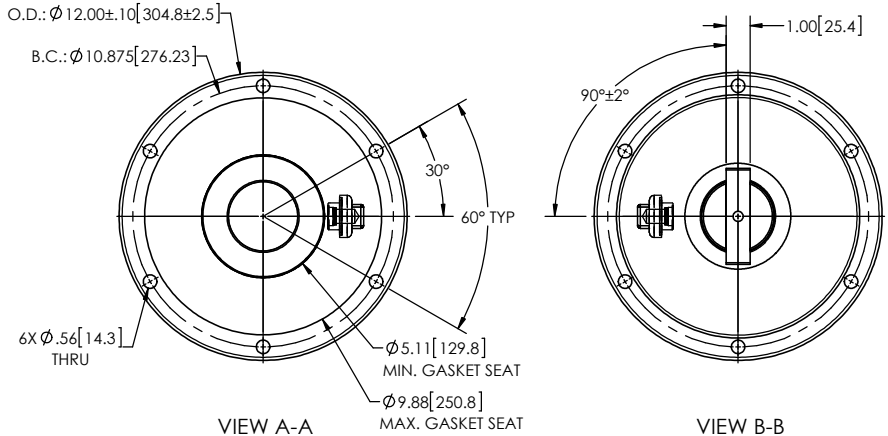
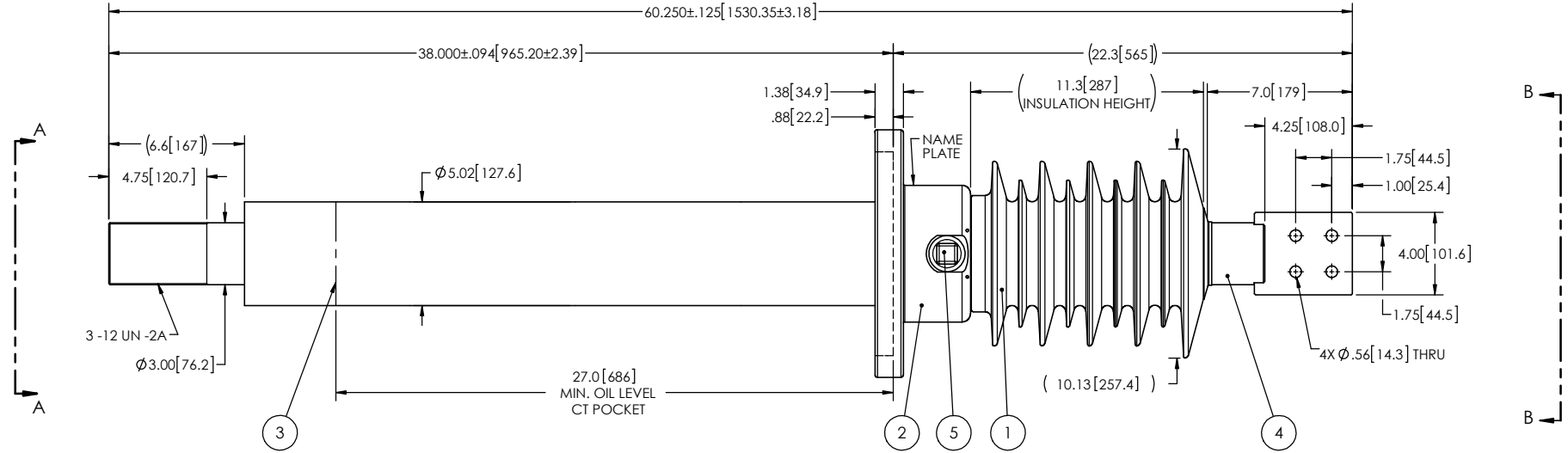


NOTES:

- 1 CREEPAGE DISTANCE: 34.3" / 872mm
- 2 ARC DISTANCE: 14" / 356mm
- 3 NOMINAL VOLTAGE: 25kV
- 4 NOMINAL CURRENT: 3000A
- 5 VOLTAGE WITHSTAND, 60 sec.: 60kV
- 6 BIL: 150kV
- 7 ROUTINE TEST ACCORDING TO: IEEE C57.19.01
- 8 MAX. TORQUE APPLIED ON FLANGE BOLTS: 70 lbf·ft/94 N·m
- 9 WEIGHT: 194 lb / 88 kg
- 10 MAXIMUM OPERATING TEMPERATURE: 130°C

REVISIONS					
ZONE	REV.	DESCRIPTION	DRAWN BY	DATE	APPR.



ITEM NO.	QTY	DRAWING NO.	PART NO.	DESCRIPTION	NOTE / MAT'L
5	1	S-1001-2022		CAPACITANCE TAP ASSEMBLY	ALUMINUM
4	1	S-1195-9753		ROD ASSEMBLY	COPPER
3	1	S-8396-7812		SHIELD ASSEMBLY	COPPER
2	1	S-8396-7811		FLANGE	ALUMINUM
1	1	S-1195-9752	-001	CASTING, CYCLOALIPHATIC RESIN	EC-APG-15 NA

PARTS LIST

<p>GENERAL TOLERANCES (UNLESS OTHERWISE SPECIFIED)</p> <p>X. ±0.125</p> <p>.X ±0.094</p> <p>.XX ±0.063</p> <p>.XXX ±0.031</p> <p>ANGLES ±0.25°</p> <p>RADIUS ±0.031</p>		<p>Electro Composites solid HV bushings solution</p>	
<p>REMOVE BURRS AND BREAK SHARP EDGES</p> <p>DIMENSIONS ARE IN INCHES (UNLESS OTHERWISE SPECIFIED)</p>		<p>TITLE: SDC® BUSHING 25kV, 3000A MODEL: 150-030-T-1032-00</p>	
<p>DRAWN BY: M. FORGET</p> <p>CHECK BY:</p> <p>PROJECTING:</p> <p>PROJECT MANAGER:</p>	<p>DATE: 2018/07/10</p>	<p>SCALE: 1:8</p>	<p>GENERATED BY: SolidWorks 2013</p>
<p>PROJECT NO.:</p>		<p>FORMAT: A</p>	<p>CAGE CODE:</p>
<p>PROJECT NO.:</p>		<p>DRAWING NO.: S-1195-9752</p>	<p>REVISION: NR</p>
<p>PROJECT NO.:</p>		<p>SCALE: 1:8</p>	<p>SHEET: 1 of 1</p>

This drawing is the proprietary property of Electro Composites (2008) ULC, not part of the public domain, and is issued with the express understanding and agreement that it is not to be reproduced or copied in whole or in part or issued for furnishing information to others, or used directly or indirectly, in any way detrimental to the interest of Electro Composites (2008) ULC and is to be returned upon request by Electro Composites (2008) ULC. All Rights Reserved.