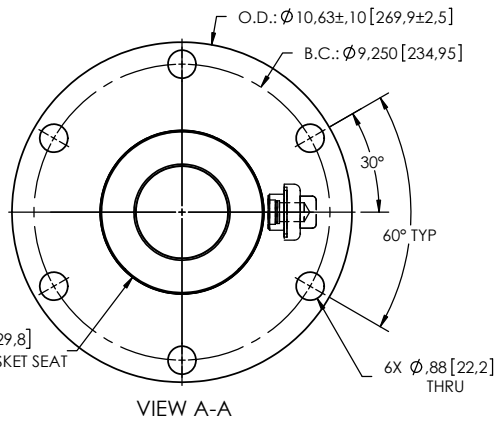
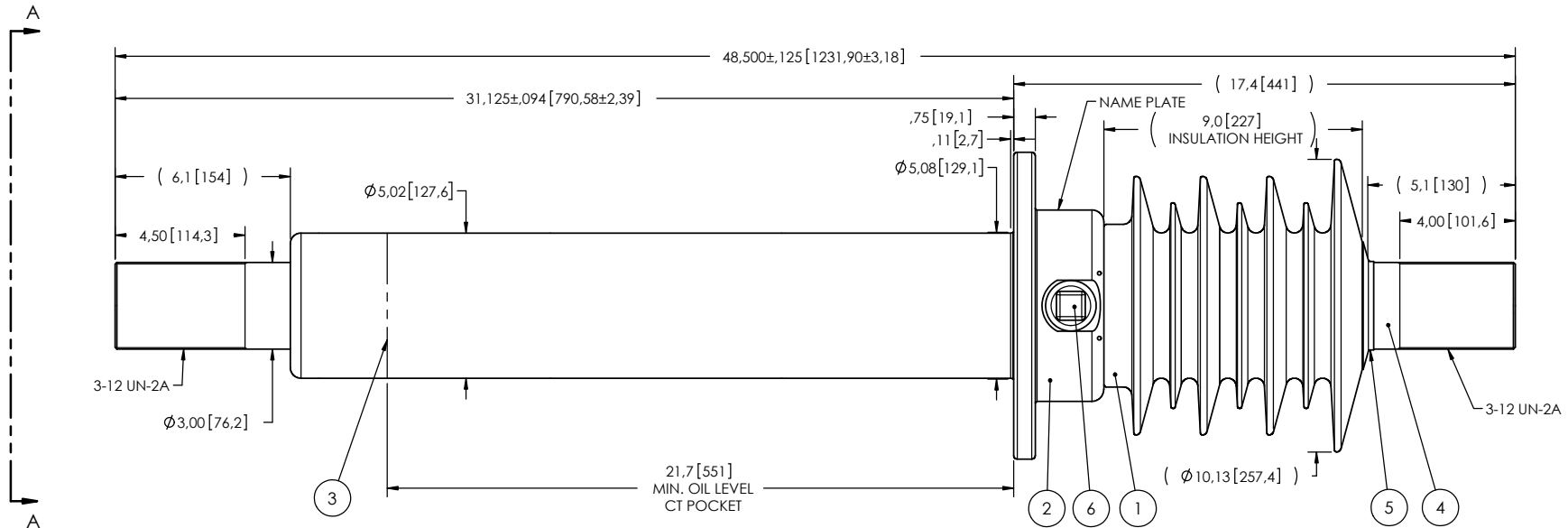


- NOTES:
- 1 CREEPAGE DISTANCE: 27.2" / 692mm
 - 2 ARC DISTANCE: 11.6" / 296mm
 - 3 NOMINAL VOLTAGE: 15kV
 - 4 NOMINAL CURRENT: 4000A
 - 5 VOLTAGE WITHSTAND, 60 sec.: 50kV
 - 6 BIL : 110kV
 - 7 ROUTINE TEST ACCORDING TO: CSA-C88.1-96
 - 8 MAX. TORQUE APPLIED ON FLANGE BOLTS: 70 lbf · ft / 94.9 N · m
 - 9 WEIGHT: 158 lb / 71.7 kg
 - 10 MAXIMUM OPERATING TEMPERATURE: 130°C

REVISIONS					
ZONE	REV.	DESCRIPTION	DRAWN BY	DATE	APPR.



ITEM NO.	QTY	DRAWING NO.	PART NO.	DESCRIPTION	NOTE / MAT'L
6	1	S-1001-2022		CAPACITANCE TAP ASSEMBLY	ALUMINUM
5	1	S-3529-2532-0		CAP	COPPER
4	1	S-5592-10226		ROD ASSEMBLY	COPPER
3	1	S-7412-7024		SHIELD ASSEMBLY	COPPER
2	1	S-5166-4676		FLANGE	ALUMINUM
1	1	S-5592-10225	-001	CASTING, CYCLOALIPHATIC RESIN	EC-APG-15NA

PARTS LIST					
GENERAL TOLERANCES (UNLESS OTHERWISE SPECIFIED) X. ±0.125 .X ±0.094 .XX ±0.063 .XXX ±0.031 ANGLES ±0.25° RADIUS ±0.031			Electro Composites™ solid HV bushings solution		
REMOVE BURRS AND BREAK SHARP EDGES DIMENSIONS ARE IN INCHES (UNLESS OTHERWISE SPECIFIED)			TITLE: SDC® BUSHING 15kV, 4000A MODEL: 110-040-T-1070-00		
DRAWN BY: M. FORGET	DATE: 2020/12/15	PROJECT NO.:	PROJECT MANAGER:	SCALE: 1:6	GENERATED BY: SolidWorks 2020
CHECK BY:	PROJECT ENG.:	PROJECT MANAGER:	DRAWING NO.: S-5592-10225	CAGE CODE:	REVISION: NR
				SHEET: 1 of 1	

This drawing is the proprietary property of Electro Composites (2008) ULC, not part of the public domain, and is issued with the express understanding and agreement that it is not to be reproduced or copied in whole or in part or issued for furnishing information to others, or used directly or indirectly, in any way detrimental to the interest of Electro Composites (2008) ULC and is to be returned upon request by Electro Composites (2008) ULC. All Rights Reserved.