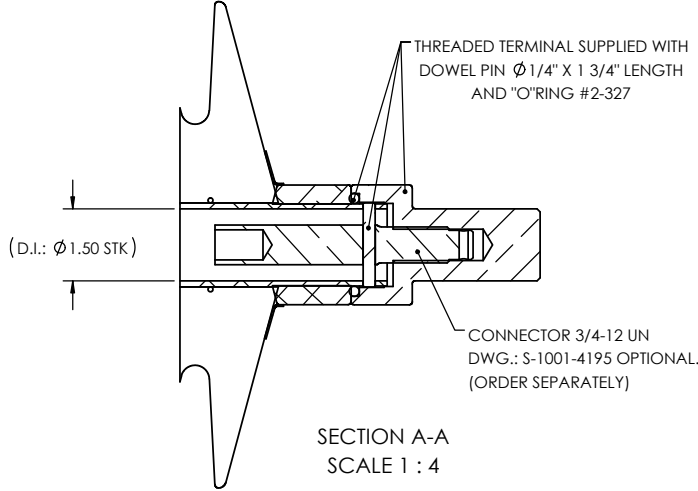
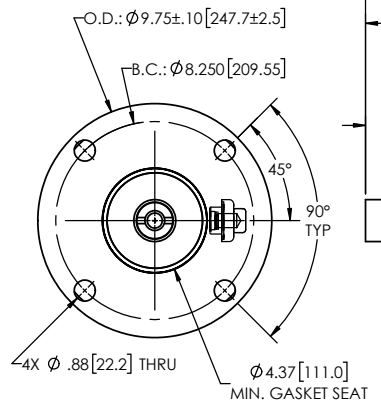
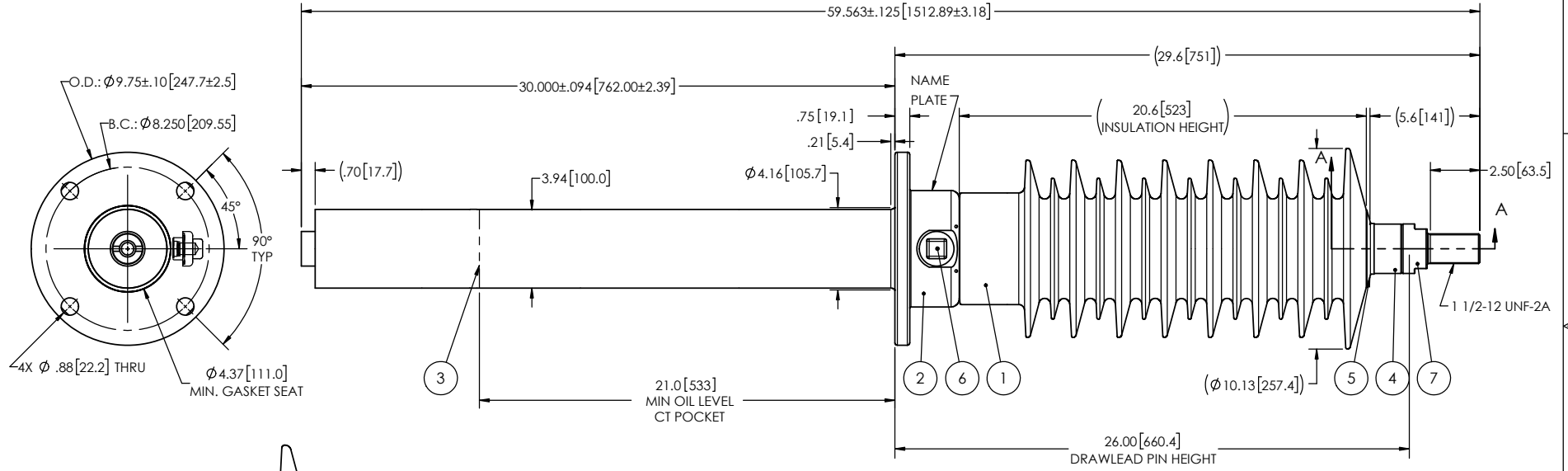


- NOTES:
- 1 CREEPAGE DISTANCE: 58.1" / 1476mm
 - 2 ARC DISTANCE: 23.4" / 594mm
 - 3 NOMINAL VOLTAGE: 46kV
 - 4 NOMINAL CURRENT: 700A
 - 5 VOLTAGE WITHSTAND, 60 sec.: 105kV
 - 6 BIL : 250kV
 - 7 ROUTINE TEST ACCORDING TO: IEEE C57.19.01
 - 8 MAX. TORQUE APPLIED ON FLANGE BOLTS: 40 lb·ft / 54.2 N·m
 - 9 WEIGHT: 77 lb / 34.9 kg

REVISIONS					
ZONE	REV.	DESCRIPTION	DRAWN BY	DATE	APPR.



ITEM NO.	QTY	DRAWING NO.	PART NO.	DESCRIPTION	NOTE / MAT'L
7	1	S-3936-10332-0		THREADED TERMINAL KIT	COPPER
6	1	S-1001-2022		CAPACITANCE TAP ASSEMBLY	ALUMINUM
5	1	S-3692-2417-1		CAP	ALUMINUM
4	1	S-6400-10392		TUBE ASSEMBLY	ALUMINUM
3	1	S-6400-10391		SHIELD ASSEMBLY	COPPER
2	1	S-5285-5014		FLANGE	ALUMINUM
1	1	S-6400-10387	-001	CASTING, CYCLOALIPHATIC RESIN	EC-APG-02

PARTS LIST					
GENERAL TOLERANCES (UNLESS OTHERWISE SPECIFIED)				ElectroComposites solid HV bushings solution	
X.	±0.125				
.X	±0.094			TITLE: SDC® BUSHING 46kV, 700A MODEL: 250-007-T-1097-00	
.XX	±0.063			FORMAT: A	CAGE CODE: S-6400-10387
.XXX	±0.031			DRAWING NO.:	REVISION: NR
ANGLES	±0.25°			SCALE: 1:8	GENERATED BY: SolidWorks 2021
RADIUS	±0.031			PROJECT MANAGER:	SHEET: 1 of 1
REMOVE BURRS AND BREAK SHARP EDGES					
DIMENSIONS ARE IN INCHES (UNLESS OTHERWISE SPECIFIED)					

This drawing is the proprietary property of Electro Composites (2008) ULC, not part of the public domain, and is issued with the express understanding and agreement that it is not to be reproduced or copied in whole or in part or issued for furnishing information to others, or used directly or indirectly, in any way detrimental to the interest of Electro Composites (2008) ULC and is to be returned upon request by Electro Composites (2008) ULC. All Rights Reserved.