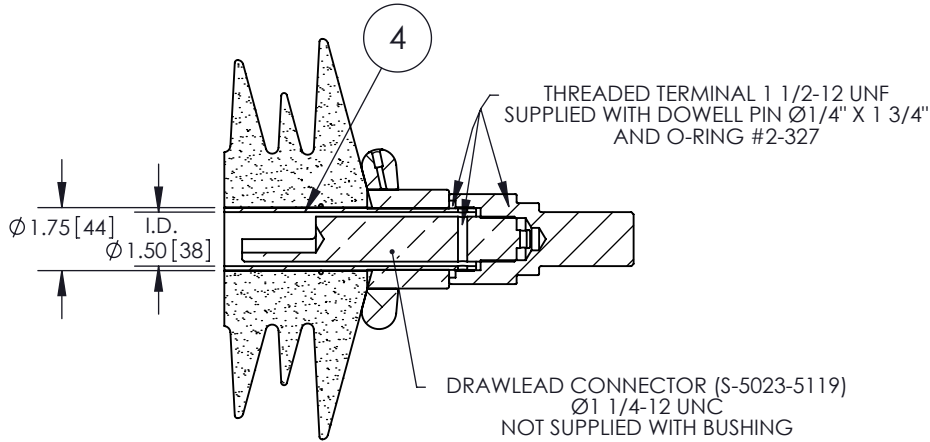
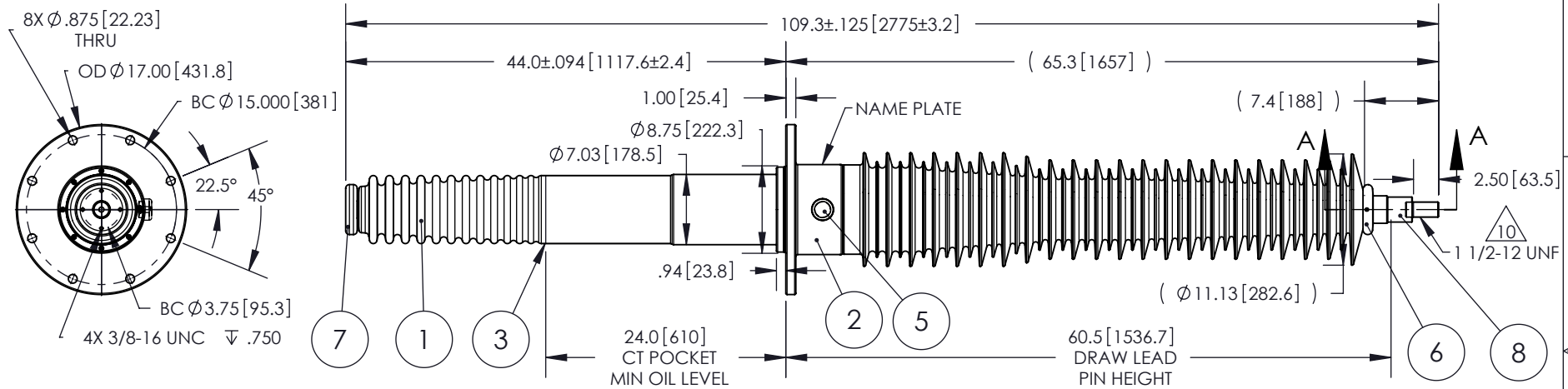


- NOTES:
- 1 CREEPAGE DISTANCE EXTERIOR: 164" / 4165 mm
  - INTERIOR: 26" / 660 mm
  - 2 ARC DISTANCE: 55" / 1407 mm
  - 3 NOMINAL VOLTAGE: 138kV
  - 4 NOMINAL CURRENT: 800A
  - 5 WITHSTAND VOLTAGE AT 60 sec.: 310kV
  - 6 B.I.L. : 650kV
  - 7 ROUTINE TEST ACCORDING TO: IEEE C57.19.01
  - 8 MAX. TORQUE APPLIED ON FLANGE BOLTS: 70 lbf x ft
  - 9 WEIGHT: 364 lbs / 165.1 Kg
  - 10 SILVER PLATED TOP END, AS PER ASTM B700, TYPE 1, GRADE D, CLASS N, NO NICKEL LAYER, FROM 13 TO 20 MICROMETERS THICKNESS

| REVISIONS |      |             |          |      |       |
|-----------|------|-------------|----------|------|-------|
| ZONE      | REV. | DESCRIPTION | DRAWN BY | DATE | APPR. |
|           |      |             |          |      |       |



SECTION A-A  
SCALE 3 : 16

| ITEM NO. | QTY | DRAWING NO.   | PART NO. | DESCRIPTION                   | NOTE / MAT'L |
|----------|-----|---------------|----------|-------------------------------|--------------|
| 8        | 1   | S-6397-5967-1 |          | THREADED TERMINAL KIT         | COPPER       |
| 7        | 1   | S-6397-5963   |          | CORONA RING BOTTOM            | ALUMINUM     |
| 6        | 1   | S-6397-5964   |          | CORONA RING TOP               | ALUMINUM     |
| 5        | 1   | S-2878-2606   |          | CAPACITANCE TAP ASSEMBLY      | ALUMINUM     |
| 4        | 1   | S-6397-5962   |          | TUBE ASSEMBLY                 | BRASS        |
| 3        | 1   | S-6397-5961   |          | SHIELD ASSEMBLY               | BRASS        |
| 2        | 1   | S-6397-5960   |          | FLANGE                        | ALUMINUM     |
| 1        | 1   | S-6397-5959   | -001     | CASTING, CYCLOALIPHATIC RESIN | EC-APG-02    |

| PARTS LIST                                      |        |   |          |  |                 |
|---|--------|---|----------|--|-----------------|
| GENERAL TOLERANCES (UNLESS OTHERWISE SPECIFIED) |        | <b>Electro Composites™</b><br><b>solid HV bushings solution</b> |          | TITLE: BUSHING 138kV, 800A MODEL: 650-008-T-114-06 |                 |
| X.  | ±0.125 | DRAWN BY:   | A.SAVARD | DATE:  | 2010/07/01      |
| .X  | ±0.094 | CHECK BY:   |          | FORMAT:  | A               |
| .XX   | ±0.063 | PROJECT ENG.:   |          | CAGE CODE:   |                 |
| .XXX  | ±0.031 | PROJECT MGR.:   |          | DRAWING NO.:                                       | S-6397-5959     |
| ANGLES  | ±0.1°  |   |          | REVISION:  | NR              |
| RADIUS  | ±0.031 |   |          | SCALE:   | 1:16            |
| REMOVE BURRS AND BREAK SHARP EDGES              |        | DIMENSIONS ARE IN INCHES (UNLESS OTHERWISE SPECIFIED)           |          | GENERATED BY:                                      | SolidWorks 2009 |
|   |        |   |          | SHEET:   | 1 of 1          |

This drawing is the proprietary property of Electro Composites (2008) ULC, not part of the public domain, and is issued with the express understanding and agreement that it is not to be reproduced or copied in whole or in part or issued for furnishing information to others, or used directly or indirectly, in any way detrimental to the interest of Electro Composites (2008) ULC and is to be returned upon request by Electro Composites (2008) ULC. All Rights Reserved.