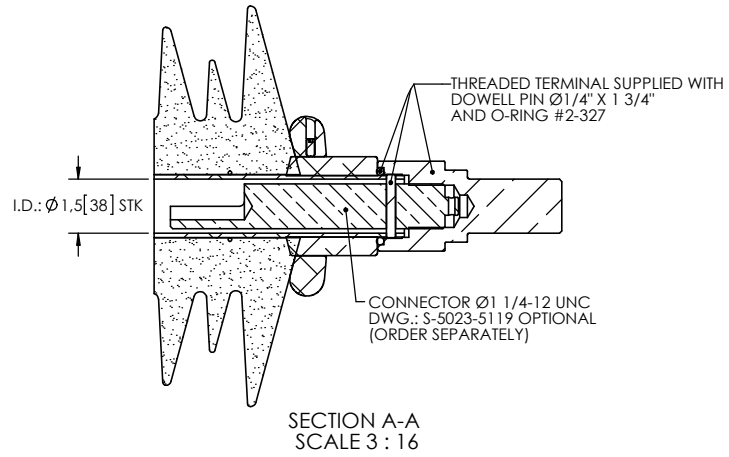
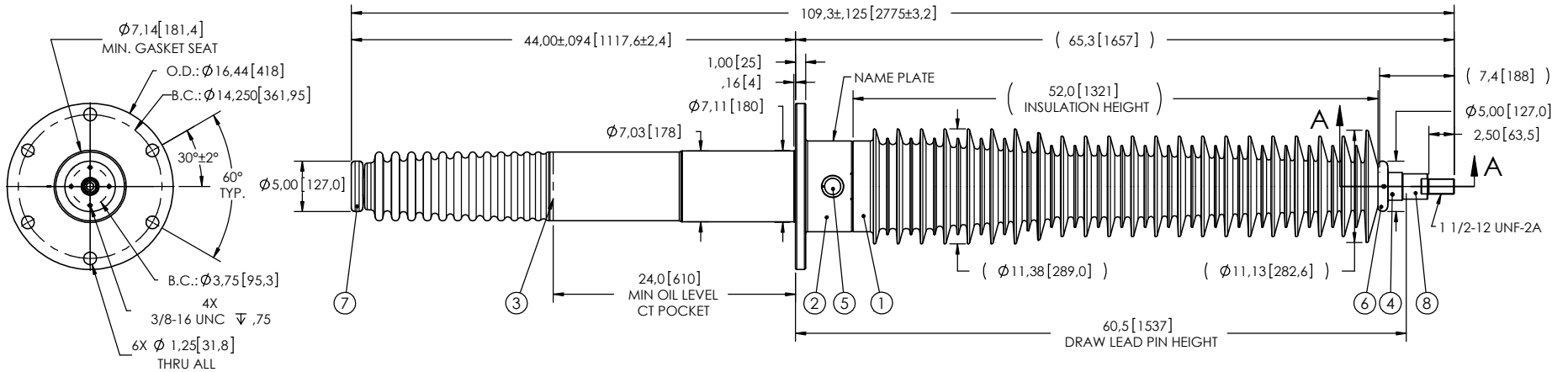


NOTES:

- 1 CREEPAGE DISTANCE EXTERIOR: 164" / 4165 mm
- INTERIOR: 26" / 660 mm
- 2 ARC DISTANCE: 55" / 1407 mm
- 3 NOMINAL VOLTAGE: 145kV
- 4 NOMINAL CURRENT: 800A
- 5 VOLTAGE WITHSTAND, 60 sec. : 335kV
- 6 BIL : 650kV
- 7 ROUTINE TEST ACCORDING TO: CSA C88.1-96
- 8 MAX. TORQUE APPLIED ON FLANGE BOLTS: 70 lbf · ft / 94.9 N · m
- 9 WEIGHT: 314 lb / 141.1 Kg

REVISIONS					
ZONE	REV.	DESCRIPTION	DRAWN BY	DATE	APPR.



ITEM NO.	QTY	DRAWING NO.	PART NO.	DESCRIPTION	NOTE / MAT'L
8	1	S-6397-5967-0		THREADED TERMINAL KIT	COPPER
7	1	S-6397-5963		CORONA RING BOTTOM	ALUMINUM
6	1	S-6397-5964		CORONA RING TOP	ALUMINUM
5	1	S-2878-2606		CAPACITANCE TAP ASSEMBLY	ALUMINUM
4	1	S-6397-5962		TUBE ASSEMBLY	ALUMINUM
3	1	S-6397-5961		SHIELD ASSEMBLY	BRASS
2	1	S-6789-6870		FLANGE	ALUMINUM
1	1	S-1075-8326	-001	CASTING, CYCLOALIPHATIC RESIN	EC-APG-02

PARTS LIST					
GENERAL TOLERANCES (UNLESS OTHERWISE SPECIFIED) X. ±0.125 .X ±0.094 .XX ±0.063 .XXX ±0.031 ANGLES ±0.25° RADIUS ±0.031			Electro Composites™ solid HV bushings solution		TITLE: SDC® BUSHING 145kV, 800A MODEL: 650-008-T-114-18
REMOVE BURRS AND BREAK SHARP EDGES DIMENSIONS ARE IN INCHES (UNLESS OTHERWISE SPECIFIED)		DRAWN BY: A.SAVARD DATE: 2014/05/05	PROJECTING:	PROJECT MANAGER:	
PROJECT NO.:			FORMAT: A	CAGE CODE:	DRAWING NO.: S-8441-8326
REVISION:			REVISION: NR	SHEET: 1 of 1	

This drawing is the proprietary property of Electro Composites (2008) ULC, not part of the public domain, and is issued with the express understanding and agreement that it is not to be reproduced or copied in whole or in part or issued for furnishing information to others, or used directly or indirectly, in any way detrimental to the interest of Electro Composites (2008) ULC and is to be returned upon request by Electro Composites (2008) ULC. All Rights Reserved.