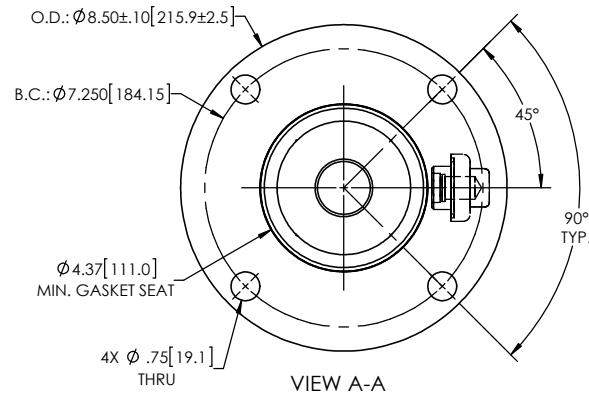
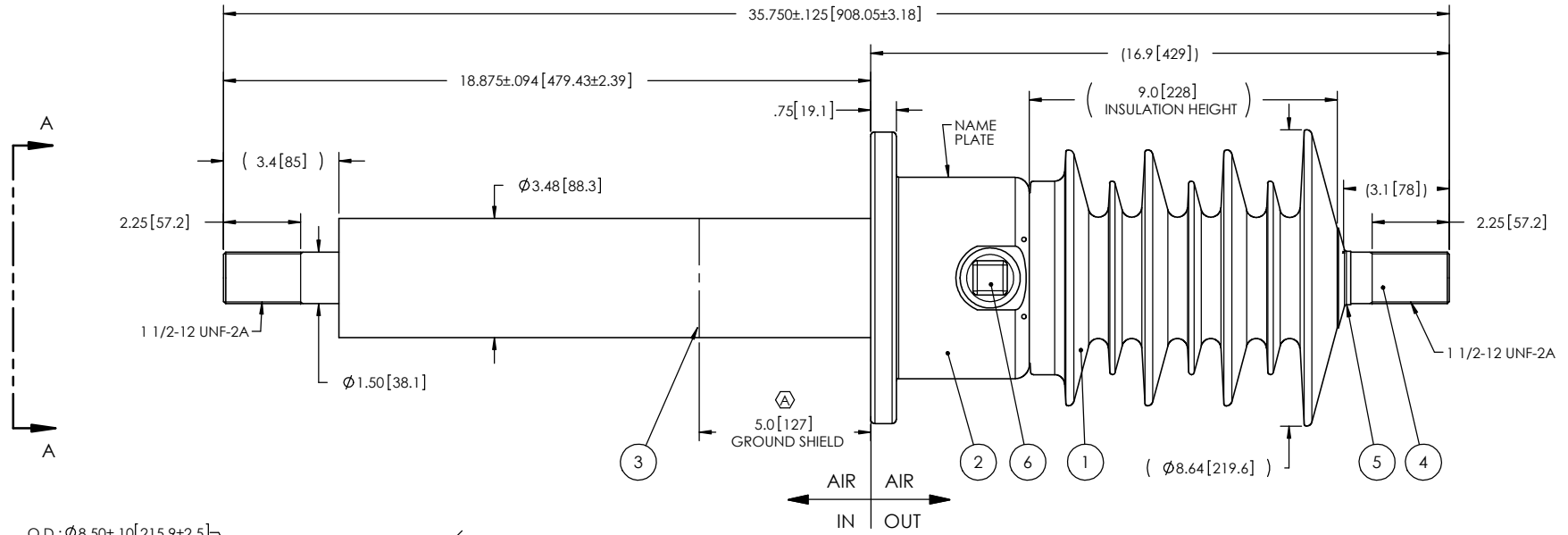


NOTES:

1 CREEPAGE DISTANCE:	OUTSIDE: 26.9" / 683mm	INSIDE: 11.5" / 292mm
2 ARC DISTANCE:	OUTSIDE: 13.2" / 335mm	INSIDE: 11.5" / 292mm
3 NOMINAL VOLTAGE:	27.5kV	
4 NOMINAL CURRENT:	1200A	
5 VOLTAGE WITHSTAND, 60 sec.:	70kV	
6 BIL :	150kV	
7 ROUTINE TEST ACCORDING TO:	CSA C88.1-96	
8 MAX. TORQUE APPLIED ON FLANGE BOLTS:	40 lbf · ft / 54.2 N · m	
9 WEIGHT:	51 lb / 23.18 Kg	

REVISIONS					
ZONE	REV.	DESCRIPTION	DRAWN BY	DATE	APPR.
C4	A	"MIN. OIL LEVEL" BECOMES "GROUND SHIELD"	J. CLICHE	2017-06-27	Y.V.



This drawing is the proprietary property of Electro Composites (2008) ULC, not part of the public domain, and is issued with the express understanding and agreement that it is not to be reproduced or copied in whole or in part or issued for furnishing information to others, or used directly or indirectly, in any way detrimental to the interest of Electro Composites (2008) ULC and is to be returned upon request by Electro Composites (2008) ULC. All Rights Reserved.

ITEM NO.	QTY	DRAWING NO.	PART NO.	DESCRIPTION	NOTE / MAT'L
6	1	S-1001-2022		CAPACITANCE TAP ASSEMBLY	ALUMINUM
5	1	S-1001-0007		CAP	COPPER
4	1	S-5896-5517		ROD ASSEMBLY	COPPER
3	1	S-1646-9131		SHIELD ASSEMBLY	COPPER
2	1	S-5896-5515		FLANGE	ALUMINUM
1	1	S-1646-9130	-001	CASTING, CYCLOALIPHATIC RESIN	EC-APG-02

PARTS LIST					
GENERAL TOLERANCES (UNLESS OTHERWISE SPECIFIED)			<p align="center">Electro Composites solid HV bushings solution</p> <p>TITLE: SDC® BUSHING 27.5kV, 1200A MODEL: 150-012-W-118-02</p>		
X.	±0.125				
.X	±0.094			DRAWN BY: J.N.PILOTTE	DATE: 2016/07/11
.XX	±0.063			CHECK BY:	
.XXX	±0.031			PROJECT NO.:	
ANGLES	±0.25°			PROJECT MANAGER:	
RADIUS	±0.031			SCALE: 1:5	GENERATED BY: SolidWorks 2013
REMOVE BURRS AND BREAK SHARP EDGES			SHEET: 1 of 1		
DIMENSIONS ARE IN INCHES (UNLESS OTHERWISE SPECIFIED)			DRAWING NO.: S-1646-9130		