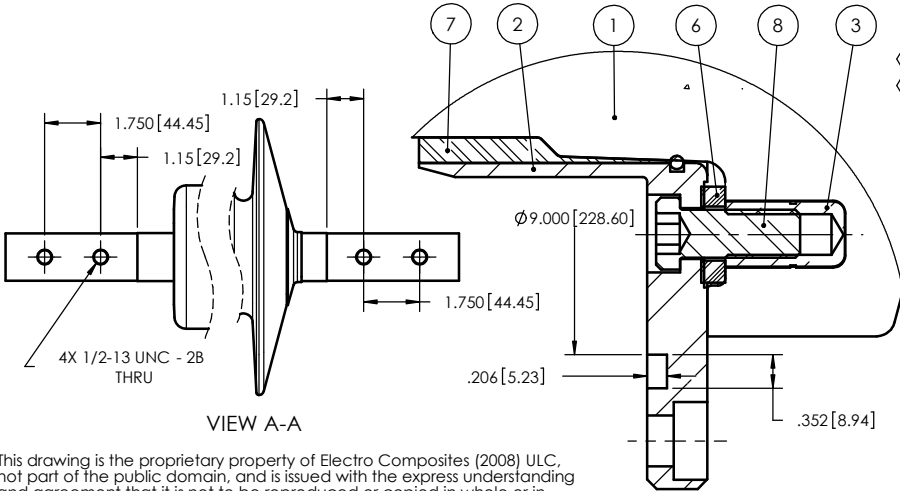
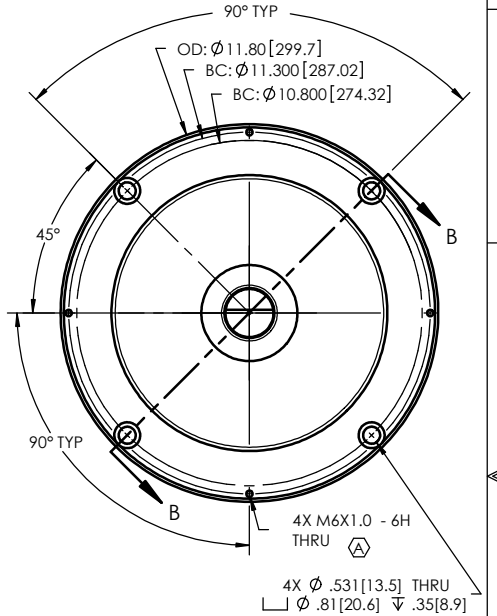
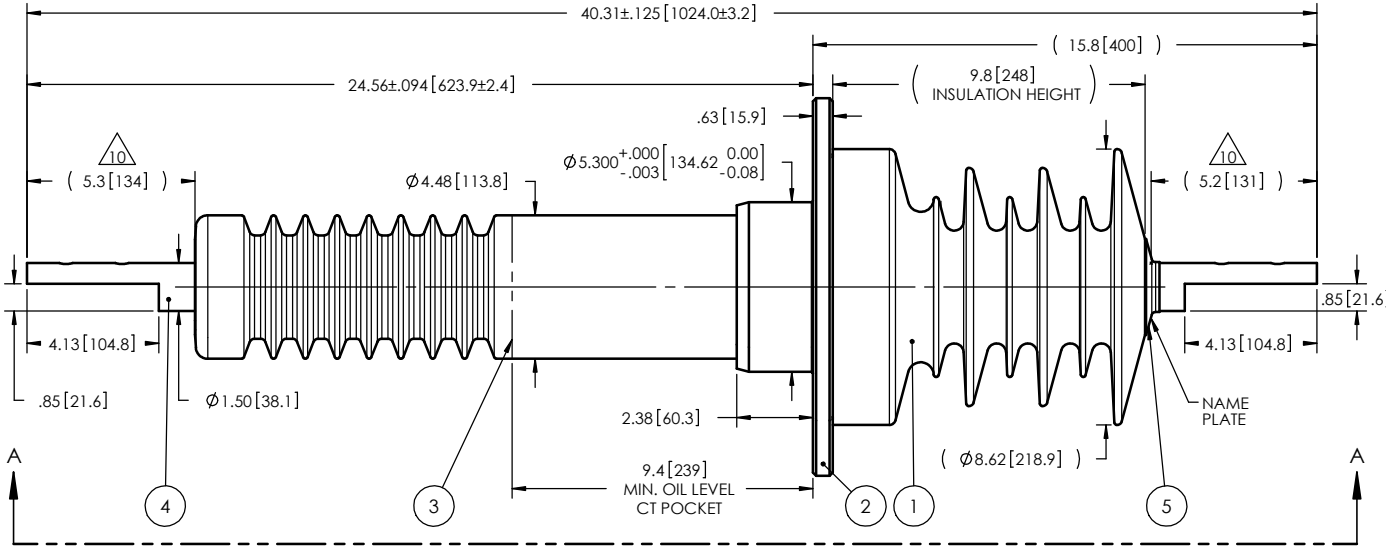


NOTES:

- 1 CREEPAGE DISTANCE: OUTSIDE: 26.0" / 660mm INSIDE: 24.5" / 622mm
  - 2 ARC DISTANCE: OUTSIDE: 11.9" / 302mm INSIDE: 18.3" / 465mm
  - 3 NOMINAL VOLTAGE: 38kV
  - 4 NOMINAL CURRENT: 600A
  - 5 VOLTAGE WITHSTAND, 60 sec.: 70kV
  - 6 BIL : 200kV
  - 7 ROUTINE TEST ACCORDING TO: IEC 137
  - 8 MAX. TORQUE APPLIED ON FLANGE BOLTS: 40 lbf·ft / 54.2 N·m
  - 9 WEIGHT: 71 lb / 32.2 Kg
- ⚠ MATTE TIN ALL SURFACES AS PER MIL-T-10727, TYPE 1, PLATING THICKNESS .0003" (7.6 MICROMETERS) MINIMUM

REVISIONS

ZONE	REV.	DESCRIPTION	DRAWN BY	DATE	APPR.
C1 C4	A	ADD 4 HOLES M6x1.0-6H ON THE FLANGE THE NAME OF THE ADHESIVE CHANGE FROM EL-336 TO EC-144 THE 1/2-13 X 1 1/4" SCREW MATERIAL CHANGE TO STAINLESS STEEL	J. CLICHE	2014/03/20	Y.V.



ITEM NO.	QTY	DRAWING NO.	PART NO.	DESCRIPTION	NOTE / MATL
8	4	S-7318-8287		SOCKET LOW HEAD CAP SCREW 1/2-13 X 1 1/4" LONG	STAINLESS STEEL 316
7	1		EC-144	ADHESIVE	EPOXY
6	1	S-7318-6976		GASKET	VITON
5	1	S-1001-0007		CAP	COPPER
4	1	S-7318-6975		ROD ASSEMBLY	COPPER
3	1	S-1001-0013		SHIELD ASSEMBLY	COPPER
2	1	S-7318-6974		FLANGE	STAINLESS STEEL 316
1	1	S-7318-6973	-001	CASTING, CYCLOALIPHATIC RESIN	EC-APG-02

GENERAL TOLERANCES (UNLESS OTHERWISE SPECIFIED)

X. ±0.125  
 .X ±0.094  
 .XX ±0.063  
 .XXX ±0.031  
 ANGLES ±3.0°  
 RADIUS ±0.031

REMOVE BURRS AND BREAK SHARP EDGES

DIMENSIONS ARE IN INCHES (UNLESS OTHERWISE SPECIFIED)

**ElectroComposites™**  
**solid HV bushings solution**

TITLE: SDC® BUSHING 38kV, 600A  
 MODEL: 200-006-T-127-01

DRAWN BY: J. CLICHE DATE: 2011/12/22

CHECK BY: PROJECTING: PROJECT MANAGER:

FORMAT: A CAGE CODE: DRAWING NO.: S-7318-6973 REVISION: A

SCALE: 1:6 GENERATED BY: SolidWorks 2013 SHEET: 1 of 1

This drawing is the proprietary property of Electro Composites (2008) ULC, not part of the public domain, and is issued with the express understanding and agreement that it is not to be reproduced or copied in whole or in part or issued for furnishing information to others, or used directly or indirectly, in any way detrimental to the interest of Electro Composites (2008) ULC and is to be returned upon request by Electro Composites (2008) ULC. All Rights Reserved.

SECTION B-B  
 SCALE 1 : 2